



ASUS K50IJ Screen replacement 15.6"

Replacement

This is a replacement guide for the ASUS K50IJ screen. The ASUS K50IJ has a 15.6" Liquid Crystal Display (LCD) screen.

Written By: Dmitriy Ivakhnenko



This document was generated on 2020-11-14 06:37:11 PM (MST).

INTRODUCTION

Sometimes screens stop working. This guide will show you how to replace your screen and get back to browsing.



TOOLS:

- [Phillips #1 Screwdriver](#) (1)
-

Step 1 — Battery



- Slide the tab over to unlock the battery cover located on the bottom-left corner of the laptop.

Step 2



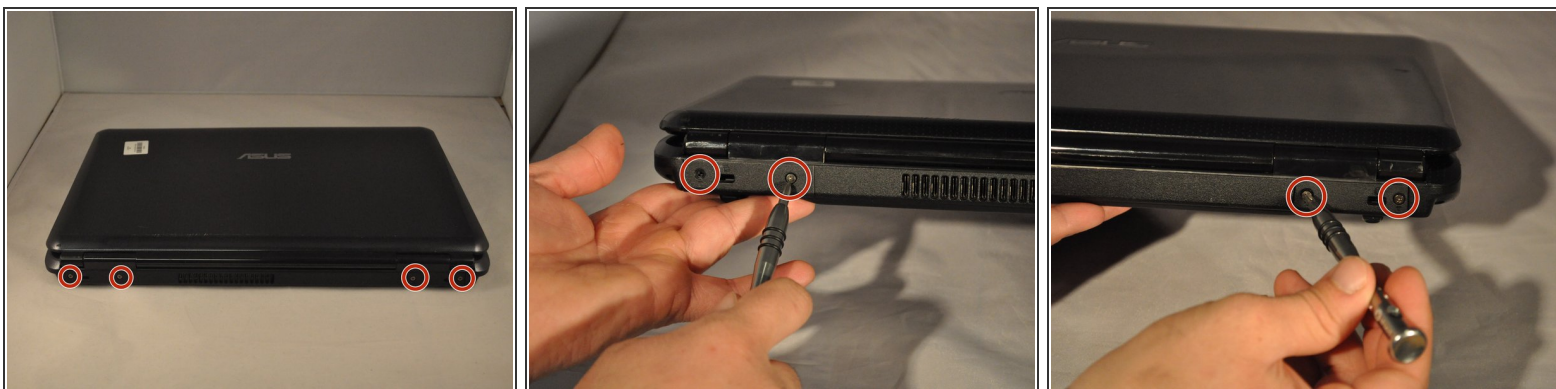
- Lift the exposed lip and remove the battery cover.

Step 3



- Press the tabs on the battery and lift them. The battery should come out easily.

Step 4 — Fan



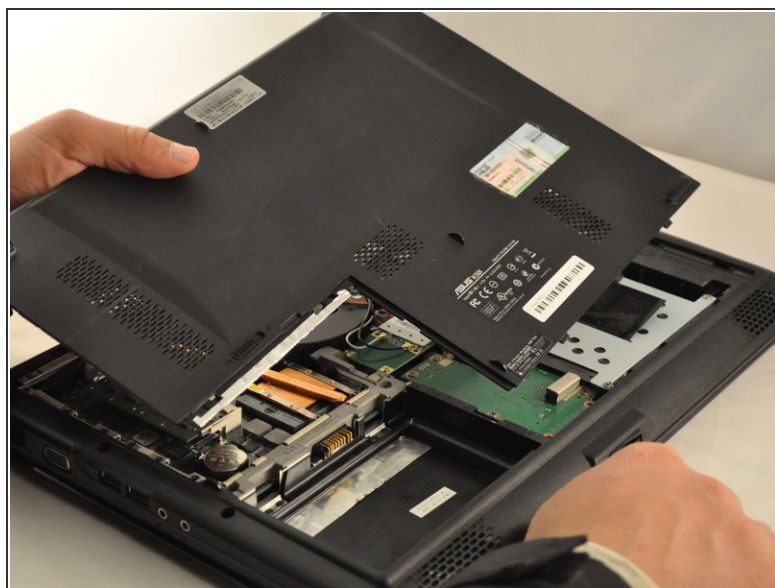
- Using the PH1 screwdriver, remove the four 4 .75 mm screws that are located on the vent panel.

Step 5



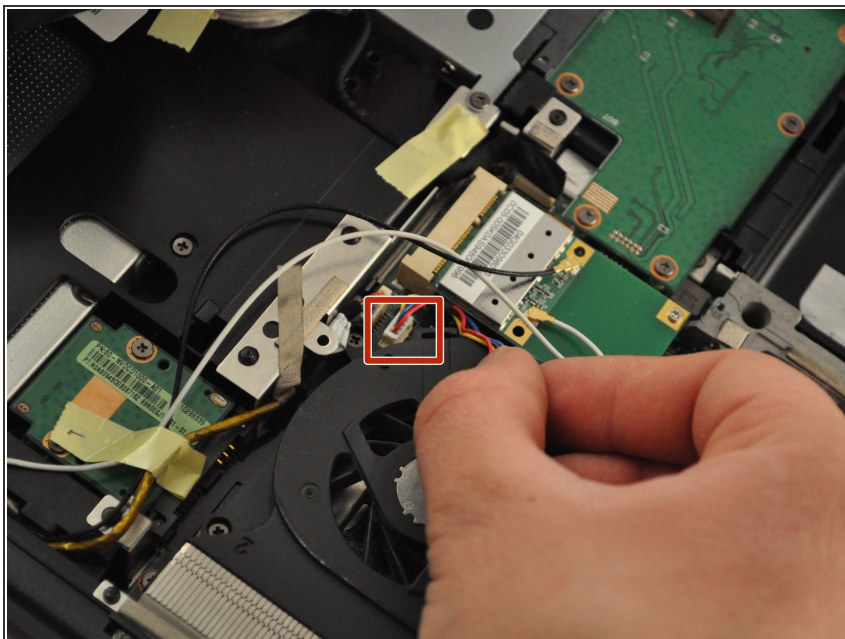
- Remove the one .5 mm screw located in the top right corner of the battery compartment.

Step 6



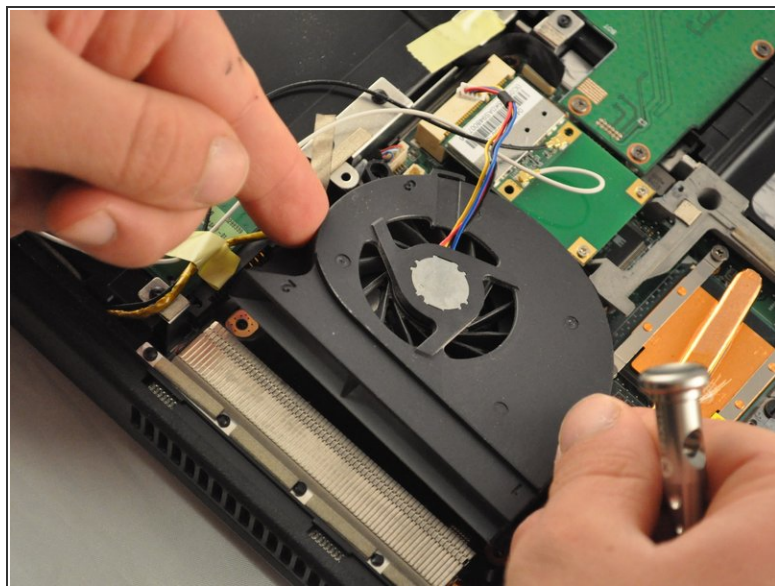
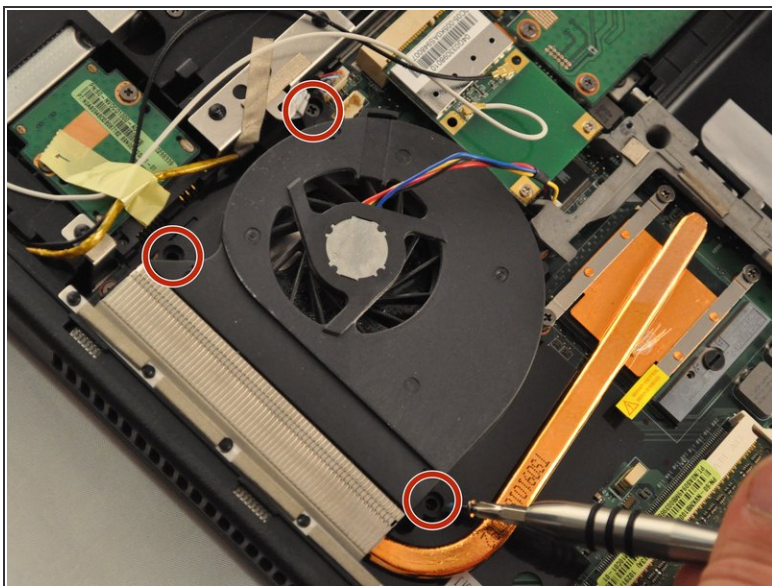
- Remove the bottom panel by sliding it toward the hinges and lifting the back panel up.

Step 7



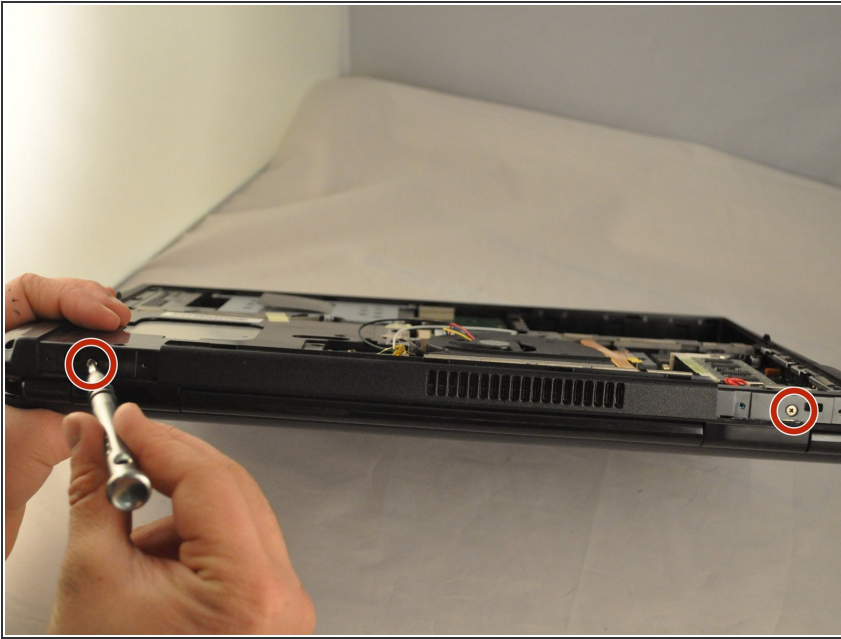
- Unplug the wire cable attached to the fan by pulling it out .

Step 8



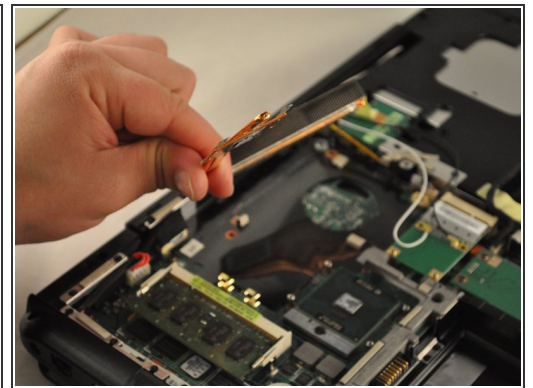
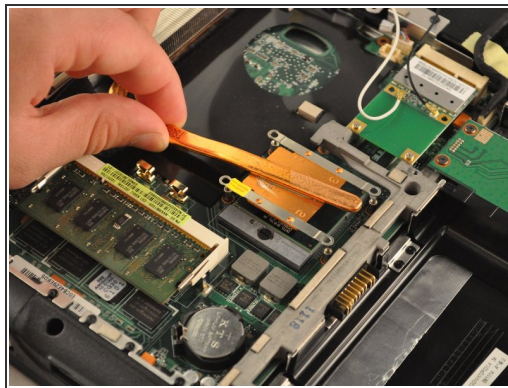
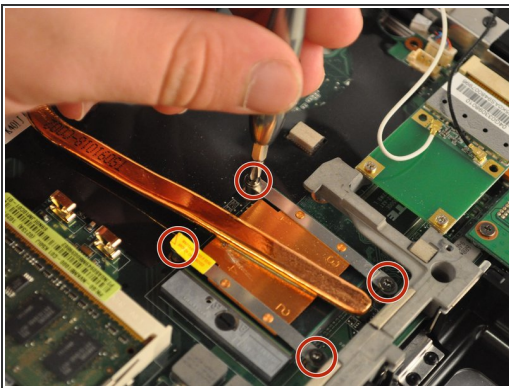
- Using the PH1 screwdriver, remove the 3 .75mm screws labeled as 1, 2, and 3 on the fan. **NOTE** these screws have the labels "1", "2", and "3" next to them.
- Lift the fan up with your fingers.

Step 9 — Charging Port



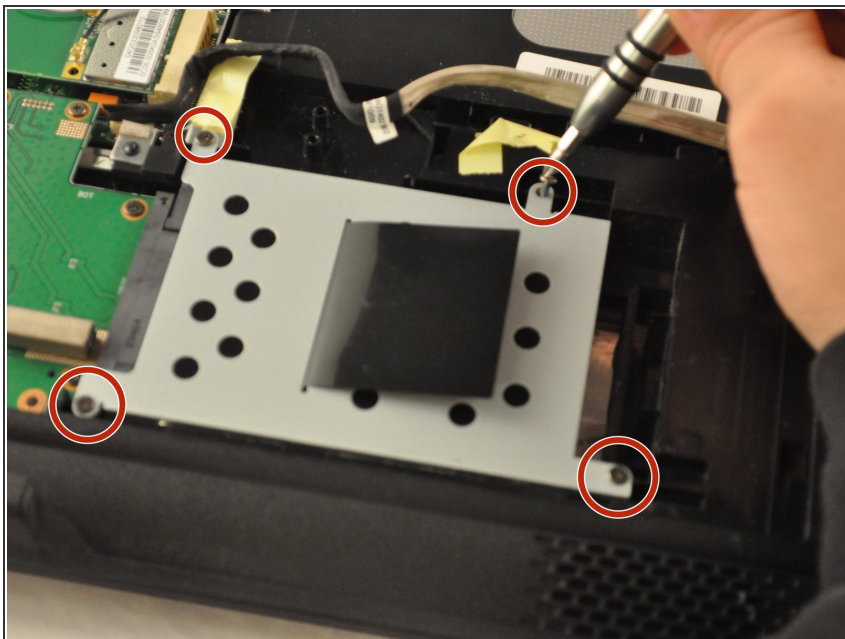
- Using the PH1 screwdriver remove the two .75 mm screws from the hinge side of the laptop.

Step 10



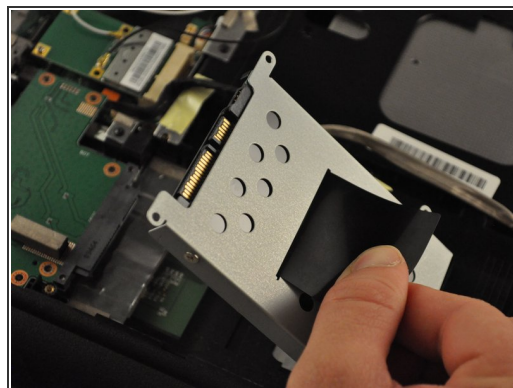
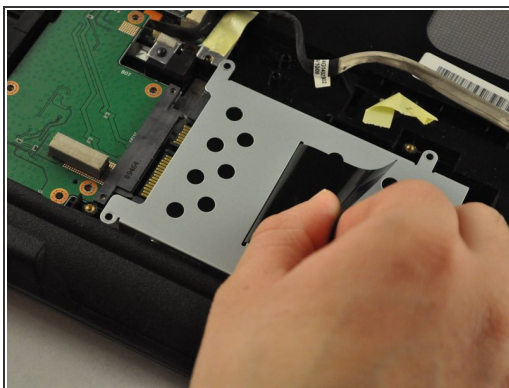
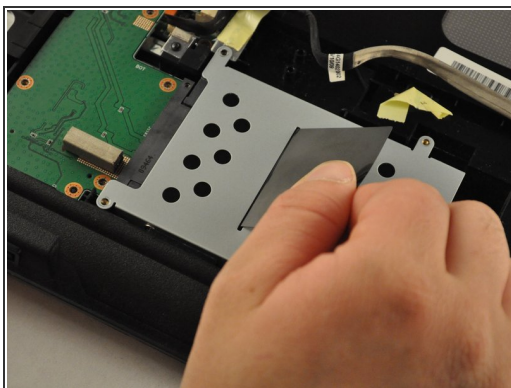
- Using the PH1 screwdriver, remove the four .75 mm screws from the copper heat sync. They will be labeled 1-4.
- Pull the copper heat sync out of the laptop.

Step 11



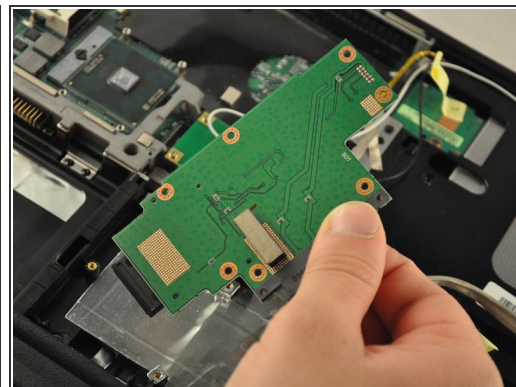
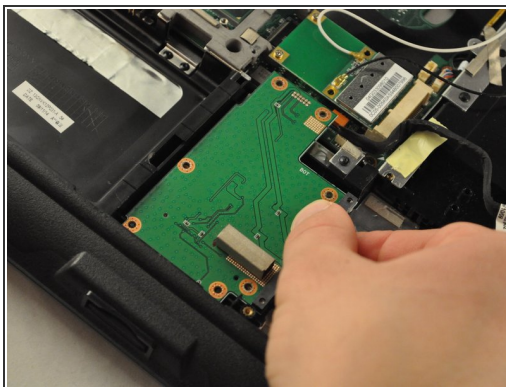
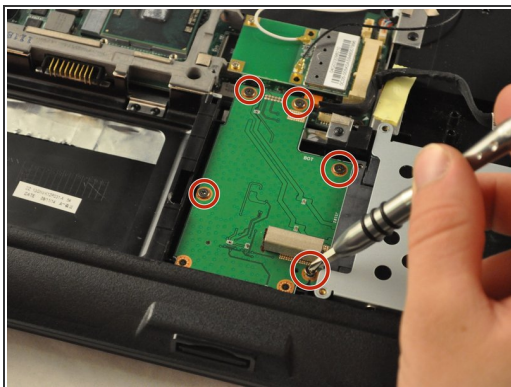
- Using the PH1 screwdriver, remove four .75 mm screws from the driver, located in the bottom-right corner of the laptop.

Step 12



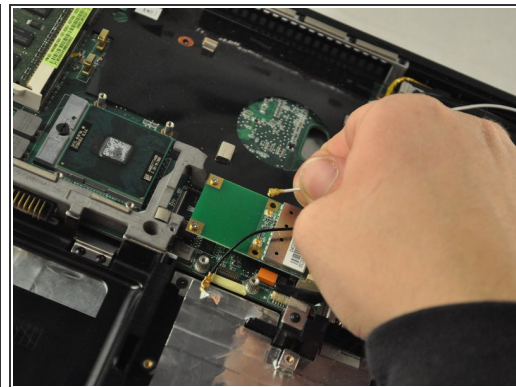
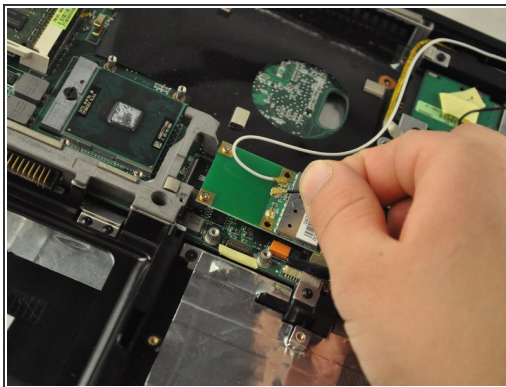
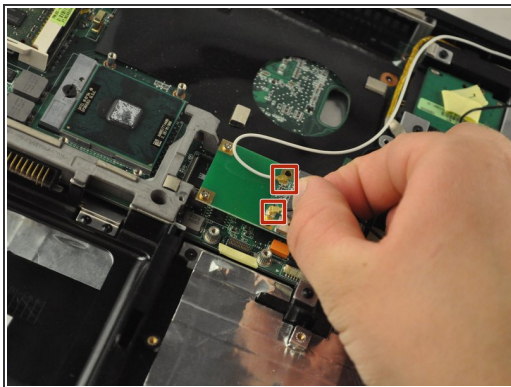
- Pull on the black tab on the driver to slide the driver back, and lift the driver out of the laptop.

Step 13



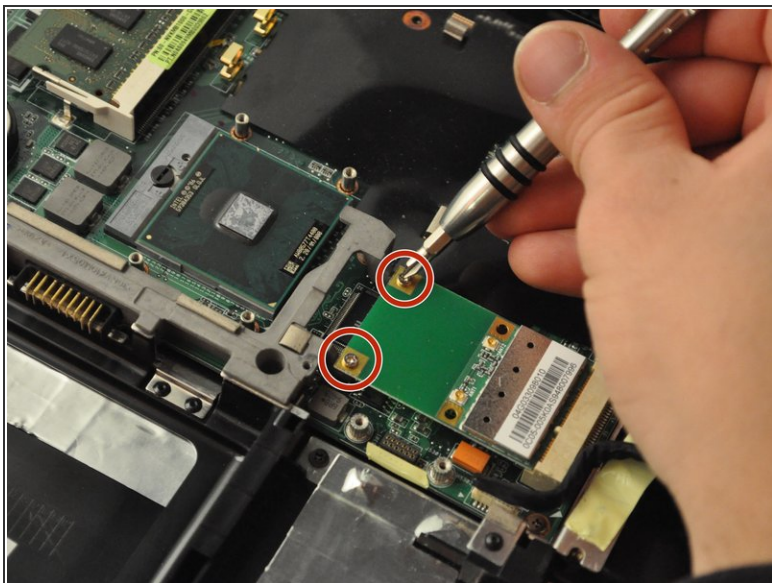
- Using the PH1 screwdriver, remove the five .5 mm screws from the SD card reader, located in the bottom-middle corner of the laptop.
- Slide the SD card reader away and out.

Step 14



- Detach the white and black wires from the Wi-Fi card, located in the central area of the laptop.

Step 15



- Using the PH 1 screwdriver, remove the two .25 mm screws from the Wi-Fi card.

Step 16



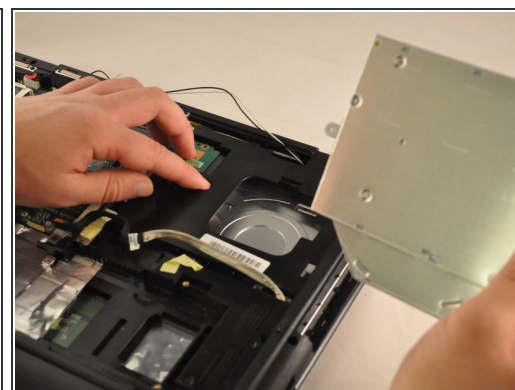
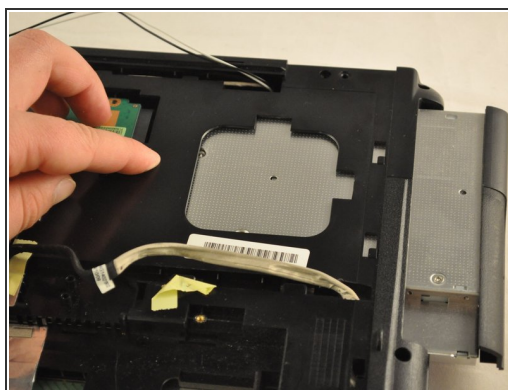
- Slide the Wi-Fi card out of its slot to remove.

Step 17



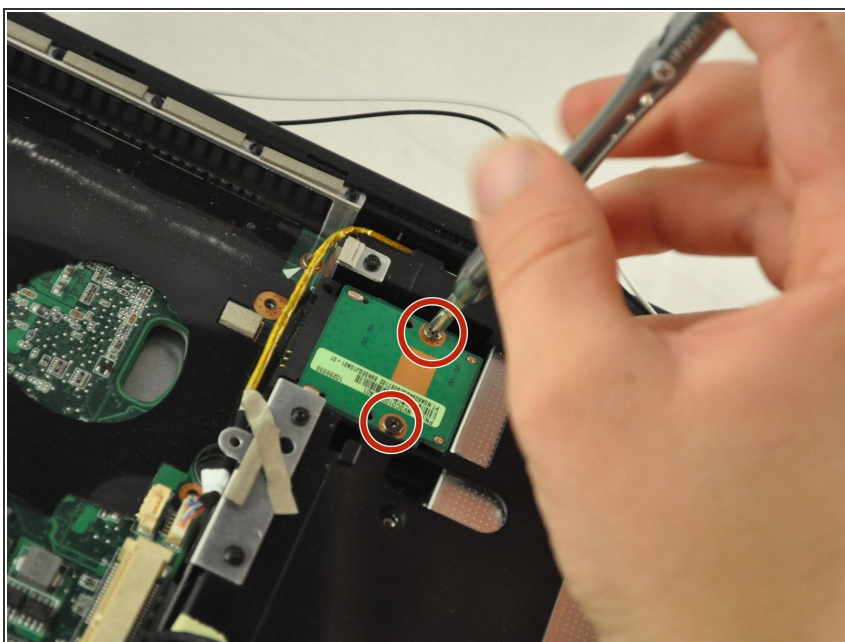
- Using the PH1mm screwdriver, remove one .5 mm screw from the disk drive, located in the top-right corner of the laptop.

Step 18



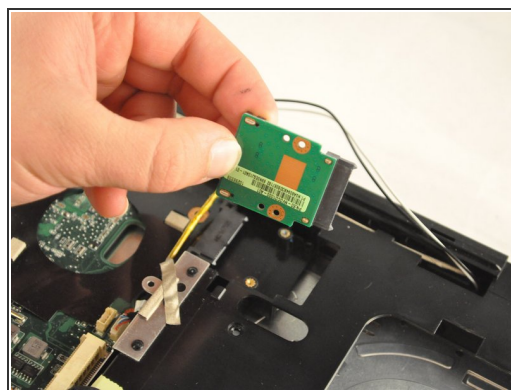
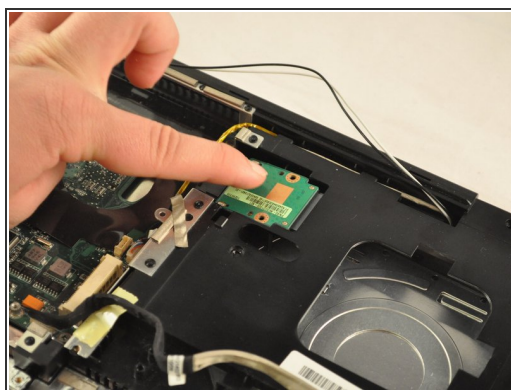
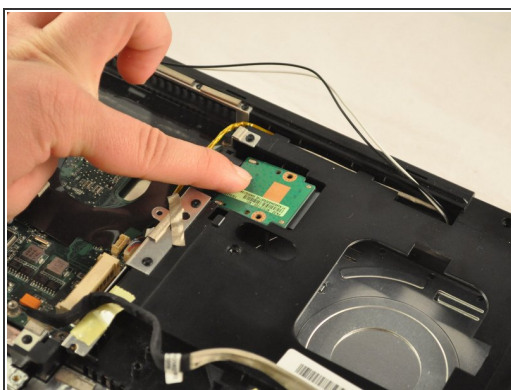
- Slide the disc drive out of its slot.

Step 19



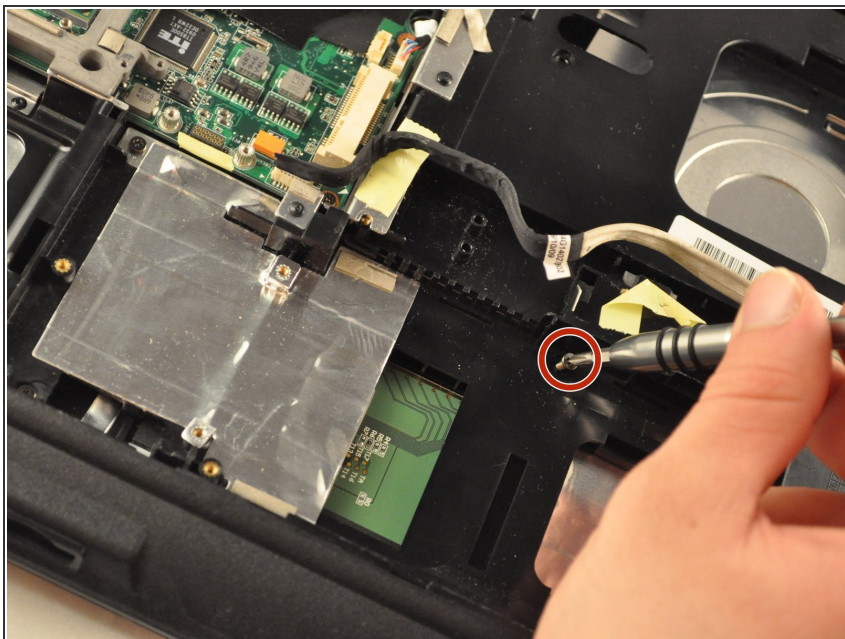
- Using the PH 1 screwdriver, remove the two .5 mm screws from the RAM drive.

Step 20



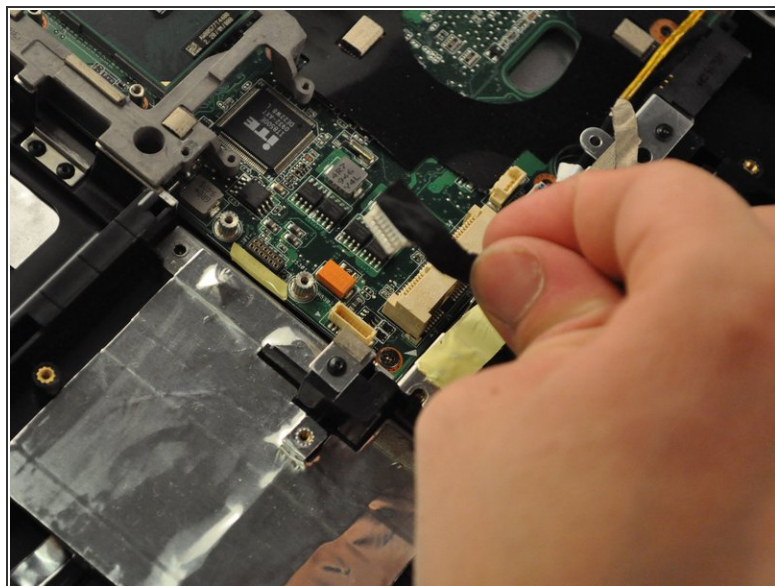
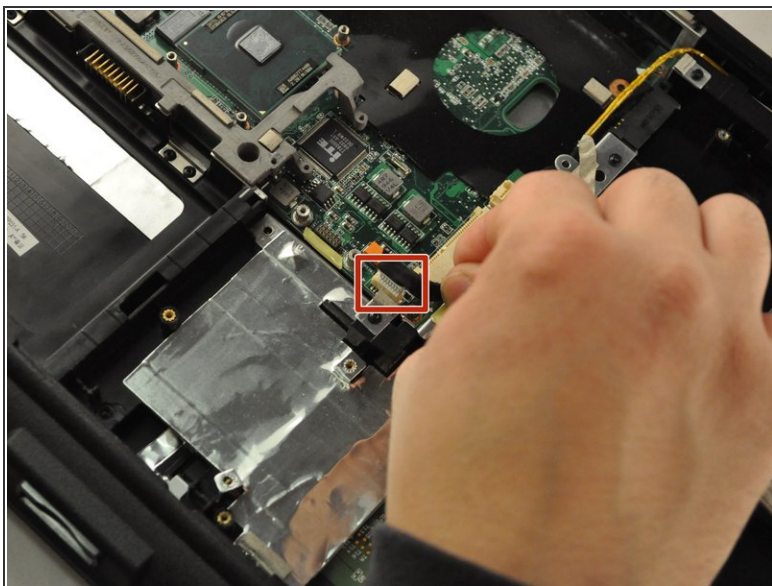
- Slide and lift the RAMdrive out of its port.

Step 21



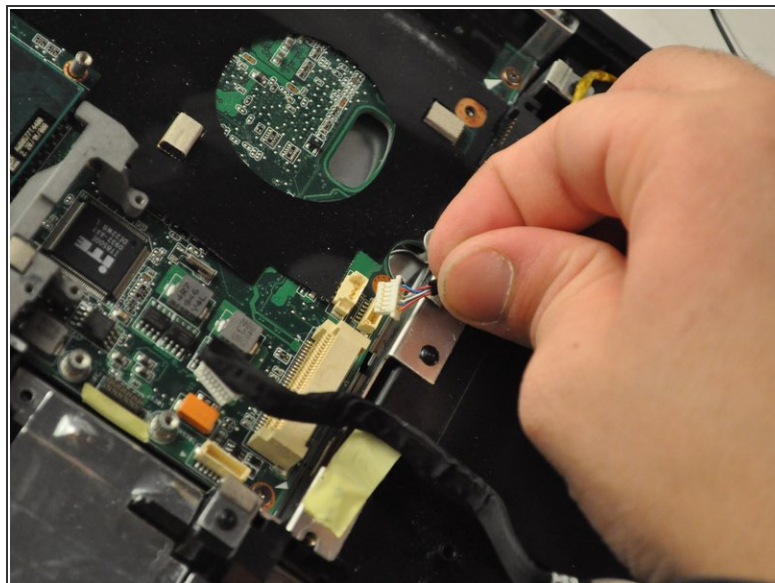
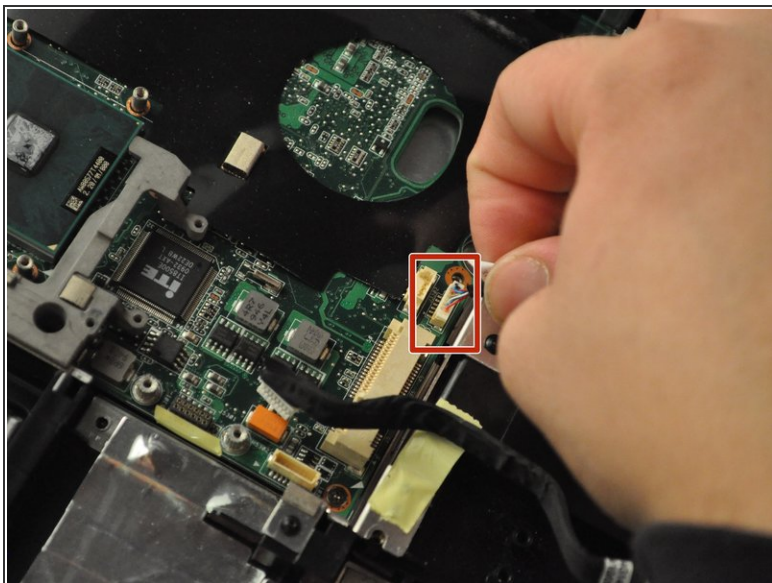
- Using the PH1 screwdriver, remove the .75 mm screw from the plastic housing corner, located in the bottom-right corner of the laptop.

Step 22



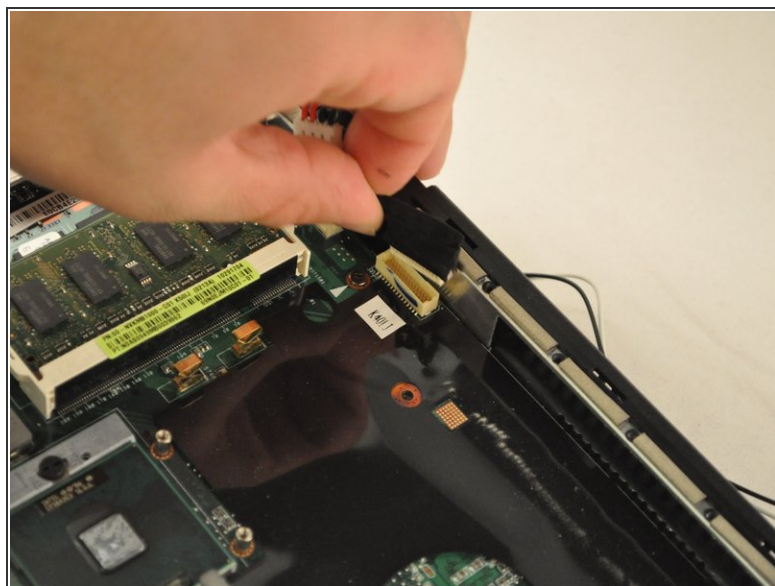
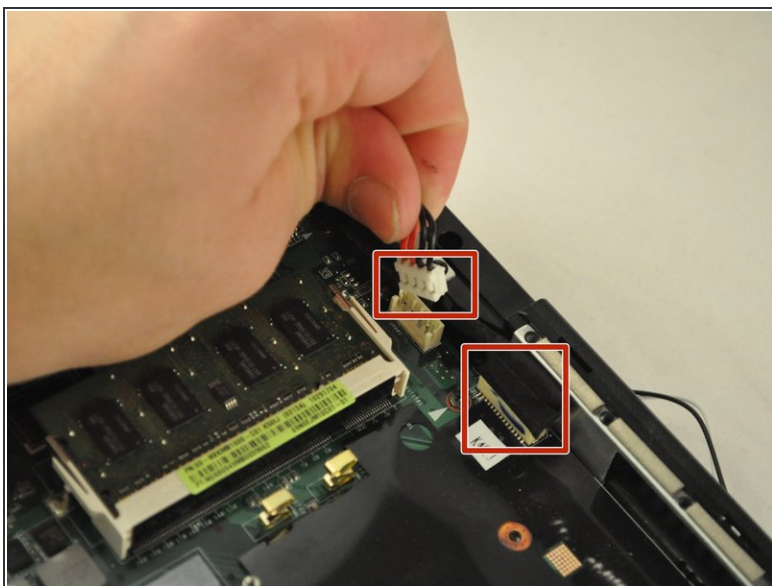
- Unplug the black cable from the central area of the laptop.

Step 23



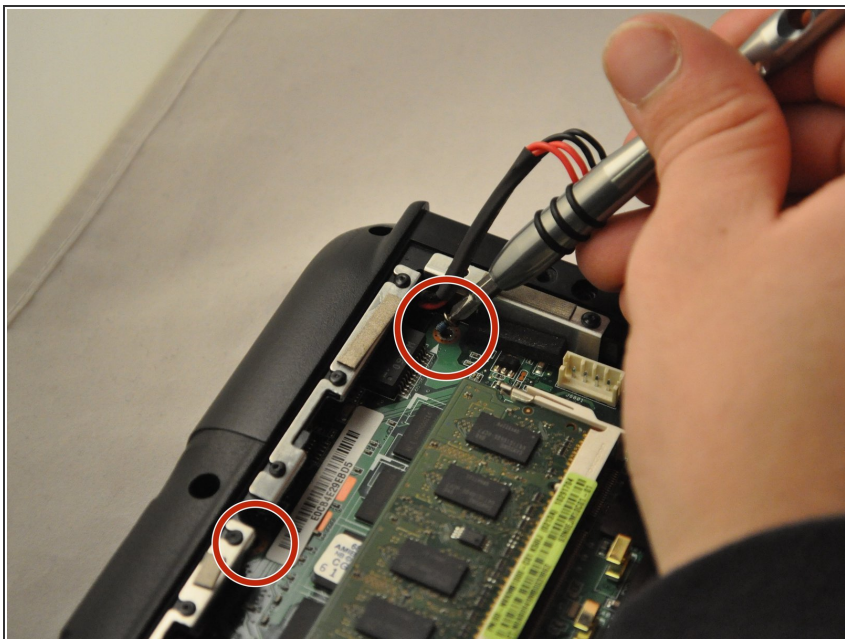
- Unplug the wire cable in the central area of the laptop.

Step 24



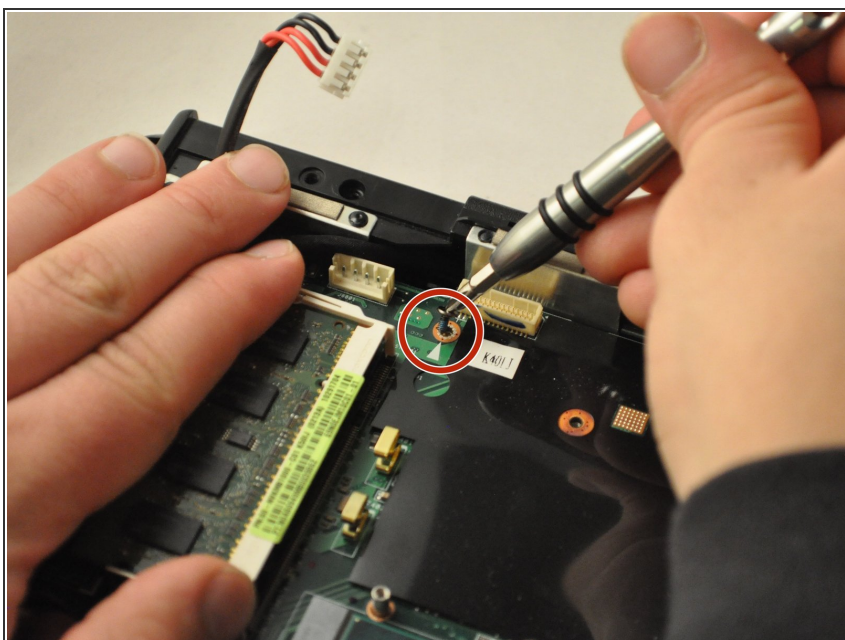
- Unplug the wire and black cables on the motherboard, located in the upper-left corner of the laptop.

Step 25



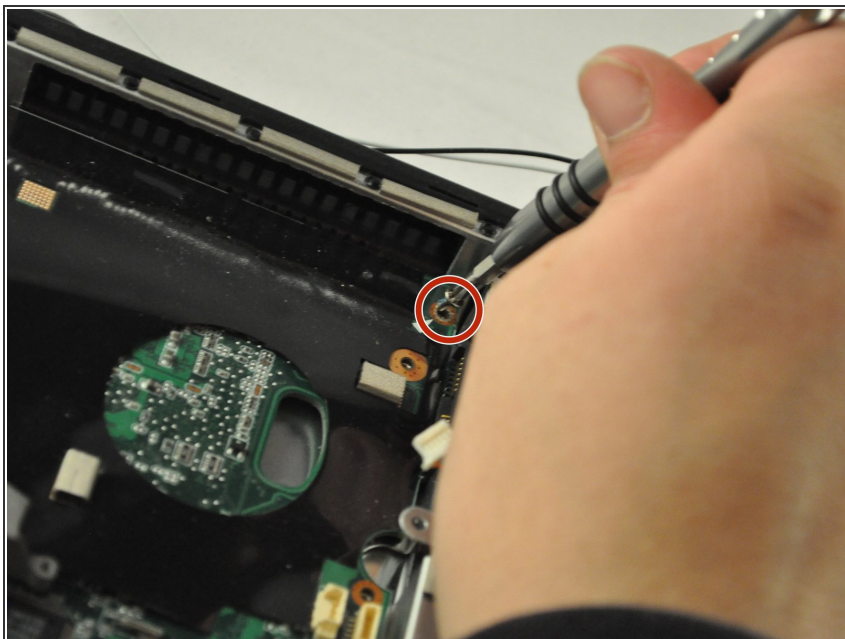
- Using the PH1 screwdriver, unscrew the two .75 mm screws from the top-left corner of the motherboard.

Step 26



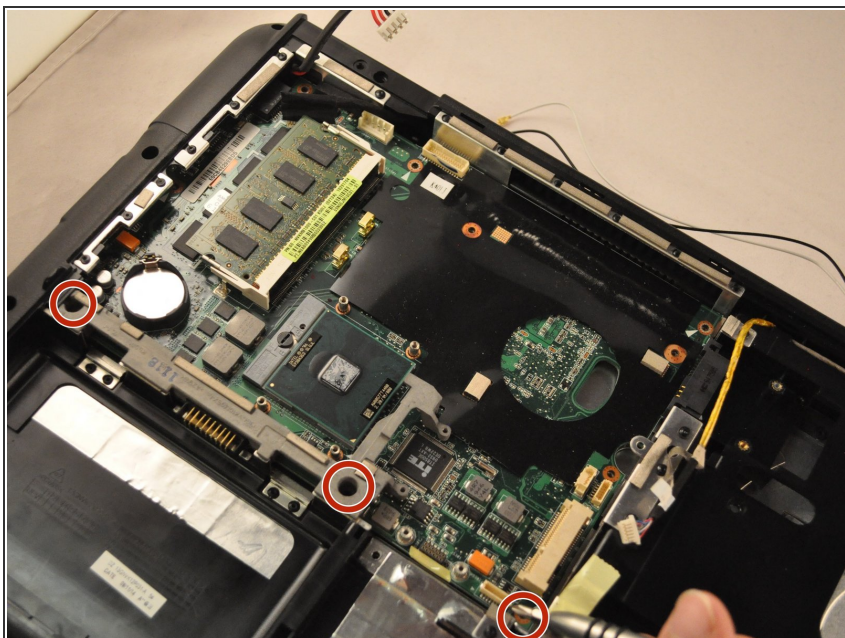
- Using the PH 1 screwdriver, remove the .75 cm screw from the top-middle section of the motherboard.

Step 27



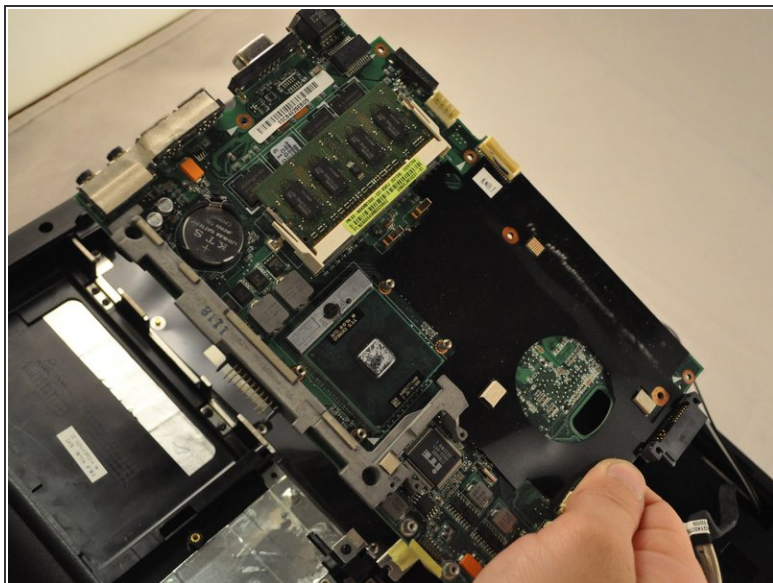
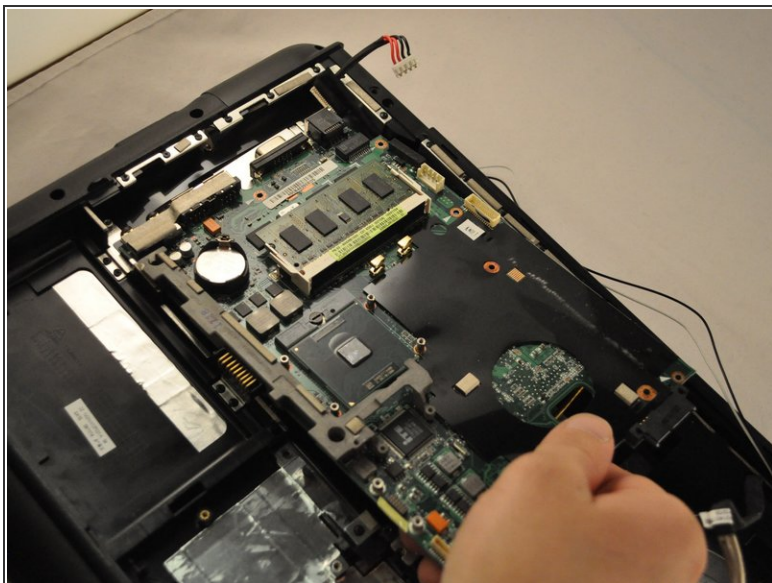
- Using the PH1 screwdriver, remove the .75 mm screw from the top-middle corner of the motherboard.

Step 28



- Using the PH1 screwdriver, remove the three .75 mm screws from the bottom corner of the motherboard.

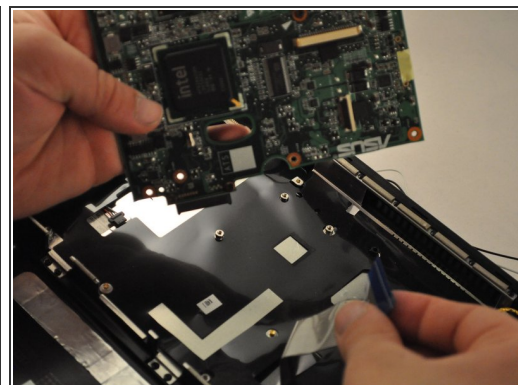
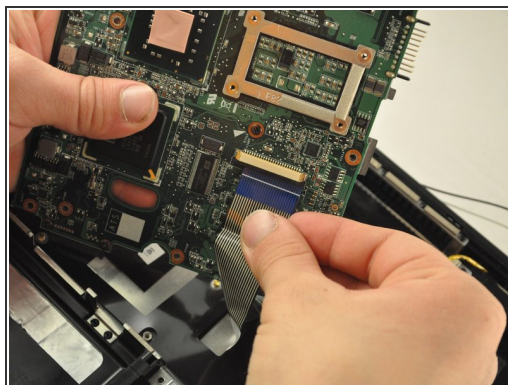
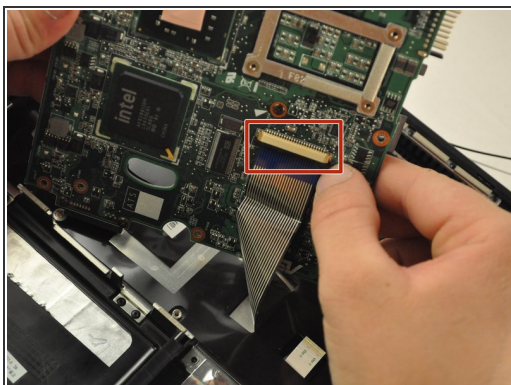
Step 29



⚠ There is a ribbon cable connected to the back of the motherboard. Be careful not to break the ribbon cable.

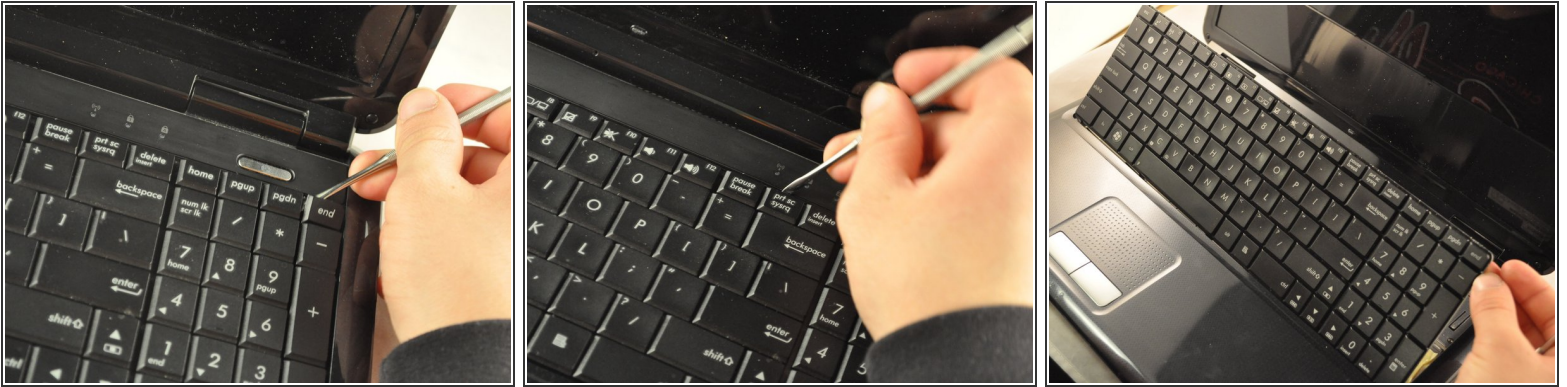
- Slide the motherboard to the right and lift it up, but do not pull it completely out.


Step 30



- Gently unplug the ribbon cable from the underside of the motherboard.

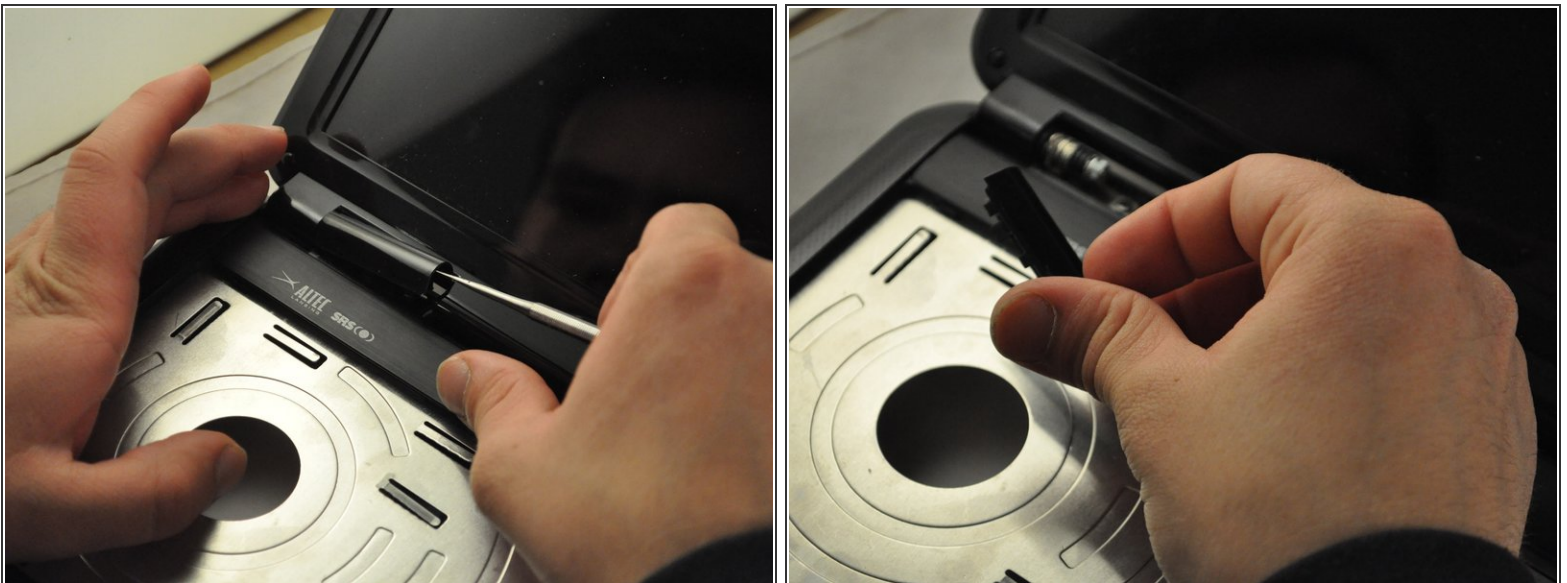
Step 31



 The ribbon cable that was plugged into the motherboard is attached to the keyboard. Be sure not to damage it.

- Use the metal spudger or opening tool across the top edge of the keyboard to pop it out.

Step 32



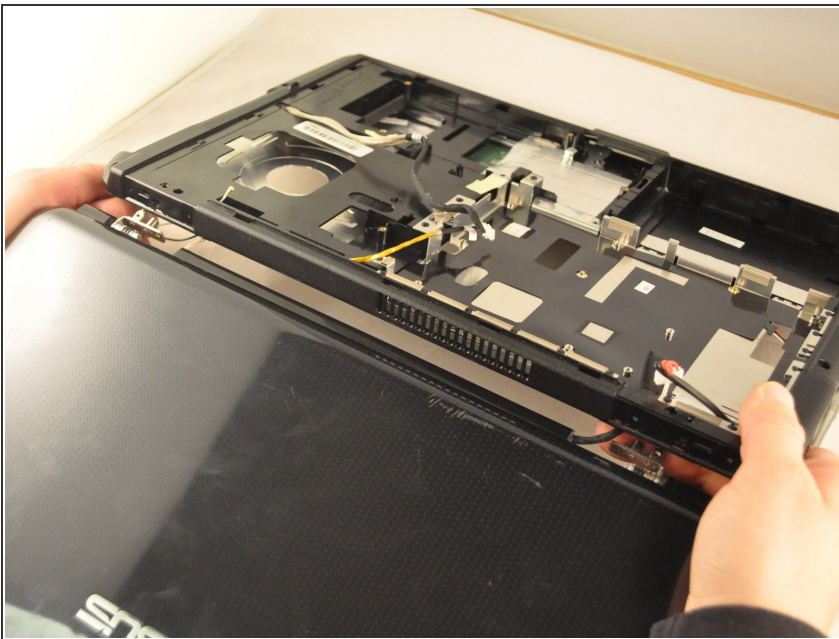
- Use the metal spudger or opening tool to pop out the plastic hinge covers.

Step 33



- Use the PH1 screwdriver to remove the .75 mm screws from the hinges. Each hinge has one screw.

Step 34



- ⚠ Be careful not to damage the cables that are attached to the screen frame. Be sure to pull them through the laptop carefully.
- The screen should separate from the rest of the laptop.

Step 35



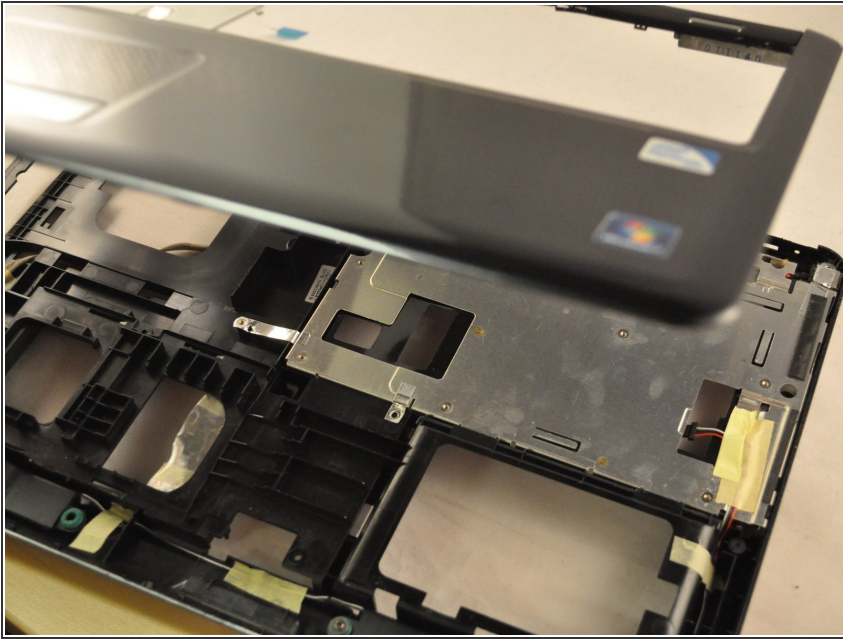
- Using the PH1 screwdriver, remove the .75 mm screw from the bottom-middle section was previously covering.

Step 36



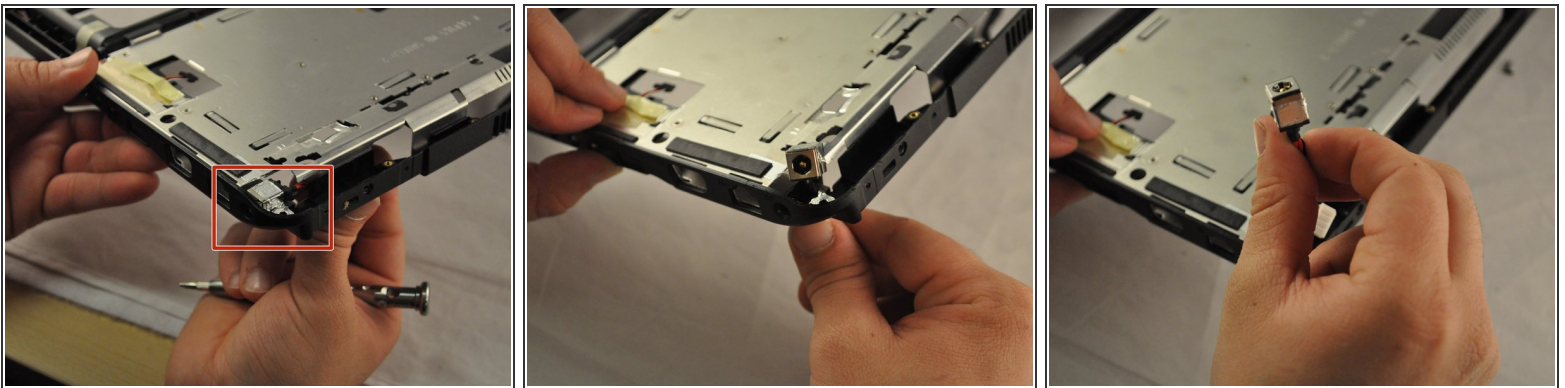
- Using the PH 1 screwdriver, remove the .75 cm screw from the bottom-middle section where the keyboard was previously covering.

Step 37



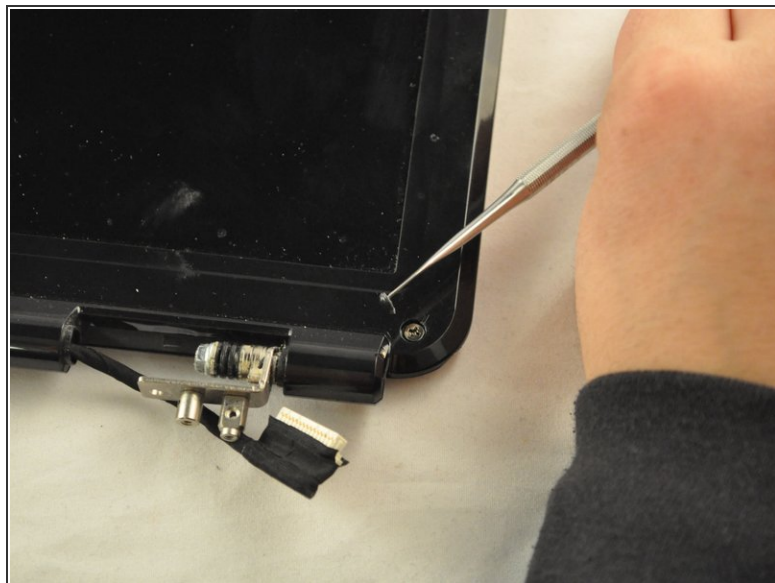
- Lift the front cover off of the laptop.

Step 38



- Flip the laptop back over. The charging port will be located in the top-right corner.

Step 39 — Screen replacement 15.6"



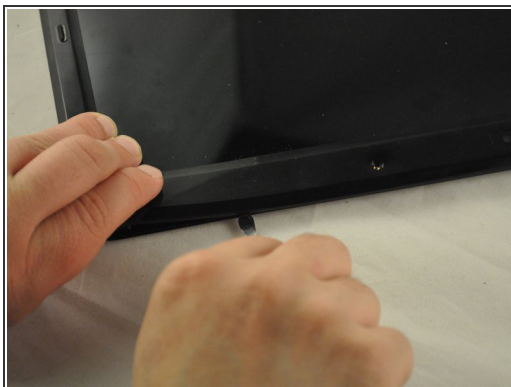
- Using a metal spudger, pop off the six rubber screw covers.

Step 40



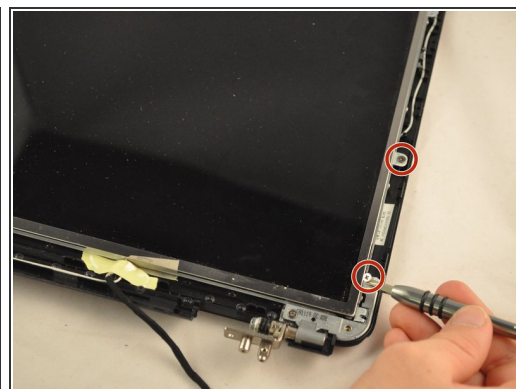
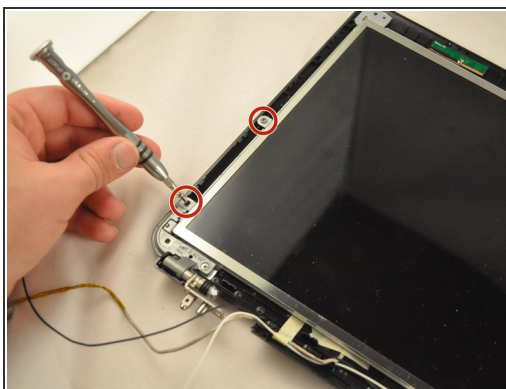
- Using the PH1mm screwdriver, remove the six .75 mm screws from the front of the screen frame.

Step 41



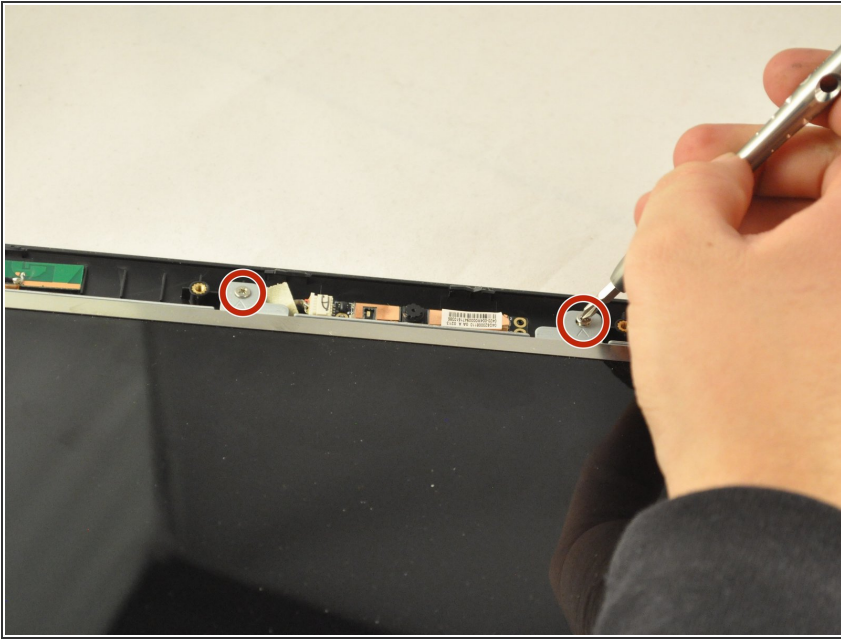
- Use the plastic opening tool or spudger along the edge of the frame, to pry off the frame.

Step 42



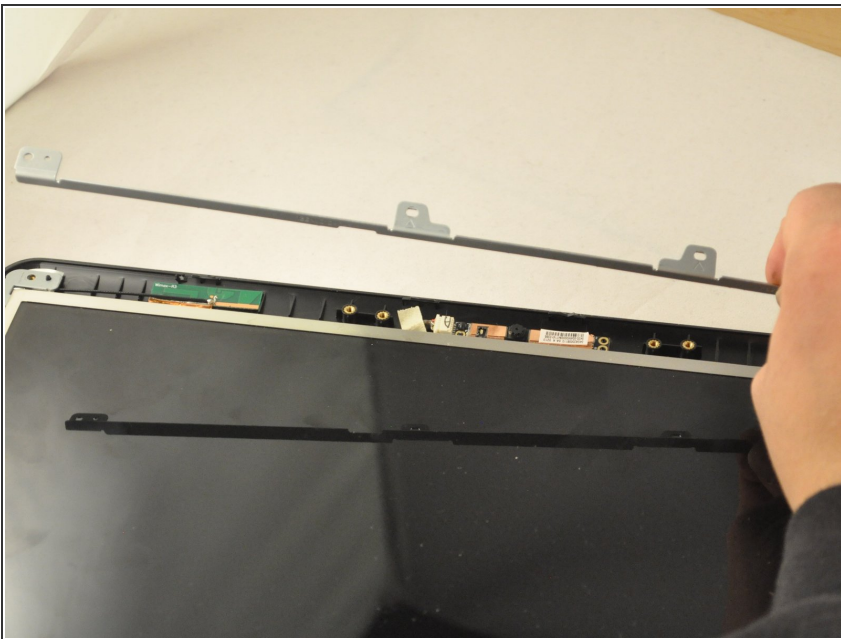
- Using the PH1 screwdriver, remove the four bottom .75 mm screws from the screen frame.

Step 43



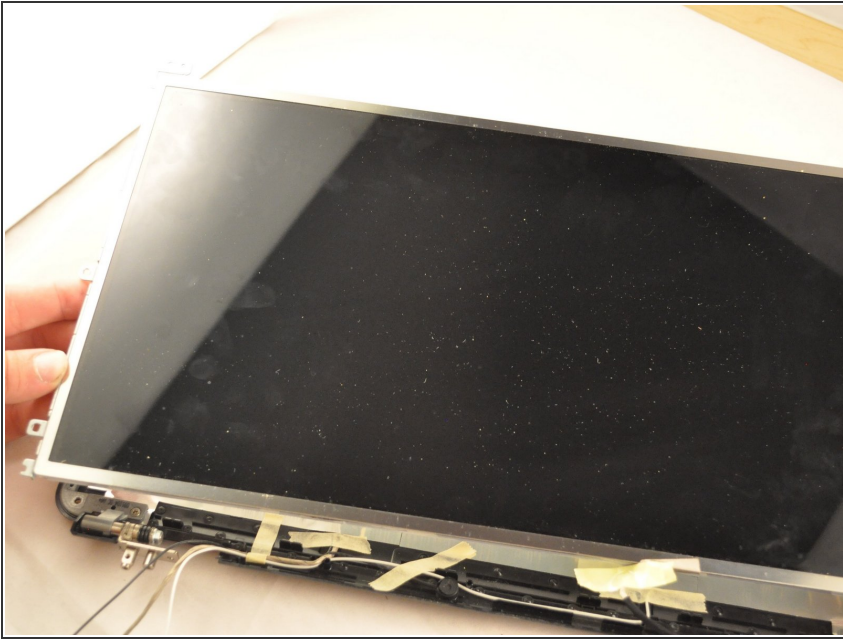
- Using the PH1 screwdriver, remove the two .75 cm screws from the top of the screen frame.

Step 44



- Lift the bracket off the top of the screen frame.

Step 45



- Lift the screen should out.

To reassemble your device, follow these instructions in reverse order.