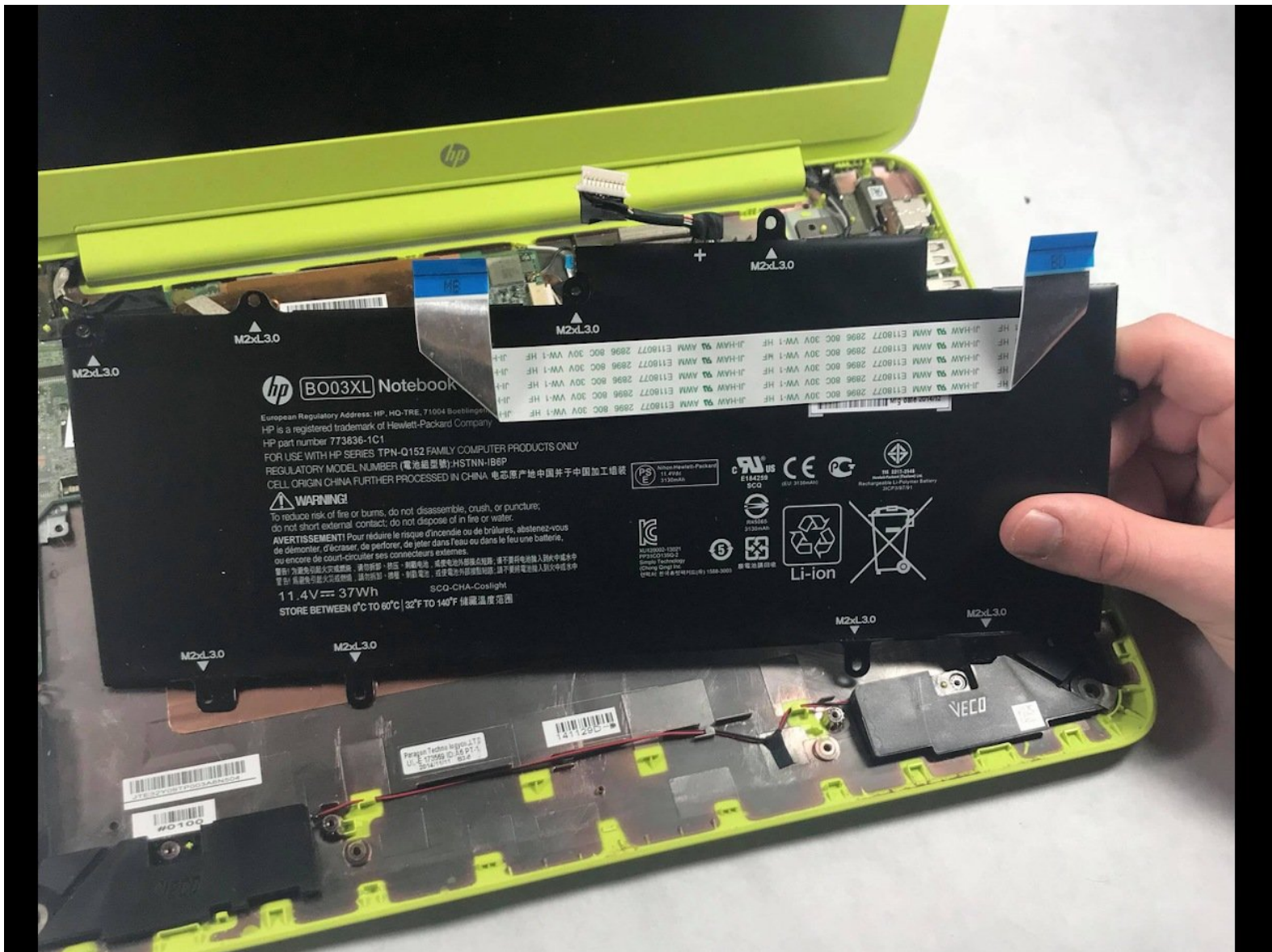




Chromebook 14-x015wm Battery Replacement

Here, I will be demonstrating how to properly open up the Chromebook and replace the battery.

Written By: Cameron Sinclair



INTRODUCTION

You are able to disassemble your laptop and, as a last result, purchase a new one, through a variety of different sellers. One of the most popular would be Amazon or HP themselves. The battery is an integrated 59Wh battery and it's expected use time. 5 hours



TOOLS:

- [Phillips #0 Screwdriver](#) (1)
 - [iFixit Opening Tools](#) (1)
-

Step 1 — Battery



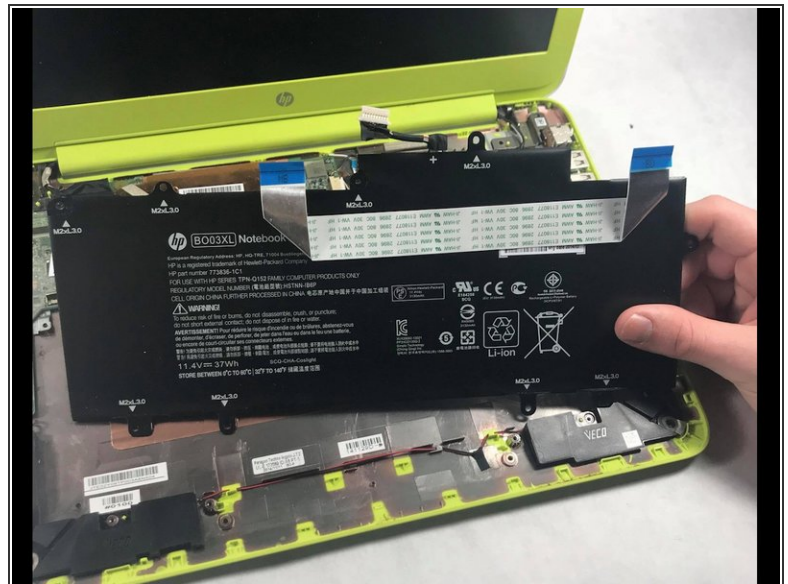
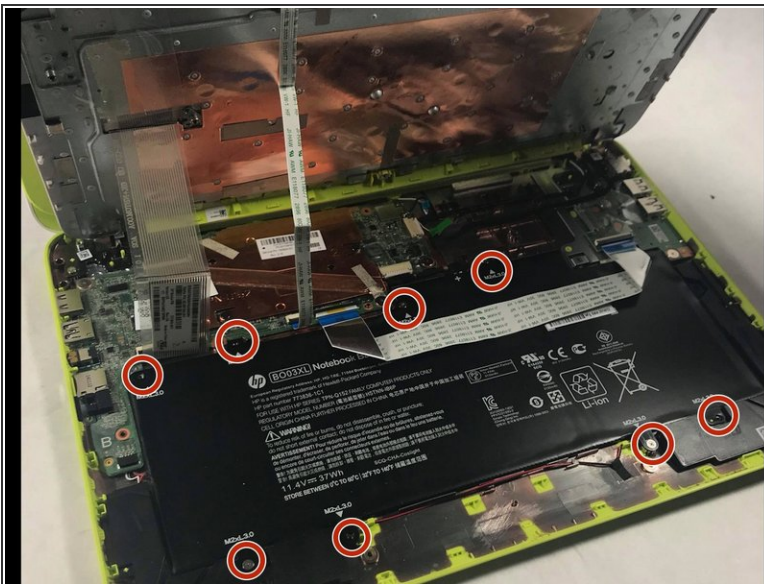
- Turn the Chromebook upside down so that the bottom is facing upwards.
- Remove the small rubber circles from all four corners.
- Remove the other three rubber pads from the bottom
- Proceed to unscrew all the screws.
- ⓘ Keep the screws on a magnetic mat or in a secure location and keep track of which screws went where.

Step 2



- Flip the laptop back over and open it so that the keyboard is revealed to you.
 - Use a plastic opening tool to pry off the keyboard. It's slightly difficult to get off, but go evenly around all four sides until it pops out.
- ⚠ Be careful of the ribbons underneath that connect the keyboard to the internal components.

Step 3



- The long, flat, black component that takes up the majority of the space is the battery.
 - All you are required to do is unscrew the screws attached to the battery and then gently remove the battery from the Chromebook.
- ⓘ Make sure to keep track of where the screws came from.

To reassemble your device, follow these instructions in reverse order.