



MSI GS63VR 6RF Stealth Pro Hard Drive Replacement

Is the hard drive malfunctioning when saving...

Written By: Nabil Ranjbar



INTRODUCTION

Is the hard drive malfunctioning when saving files? If so, this hard drive guide will allow you to remove the hard drive.

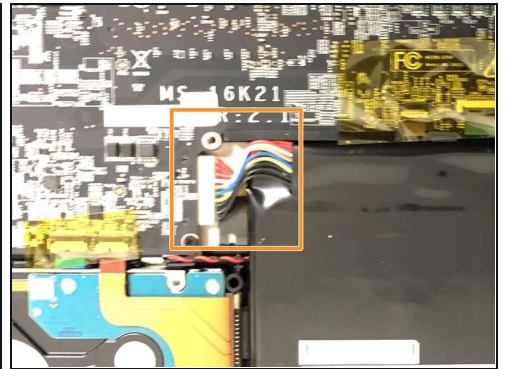
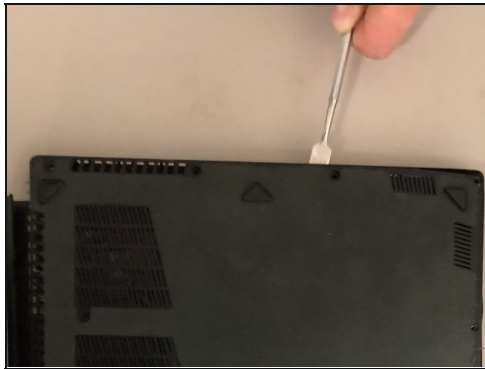
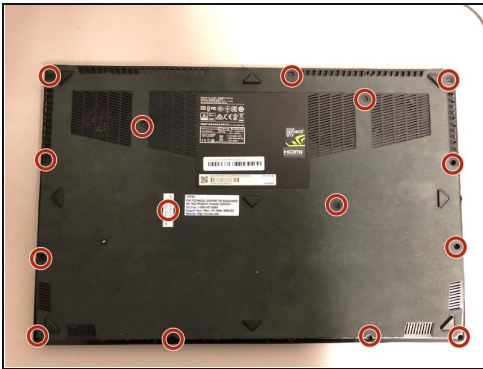
TOOLS:

Phillips #00 Screwdriver (1)

Pick Tool (1)

iFixit Opening Tool (1)

Step 1 — Hard Drive



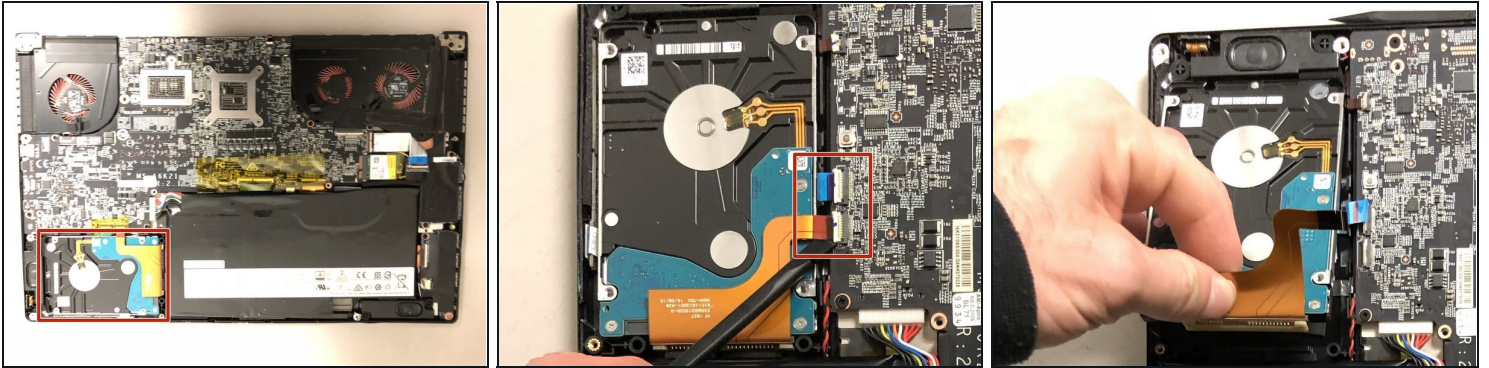
 Turn off the laptop before proceeding.

- Unscrew the 15 screws on the bottom panel using a Phillips #00 screwdriver.
- Pry open the back cover with a plastic prying tool.

 Unplug the battery cable from the motherboard to prevent a ground fault. Either use your hand or a pair of [tweezers](#) to unplug the battery cable.

 Too much pressure from the spudger can break the clips that secure the back panel, but some flex is not dangerous.

Step 2



- Disconnect the SATA cables from the motherboard using a plastic spudger.
- Gently pull out the SATA cables out of the ports.
- Grab the auburn color cable and lift up the hard drive. Slide out the hard drive while holding onto the cable.

⚠ Cables are fragile. Do not apply excessive force.

To reassemble your device, follow these instructions in reverse order.