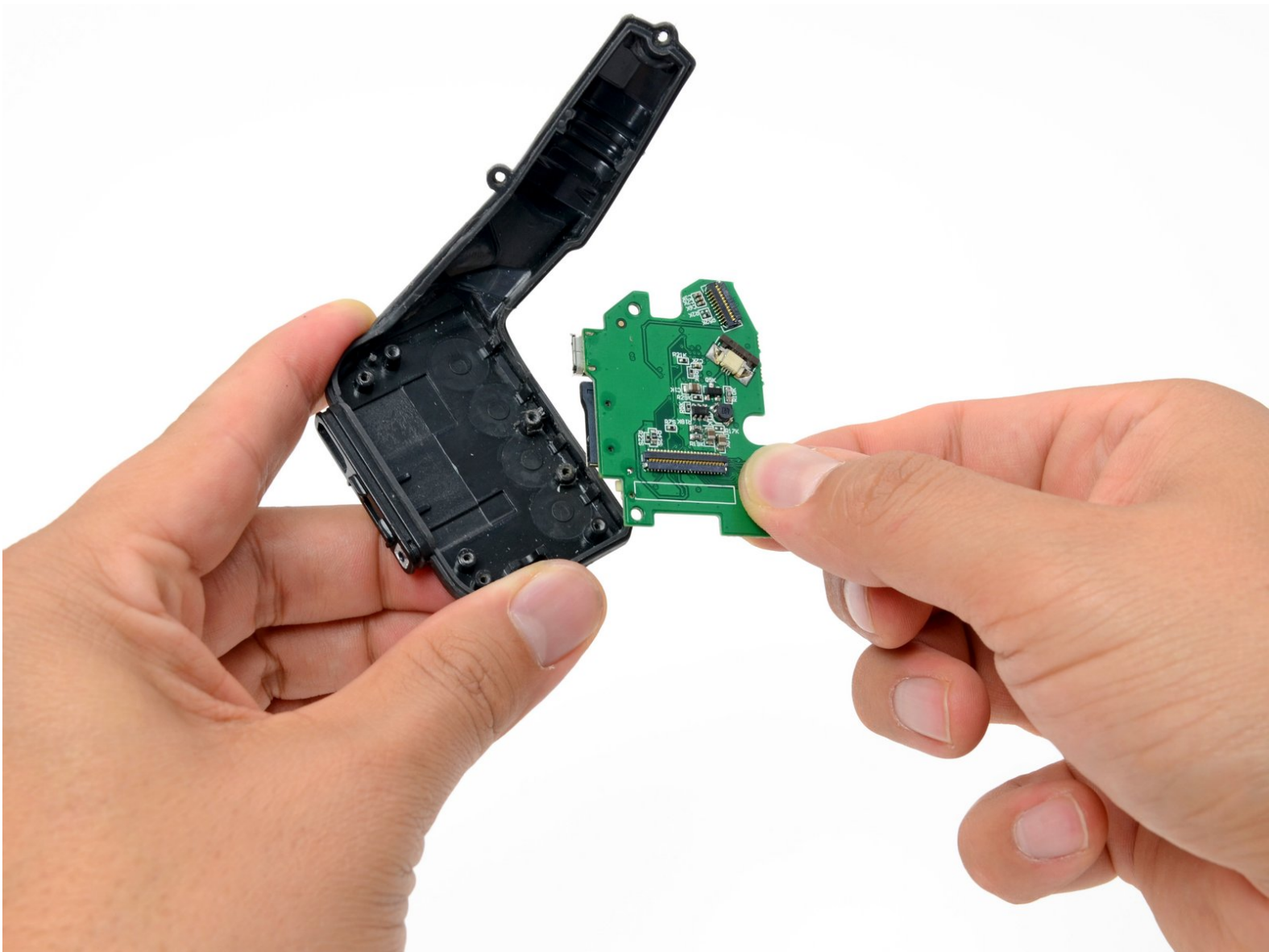




# Zeal Optics iON Button Board Replacement

iON button board replacement.

Written By: Eric Flores



## INTRODUCTION

No button response or viewfinder image in your Zeal Optics iON goggles? Use this guide to replace a faulty button board, which also connects to the viewfinder lens assembly.



### TOOLS:

- [Phillips #00 Screwdriver](#) (1)
  - [Spudger](#) (1)
  - [Tweezers](#) (1)
-

## Step 1 — Lens



**i** In the next few steps, you will be releasing the clips that hold the lens in place. Do not try to completely remove the lens until all the clips have been released.

- Hold the iON in your hands with your thumbs on the clips next to the middle of the lens.
- Pull the rubber housing apart to release the first two clips.

## Step 2



- Grab the inside of the plastic nose rest with your thumb and index finger.
- Rotate the nose rest upwards until you feel that it is free from the lens.

## Step 3



✦ Rotate the device 180 degrees.

- Grab the top of the goggle frame that holds the camera assembly.
- Rotate the frame outwards until you feel that the clips inside it are free.

## Step 4



- While firmly holding the goggles with the palm of one hand, grab the top right corner of the frame and rotate it away from the lens.



## Step 5



- ❗ The lens should now be barely attached to the frame. If it still feels firmly attached, repeat any necessary steps to free the clips.
- While holding the goggles in one hand, use the other to grab the lens from opposite ends, and rotate it out of the housing and away from any remaining clips.

## Step 6 — Camera Assembly



- Remove the four 7.1 mm Phillips screws securing the camera housing to the goggle frame.

## Step 7



- Peel back the rubber battery cover from the inner left side of the frame.
- While firmly holding the battery cover, pull the bottom of the strap mount cover up and off of the frame

## Step 8




- Once the bottom is free, continue pulling to free the top of the strap mount cover from the frame.



## Step 9



- Pull the battery out of its recess in the frame.

 The battery is connected to the entire camera assembly and cannot be completely removed by itself.

## Step 10



- Peel the rubber keypad cover up from the inner right side of the frame.
- While firmly holding the keypad cover, pull the top of the strap mount cover up and off of the frame

## Step 11



- Once the bottom is free, continue pulling to free the bottom of the strap mount cover from the frame.

## Step 12




- Hold the strap mount cover away from the frame and remove the keypad.

## Step 13



- Grab the viewfinder housing and pull it out of its recess.

 Just like the battery, the viewfinder housing is connected to the rest of the camera assembly and cannot be removed by itself.

## Step 14



- Place one of your hands near the center of the frame with your thumb next to the camera housing.
- With your other hand, grab the camera housing and pull it up and out of the frame.



## Step 15



- Remove the viewfinder assembly by pulling it through the opening in the top of the frame.

## Step 16



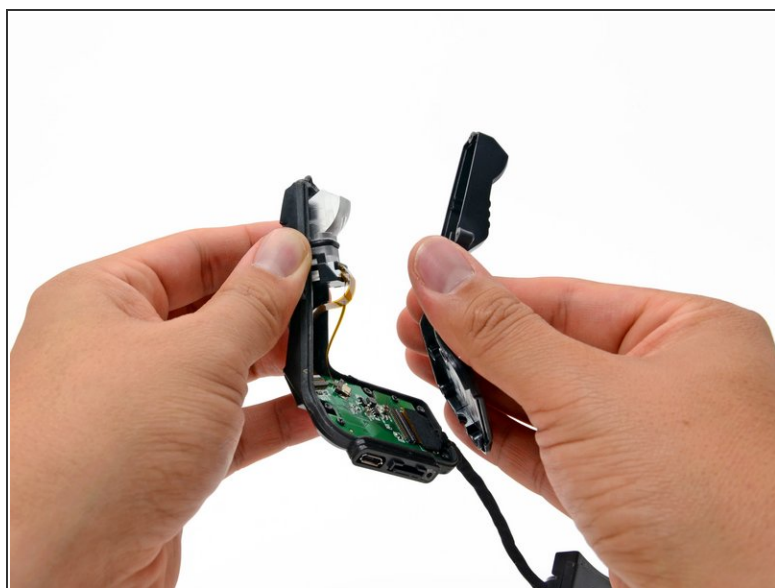
- In the same manner described above, remove the battery from the frame.

## Step 17 — Viewfinder Lens Assembly



- Remove the two 7.5 mm Phillips screws on the front of the viewfinder housing.
- ⓘ Flip the viewfinder housing over 180 degrees.
- Remove the four 7.1 mm Phillips screws from the back of the viewfinder housing.

## Step 18



- Pull the two halves of the viewfinder housing apart.



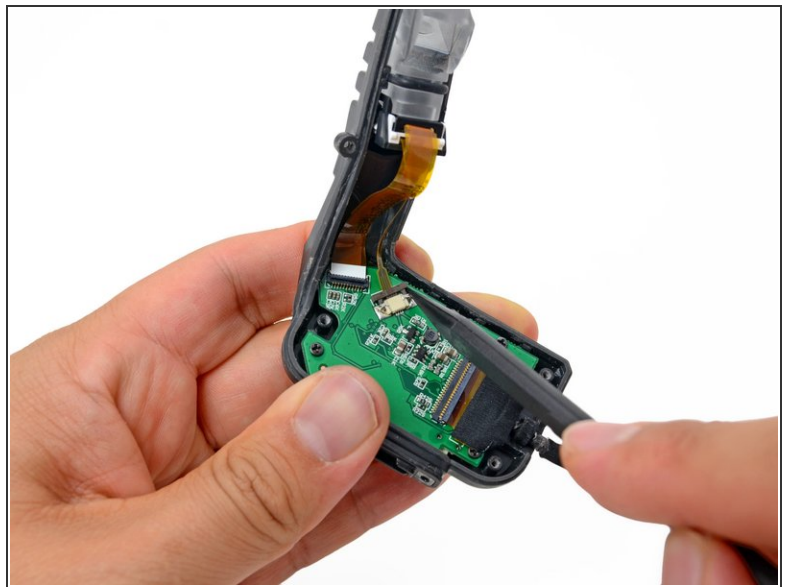
## Step 19



- Use the tip of a spudger to flip up the retaining flap on the LCD ribbon cable ZIF connector.

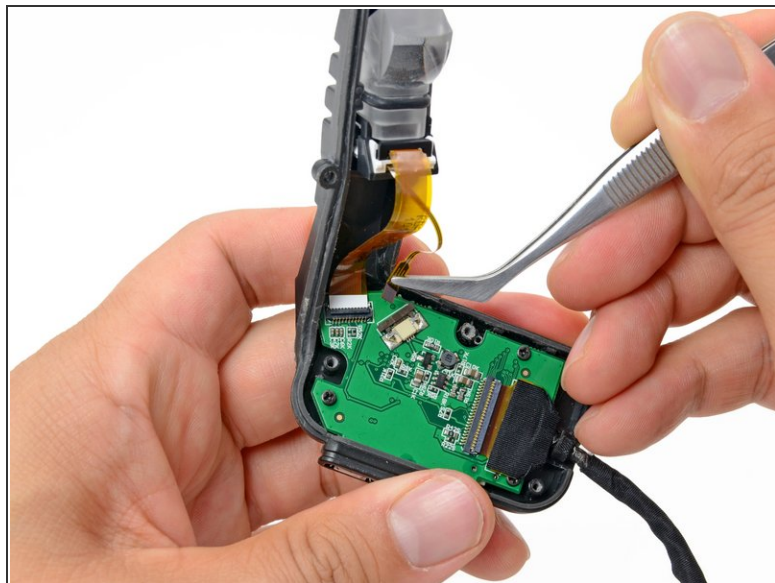
⚠ Be sure to pry up on the hinged flap, **not** the connector itself.

## Step 20



- Use the tip of a spudger to push out the retaining clip on the viewfinder backlight ribbon cable ZIF connector.

## Step 21



- Using your fingers or tweezers, gently pull out the backlight ribbon cable from its connector on the button board.

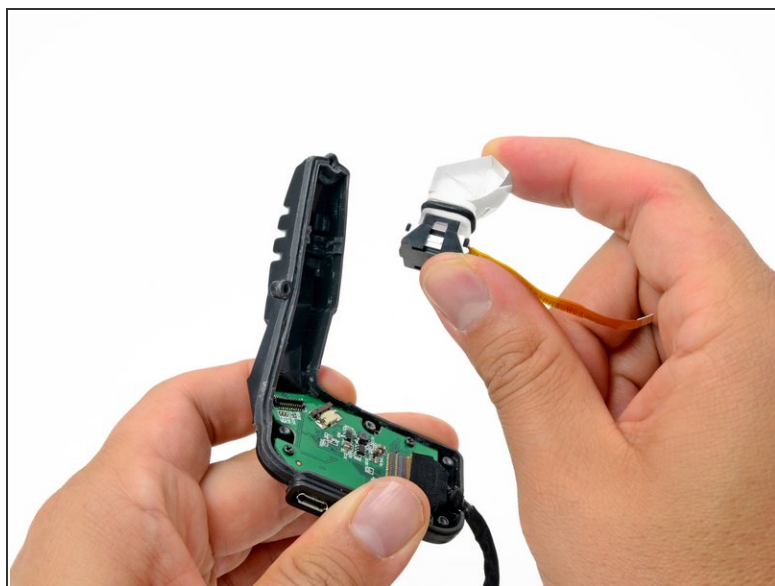
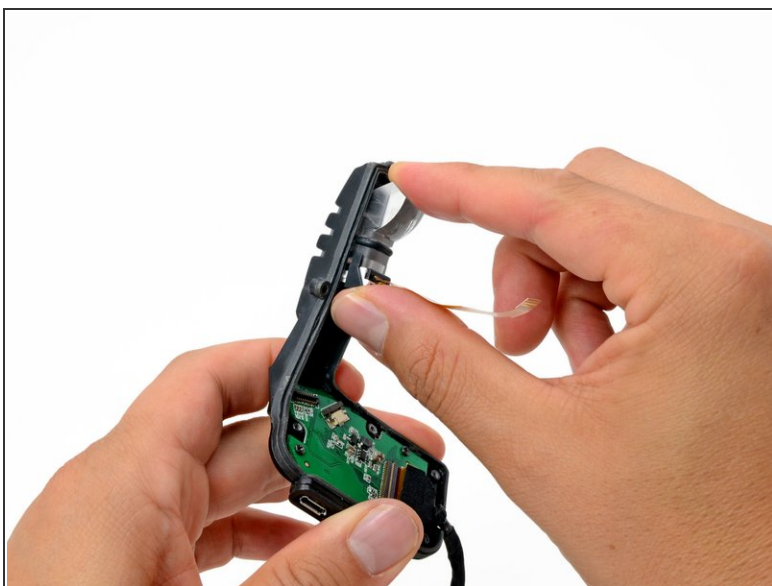
## Step 22



- Using your fingers or tweezers, remove the LCD ribbon cable from its connector on the button board.



## Step 23



- Remove the viewfinder lens assembly from the viewfinder housing.

## Step 24 — Button Board



- Use the tip of a spudger to flip up the retaining flap on the button board data cable ZIF connector.

⚠ Be sure you are prying on the hinged flap, **not** the socket itself.

## Step 25



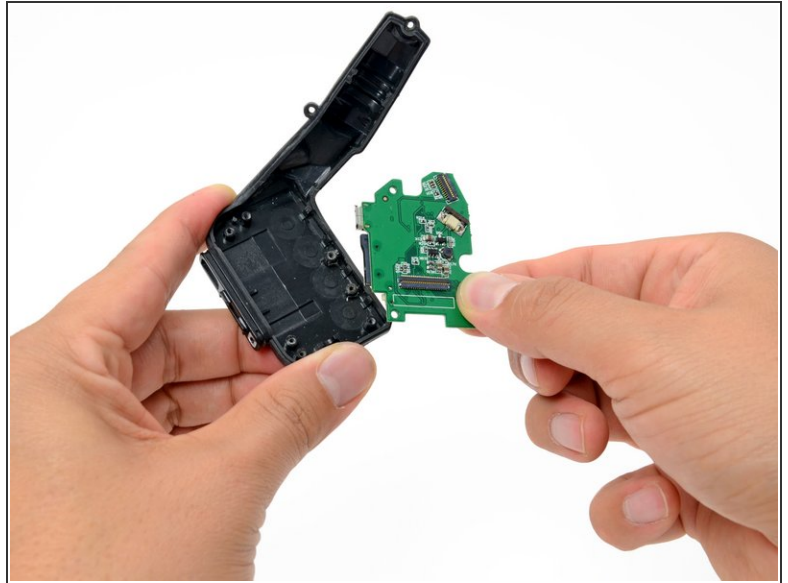
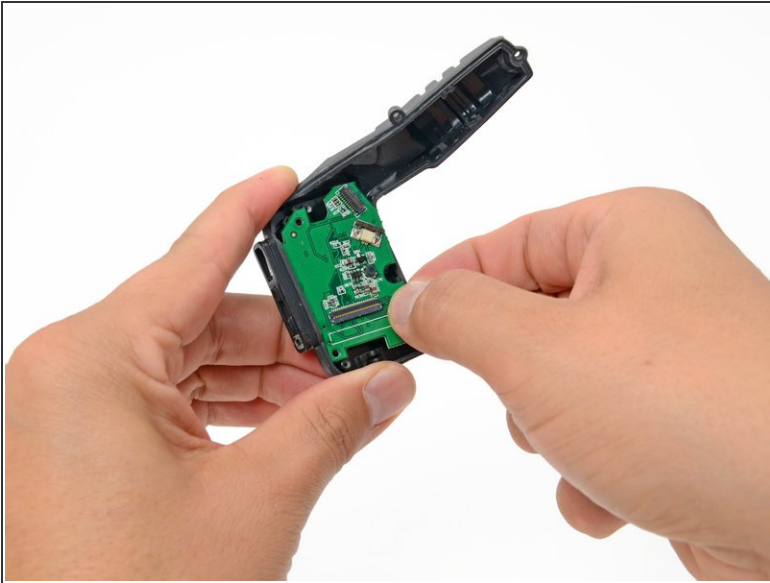
- Remove the button board data cable from its socket on the button board.

## Step 26



- Remove the three 4.5 mm Phillips screws securing the button board to the viewfinder housing.

## Step 27



- Remove the button board from the viewfinder housing.

To reassemble your device, follow these instructions in reverse order.