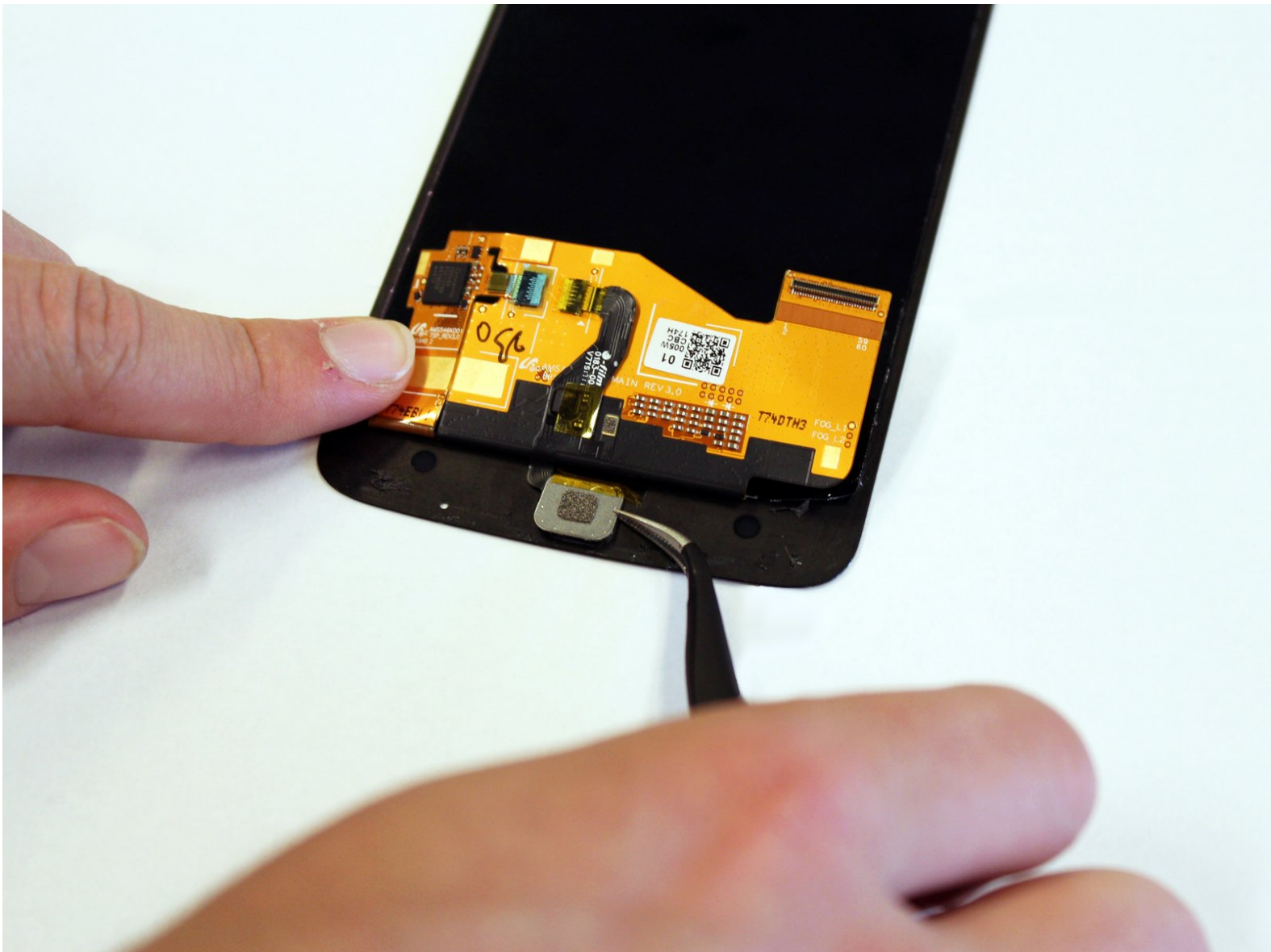




Moto Z Fingerprint Sensor Replacement

How to replace the Moto Z home button or fingerprint sensor.

Written By: Miriam Lam



INTRODUCTION

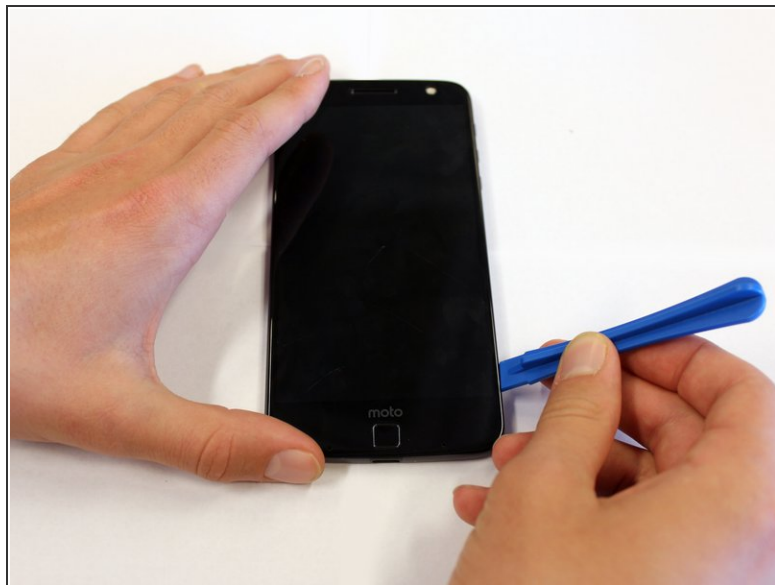
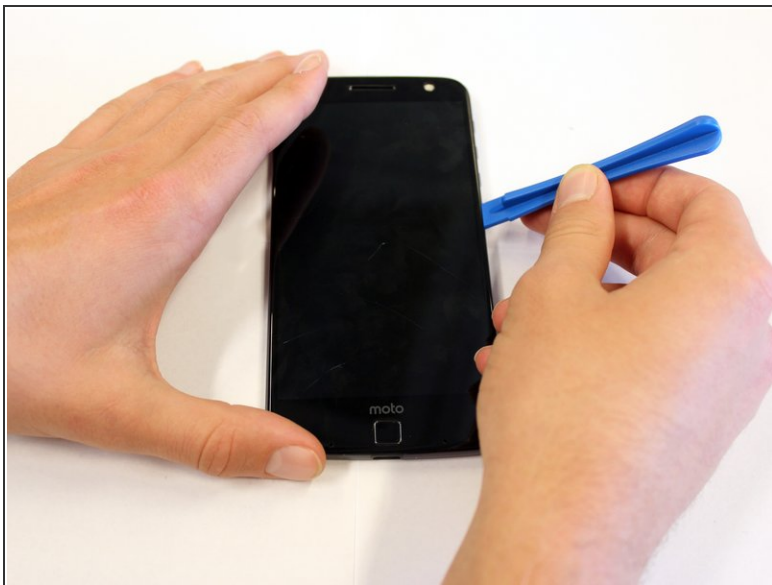
This guide will teach you how to remove the device's fingerprint sensor.



TOOLS:

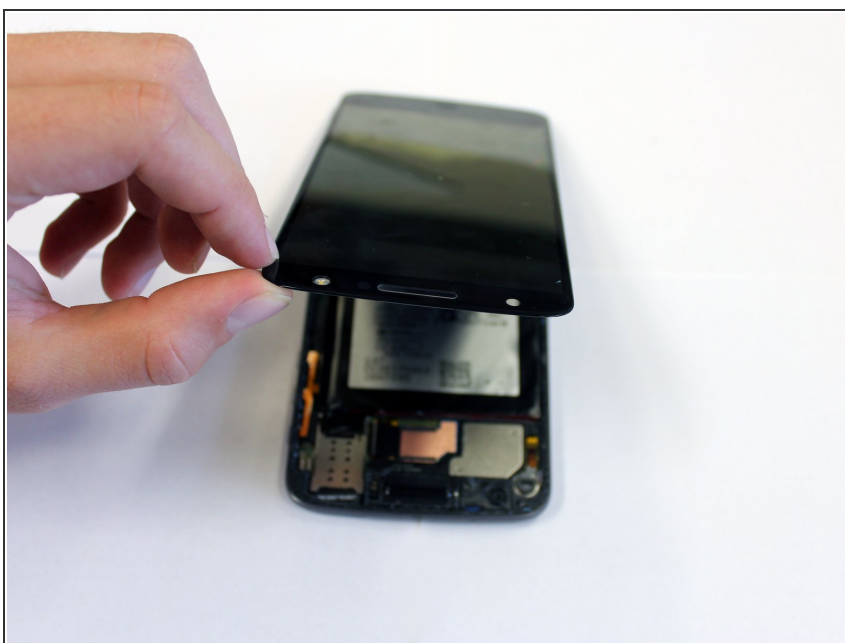
- [iOpener](#) (1)
 - [Suction Handle](#) (1)
 - [iFixit Opening Picks set of 6](#) (1)
 - [Spudger](#) (1)
 - [iFixit Opening Tools](#) (1)
 - [Tweezers](#) (1)
-

Step 1 — Display



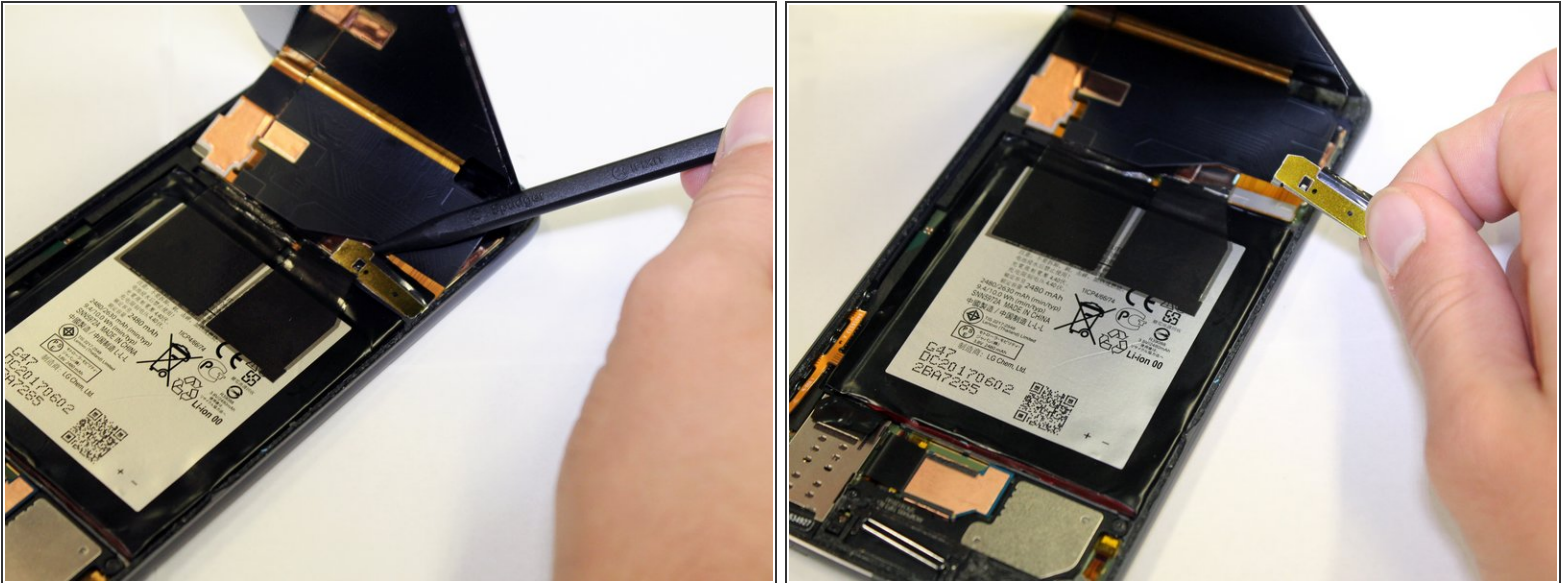
- Position the opening tool under the lid of the screen.
- Slide the opening tool around the edge of the screen to loosen the adhesive.

Step 2



- Lift the screen off the body from the top.

Step 3



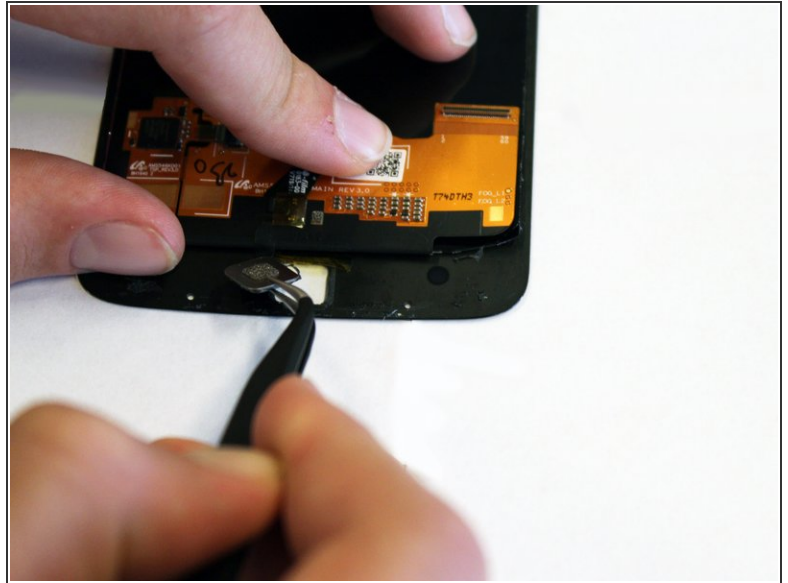
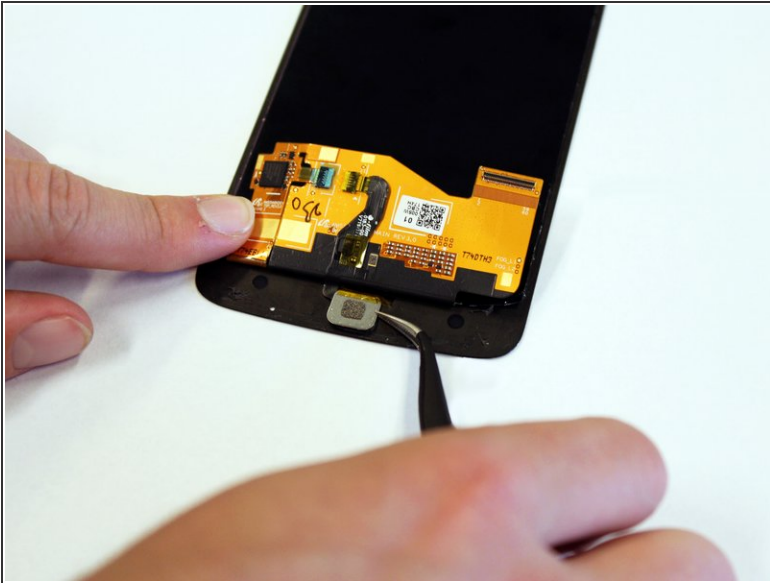
- To disconnect the screen from the body, stick the spudger under one of the corners of the gold tab.
- Lift up, removing the tab from the device.

Step 4



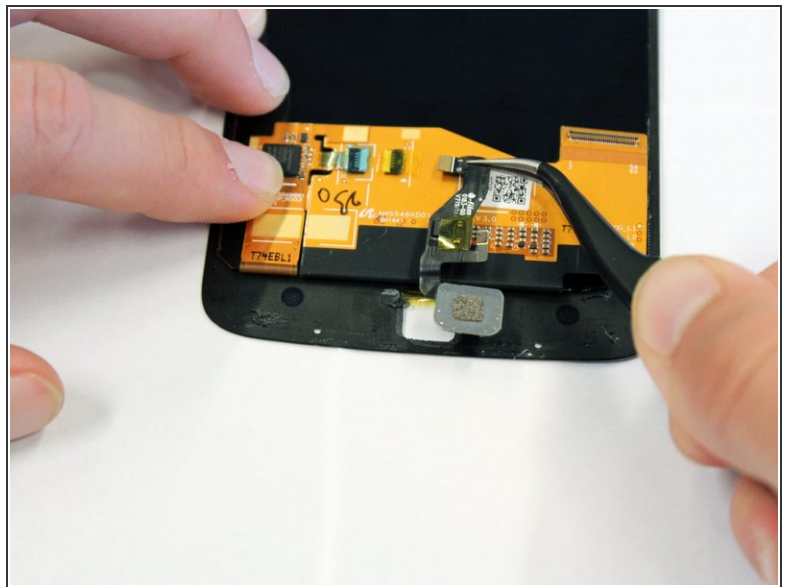
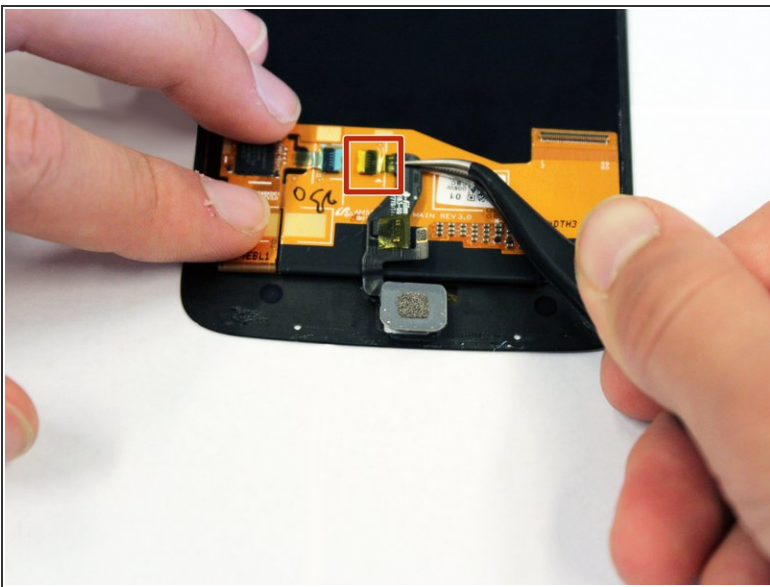
- Pull the screen up to fully remove it.

Step 5 — Fingerprint Sensor



- Insert the tweezers under the metal backing of the sensor.
- Lift up the backing until it is detached from the phone.

Step 6



- With the tweezers, grab the black connector located just above the fingerprint scanner.
- Pull the connector to the right until it is detached from the phone.

To reassemble your device, follow these instructions in reverse order.