



Lenovo IdeaCentre AIO 510S-23ISU Hard Drive Replacement

This guide will show you how to replace the hard drive located in the computer.

Written By: Jackson Blake



INTRODUCTION

This requires only a Phillips head screwdriver. Be aware that only 2.5" hard drives fit in this computer.



TOOLS:

- [Spudger](#) (1)
- [Phillips Head Screwdriver: Size PH1](#) (1)



PARTS:

- [1 TB SSD / Upgrade Bundle](#) (1)
- [250 GB SSD / Upgrade Bundle](#) (1)
- [500 GB SSD / Upgrade Bundle](#) (1)
- [2 TB SSD](#) (1)

Step 1 — Stand Base



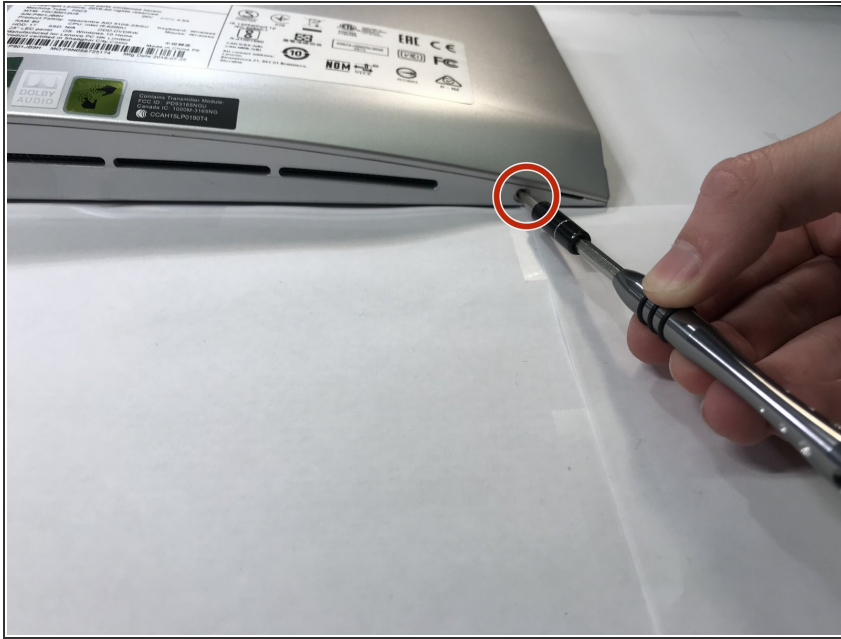
- Turn off the computer, unplug all cables, and let it cool down. Lay the computer flat on its screen.
- ⓘ Make sure that the work surface is flat and has nothing sharp on it.

Step 2



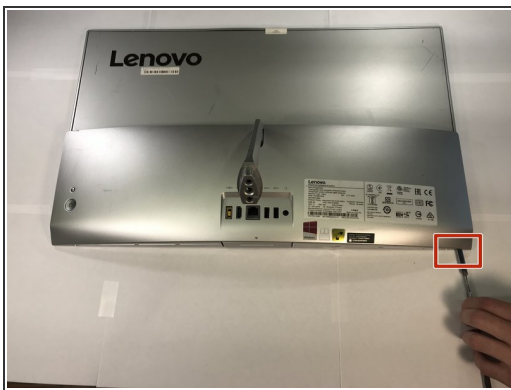
- Remove the monitor stand screw in the bottom of the stand, and remove the stand completely.

Step 3 — Back Cover



- Remove the two screws on the bottom of the computer, one on each side.

Step 4



- Locate the slot on the right side of the computer next to the screw hole. Use a plastic opening tool or spudger to pry off the rear cover. (Don't be afraid to use a little force.)

Step 5



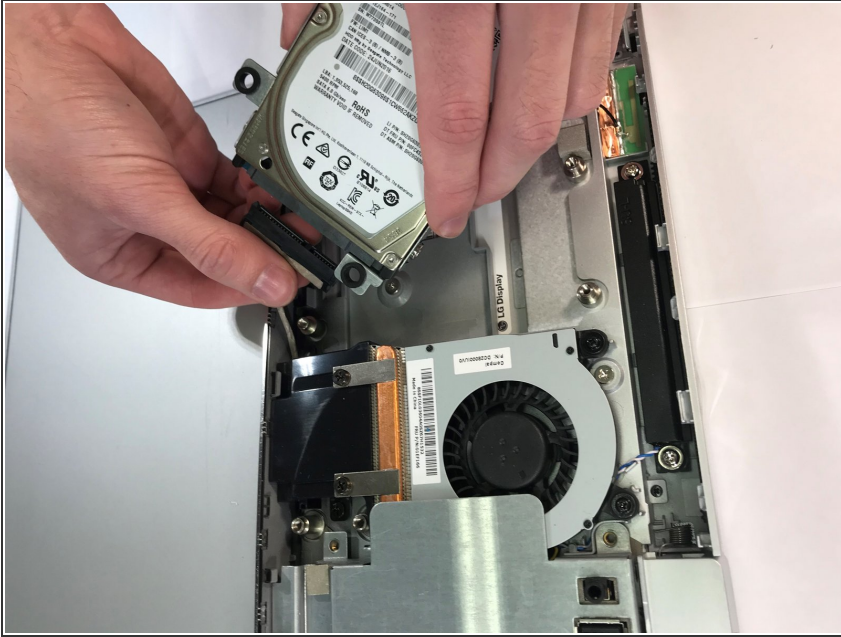
- Once it has been separated, lift to remove.

Step 6 — Hard Drive



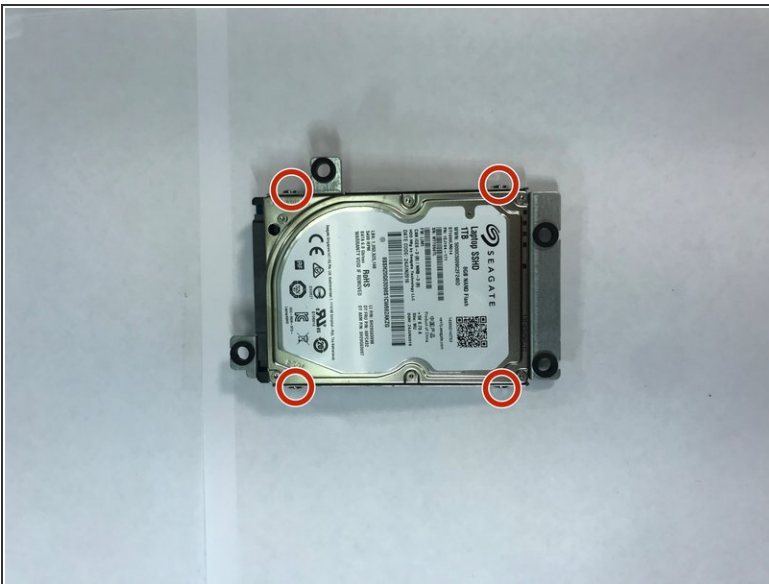
- Unscrew the four screws that secure the hard drive enclosure.

Step 7



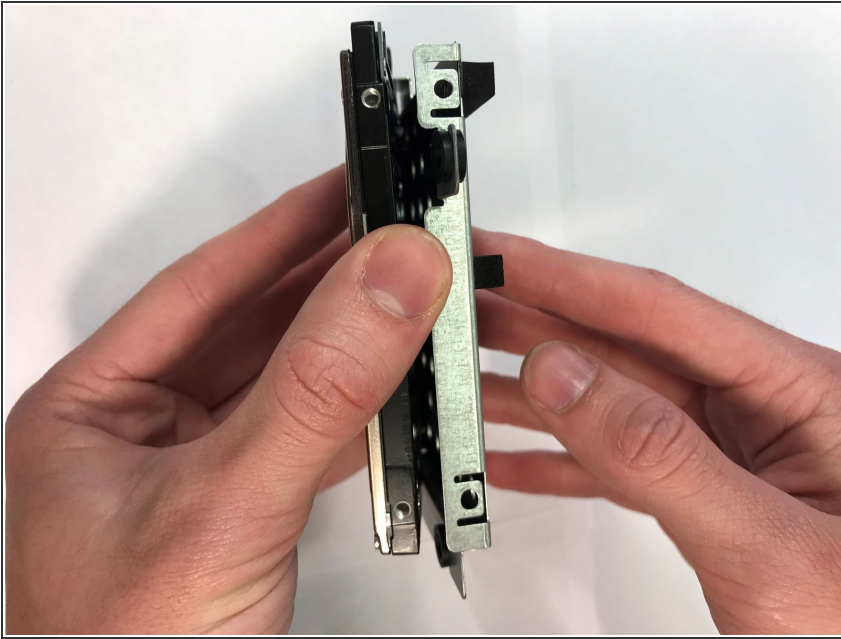
- Unplug the SATA cable. Lift to remove the hard drive enclosure.

Step 8



- Unscrew the four screws that hold hard drive enclosure to the hard drive, located on the side of the enclosure.

Step 9



- Lift the hard drive up to remove it from the enclosure.

To reassemble your device, follow these instructions in reverse order.