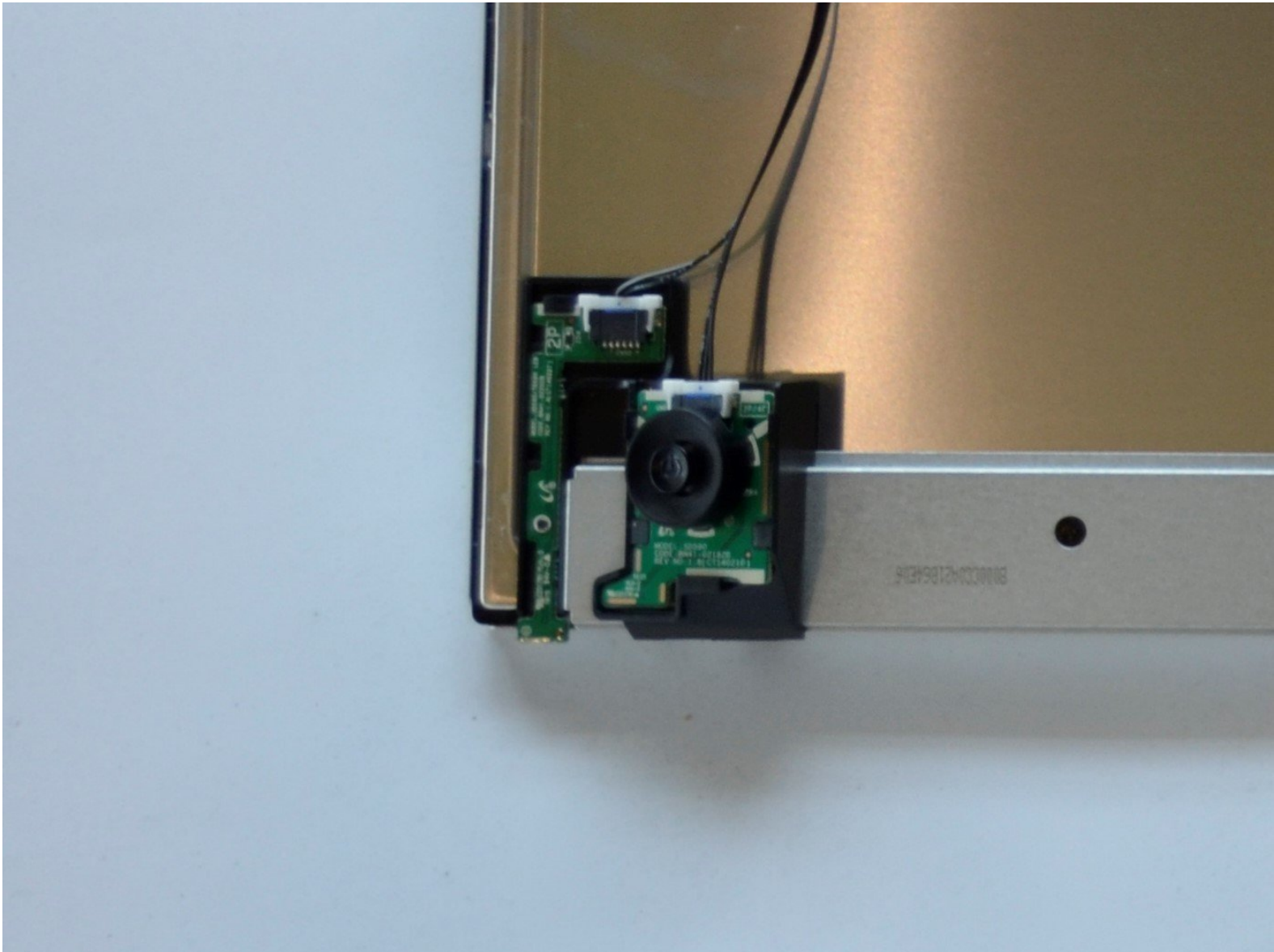




Samsung U28E510 Jog Button Replacement

This guide will help users replace a damaged or nonoperational jog button.

Written By: Jake Ritter



INTRODUCTION

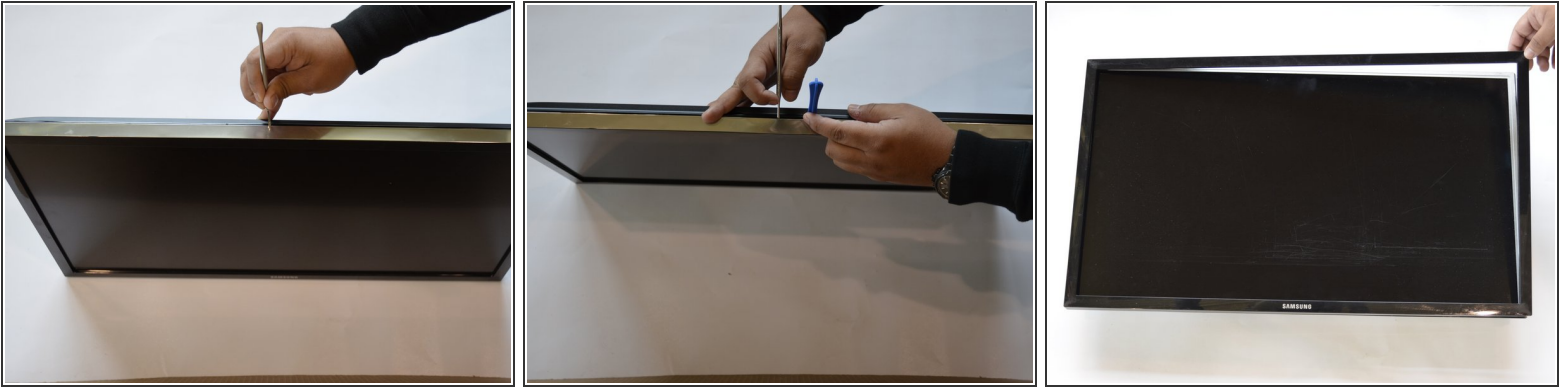
This guide will assist users to replace a damaged or nonoperational jog button.



TOOLS:

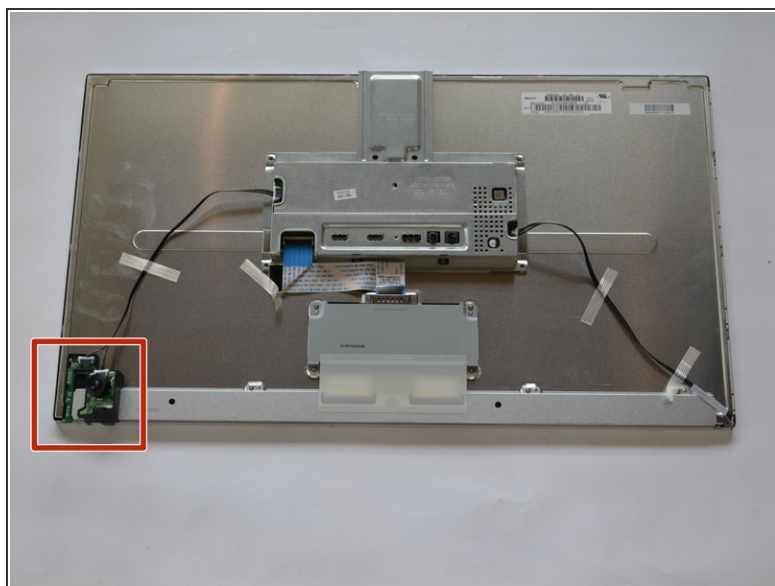
- [iFixit Opening Tools](#) (1)
 - [Phillips #2 Screwdriver](#) (1)
-

Step 1 — Jog Button



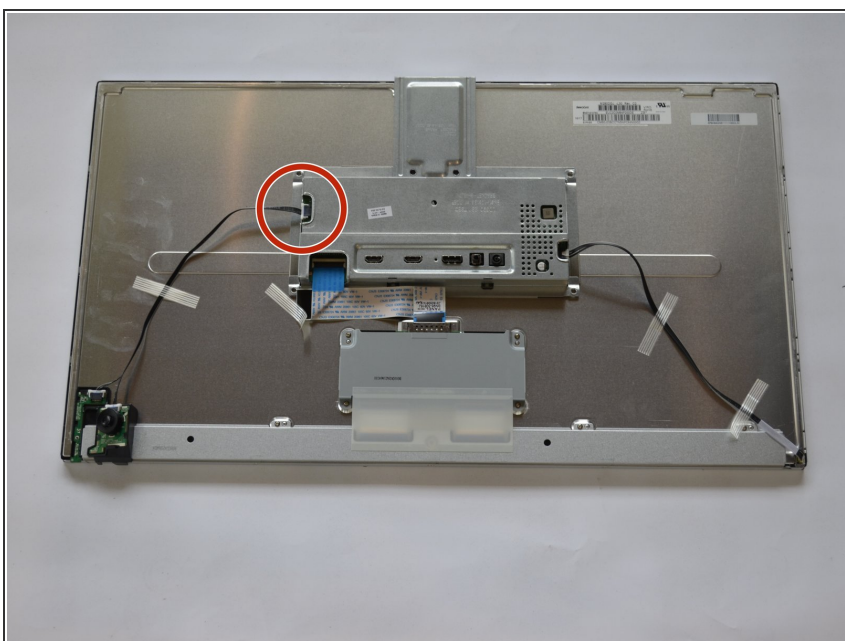
- Start by removing the screen bezel.
- Use a pair of spudgers to pry between the bezel and the rest of the monitor.
- ⓘ Ideally use plastic tools as this step could damage the edges of the screencover.
- lay monitor on its back and pull off screen cover.

Step 2



- Flip the monitor over so that it is facedown.
- remove the single screw in the middle using a #2 Phillips screwdriver.
- Remove the backing to reveal the Jog Button.

Step 3



- Disconnect signal cable to power supply board.
- Remove and replace jog button.

To reassemble your device, follow these instructions in reverse order. Ensure the bezel completely snaps in place all around monitor.