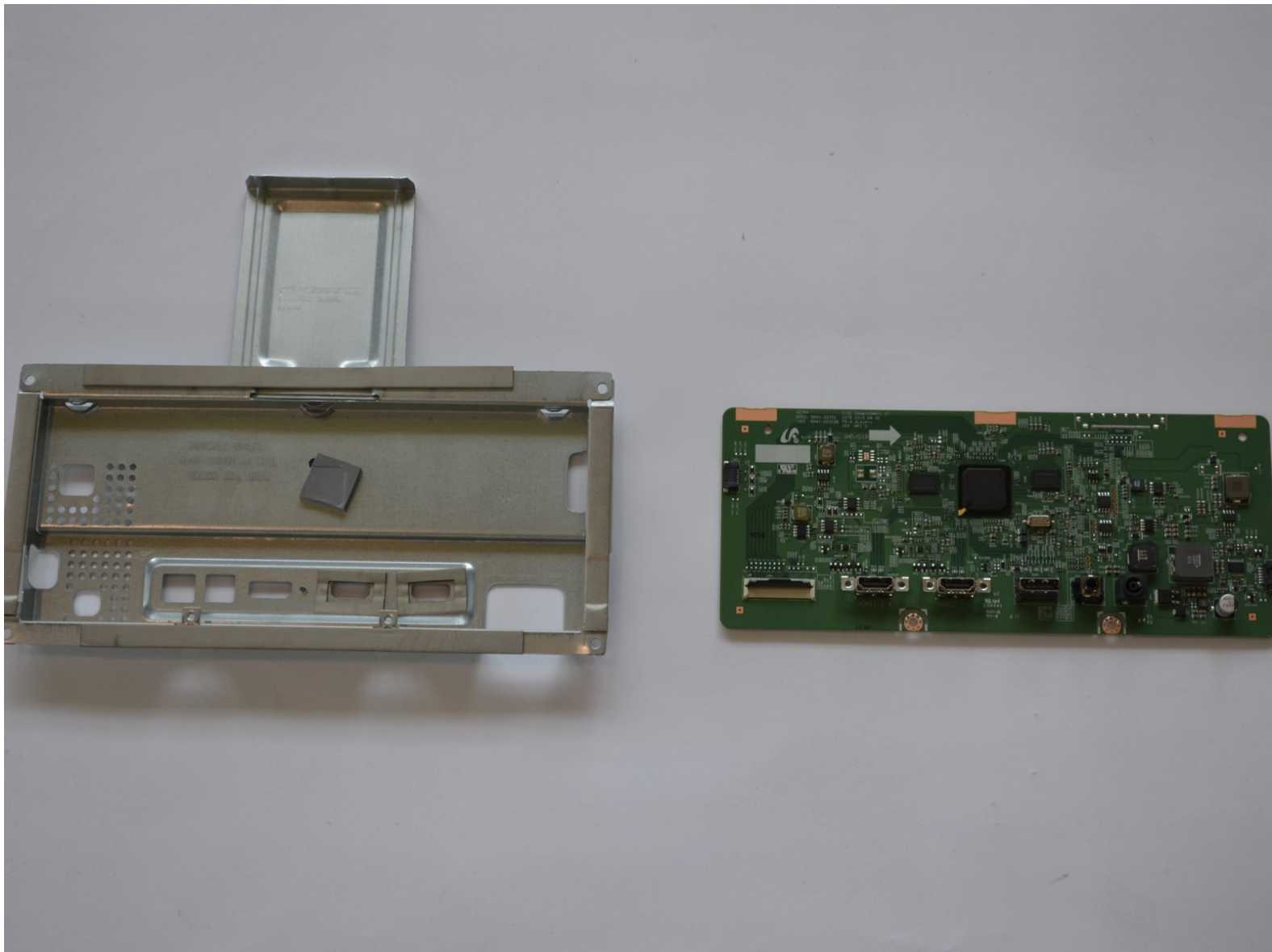




# Samsung U28E510 Motherboard Replacement

Replace the motherboard to fix LCD monitor power problems.

Written By: Melina



---

## INTRODUCTION

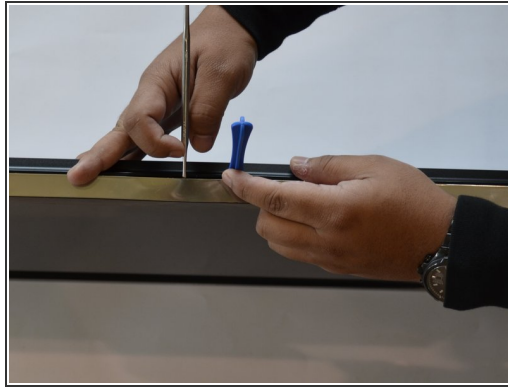
This guide will assist you to open up the monitor and remove the motherboard. Useful if the monitor does not power on after replacing power supply, or is turning on/ off repeatedly.

---

### TOOLS:

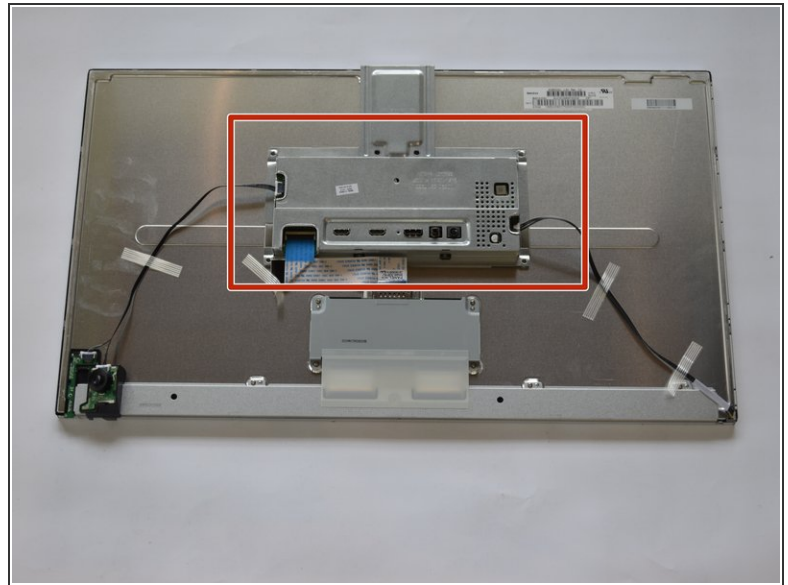
- [Phillips #2 Screwdriver](#) (1)
  - [iFixit Opening Tools](#) (1)
-

## Step 1 — Motherboard



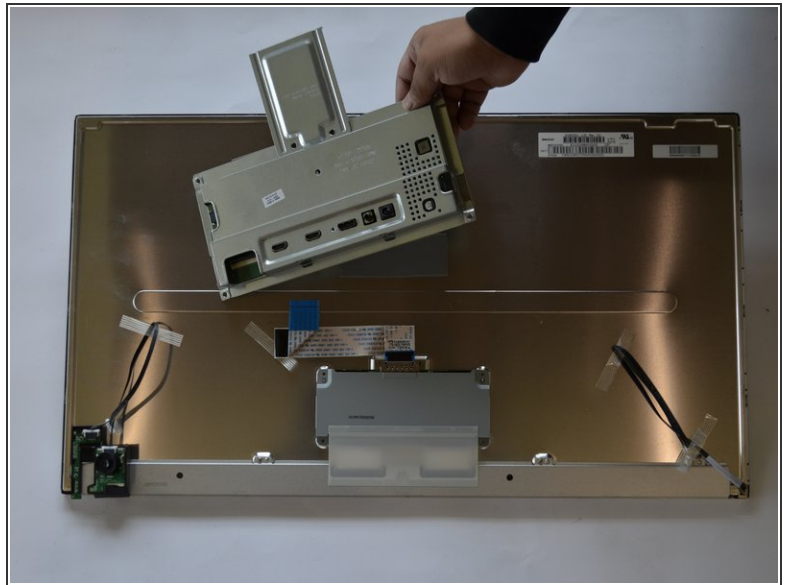
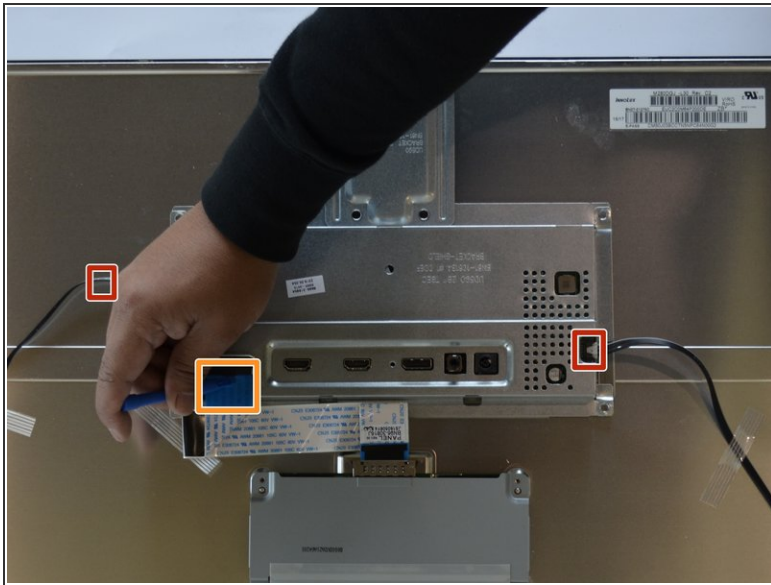
- Start by removing the screen bezel.
- Use a pair of spudgers to pry between the cover and the rest of the monitor.
- ⓘ Ideally use plastic tools as this step could damage the edges of the screencover.
- Lay monitor on its back and pull off screen cover.


## Step 2



- Flip the monitor over so that it is facedown.
- Remove the single screw in the middle using a #2 Phillips screwdriver.
- Remove backing to reveal signal/power board in center.

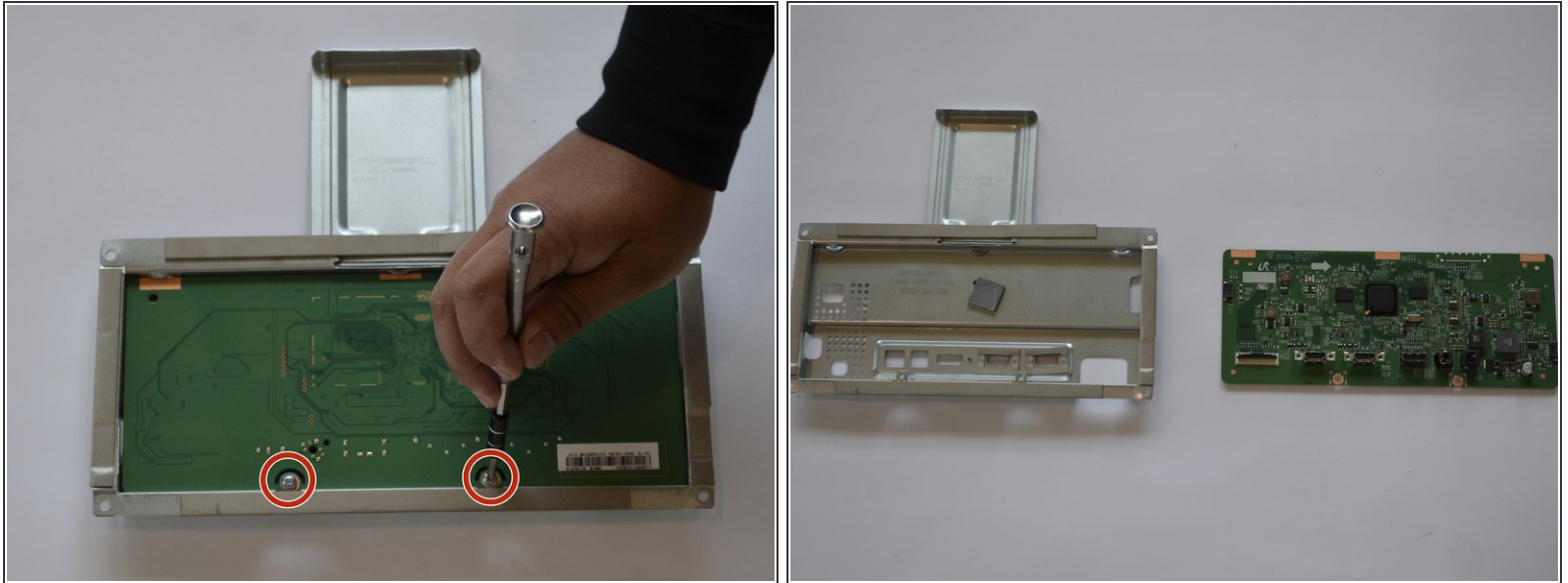
### Step 3



 Ensure to grip the connection plugs when removing wires to prevent damage to wires.

- Unplug wires connected to supply (one on the left and one on right).
- Disconnect the signal ribbon cable.
- Pull the motherboard shield off—it's adhered in place by tape, so some force may be needed.

## Step 4



- Lay piece upside down.
- Use a #2 Phillips screwdriver to remove the two screws that secure the motherboard.
- Lift the motherboard out of the metal shield.

To reassemble your device, follow these instructions in reverse order. Ensure the bezel snaps in place all around monitor.