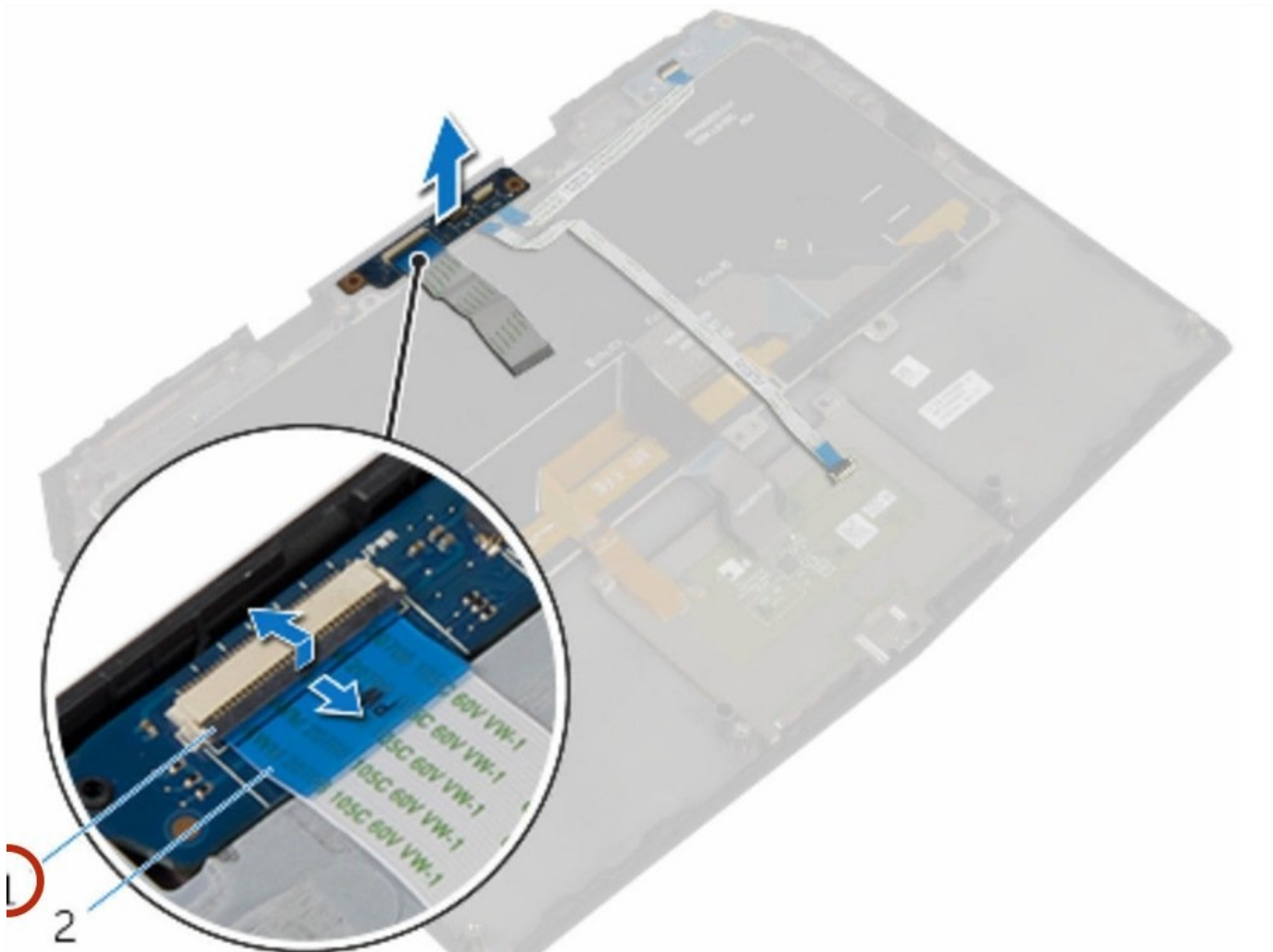


Dell Alienware 13 R2 Power-Button Board Replacement

In this guide, we will be showing you how to...

Written By: Terrence15



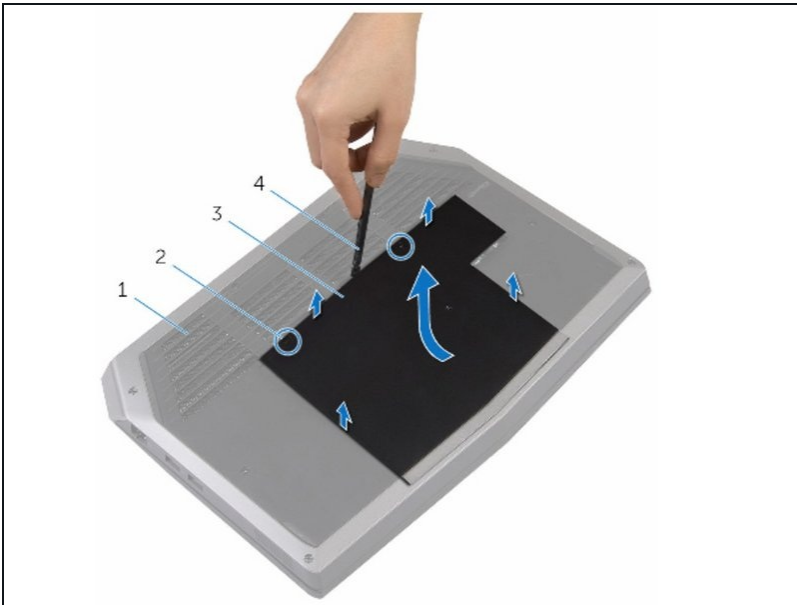
INTRODUCTION

In this guide, we will be showing you how to remove and replace the Power-Button Board.

TOOLS:

Pro Tech Toolkit (1)

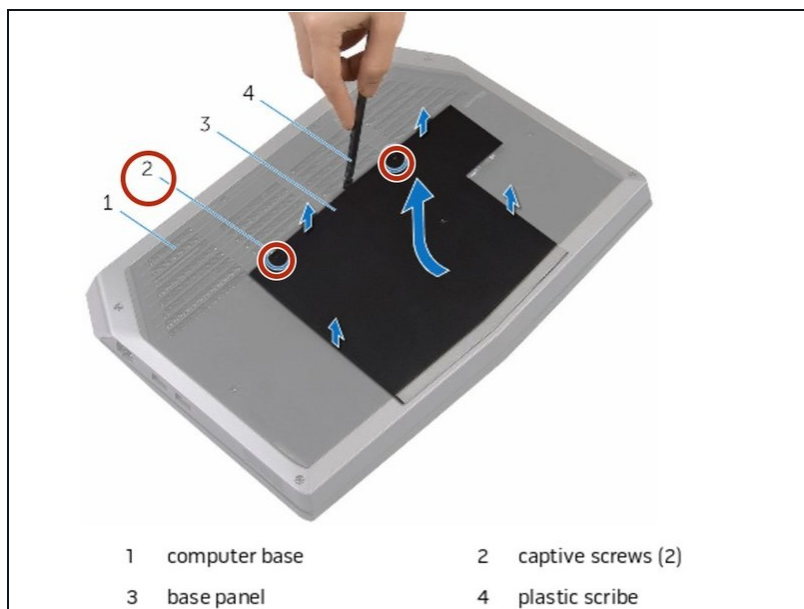
Step 1 — Turning Over the PC



⚠ WARNING: Before working inside your computer, read the safety information that shipped with your computer and follow the steps in [Before Working Inside Your Computer](#) After working inside your computer, follow the instructions in [After Working Inside Your Computer](#) For more safety best practices, see the [regulatory compliance home page](#).

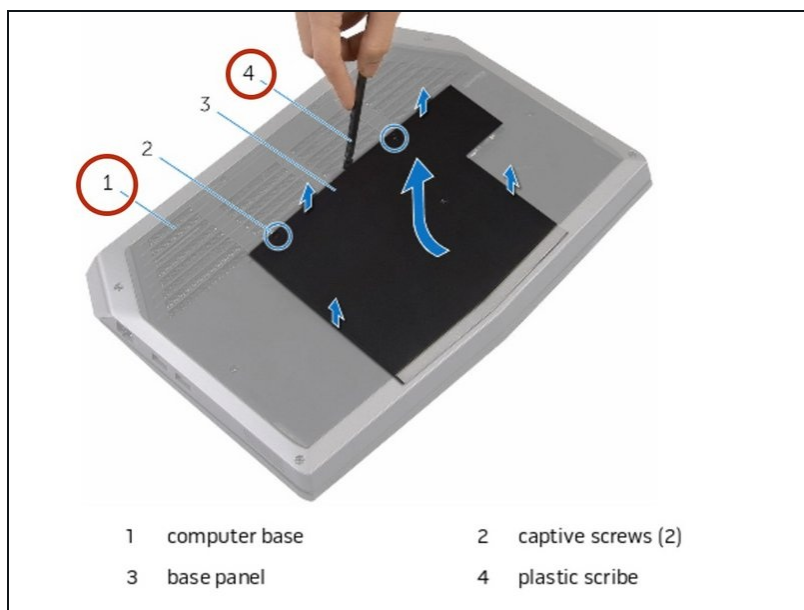
- Close the display and turn the computer over.

Step 2 — Loosen the screws



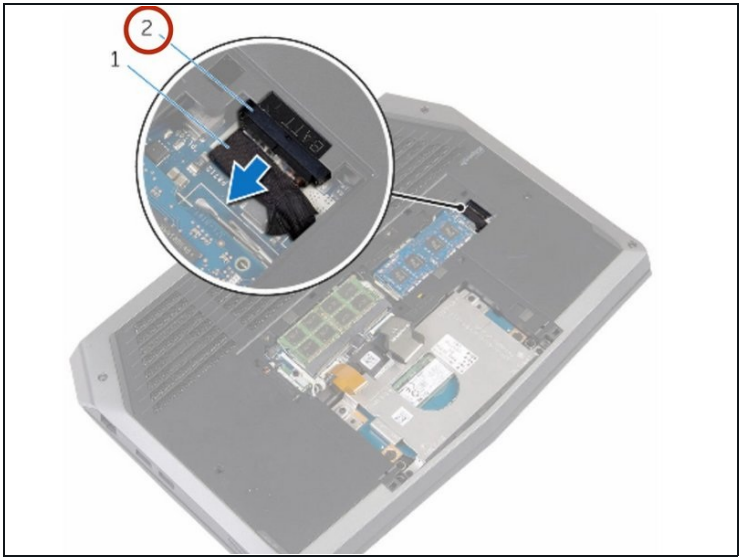
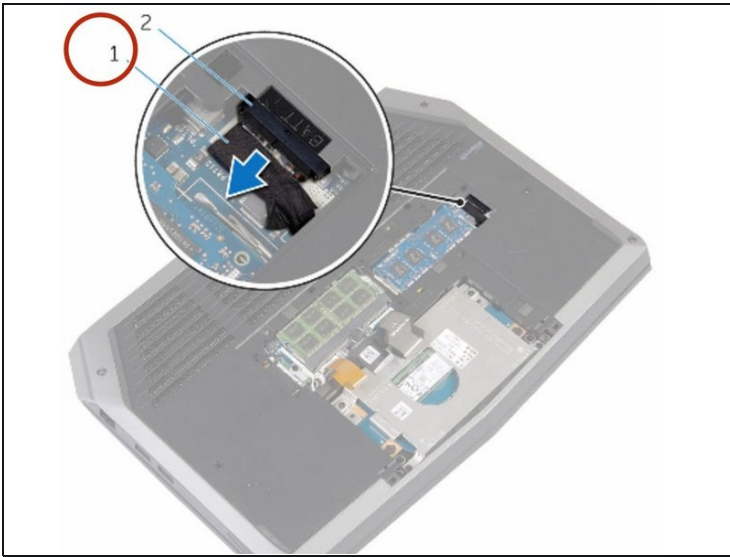
- Loosen the captive screws that secure the base panel to the computer base.

Step 3 — Releasing the Tabs



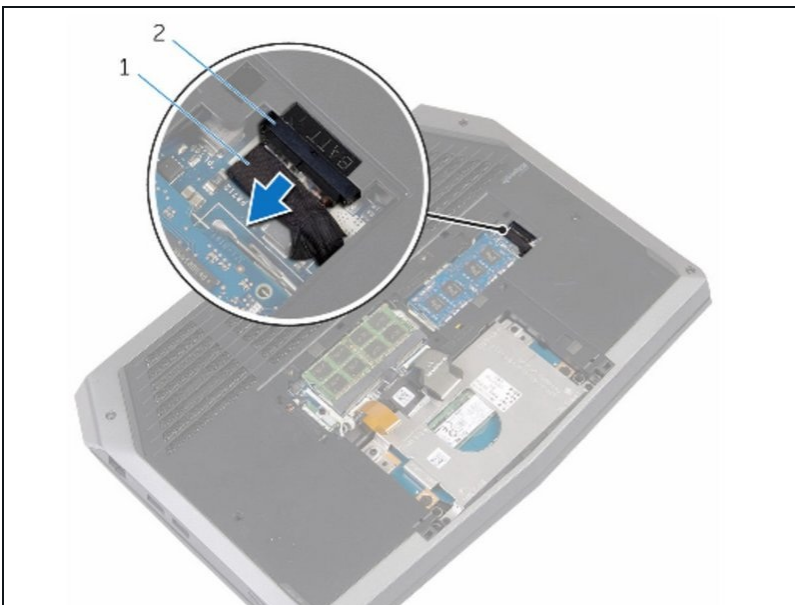
- Using a plastic scribe, gently release the tabs that secure the base panel to the computer base.

Step 4 — Disconnecting the Battery Cable



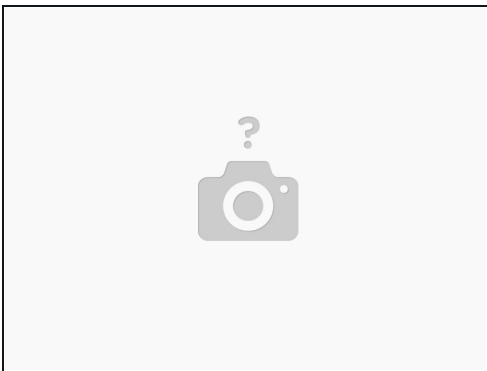
- Disconnect the battery cable from the battery-cable connector.
- Turn the computer over.

Step 5 — Power Button



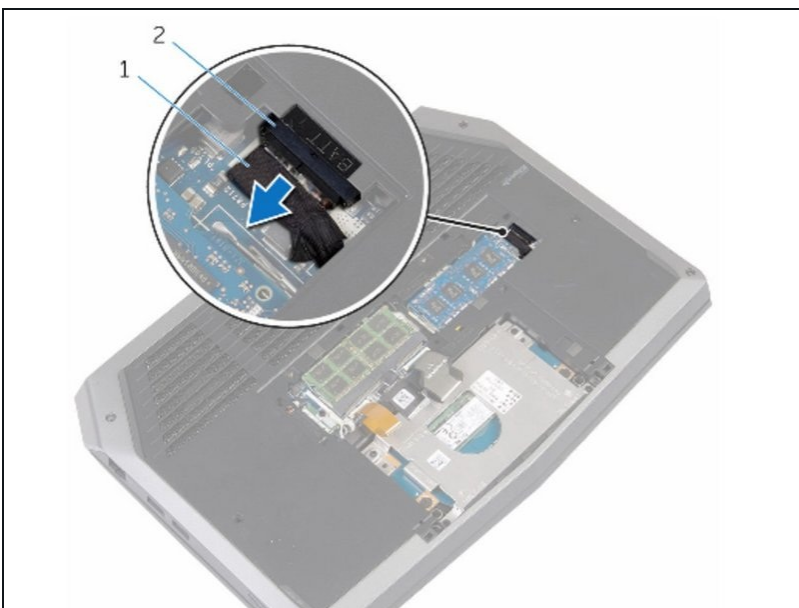
- Press and hold the power button for 5 seconds to ground the system board.

Step 6 — Connect the Battery Cable



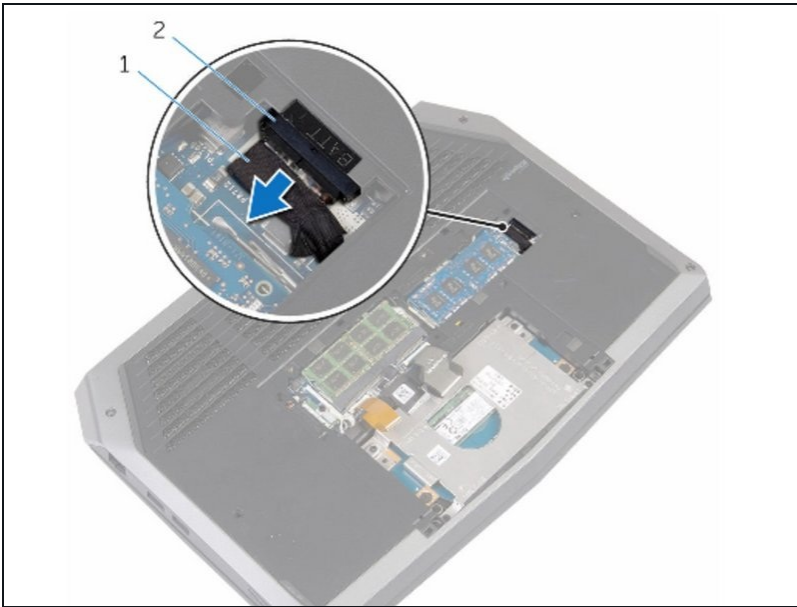
- Connect the battery cable to the battery-cable connector.

Step 7 — Aligning the tabs



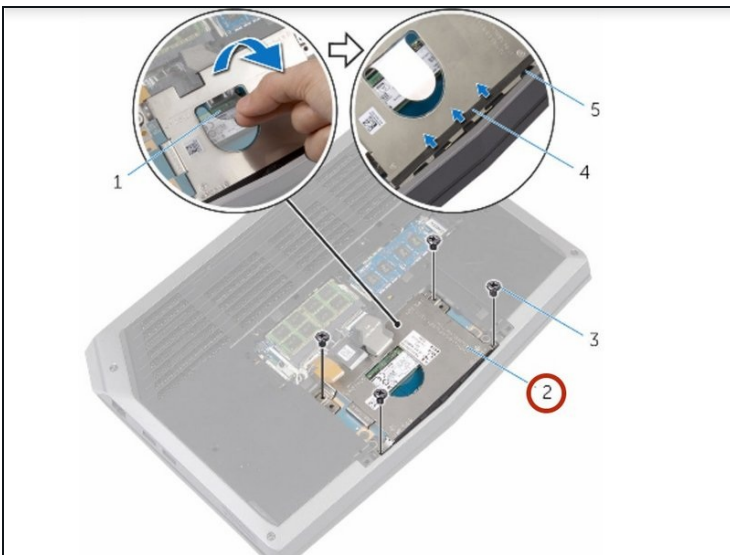
- Align the tabs on the base panel with the slots on the computer base and snap the base panel into place.

Step 8 — Tighten the screws



- Tighten the captive screws that secure the base panel to the computer base.

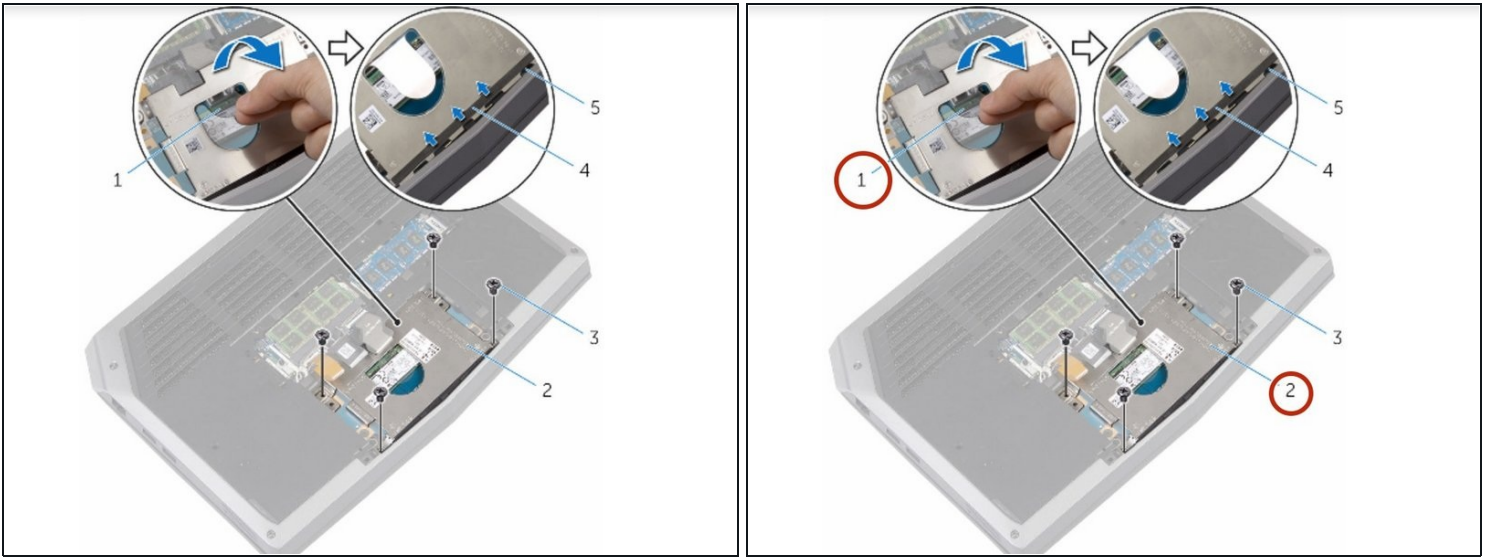
Step 9 — Removing the Screws



⚠ WARNING: Before working inside your computer, read the safety information that shipped with your computer and follow the steps in [Before Working Inside Your Computer](#). After working inside your computer, follow the instructions in [After Working Inside Your Computer](#).

- Remove the screws that secure the solid-state drive bracket to the solid-state drive assembly.

Step 10 — Peel off Computer Base Tabs



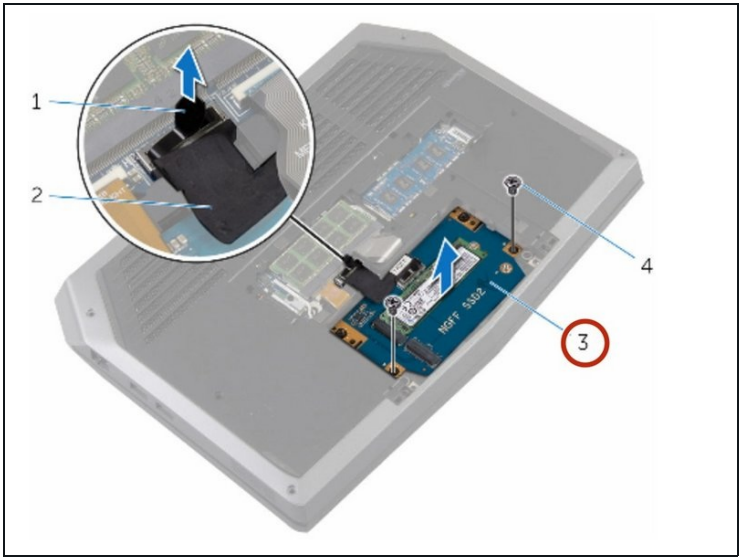
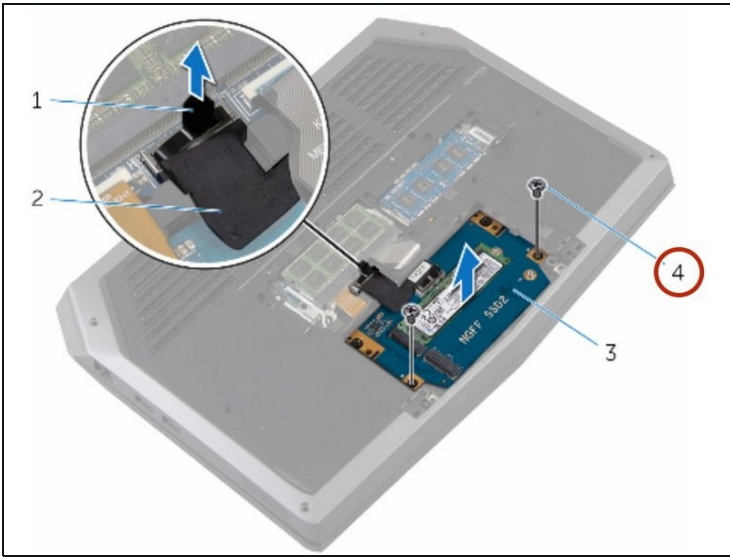
- Using the pull tab, pivot the solid-state drive bracket and peel off the bracket from the tabs on the computer base.

Step 11 — Disconnecting the Solid-State Drive Cable



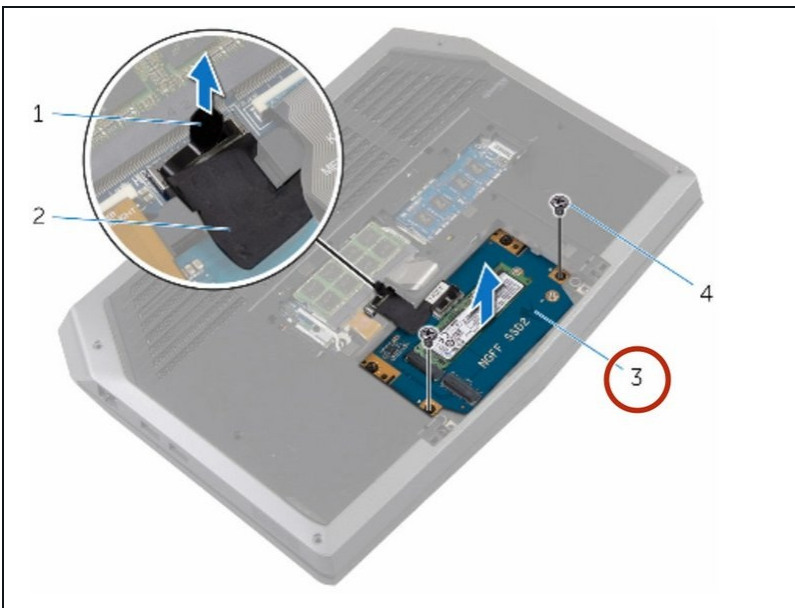
- Using the pull tab, disconnect the solid-state drive cable from the system board.

Step 12 — Removing the Solid-State Drive



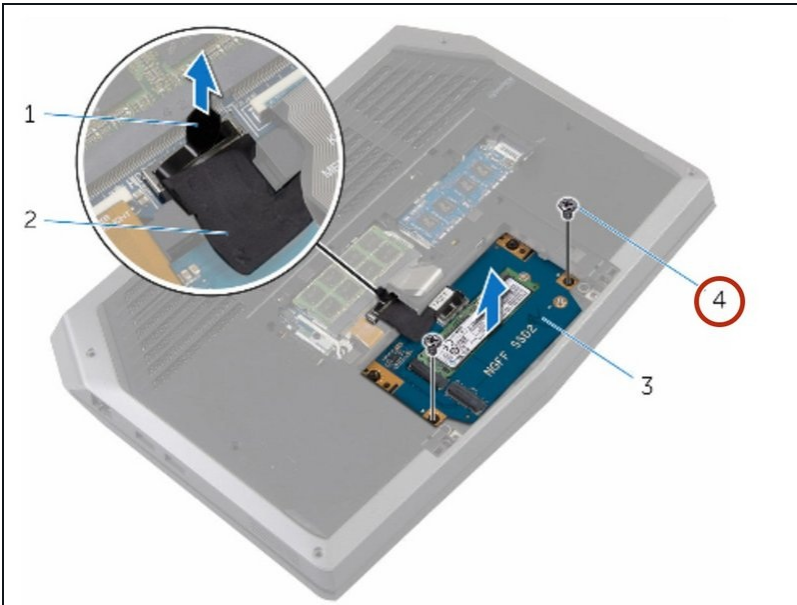
- Remove the screws that secure the solid-state drive assembly to the computer base.

Step 13 — Lifting the Solid-State Assembly



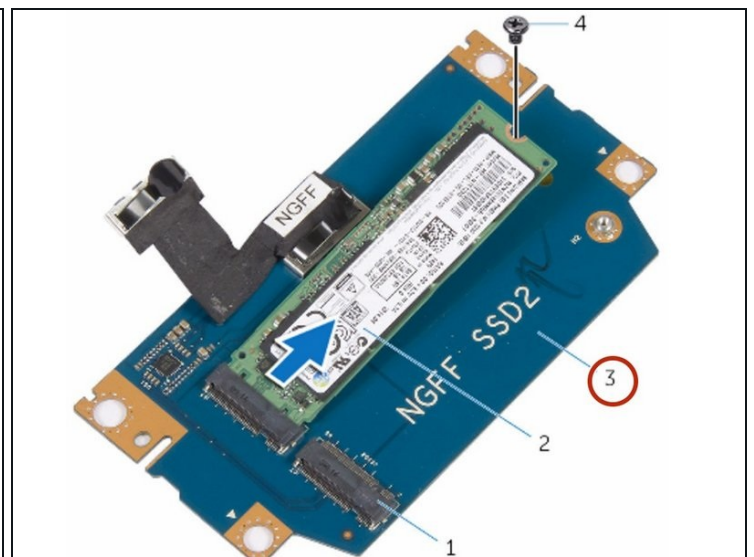
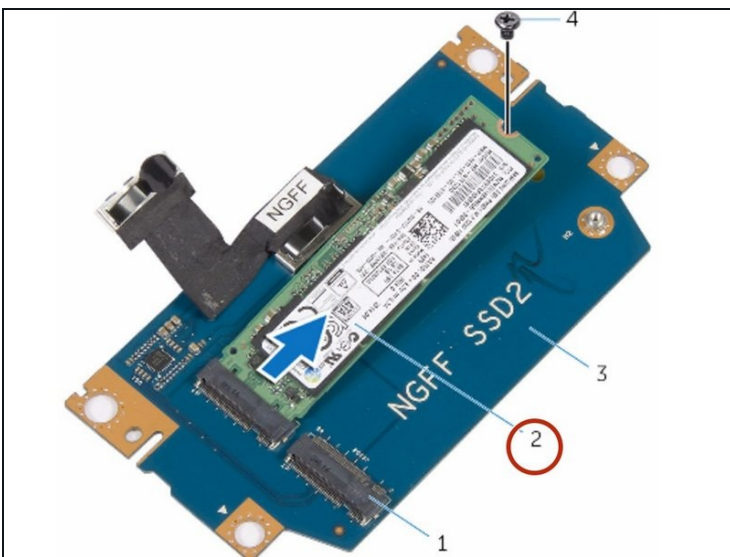
- Lift the solid-state drive assembly off the computer base.

Step 14 — Remove the Screw



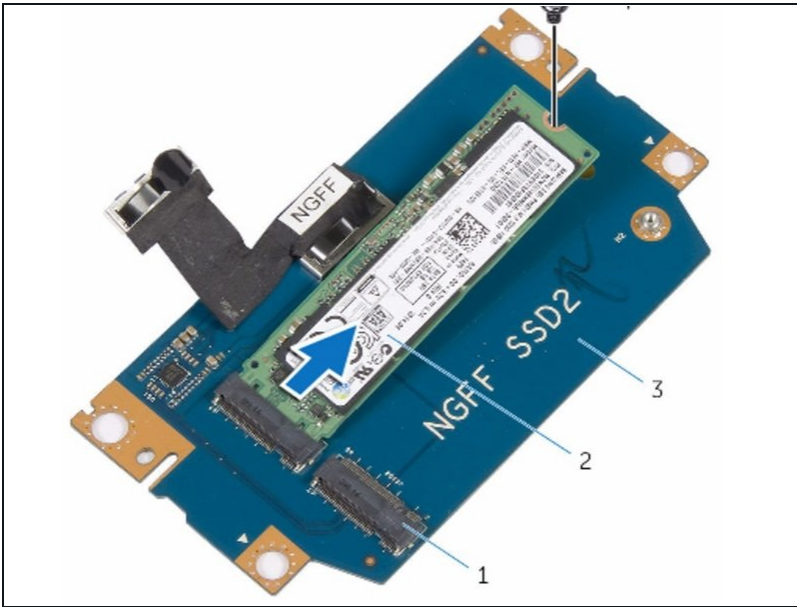
- Remove the screw that secures the solid-state drive to the solid-state drive assembly.

Step 15 — Lift the Solid-State Assembly.



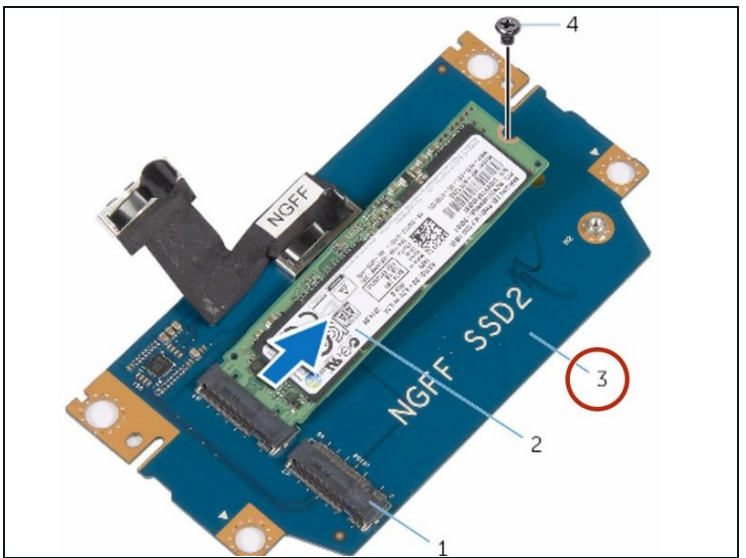
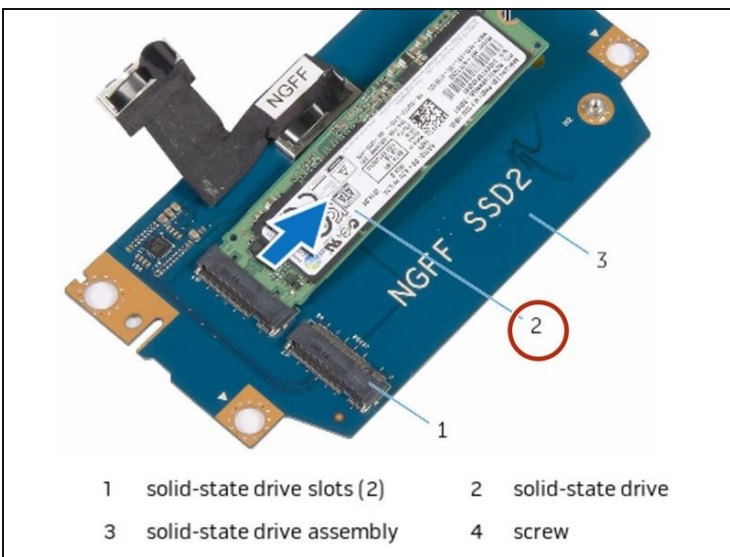
- Slide and lift the solid-state drive off the solid-state drive assembly.

Step 16 — The New Solid-State Drive



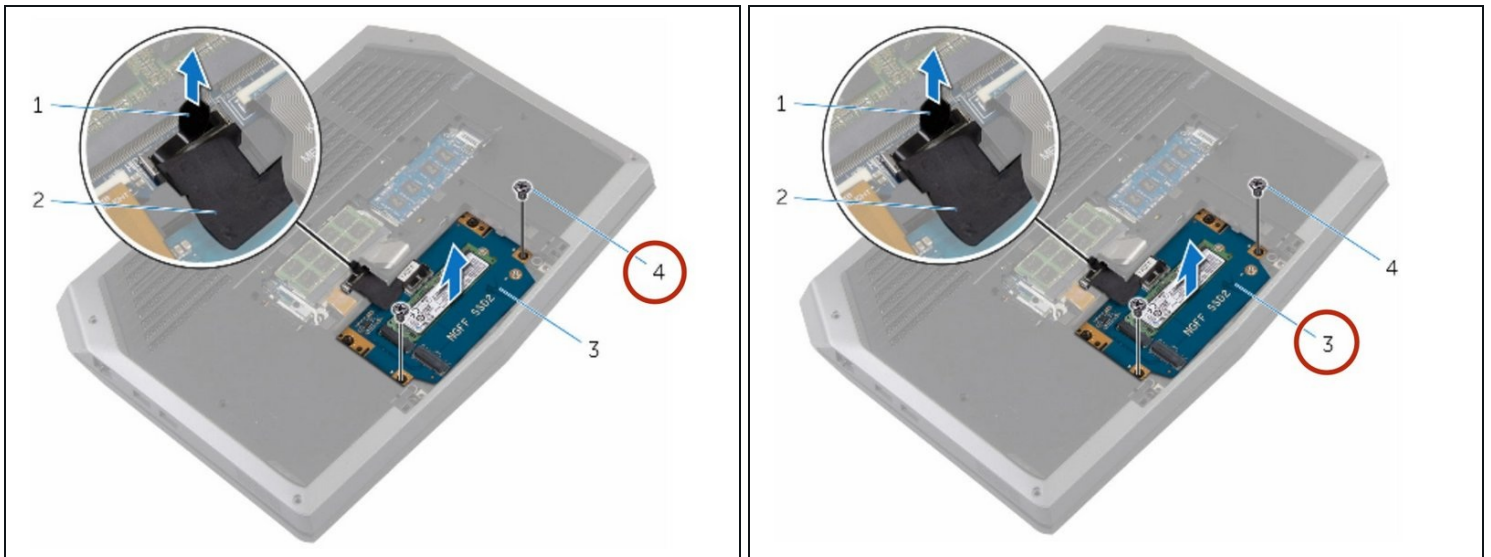
- Slide the **NEW** solid-state drive into the slot on the solid-state drive assembly.

Step 17 — Screw Replacement



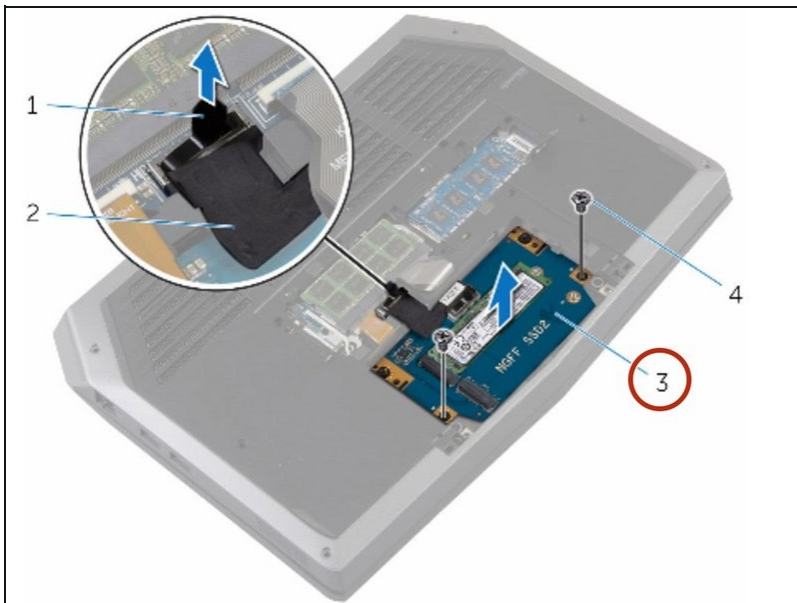
- Replace the screw that secures the solid-state drive to the solid-state drive assembly.

Step 18 — Align the Screws



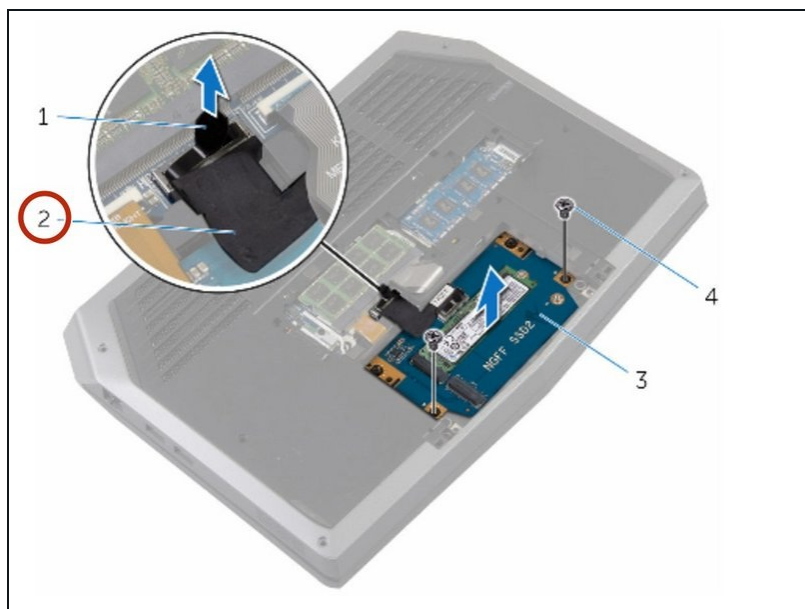
- Align the screw holes on the solid-state drive assembly with the screw holes on the computer base.

Step 19 — Replace the Screws



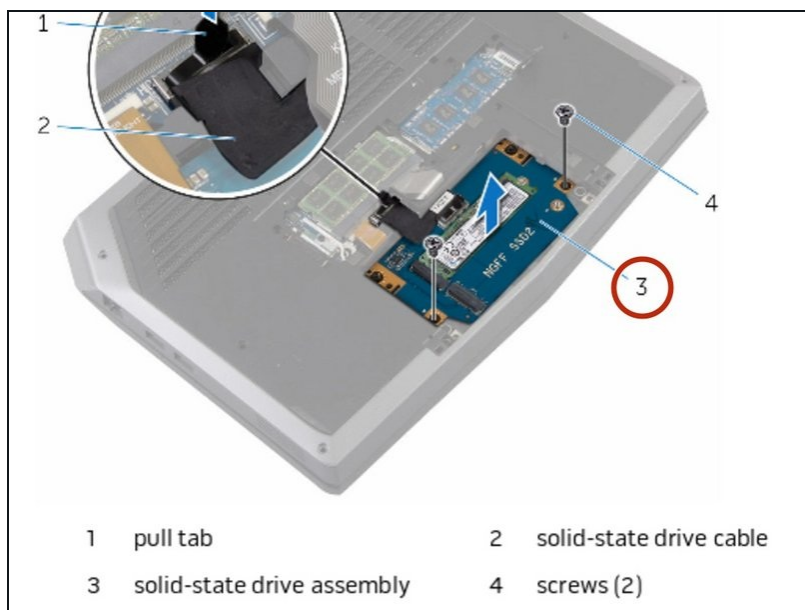
- Replace the screws that secure the solid-state drive assembly to the computer base.

Step 20 — Connect the Cable to the System Board



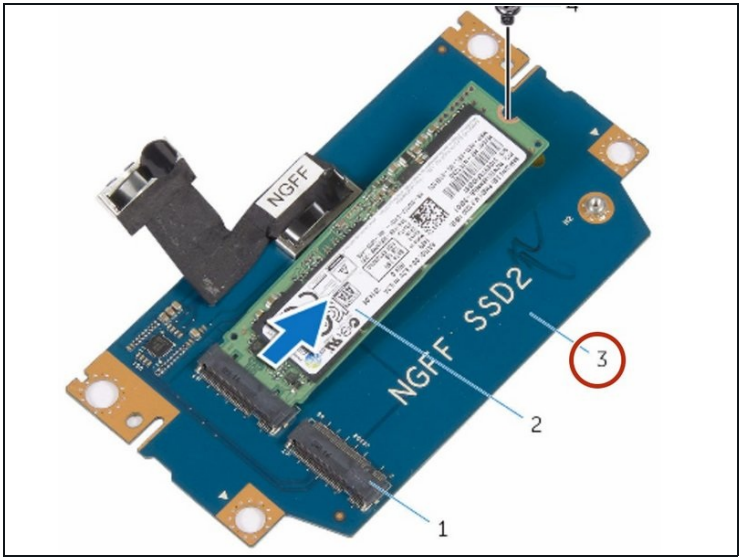
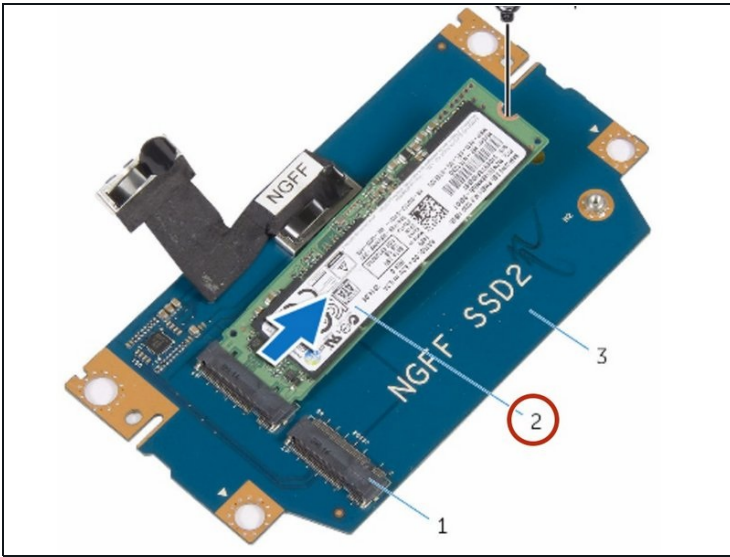
- Connect the solid-state drive cable to the system board.

Step 21 — Align the Screw Holes



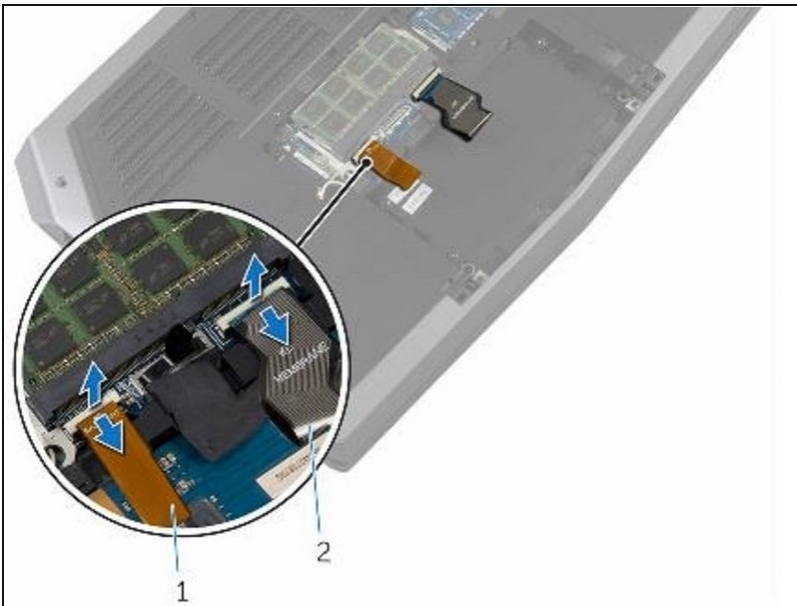
- Align the screw holes on the solid-state drive bracket with the screw holes on the solid-state drive assembly.

Step 22 — Replace the Screws



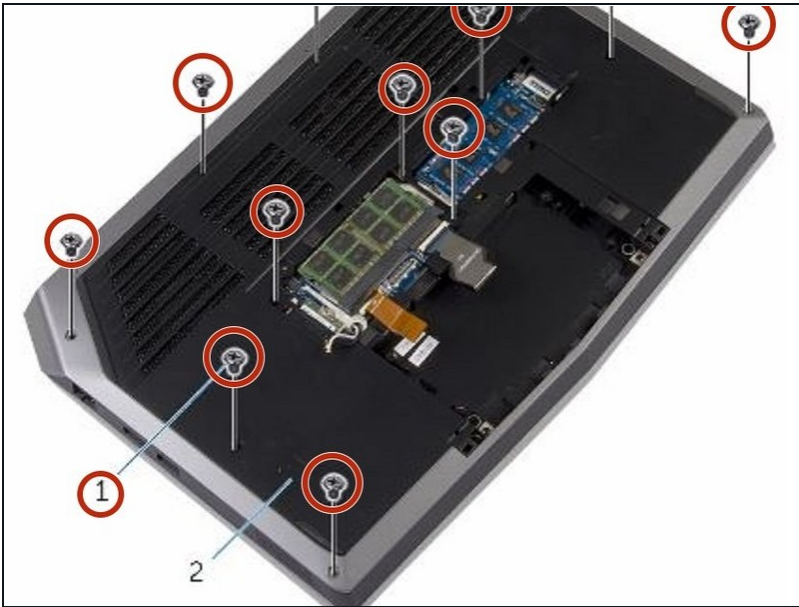
- Replace the screws that secure the solid-state drive bracket to the solid-state drive assembly.

Step 23 — Lifting the Latches



- Lift the latches and disconnect the keyboard and keyboard-backlight cables from the system board.

Step 24 — Remove the Screws



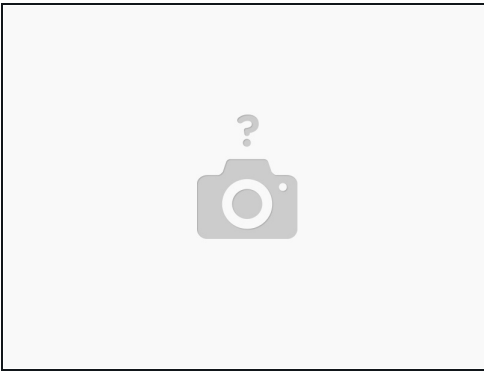
- Remove the screws that secure the palm-rest assembly to the computer base.

Step 25 — Lift the Computer Base



- Lift the computer base slightly and push the release tabs on the palm-rest assembly until it pops out.

Step 26 — Turning the Computer Over



- Turn the computer over and open the display as far as possible.

Step 27 — Prying the Palm-Rest Assembly



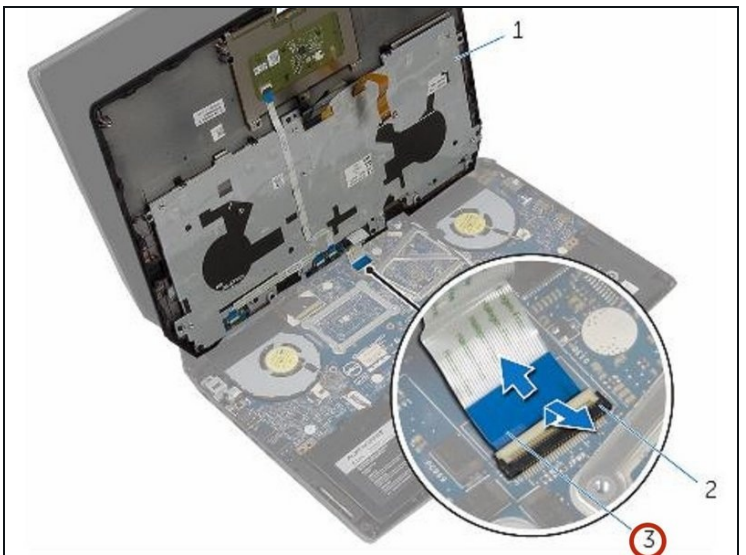
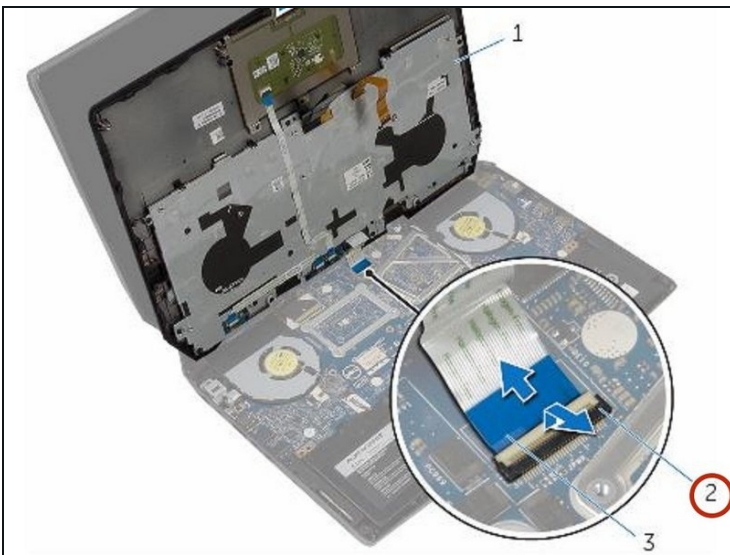
- Using a plastic scribe, pry up along the edges of the palm-rest assembly.

Step 28 — Lift the Palm-Rest Assembly



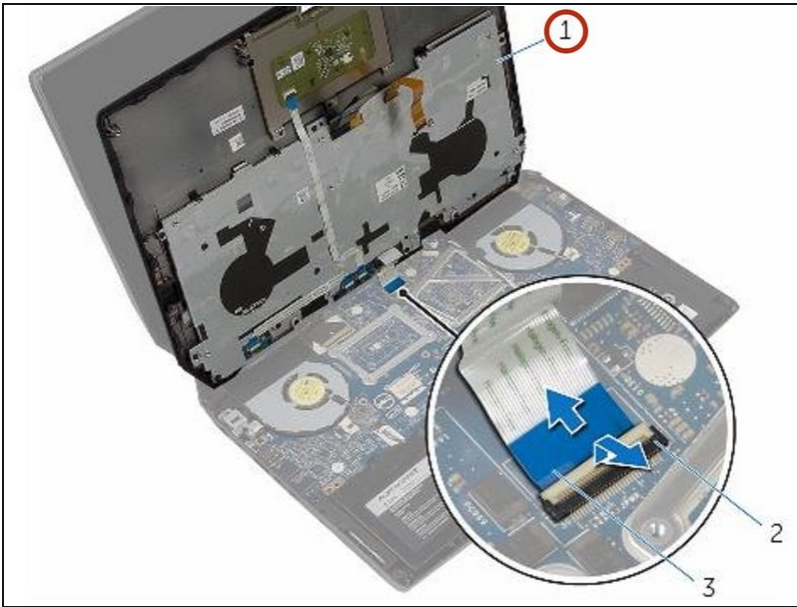
- Gently lift the palm-rest assembly and turn it over.

Step 29 — Lift the Connector Latch



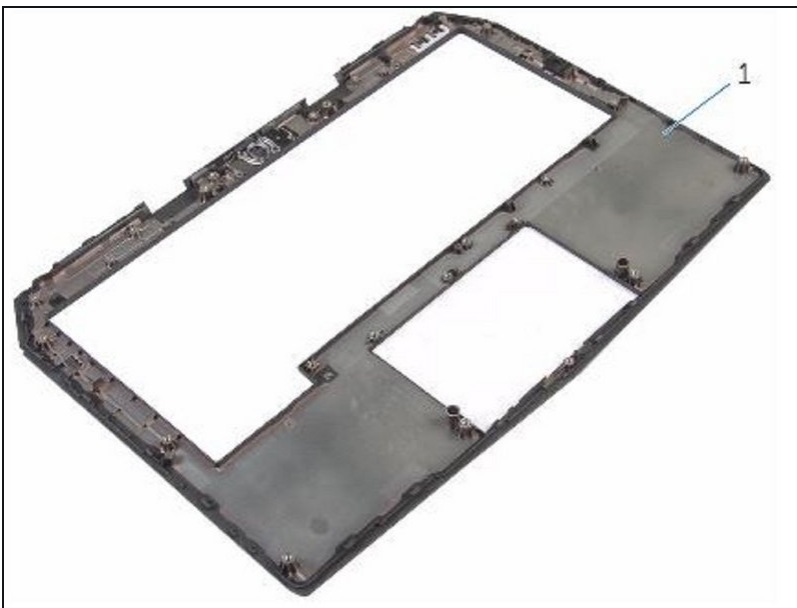
- Lift the connector latch and disconnect the power-button board cable from the system board.

Step 30 — Lift the Palm-Rest Assembly



- Lift the palm-rest assembly off the computer base.

Step 31 — Removing



- Remove the keyboard.
- Remove the power-button board.
- Remove the status-light board.
- Remove the Touchpad.

Step 32 — Replacement



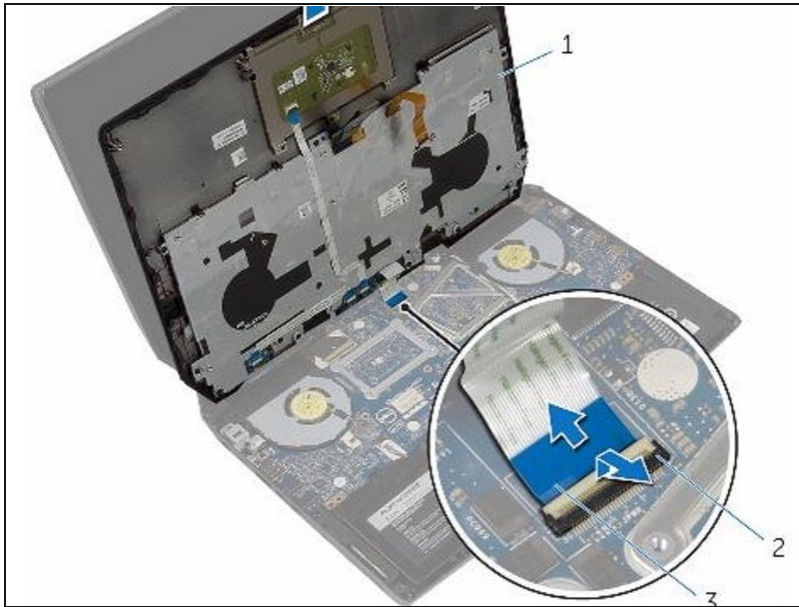
- Replace the touchpad.
- Replace the status-light board.
- Replace the power-button board.
- Replace the keyboard.

Step 33 — Connecting the Power-Button Board Cable



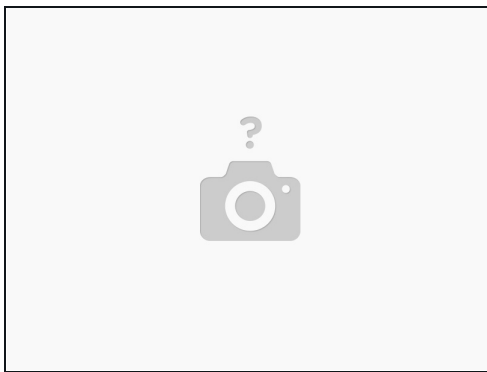
- Connect the power-button board cable to the system board.

Step 34 — Align the Palm-Rest Assembly



- Align the palm-rest assembly on the computer base and snap it into place.

Step 35 — Close the Display



- Close the display and turn the computer over.

Step 36 — Replace the Screws



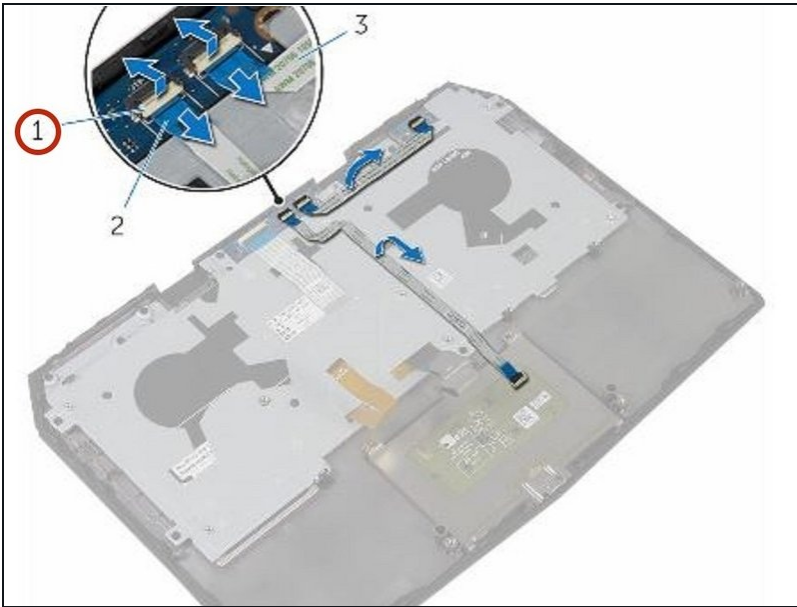
- Replace the screws that secure the palm-rest assembly to the computer base.

Step 37 — Connect the Keyboard Cable



- Connect the keyboard cable and the keyboard-backlight cable to the system board.

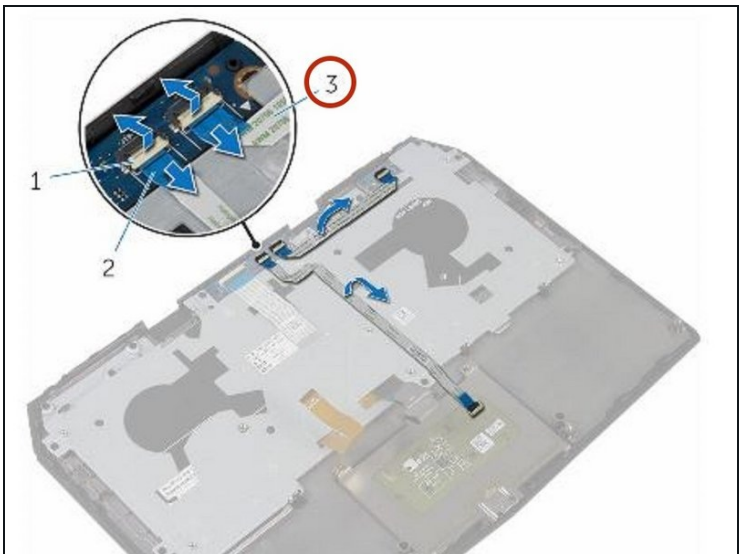
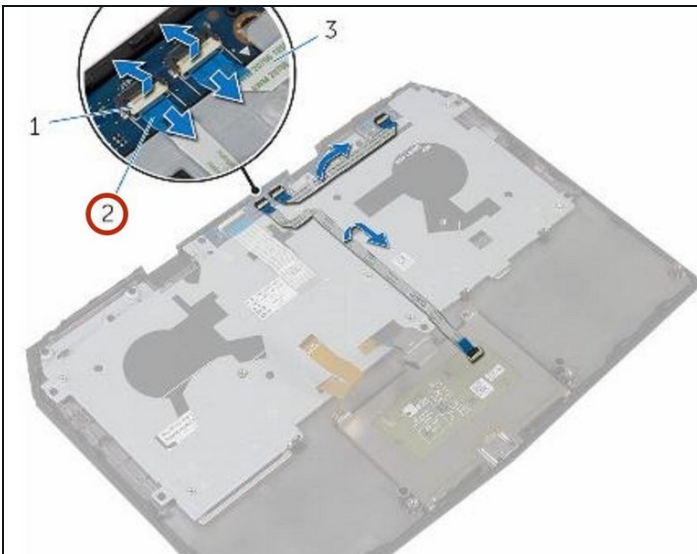
Step 38 — Lift the Connector Latches



⚠ WARNING: Before working inside your computer, read the safety information that shipped with your computer and follow the steps in [Before Working Inside Your Computer](#). After working inside your computer, follow the instructions in [After Working Inside Your Computer](#).

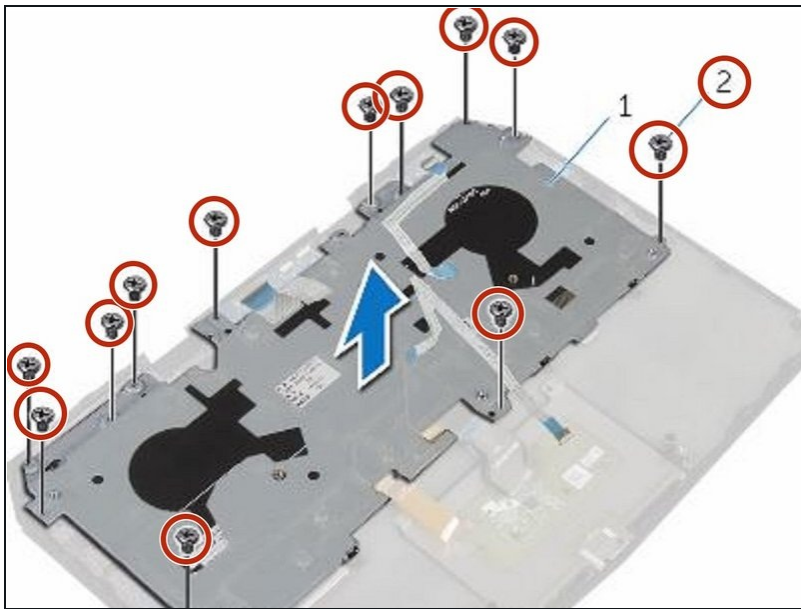
- Lift the connector latches and disconnect the touchpad cable and the status-light cable from the power-button board.

Step 39 — Peel the Touchpad Cable



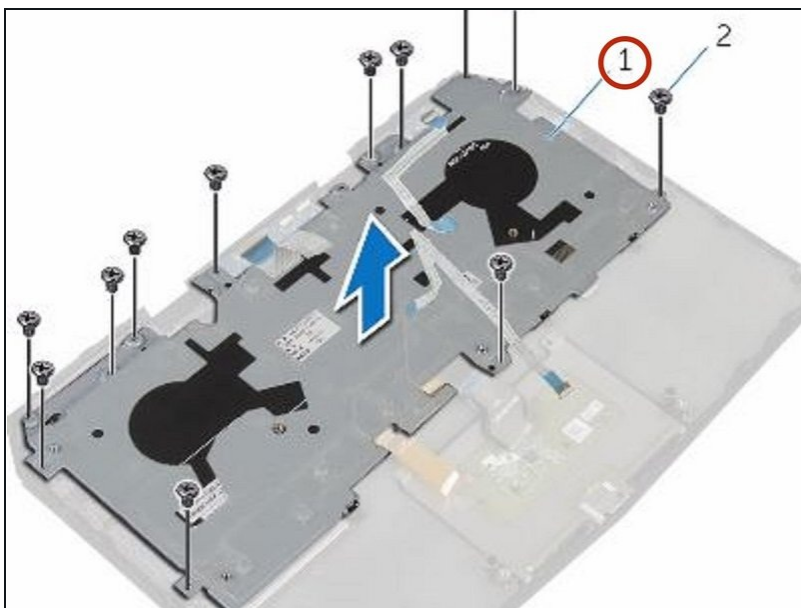
- Peel the touchpad cable and status-light cable off the keyboard bracket.

Step 40 — Remove the Screws



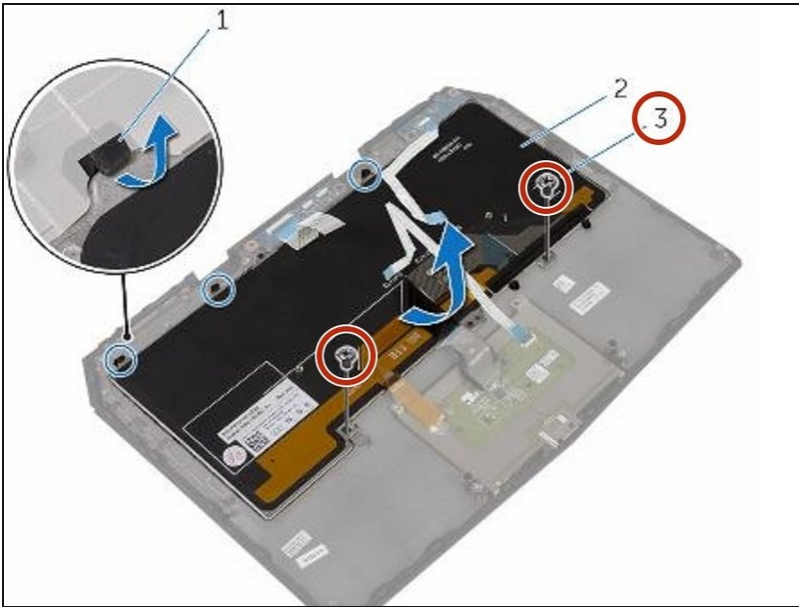
- Remove the screws that secure the keyboard bracket to the palm-rest assembly.

Step 41 — Lifting the Keyboard Bracket



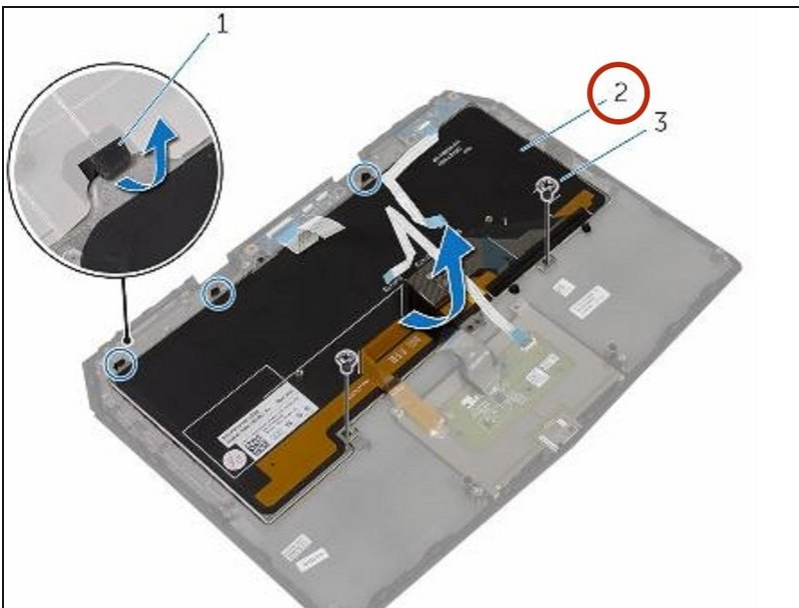
- Lift the keyboard bracket off the palm-rest assembly.

Step 42 — Remove the Screws



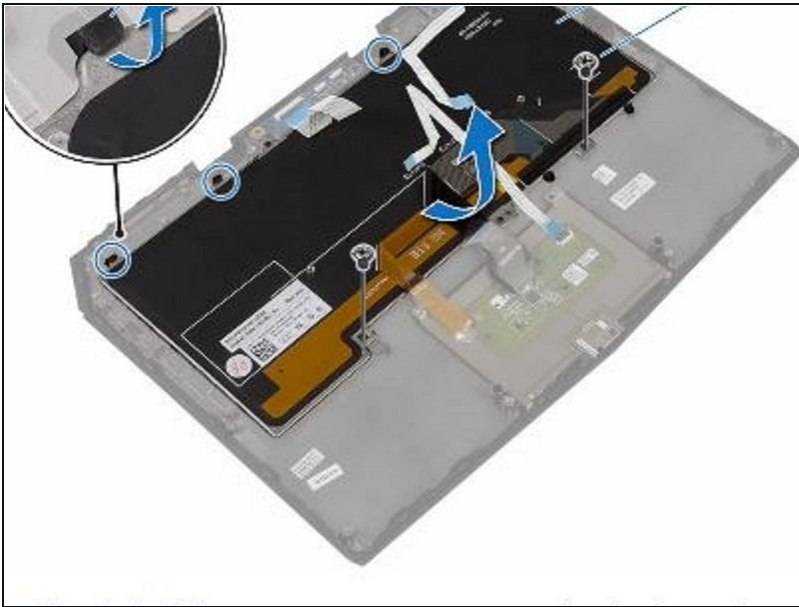
- Remove the screws that secure the keyboard to the palm-rest assembly.

Step 43 — Slide and Lift the Keyboard



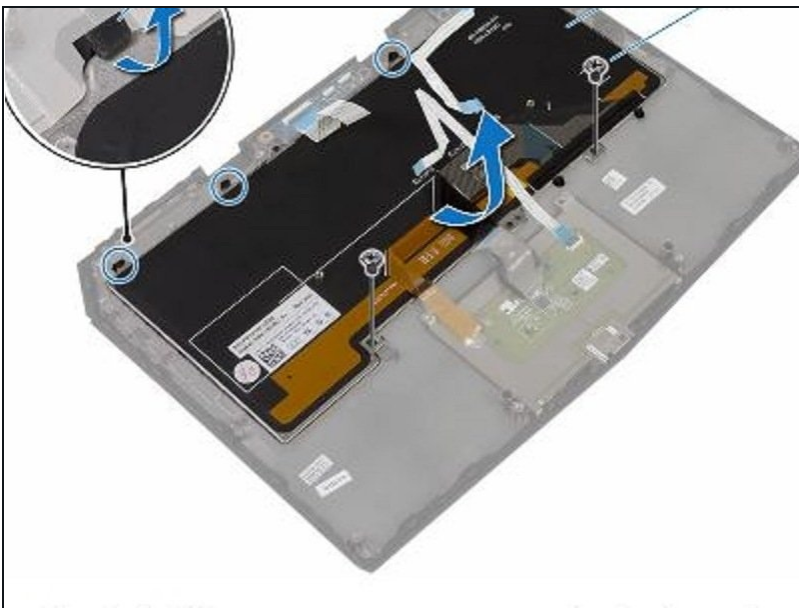
- Slide and lift the keyboard, along with the cables, off the palm-rest assembly.

Step 44 — Align the Screw Holes



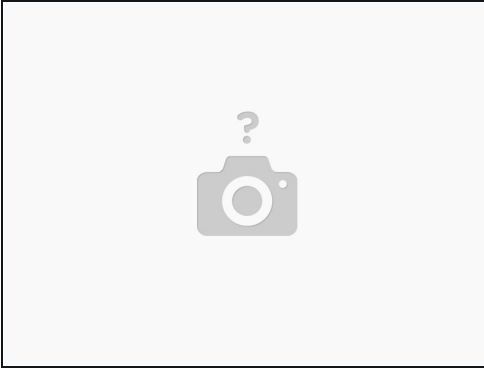
- Align the screw holes on the **NEW** keyboard with the screw holes on the palm-rest assembly.

Step 45 — Replace the Screws



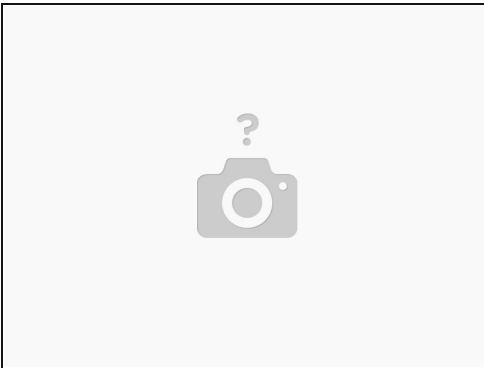
- Replace the screws that secure the keyboard to the palm-rest assembly.

Step 46 — Align the Screw Holes



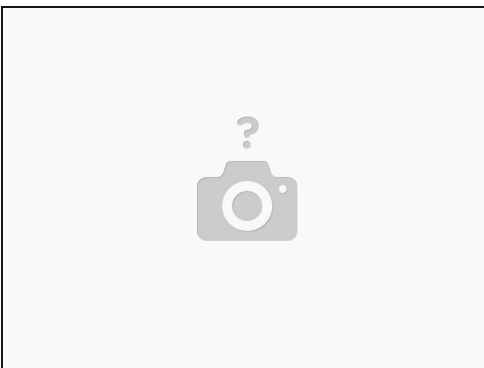
- Align the screw holes on the keyboard bracket with the screw holes on the palm-rest assembly.

Step 47 — Replace the Screws



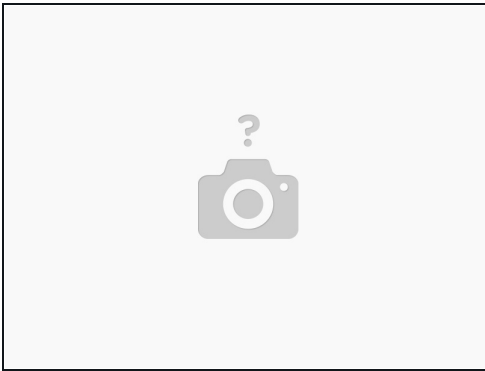
- Replace the screws that secure the keyboard bracket to the palm-rest assembly.

Step 48 — Adhere the Touchpad Cable



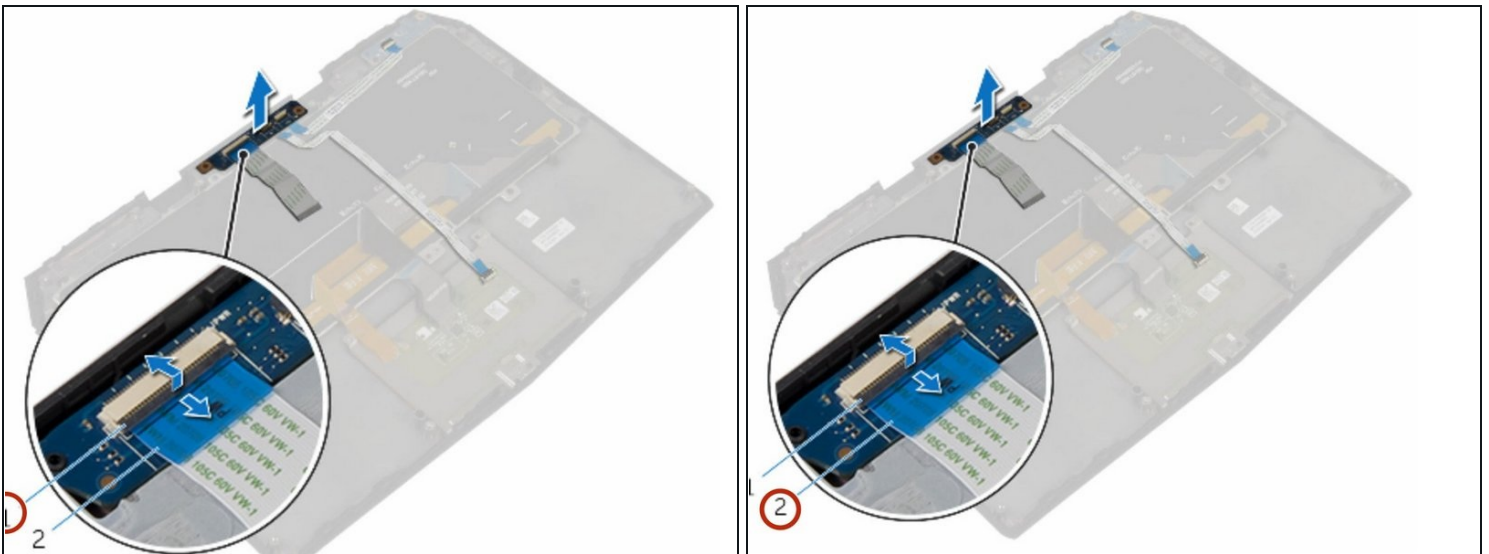
- Adhere the touchpad cable and status-light cable to the keyboard bracket.

Step 49 — Slide the Cable



- Slide the touchpad cable and the status-light cable into their respective connectors on the power-button board and press down the latches to secure the cables.

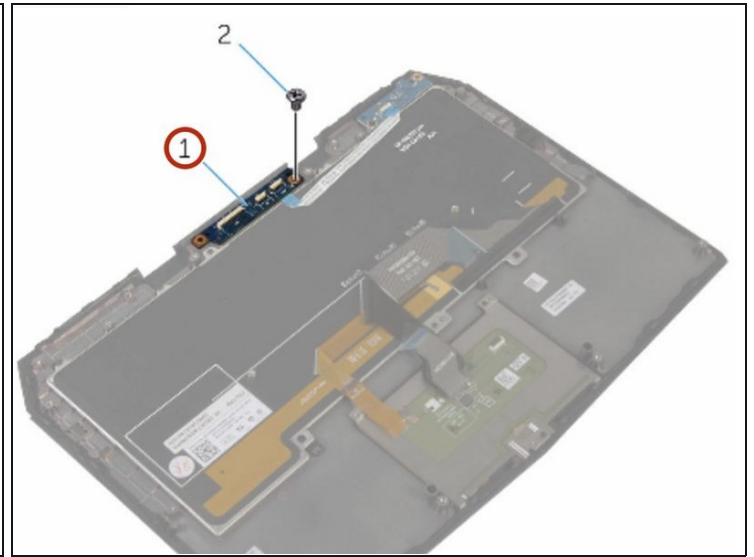
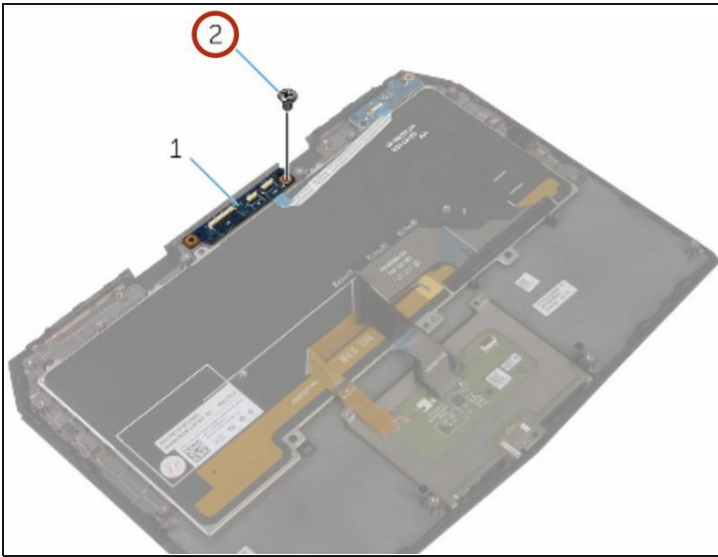
Step 50 — Disconnecting the Power-Button Board Cable



⚠ WARNING: Before working inside your computer, read the safety information that shipped with your computer and follow the steps in [Before Working Inside Your Computer](#). After working inside your computer, follow the instructions in [After Working Inside Your Computer](#).

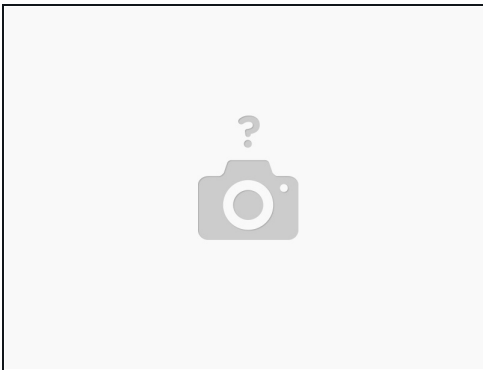
- Lift the connector latch and disconnect the power-button board cable from the power-button board.

Step 51 — Remove the Screw



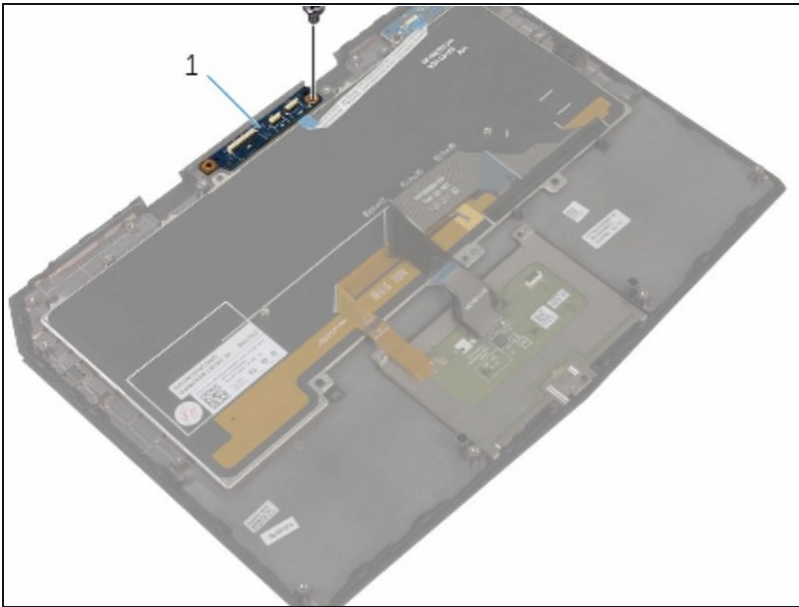
- Remove the screw that secures the power-button board to the palm-rest assembly.

Step 52 — Sliding the Power-Button Board



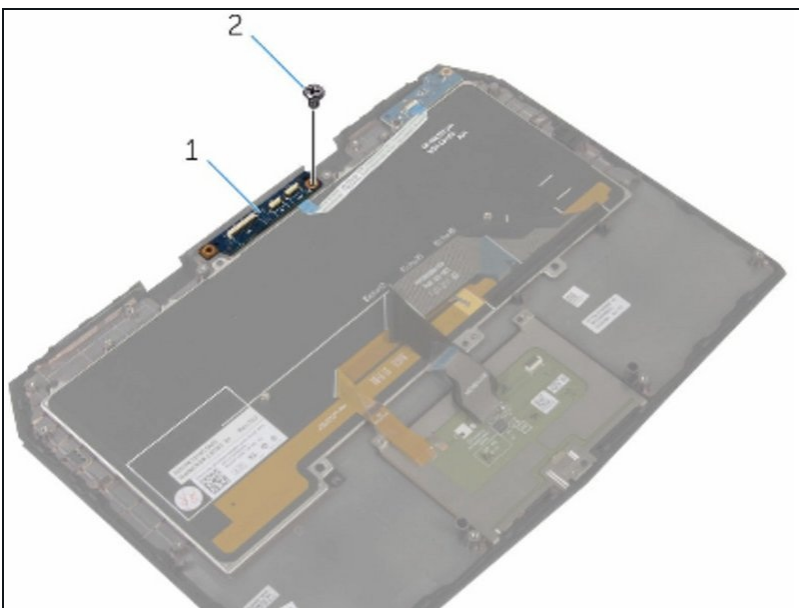
- Slide the power-button board cable into the power-button board connector and press down the latch to secure the cable.

Step 53 — Align the Screw Hole



- Align the screw hole on the **NEW** power-button board with the screw hole on the palm-rest assembly.

Step 54 — Replace the Screw



- Replace the screw that secures the power-button board to the palm-rest assembly.

To reassemble your device, follow these instructions in reverse order.