



Toshiba Satellite P75-A7100 Wi-Fi Adapter Replacement

This guide will help you replace the Wi-Fi adapter in your Toshiba Satellite P75-A7100 laptop.

Written By: Brandon Cole



INTRODUCTION

In this guide you will be replacing the Wi-Fi adapter in your laptop. You'll need to use a Phillips #1 screwdriver to complete this repair.

TOOLS:

- [Phillips #1 Screwdriver](#) (1)
-

Step 1 — Battery



- Slide the tabs apart from each other.

Step 2



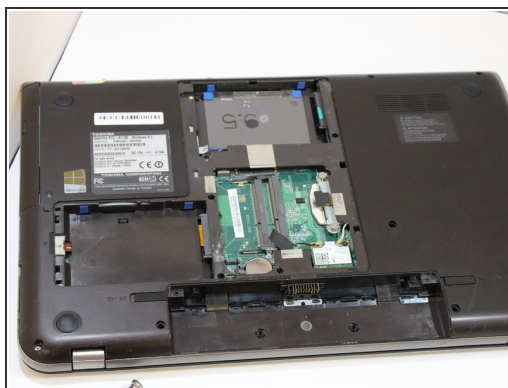
- Lift the battery upwards and remove it from the device.

Step 3 — Wi-Fi Adapter



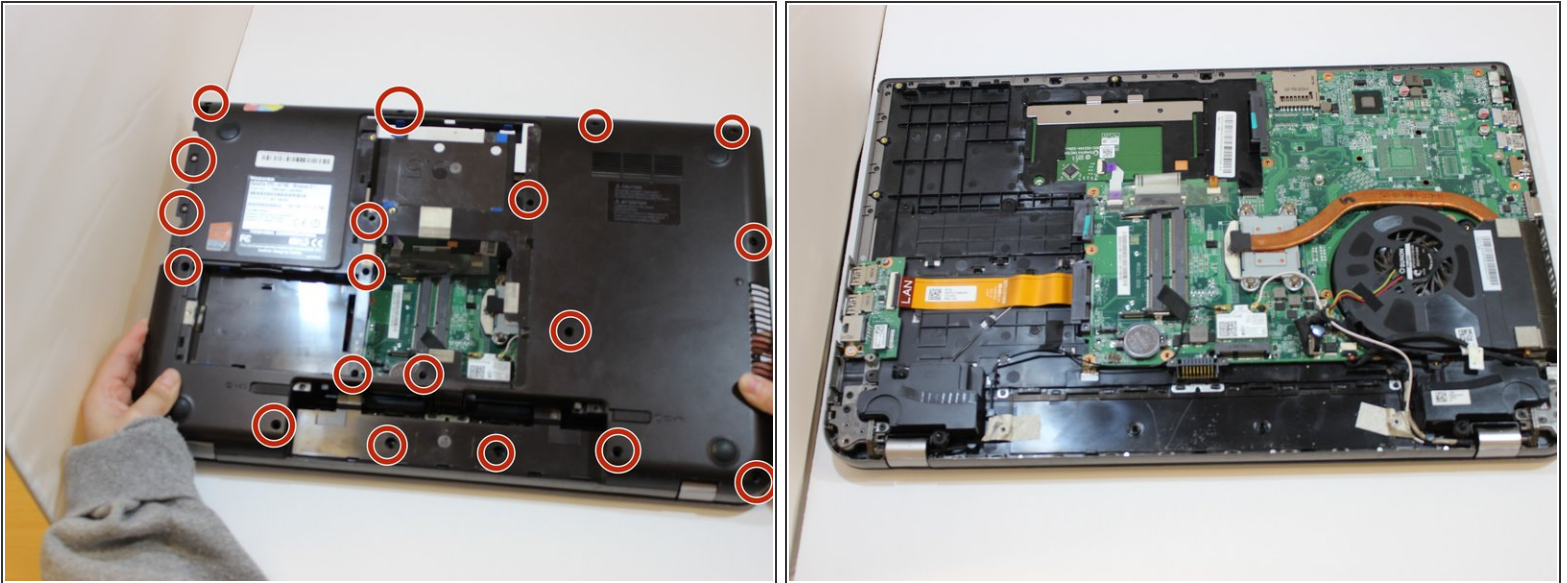
- Using a Phillips #1 screwdriver, remove the screw from the back cover.
- Remove the back cover from the device.

Step 4



- Remove the optical drive from the device.

Step 5



- Using a Phillips #1 screwdriver, unscrew the remaining screws that are visible on the laptop.
- Remove the back cover from your device.

Step 6



- Using a Phillips #1 screwdriver, remove the screw connecting the Wi-Fi adapter to the motherboard.
- Remove the Wi-Fi adapter from the device.

To reassemble your device, follow these instructions in reverse order.