



# Dell Quietkey SK-8000 Keyboard Teardown

This is a complete teardown of the Dell Quietkey SK-8000 Keyboard.

Written By: Ion



---

## INTRODUCTION

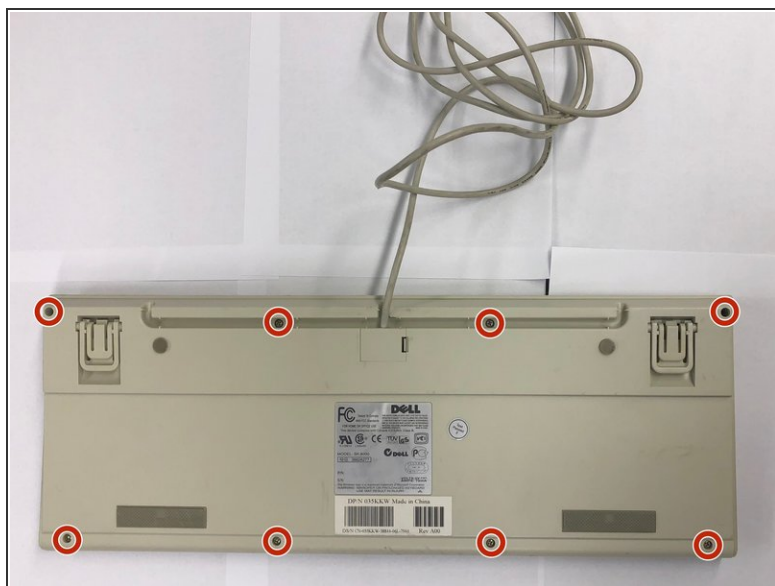
This is a complete teardown of the Dell Quietkey SK-8000 Keyboard.



### TOOLS:

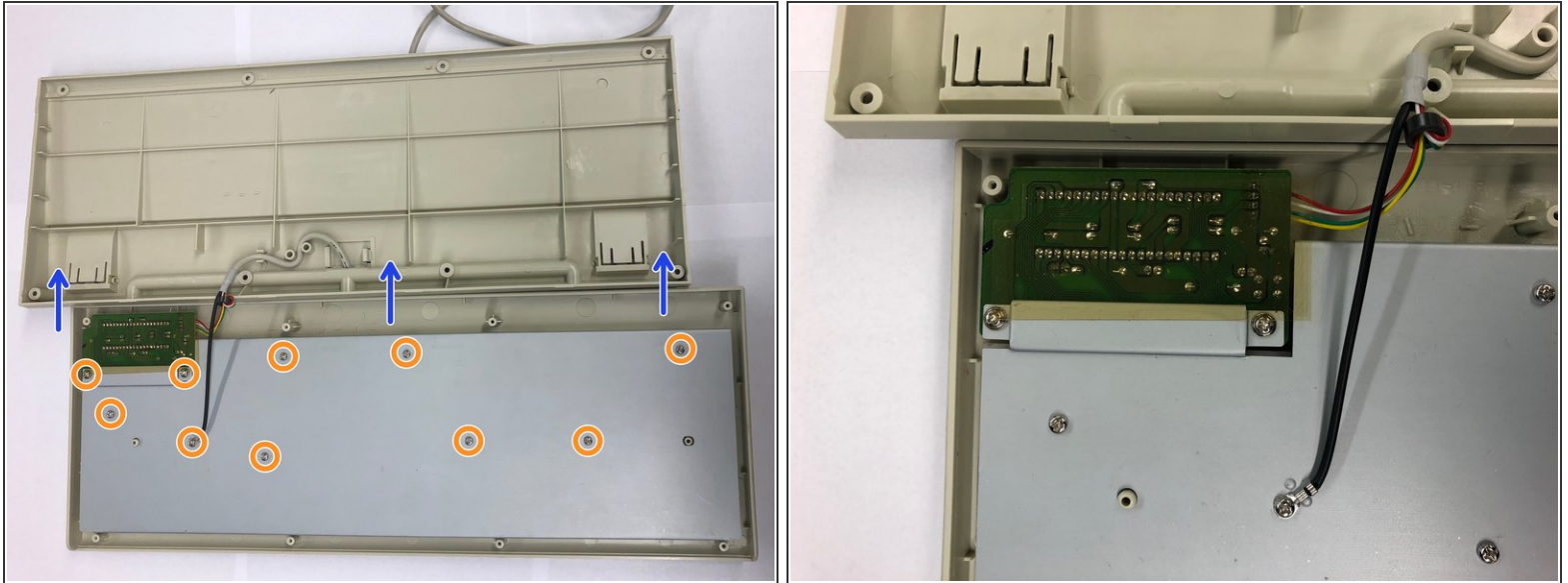
- [Phillips #1 Screwdriver](#) (1)
-

## Step 1 — Remove Back Plastic Body



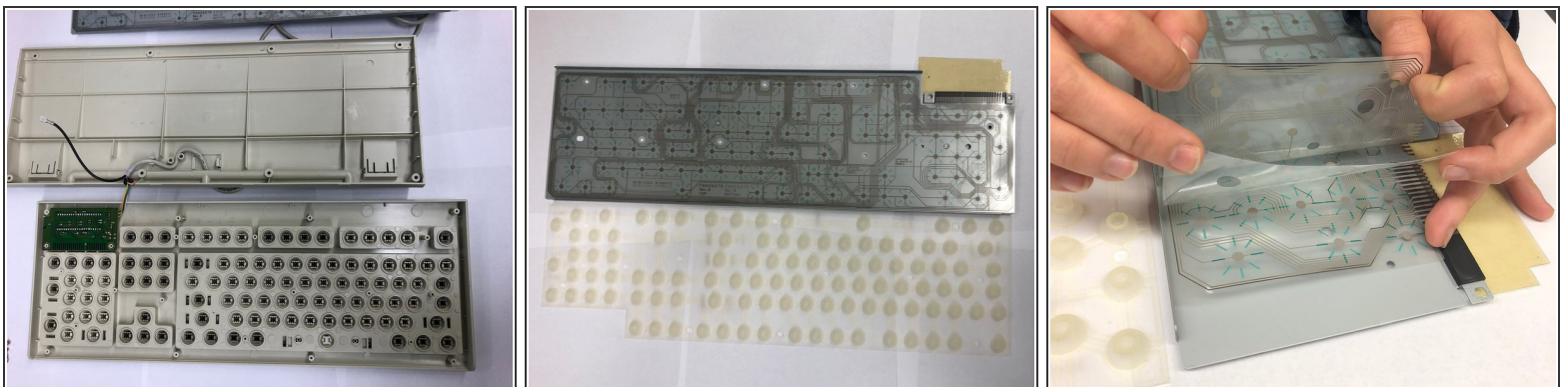
- Flip the keyboard over to expose 8 screws.
- Use a Phillips screwdriver to unscrew and remove each screw.

## Step 2



- Lift the keyboard upward from the bottom.
- ⚠ Do not pull too hard when lifting the base. Be careful not to destroy the wires connecting to the base of the keyboard.
- Use a Phillips screwdriver to remove the remaining ten screws on the aluminum plate.

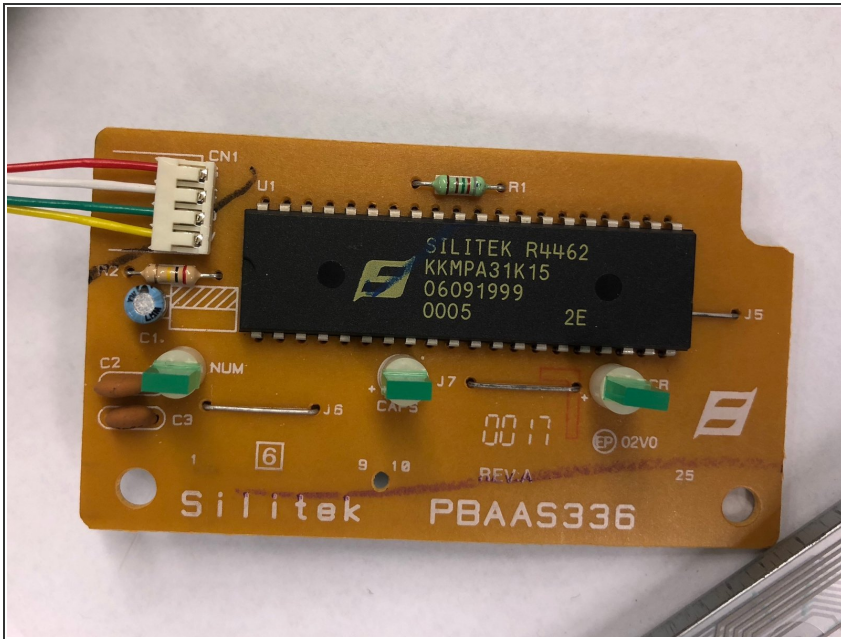
## Step 3 — Completion



- Carefully lift each part out. Each part should lift out very easily after the screws are removed.



## Step 4 — Siltek Chip Reveal



- The keyboard controller is seen to be a Siltek R4462.