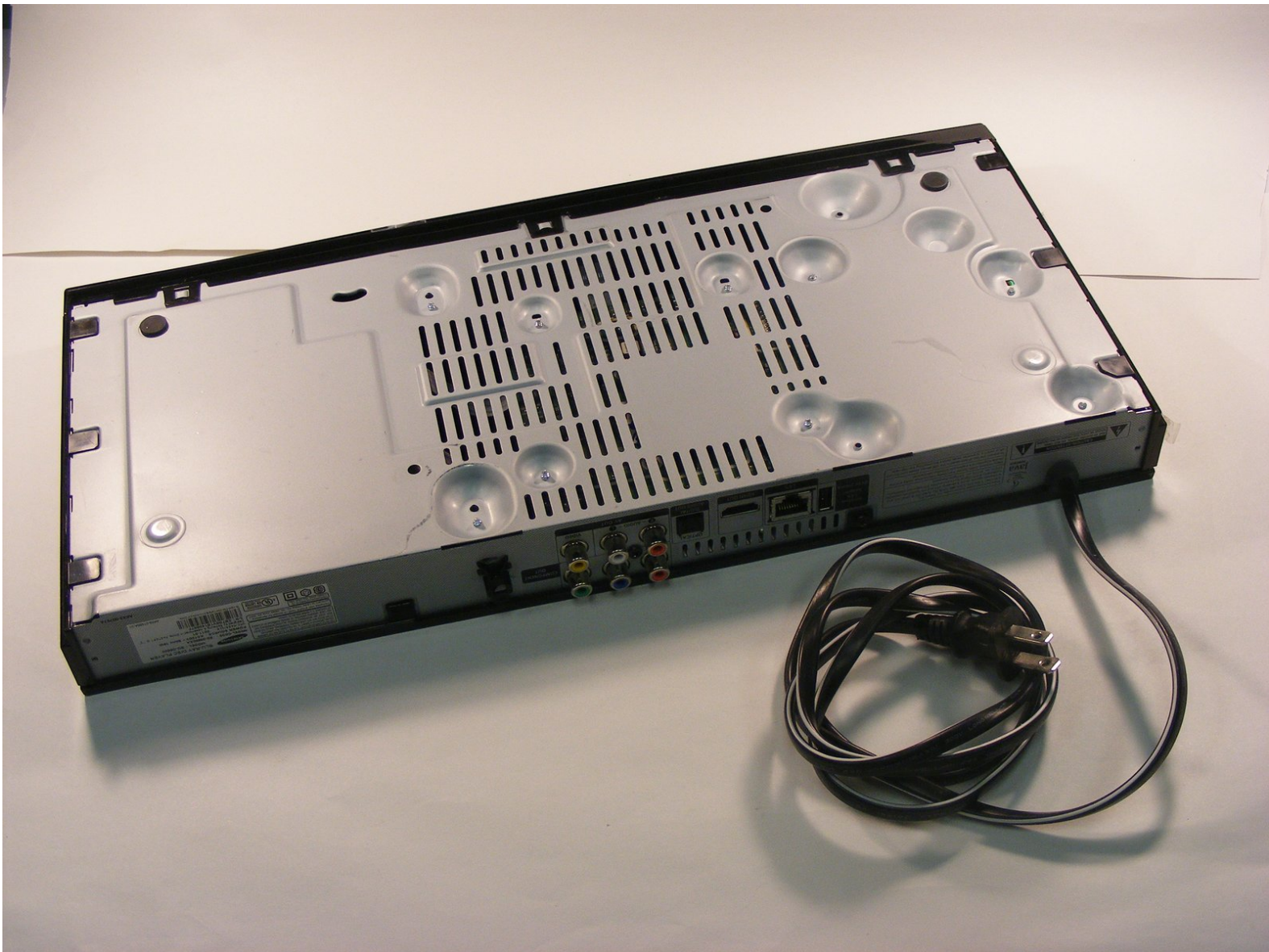




Samsung BD-D5500 Disassembly

This is how you remove the top off of Samsung BD-D5500.

Written By: Kenya Wilson

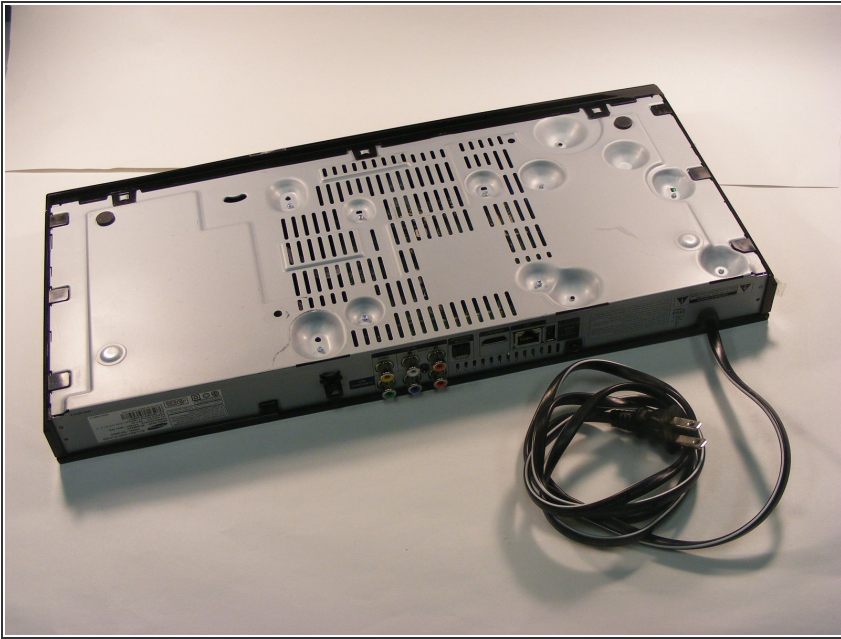




TOOLS:

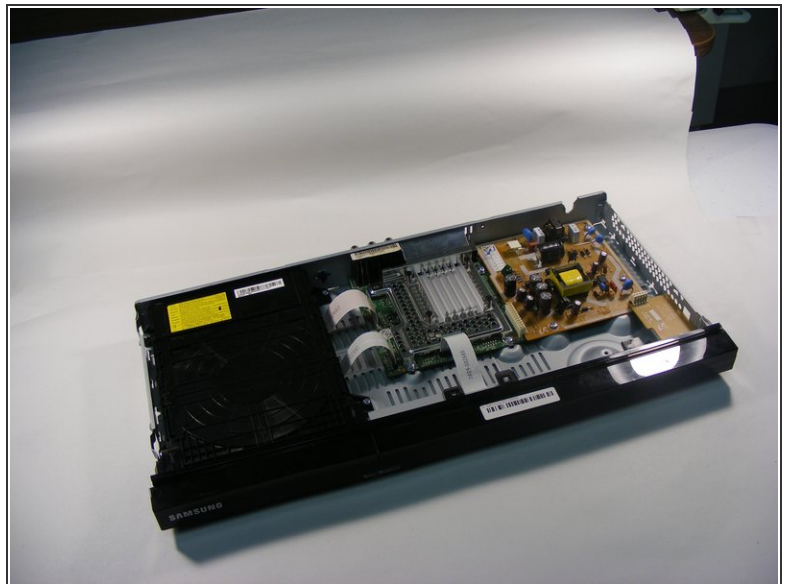
- [iFixit Opening Tool](#) (1)
 - [Spudger](#) (1)
 - [Phillips #2 Screwdriver](#) (1)
-

Step 1 — Samsung BD-D5500 Disassembly



- To begin, turn the device over so that the bottom is facing up. There are 9 black clips that attach the plastic body to the case. Remove these clips from the case.

Step 2



- Use a Phillips #2 screwdriver to remove the screw that attaches the top cover to the rear of the device. This will allow you to remove the cover.

 This is how your device will look after you remove the top.

To reassemble your device, follow these instructions in reverse order.