



Huawei P10 Lite Rear Camera Replacement

Replace the rear camera in your Huawei P10 Lite smartphone.

Written By: Dominik Schnabelrauch



INTRODUCTION

Use this guide to replace the rear camera in your Huawei P10 Lite smartphone. When reassembling your phone apply new adhesive where it is necessary.

TOOLS:

- [iFlex Opening Tool](#) (1)
 - [Tweezers](#) (1)
 - [Phillips #000 Screwdriver](#) (1)
 - [Spudger](#) (1)
-

Step 1 — Back cover



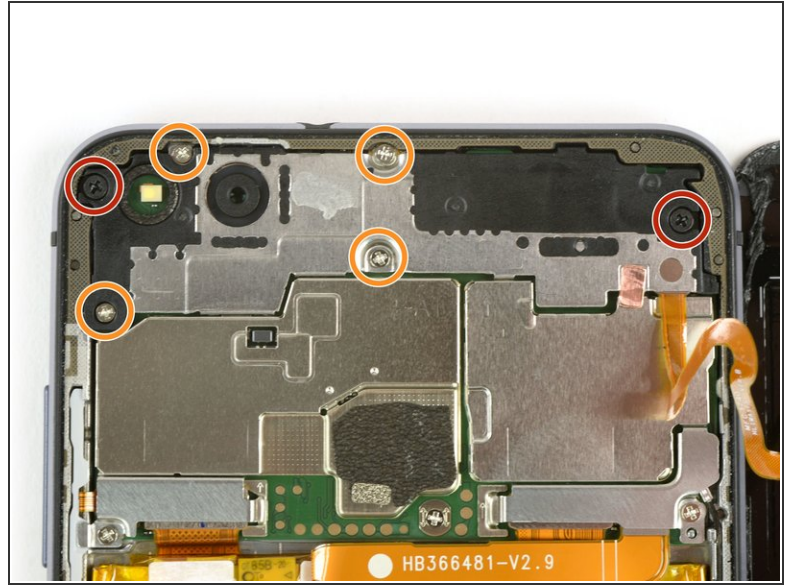
- Insert the tip of an opening pick between the back cover and the mid frame and slide it around the phone, to cut the adhesive.
 - Using a suction handle to lift the back cover may help to get an initial gap for the opening pick to put in.
- ❗ If the adhesive is hard to cut, [use an iOpener](#) to loosen it.

Step 2



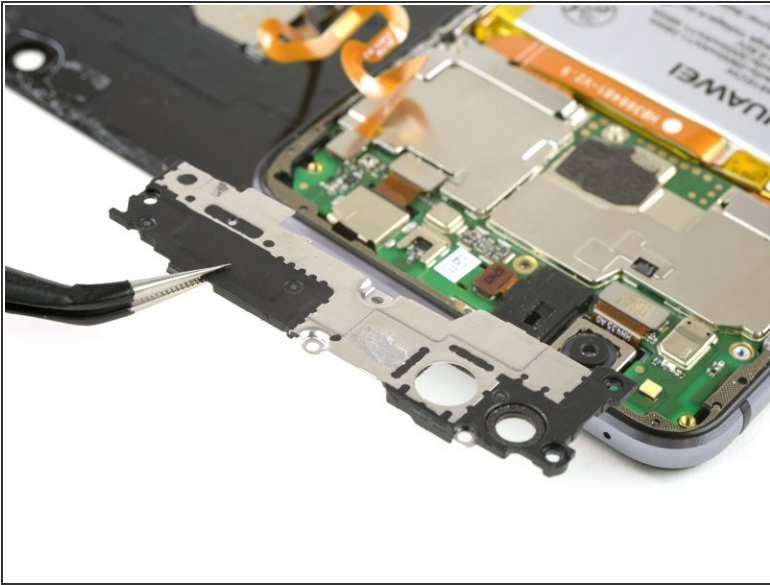
- After you cut the adhesive on every edge, twist your opening pick, to separate the rear cover from the phone.
- Flip the rear cover over to the right side of the phone.

Step 3



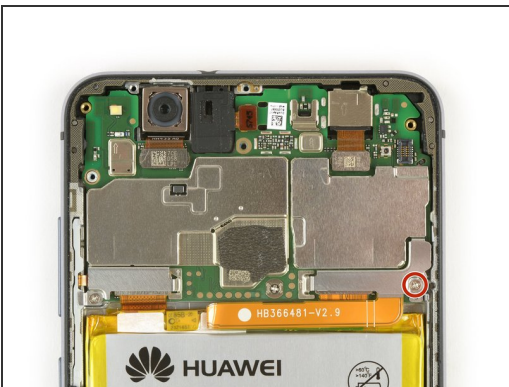
- Use a pair of tweezers to remove the sticker.
- Remove the two Phillips #00 screws.
- Remove the four 2.5 mm Phillips #00 screws.

Step 4



- Use tweezers to remove the mainboard shield.
- Use the flat end of a spudger to disconnect the finger print sensor flex cable.
- ❗ When reassembling apply new adhesive where it is necessary.

Step 5 — Battery Disconnection



- Remove the Phillips screw holding the battery connector plate in place.
- Remove the battery connector plate.
- Use the flat end of a spudger to disconnect the battery flex cable.

Step 6 — Rear Camera



- Use the flat end of a spudger to disconnect the rear camera flex cable.
- Remove the rear camera.

To reassemble your device, follow these instructions in reverse order. When reassembling your phone apply new adhesive where it is necessary.