



ThinkPad Yoga 12 SSD Replacement

Make sure you have a replacement ready! This...

Written By: [deleted]



INTRODUCTION

Make sure you have a replacement ready! This will involve some drive formatting.



TOOLS:

- [Spudger](#) (1)
- [Phillips #00 Screwdriver](#) (1)
- [Phillips #0 Screwdriver](#) (1)



PARTS:

- [1 TB SSD](#) (1)
- [Crucial MX500 250 GB SSD](#) (1)
- [Crucial MX500 500 GB SSD](#) (1)
- [2 TB SSD](#) (1)

Step 1 — Screws



- Remove the ten Phillips screws using a Philips 00 screwdriver

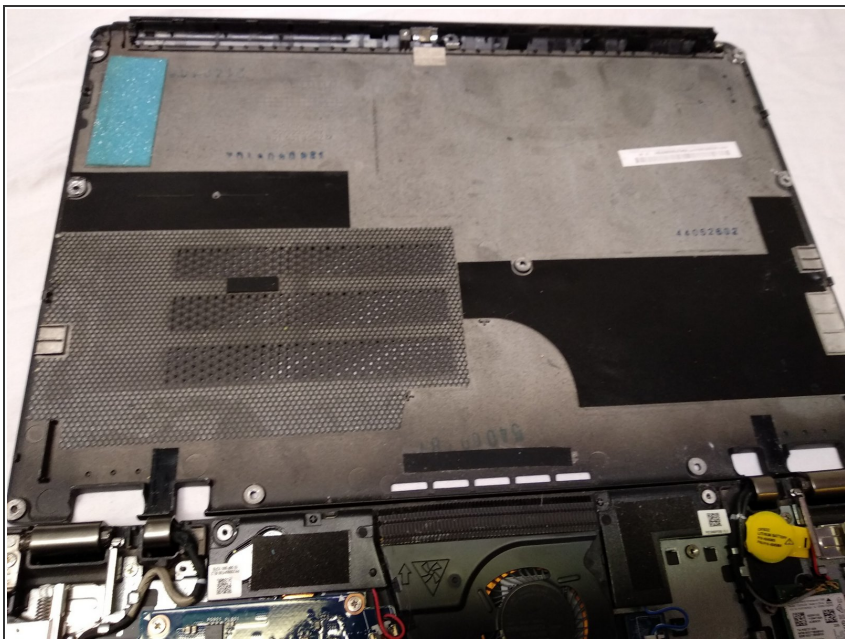
Step 2 — Prying



- Pry up the case carefully using a spudger.

⚠ Make sure to not push the spudger in too far, as this could result in internal damage

Step 3 — Lift off cover



- Lift off the cover, and you're done!

Step 4 — Remove SSD from the laptop



- Carefully remove two Phillips screws with a Phillips 0 screwdriver

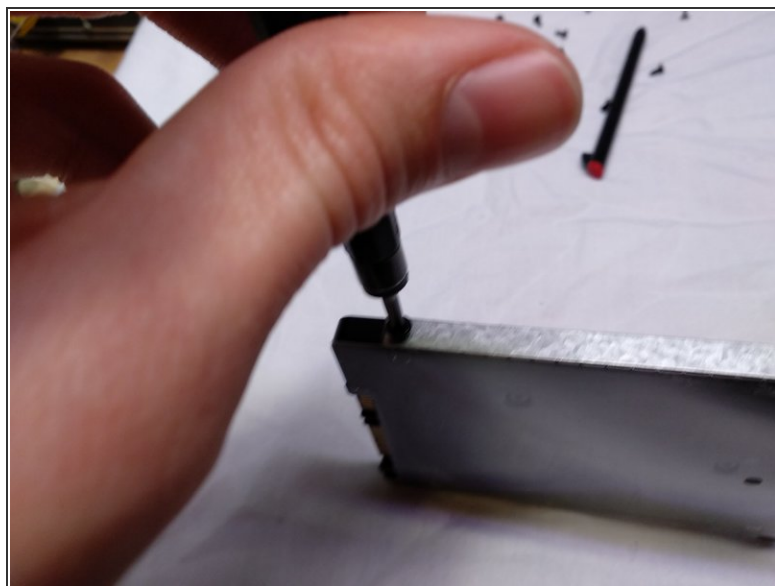
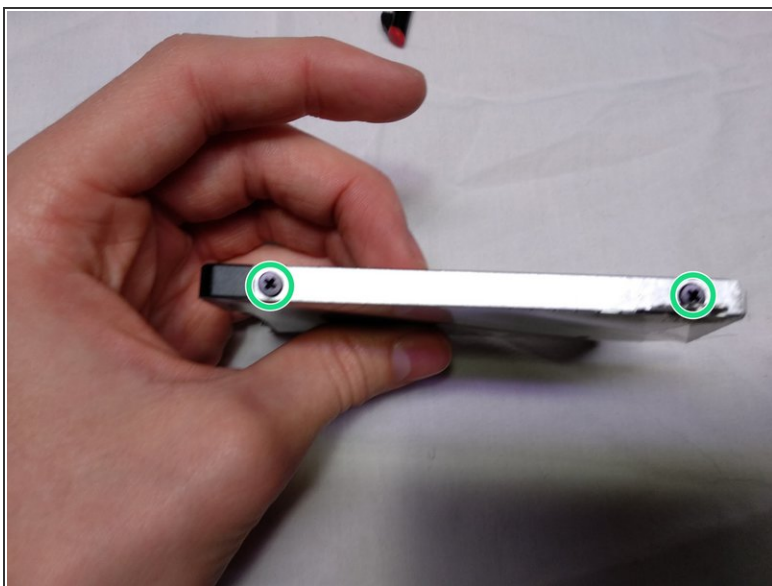
⚠ Static sensitive components!

Step 5



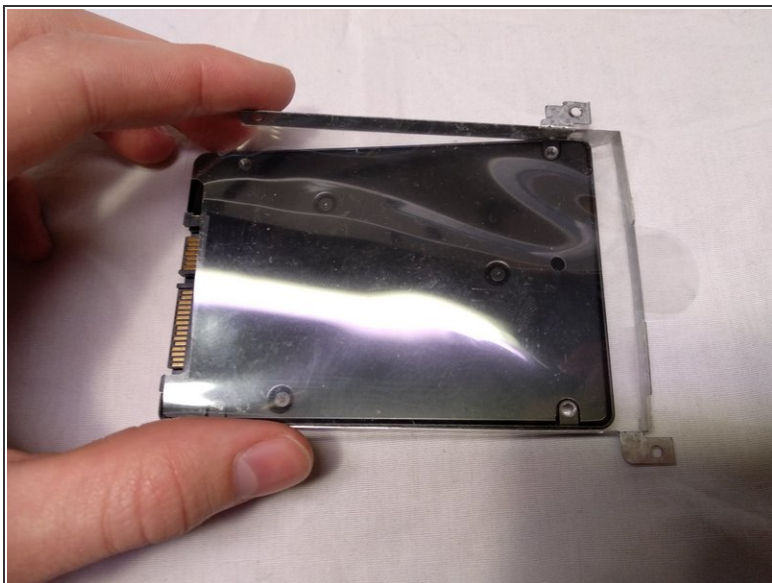
- Gently grab the plastic tab. Lift and pull the SSD assembly out of the computer

Step 6 — Remove enclosure



- Remove the 4 identical Phillips screws with a Phillips 00 screw driver (they are on both sides).

Step 7 — Done!



- Carefully remove the SSD enclosure.

i Note: The SSD enclosure is made of thin metal. It can be easily deformed. Be careful when removing from the SSD.

To reassemble your device, follow these instructions in reverse order.