



Sonos One Control Panel & Microphone Replacement

This guide shows how to access and replace the control panel and the microphones within the Sonos One.

Written By: Marcus Glowa



INTRODUCTION

This guide is for the replacement of the control panel and microphones for the Sonos One.

TOOLS:

- [iFixit Opening Tool](#) (1)
 - [Spudger](#) (1)
 - [TR8 Torx Security Screwdriver](#) (1)
 - [TR10 Torx Security Screwdriver](#) (1)
-

Step 1 — Protective Cover



- Disconnect all power cords.
- Remove the rubber foot and plastic screw guard on the bottom of the device using a plastic opening tool.
- Note: the rubber foot and plastic screw guard can be removed as one piece to make reassembly easier

Step 2



- Remove the four 10mm Torx T10 screws from the bottom of the speaker.


Step 3



- Remove the bottom cover by squeezing the protective cover slightly while pushing up with your fingers.

Step 4



 The protective cover clip is very thin and deforms easily.

- Remove the single 8mm Torx T10 screw and protective cover clip.

Step 5



- Slide the protective cover upwards to remove.

Step 6 — Control Panel & Microphone



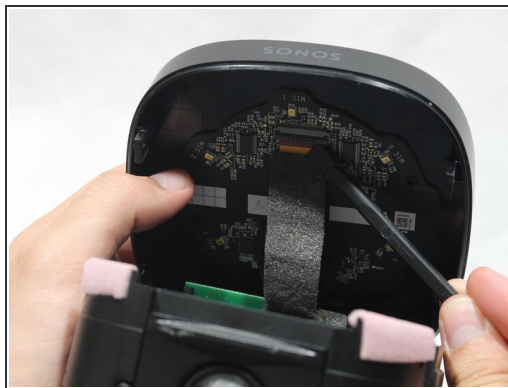
- ⓘ Use the pointed end of a spudger to remove the covers that hide the screws.
- Remove the four 9mm Torx T8 screws from around the perimeter of the control panel.

Step 7



- With the front of the unit facing you, lift the control panel up using your thumbs.
- ⓘ There's a ribbon cable attaching the control panel to the speaker so work slowly.

Step 8



- Use a spudger to flip up the retaining flap on the control panel ribbon cable [ZIF](#) socket.
- Pull the control panel ribbon cable out of its socket.

Step 9



- Pull the control panel away from the speaker to separate.

To reassemble your device, follow these instructions in reverse order.