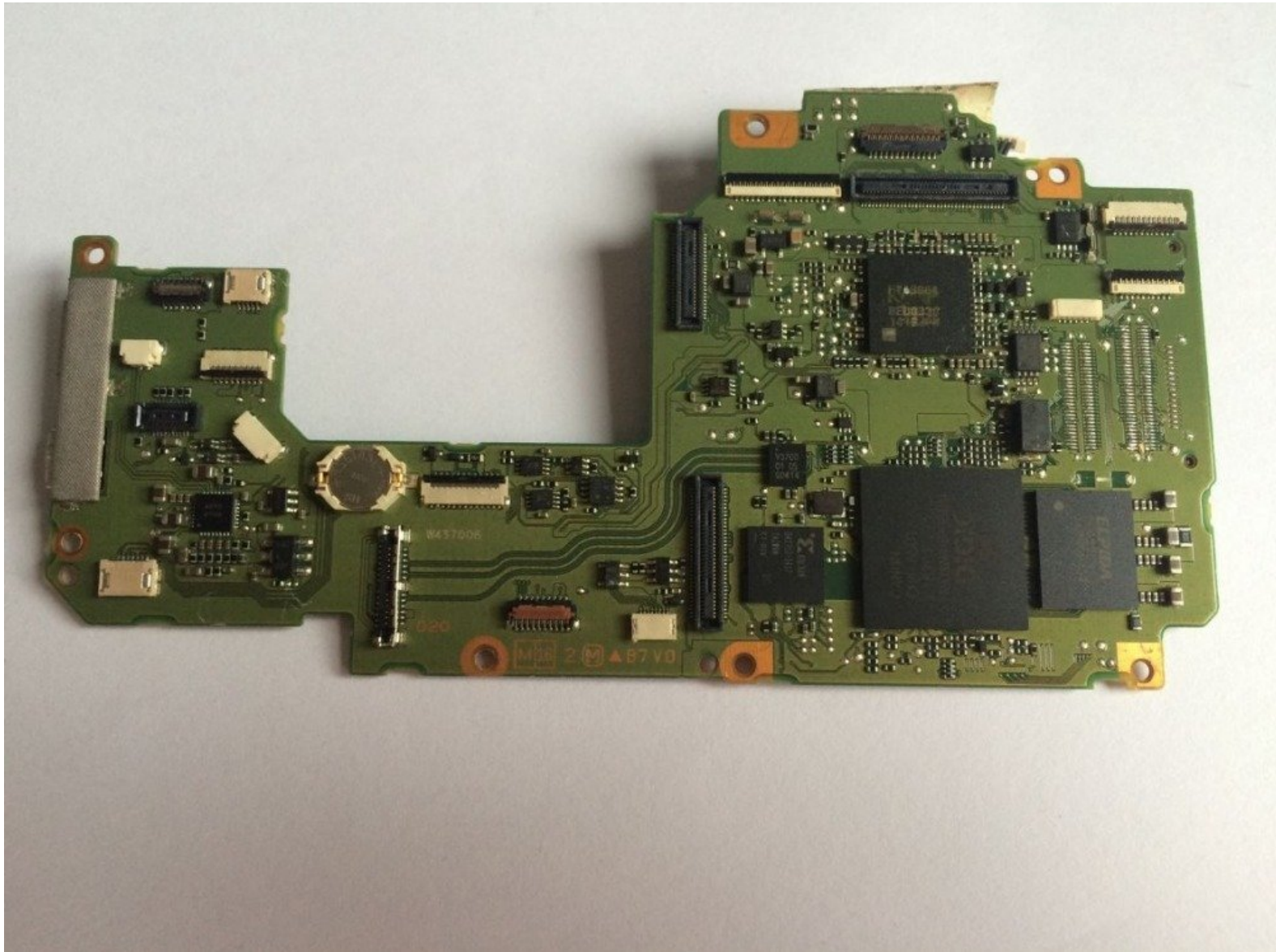




Canon EOS 70D Camera Motherboard Replacement

This guide will show you how to replace the main motherboard on a EOS 70D.

Written By: Tyler Baker



INTRODUCTION

The main motherboard controls all functions of the camera.



TOOLS:

- [Spudger](#) (1)
 - [Phillips #000 Screwdriver](#) (1)
 - [Tweezers](#) (1)
-

Step 1 — Battery



- Hold the camera with the lens pointing down. Press the highlighted button with your finger to release the cover.
- Pull cover over to expose the battery.

Step 2



- Press the white button with your finger to release the battery.
- Once released, the battery will eject out about two inches

Step 3



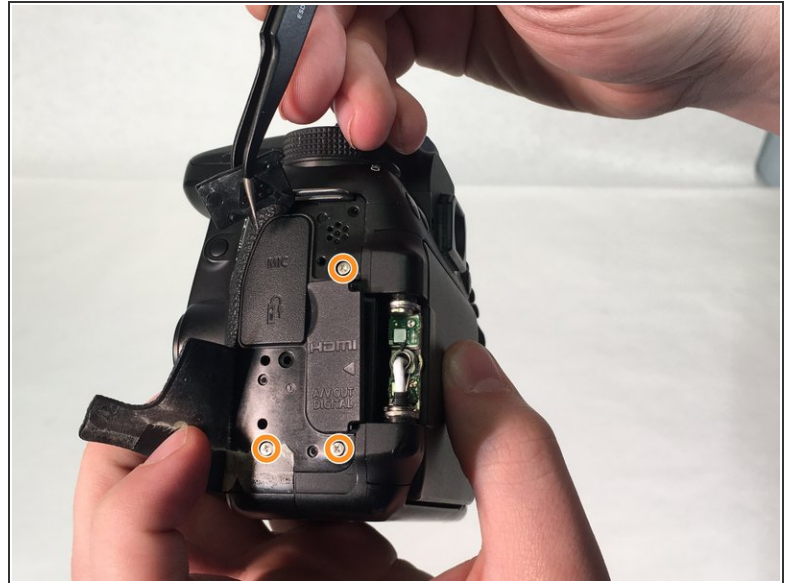
- Pull battery out of the camera.

Step 4 — LCD Touchscreen



- Pull Touchscreen out and rotate 90 degrees. Remove the four 3 mm Phillips #000 head screws that are now exposed at the hinge.
- Remove the two 5 mm Phillips #000 head screws that near the viewfinder.
- Use a spudger and pry apart the two plastic columns surrounding the screen hinge.
- ⓘ The screen will not be removed at this step.
- Rotate the screen forward 90 degrees and push it back into its housing against the camera.

Step 5



- Use a spudger to peel rubber matting on left hand side to expose camera backplate mounting screws.
- Remove three 4 mm Phillip #000 head screws that mount the backplate to the left side of camera.

Step 6





- Use tweezers to pry rubber matting on right hand side to expose backplate mounting screws.
- Remove four 4 mm Phillips #000 head screws that mount the backplate to the right side of camera.

Step 7

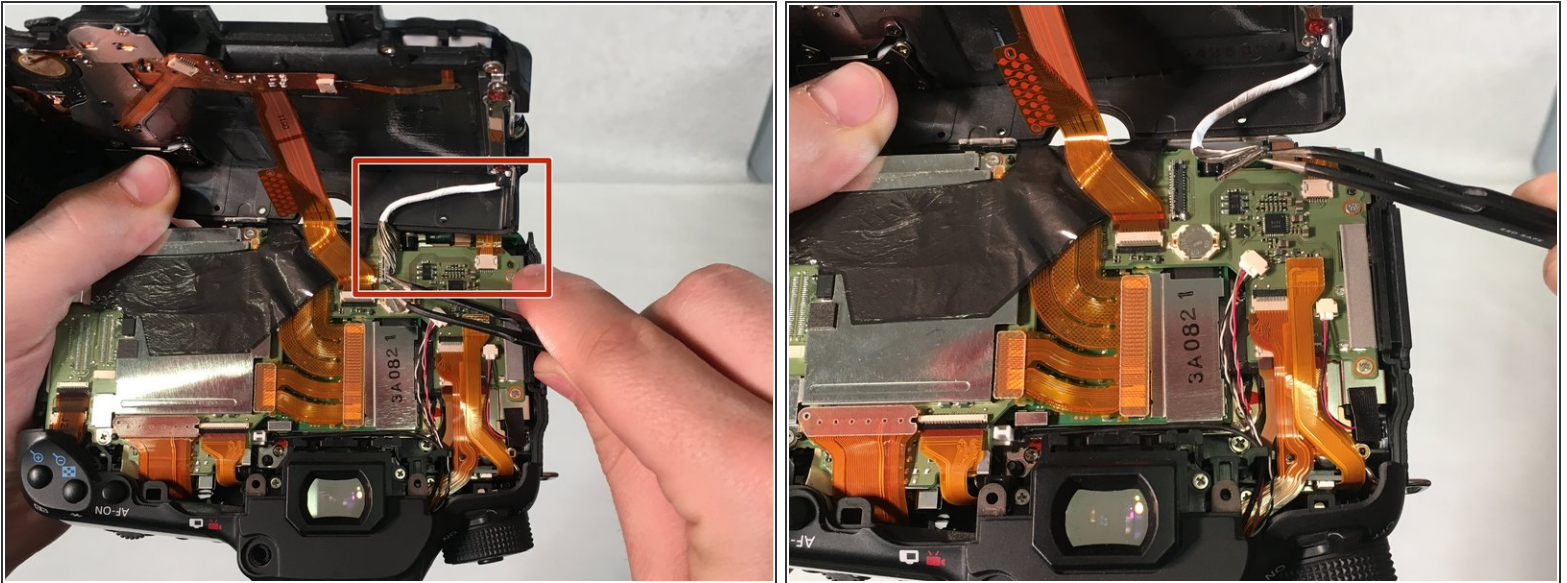


- Turn camera upside down. Remove five 5 mm Phillips #000 head screws securing the backplate to the bottom of the camera.
- Grab the backplate and gently pull away from camera.

 The backplate will still be attached by the wires running to the LCD touchscreen.

 The screen will still be attached to the camera and won't be removed until step 10.

Step 8



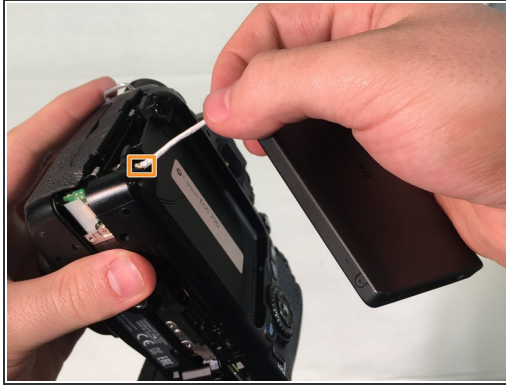
- Carefully pry open backplate from camera to expose LCD connector (white wire). LCD connector is attached with a metal bar to the motherboard.
- Use tweezers to gently pry metal bar connector from camera motherboard.

Step 9



- Remove two 4 mm Phillips #000 head screws that mount the LCD touchscreen to the hinge on the camera.

Step 10



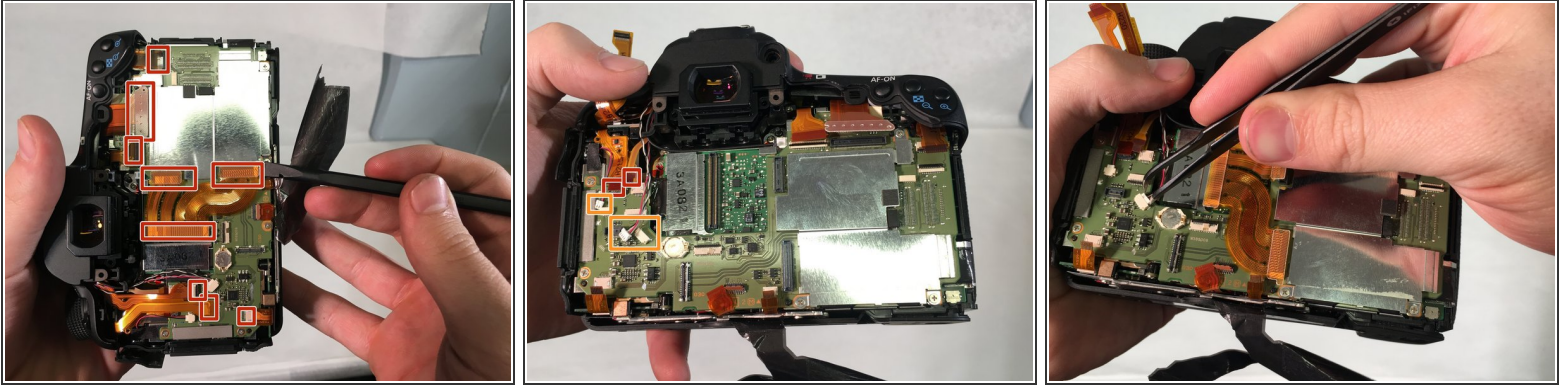
- Grip the screen with your hand and gently pull white connecting wire through hole in backplate.
 - Once the connector reaches the hole, twist the connector and pull completely through hole.
- i** You must twist the connector in order to fit through hole.

Step 11 — Camera Motherboard



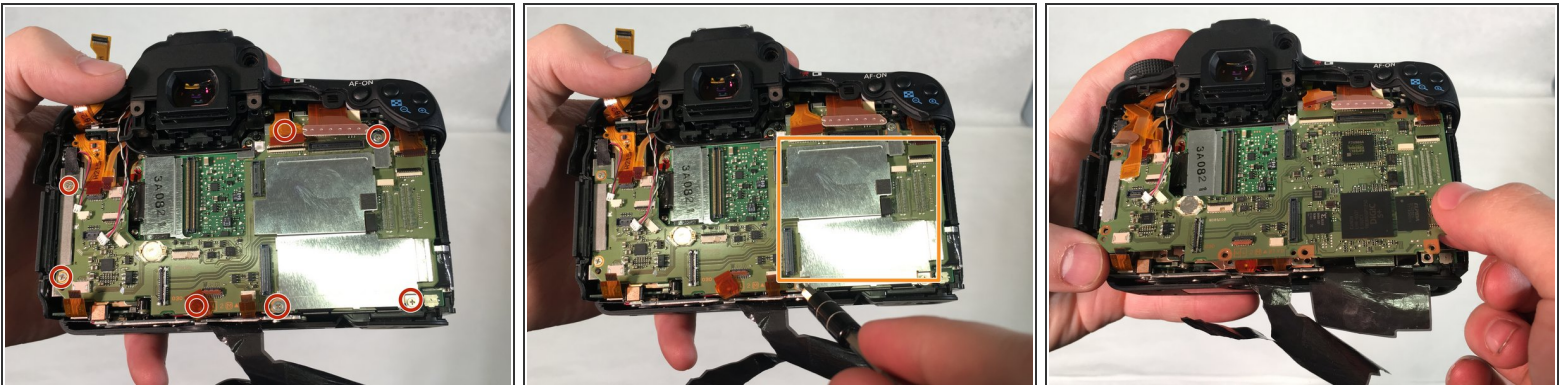
- Use spudger to lift edge of black heat tape.
- Slowly peel back black heat tape.

Step 12



- Very carefully, use spudger to remove nine orangish ribbon cables.
 - Using tweezers remove the two wire cables shown.
- ⚠ Slowly remove ribbon cables because they can tear very easily.

Step 13



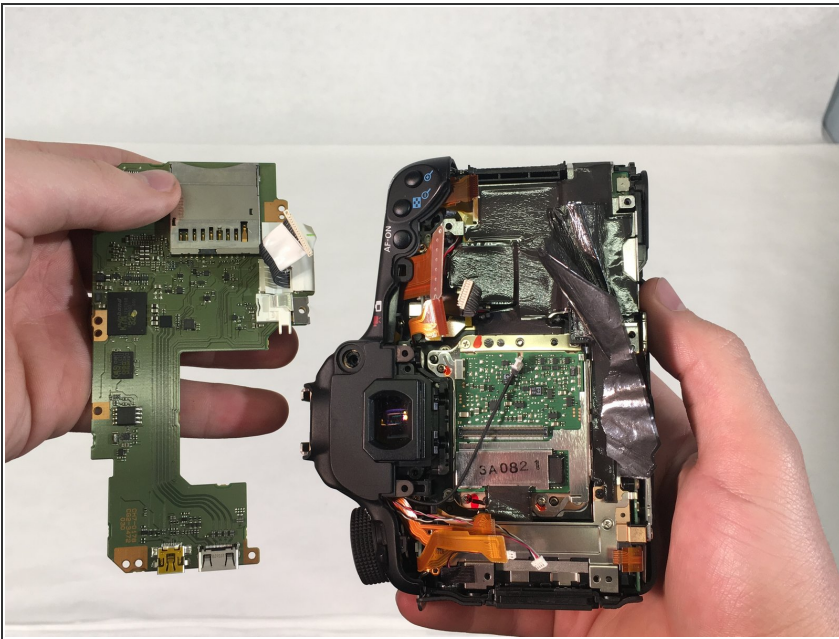
- Remove seven 5 mm Phillips #000 head screws around motherboard.
 - Once the five screws are removed, remove the metal chip covered by hand.
- i** This will leave the mother board exposed, attached by two cable wires underneath.

Step 14



- Slowly lift motherboard to expose the two cable wires underneath.
- Using tweezers, unattach the two wire cables holding the motherboard in.

Step 15



- Carefully remove motherboard.

To reassemble your device, follow these instructions in reverse order.