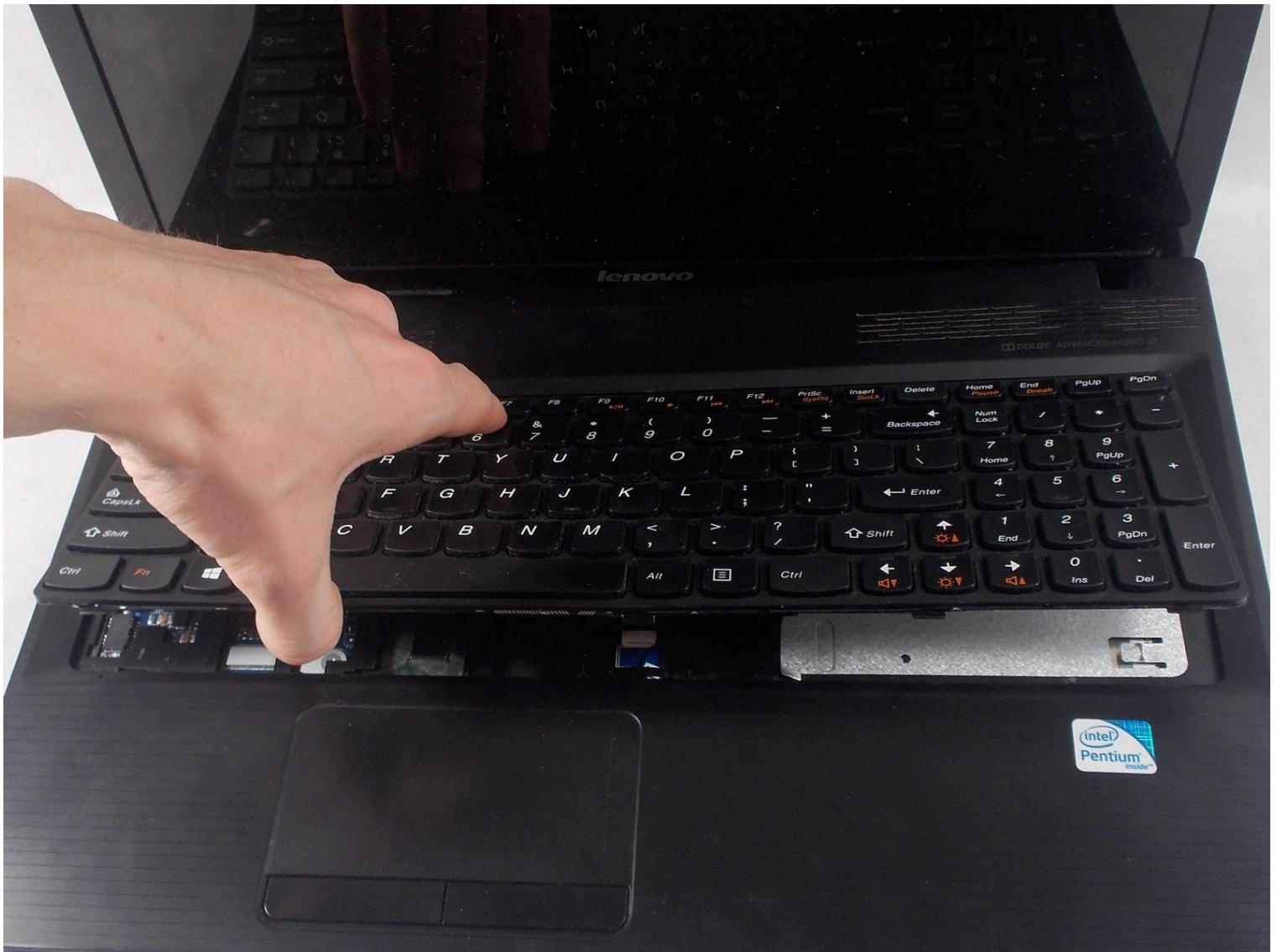




Lenovo IdeaPad N580 Keyboard and Trackpad Replacement

If your keyboard or trackpad is no longer...

Written By: Alex Amorim



INTRODUCTION

If your keyboard or trackpad is no longer responsive, you may want to replace it by following this guide.



TOOLS:

[Phillips #0 Screwdriver](#) (1)

[6-in-1 Screwdriver](#) (1)

[Spudger](#) (1)



PARTS:

[Lenovo Keyboard - 25206719](#) (1)

Step 1 — Battery



- Turn over the device so that the bottom is facing up. Make sure the hinged side is facing you.

Step 2



- Move the right switch towards the right until it clicks in place. You should then see the color red reveal from where the switch was originally.

Step 3



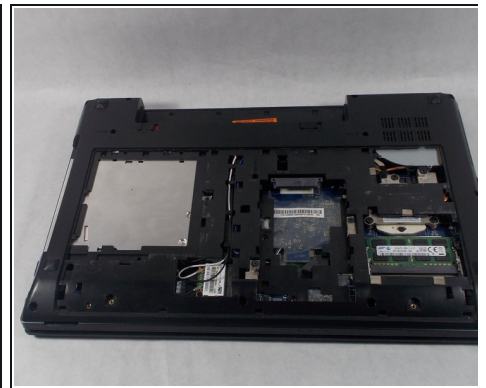
- Now take your left hand and slide the left switch to the left.
- ⓘ This switch will not click in place like the other switch, so make sure to keep your left hand on the switch.

Step 4



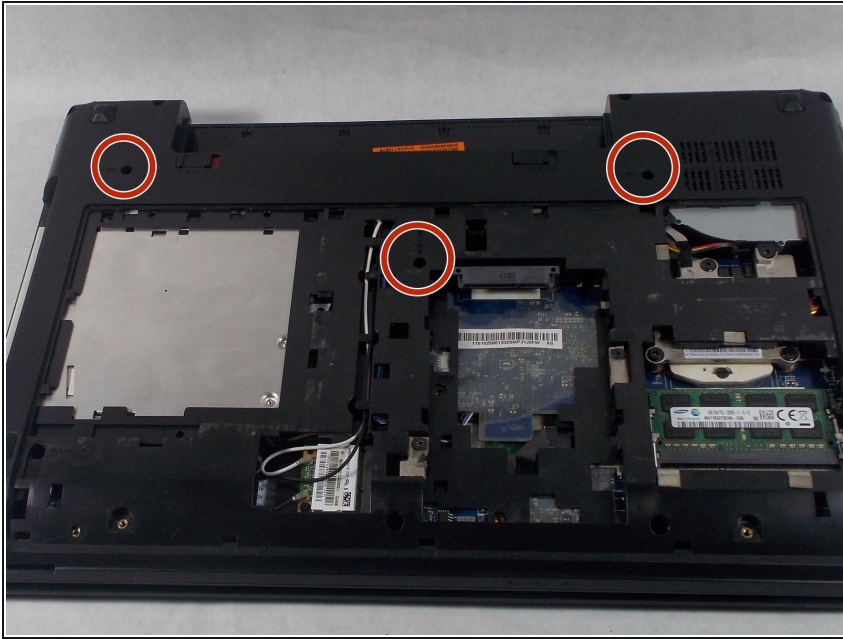
- Take your free hand and place it on the battery. Gently slide it away from its slot.

Step 5 — Keyboard and Trackpad



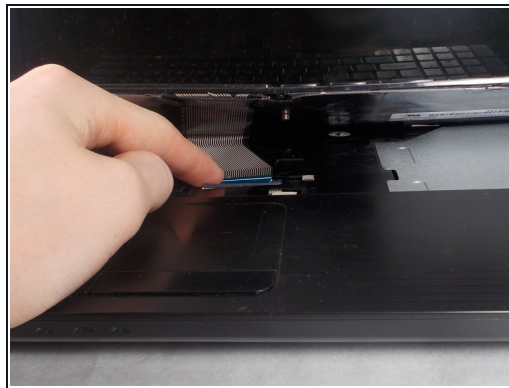
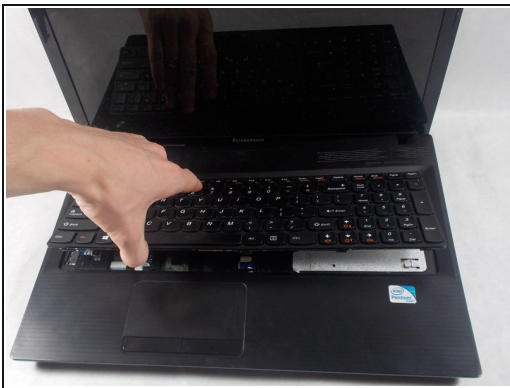
- Rotate the laptop so that now the hinge is facing away from you.
- Remove the two 2.5 x 4.0 mm Phillips #0 screws from the underside of the laptop.
- Slide the bottom panel towards you until it stops, and then carefully lift it off.

Step 6



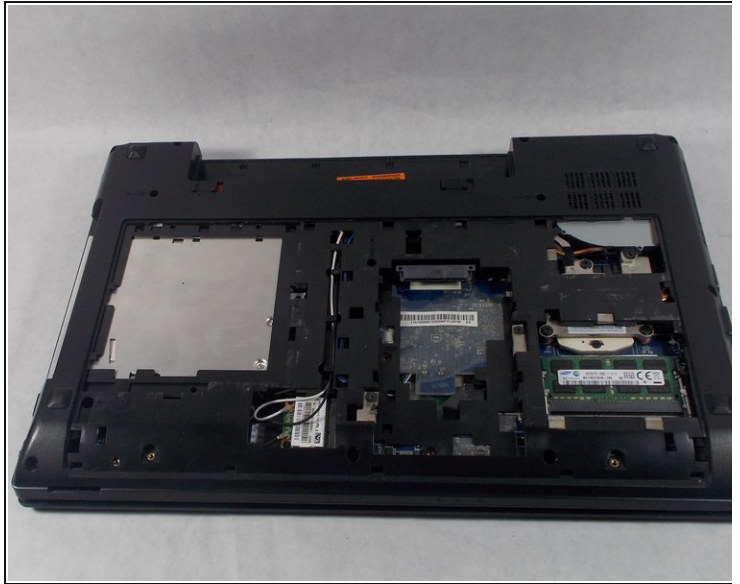
- Remove the three 2.0 x 6.0 mm Phillips #0 screws located on the underside of the device.

Step 7



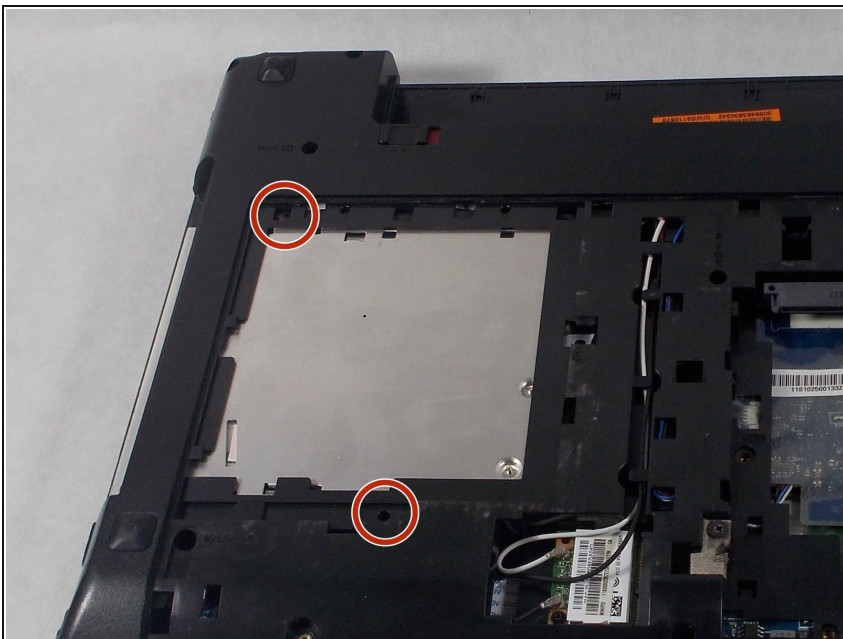
- Turn the laptop right side up and open the lid.
- Using the spudger and your fingers, get in between the keyboard's edge and lift it up.
- Carefully lift the keyboard ribbon cable out of the socket it is in.

Step 8



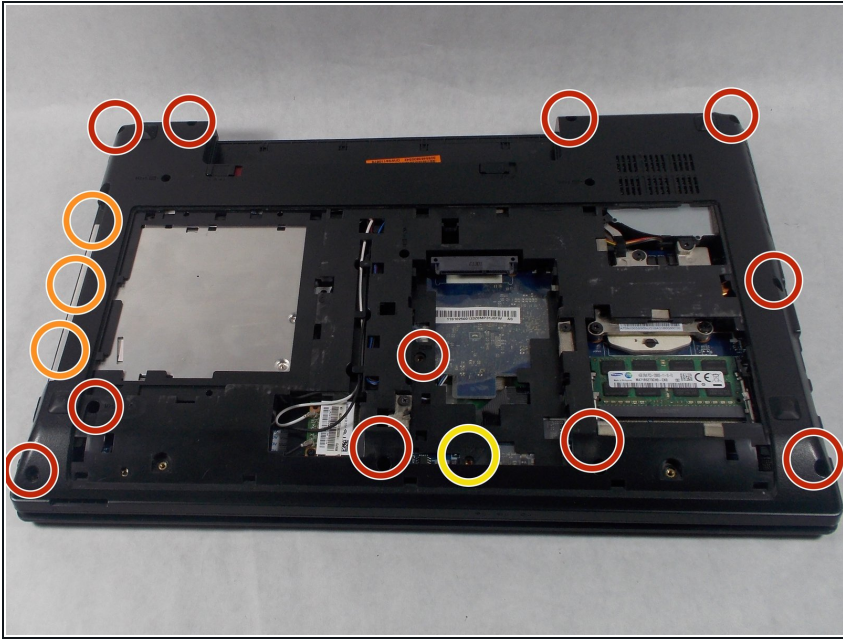
- Remove the 2.5 x 6.0 mm Phillips #0 from the center of the device.
- Close the laptop and place it face down once again.

Step 9



- If a hard disk drive is installed, remove the two 2.5 x 4.0 mm Phillips #0 screws.
- Slide the hard disk drive out of its socket.

Step 10



- Remove the eleven 2.5 x 6.0 mm Phillips #0 screws.
- Remove the three 2.0 x 3.0 mm flat head screws.
- Remove the 2.5 x 4.0 mm Phillips #0 screw.

Step 11



- Turn the laptop right side up and open the lid.
- Disconnect the two ribbon cables from the center.
- Lift the keyboard bezel (with trackpad) straight up and out.

To reassemble your device, follow these instructions in reverse order.