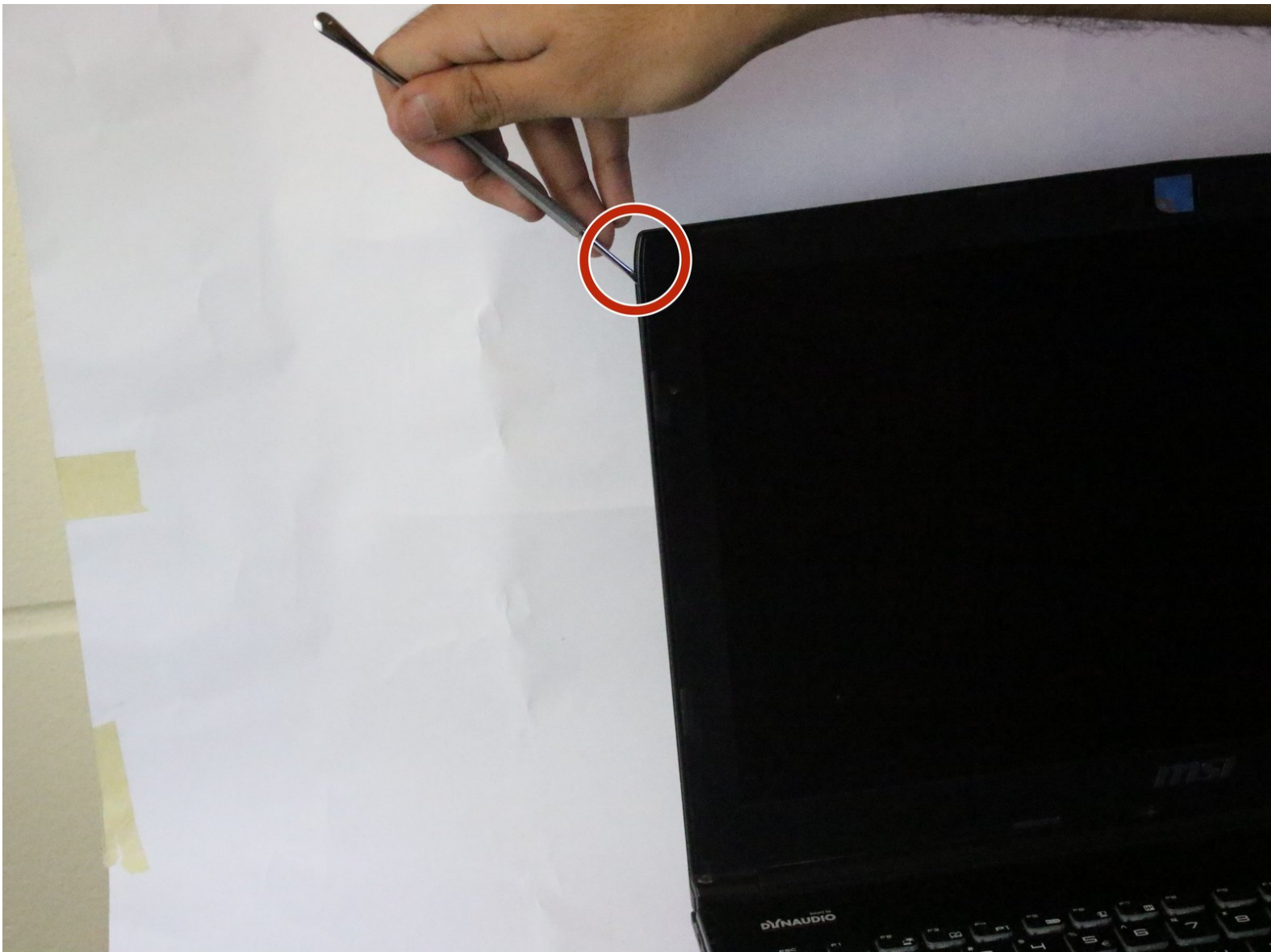




MSI GE62 Apache Pro 004 Screen Replacement

Using this guide you will be able to replace the screen on your device.

Written By: Samer Soukieh





TOOLS:

- [Phillips #00 Screwdriver](#) (1)
- [Phillips #1 Screwdriver](#) (1)

Step 1 — Battery



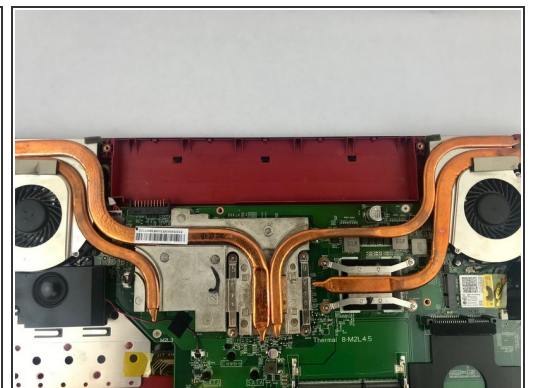
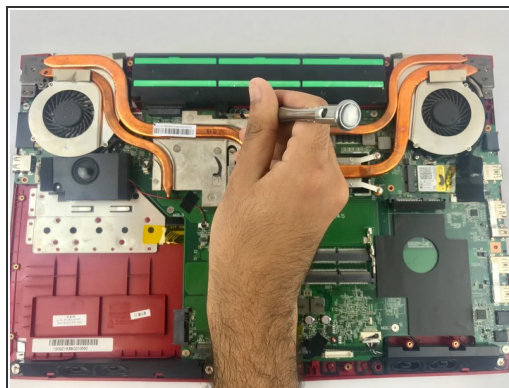
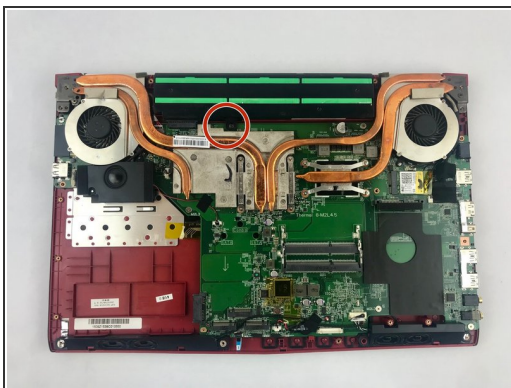
- Start with the bottom of the laptop facing up.

Step 2



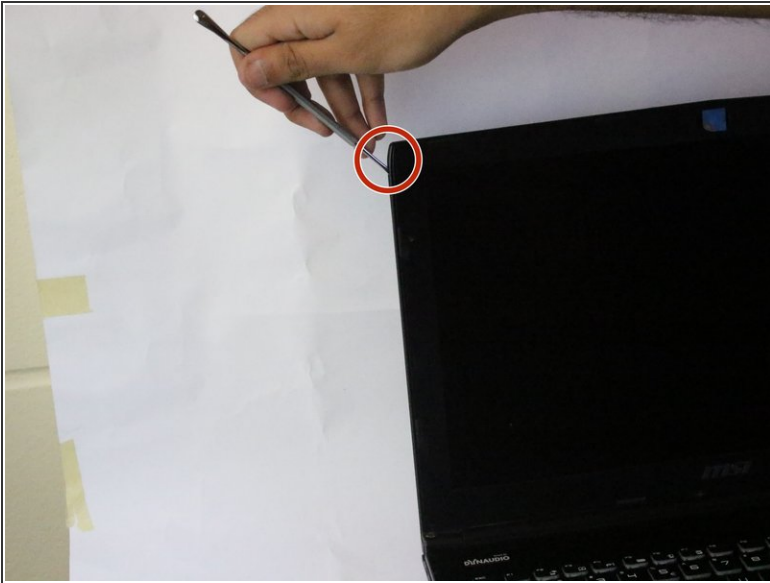
- Remove the 15 screws from the bottom of the laptop with a PH1 screwdriver.
- Remove the bottom plate
- ⓘ Keep track of all the screws and which slot they came from, as they slightly differ. We recommend this system: lay out on a piece of paper and pretending the paper is the device. Place the screws on the paper approximately where they would go

Step 3



- Remove the screw holding down the battery with a PH1 screwdriver.
- Pull out the battery.

Step 4 — Screen




- Open the laptop up as if you were going to use it.
- Wedge a spudger in between the screen bezel and work it around to separate it.

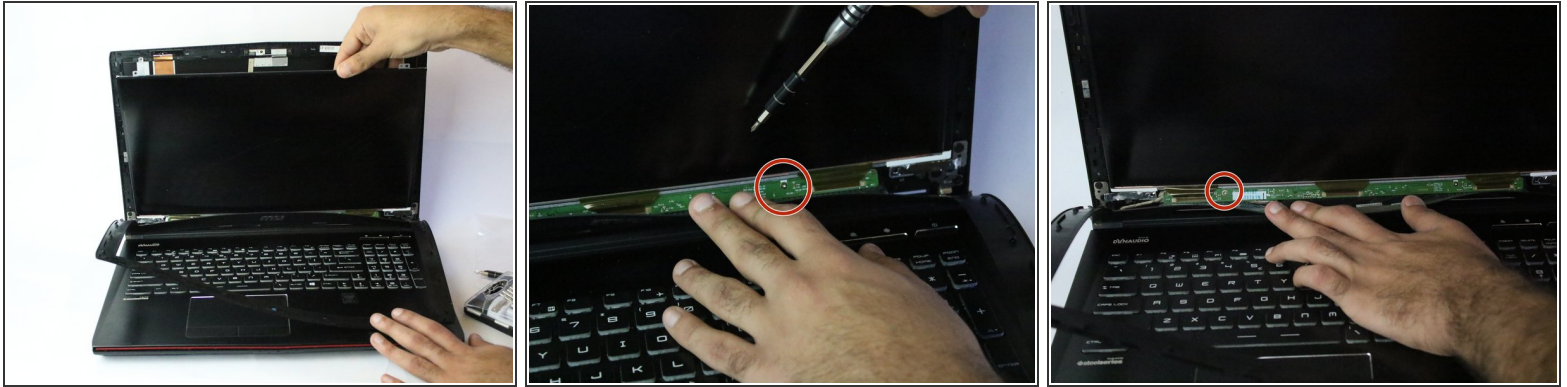
Step 5



- Remove the screws holding in the screen at the corners with a PH1 screwdriver.

 Be very careful as the screen may tilt forward so make sure your hand is right is on the screen when the screw comes off.

Step 6



- Remove the bezel from the screen.
- Remove the two screws located at the bottom of the screen using the PH1 screwdriver.

To reassemble your device, follow these instructions in reverse order.