



Sceptre X9 Komodo VII Liquid Crystal Display Replacement

Written By: Alvin Lam



TOOLS:

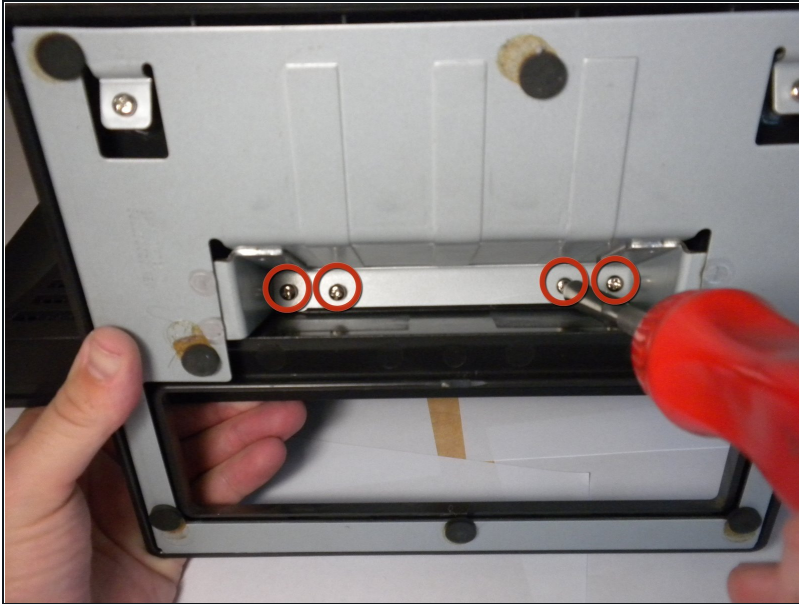
6-in-1 Screwdriver (1)

Phillips #0 Screwdriver (1)

Phillips #2 Screwdriver (1)

iFixit Opening Tool (1)

Step 1 — Stand



- Place the monitor face down.
- Remove the four 11.5mm screws with a #2 Phillips screwdriver.
- Remove the stand by pulling it out.

Step 2



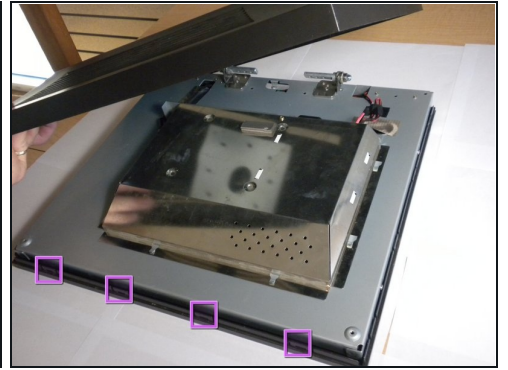
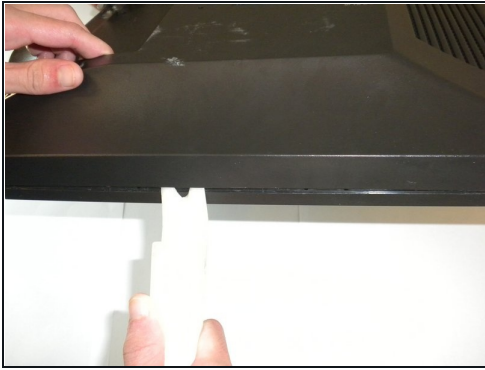
- Remove two 11.5mm screws with a #2 Phillips screwdriver.
- Remove the plastic bar.

Step 3 — Board Cover



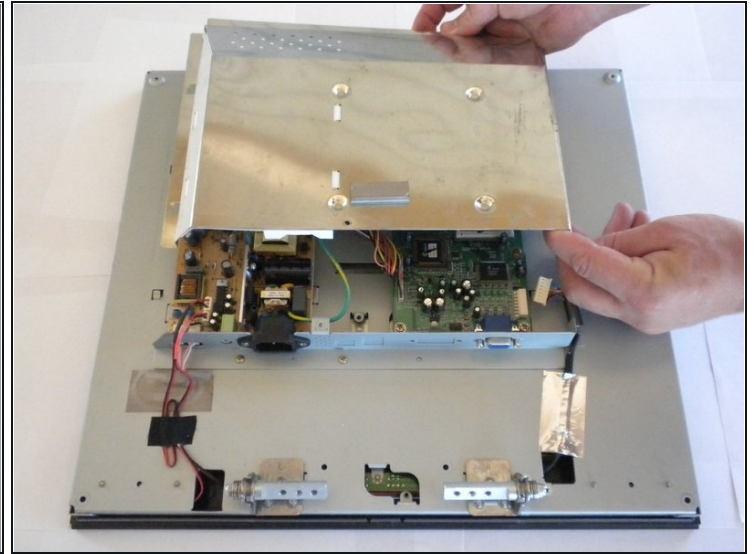
- Using a #2 Phillips screwdriver, remove the six 7mm screws at the circled locations.

Step 4



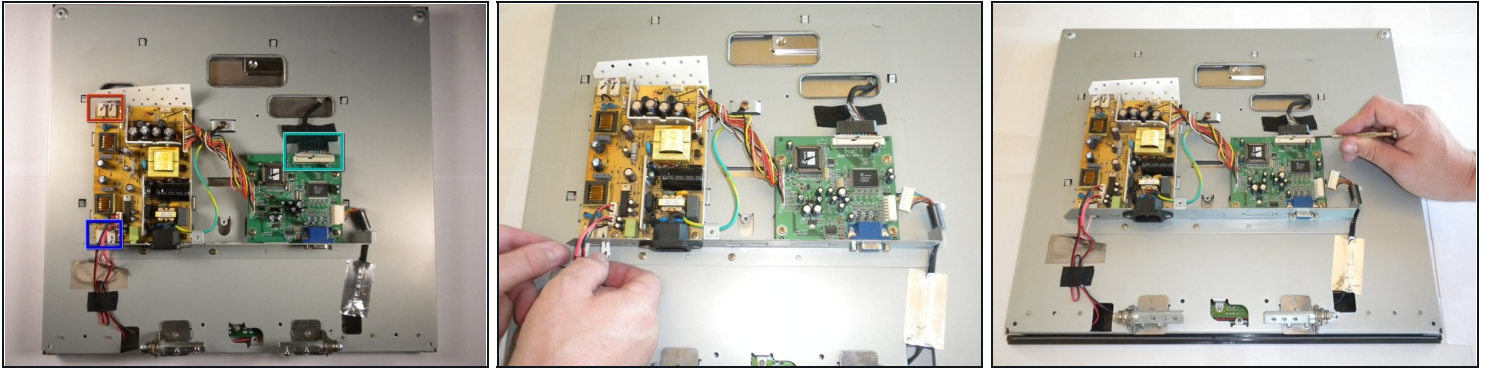
- Pry the monitor using the plastic opening tool to release the clips holding the cover on.
 - ① There are four clips on each side, four on the top, and one on the bottom.
 - ① You may hear a loud snapping noise when releasing the clips. Do not be alarmed, it is natural.
- Once all the clips have been released, remove the cover by pulling it up.

Step 5



- Using the #2 Phillips screwdriver, remove the one 6mm screw.
- Unplug the indicated cable by pulling on the base.
- Slide the cover toward the top of the monitor.
- Remove the cover.

Step 6 — Liquid Crystal Display



⚠ Use caution when removing the connectors as they can easily break when removing.

- Disconnect the two connectors at the top-left of the power board.
- Disconnect the two connectors at the very bottom of the power board (pink wire).
- Disconnect the multi-pin connector at the top of the motherboard.

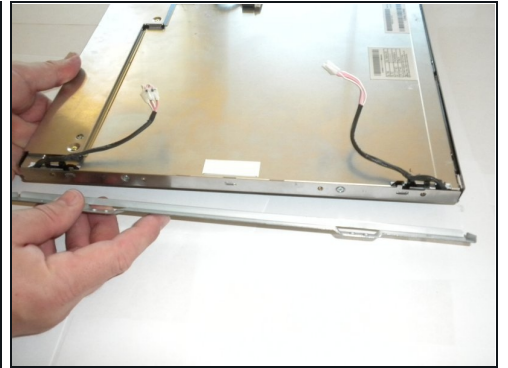
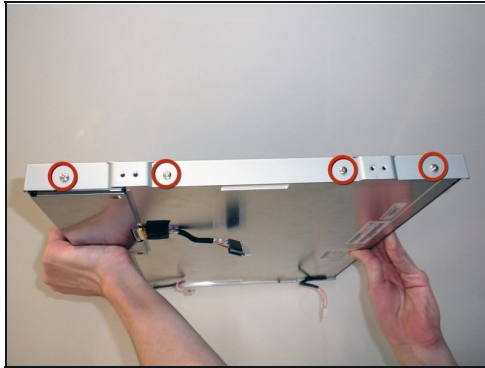
ⓘ A small flat-blade screwdriver or [tweezers](#) can be used to assist in removal of connectors.

Step 7



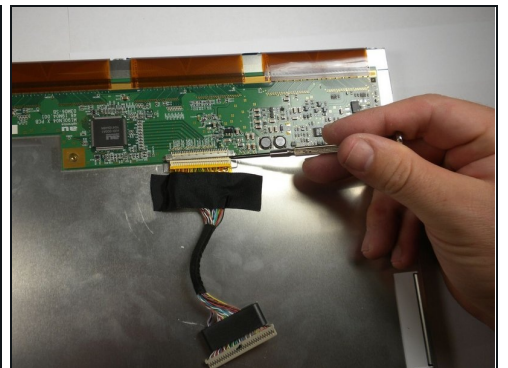
- Use a #2 Phillips to unscrew the two 4.5mm screws on each side of the back panel.
- Carefully slide the connectors through their respective openings.
- Lift the back panel to reveal the LCD back cover.

Step 8 — LCD Back Cover



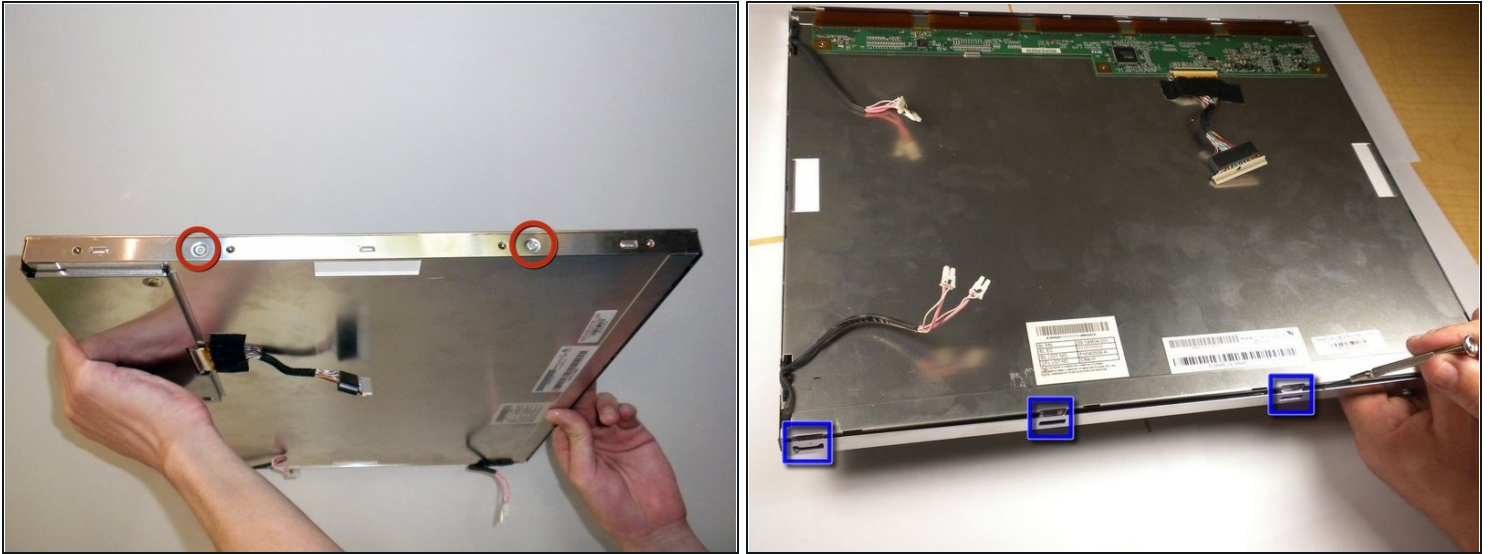
- Use a #2 Phillips to remove the four 6mm screws on the bezel for each side of the back cover.
- Remove the bezels from the LCD back cover (the bezels should simply fall off once the screws are removed).

Step 9



- Use a #0 Phillips to remove the three 4.5mm screws located on the LCD back cover.
- Lift the inner panel to remove it.
- Disconnect the multi-pin connector on the LCD back cover by firmly pulling down on it.

Step 10



- Use a #0 Phillips to remove the two 6mm screws on each side of the LCD cover.
- There are tabs holding down the cover. You may have to use a bit of force to pry them open.
- A small flat-blade screwdriver can be used to pry off LCD cover.

Step 11



- Lift the LCD back cover to reveal the LCD screen below.

To reassemble your device, follow these instructions in reverse order.