



iMac Intel 20" EMC 2105 and 2118 Optical Drive Replacement

Written By: Walter Galan

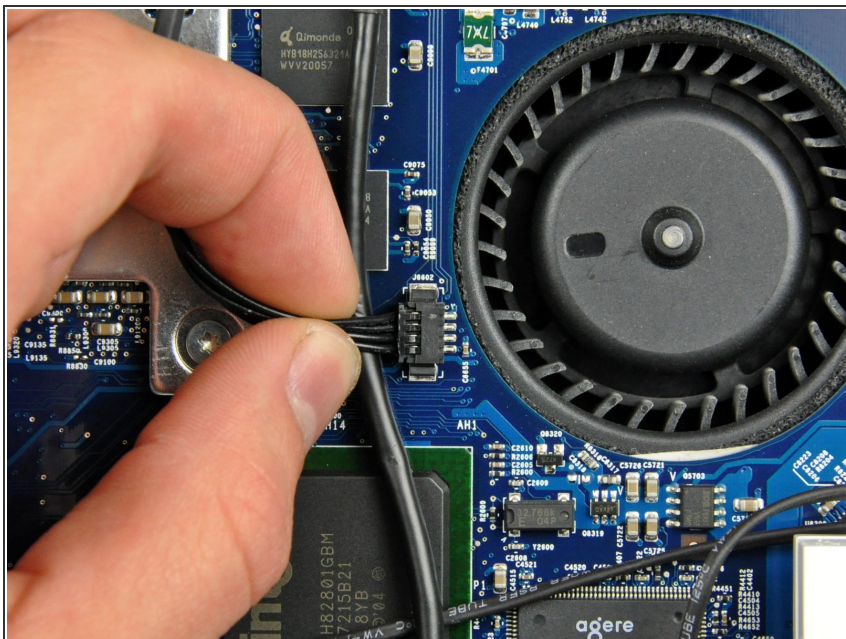




TOOLS:

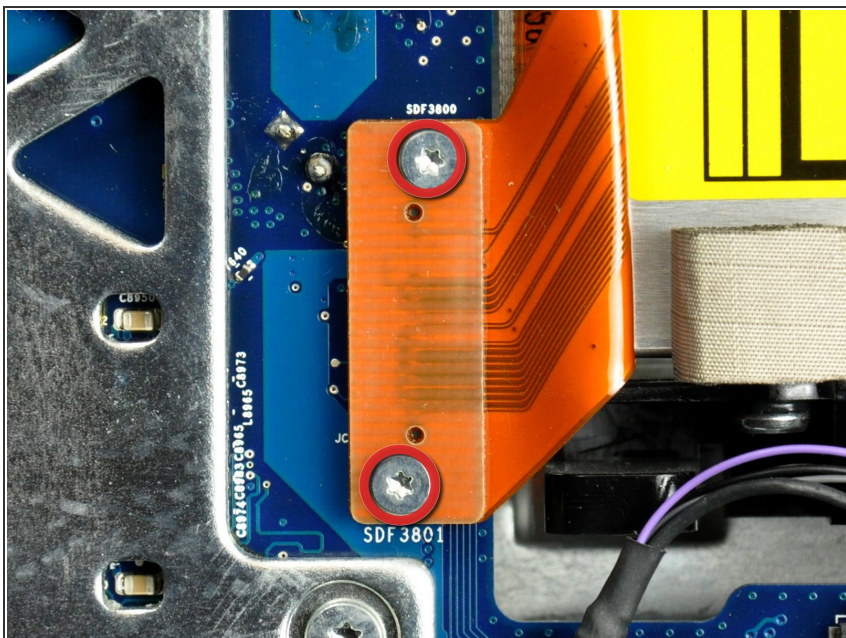
- [T6 Torx Screwdriver](#) (1)
- [T10 Torx Screwdriver](#) (1)
- [Spudger](#) (1)

Step 1 — Optical Drive



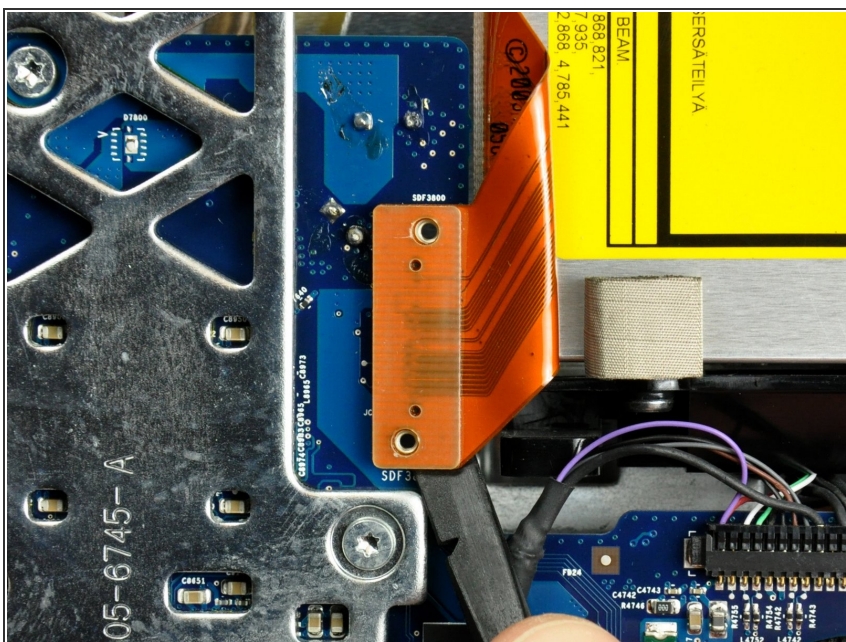
- Disconnect the optical drive thermal sensor cable by pulling its connector away from the socket on the logic board.
- ⓘ Pull the connector parallel to the face of the logic board.

Step 2



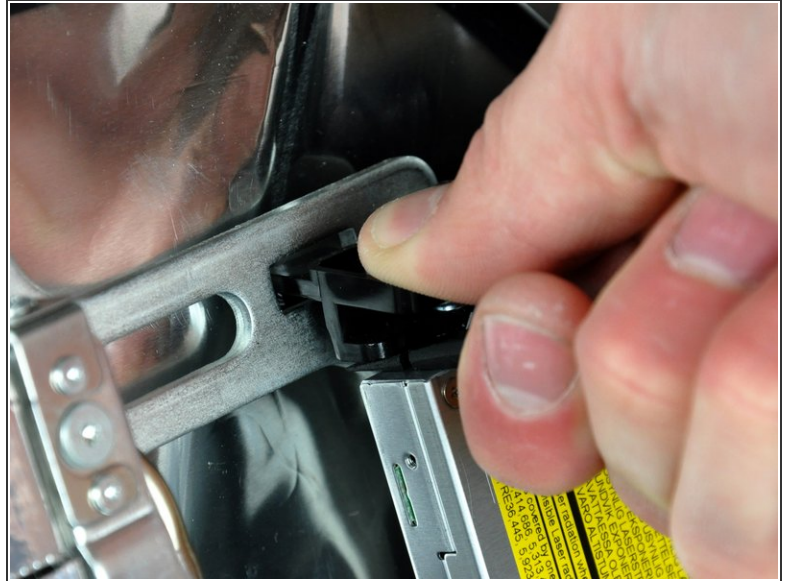
- Remove the two 3.6mm T6 Torx screws securing the optical drive ribbon cable connector to the logic board.

Step 3



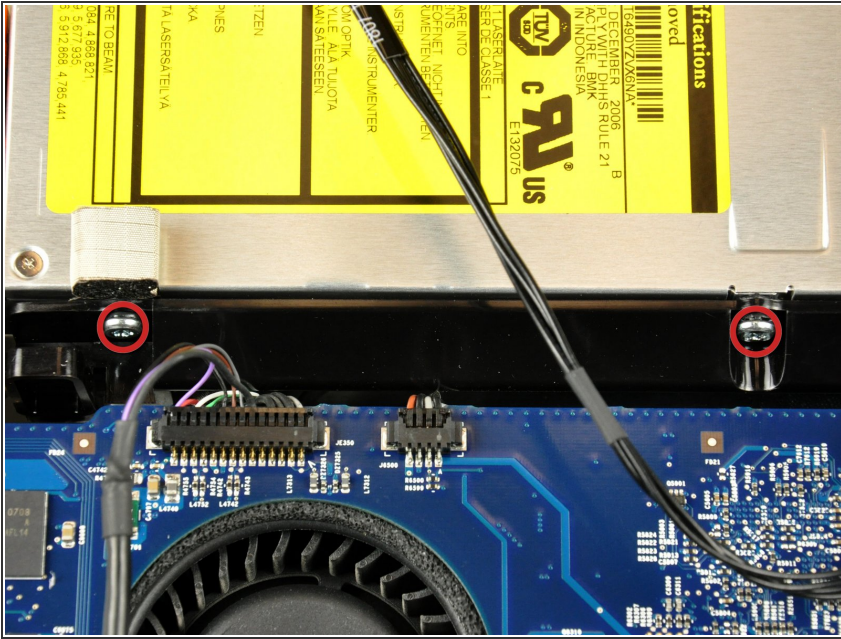
- Use the flat end of a spudger to pry the optical drive ribbon cable connector up off the logic board.
- ⓘ The connector is most easily removed when prying from the top or bottom of the connector.
- Bend the optical drive ribbon cable back away from the logic board.
- ⚠ Be very careful when moving the optical drive ribbon cable as it is delicate and easily ripped.

Step 4



- i** Apple's "engineers" didn't learn much about deflection and material stiffness when they went to "college", so this optical drive is particularly difficult to remove because the bracket flexes too much. The next few steps require some patience and a good amount of force.
- Insert the flat end of a spudger into the gap between the optical drive and its bracket until it contacts the chassis.
- Grab the spudger as close to the surface of the optical drive as you can, then depress the release tab with your thumb while pulling toward yourself.
- i** The wedge shape of the spudger may cause it to slip out of the gap toward yourself. Be sure to press the spudger in toward the rear case while squeezing the release tab.

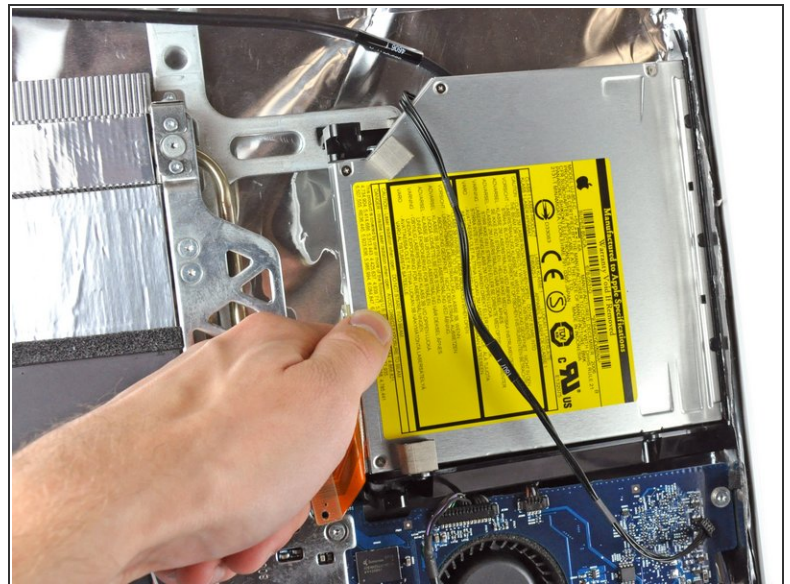
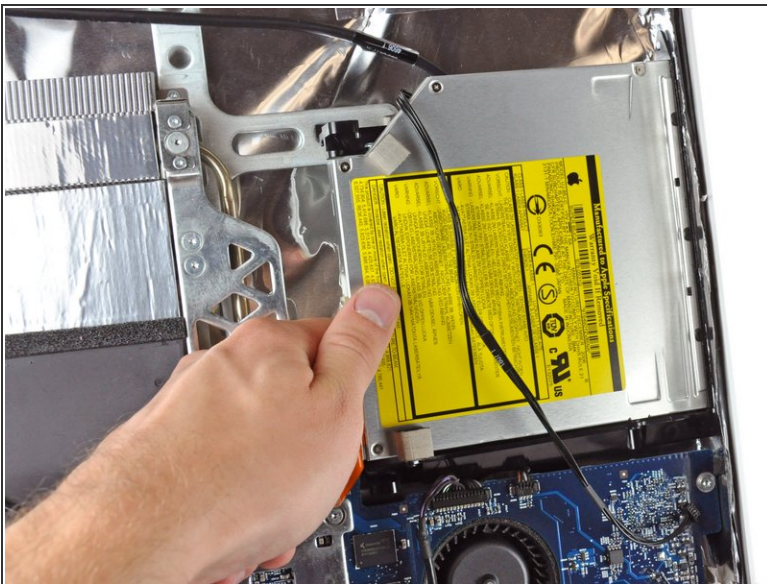
Step 5



- Remove the two 6mm T10 Torx screws from the side of the optical drive.

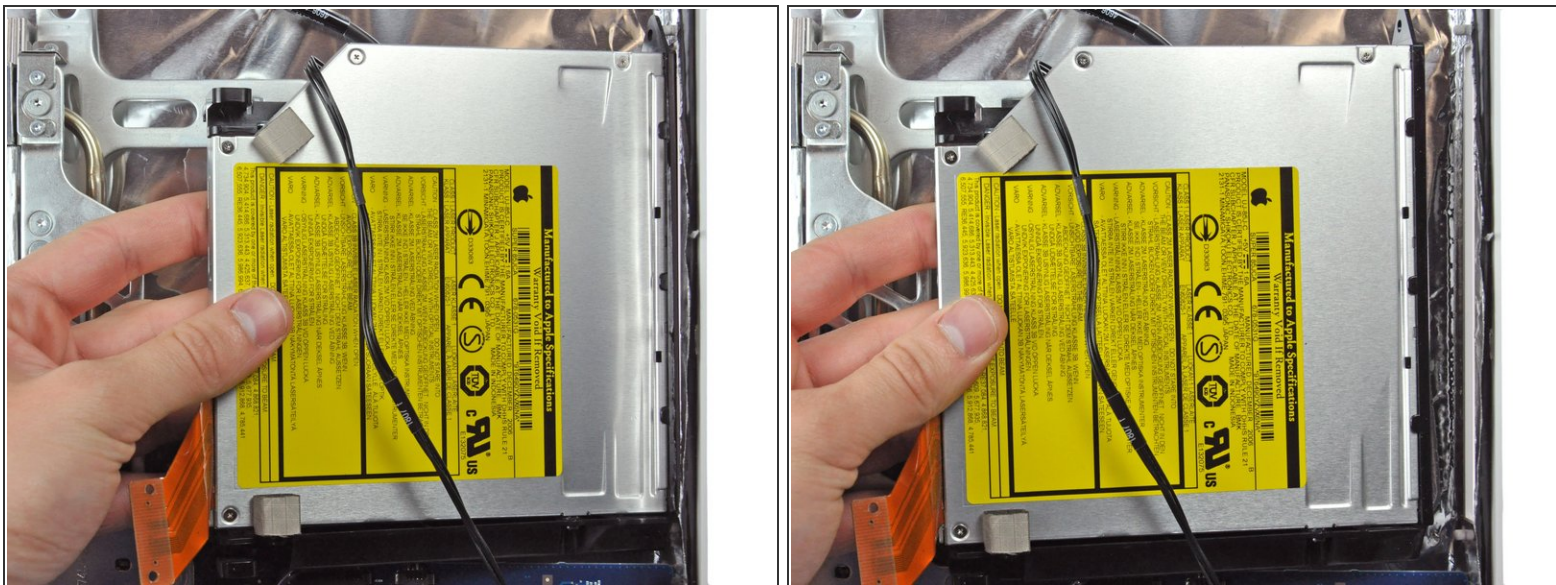
❗ It's a good idea to lay your iMac flat on a table before removing these screws to avoid them falling behind the logic board.

Step 6



- Reach behind the chassis and use your finger to unclip the lower optical drive tab from the chassis.

Step 7



- Maneuver the optical drive out of the rear case, minding the two plastic pins molded into the rear case near the open end of the optical drive that can break off.

To reassemble your device, follow these instructions in reverse order.