



# Samsung Galaxy Note5 Power Button Replacement

This guide will help you replace the power button on your device.

Written By: Bernice Nunez



# INTRODUCTION

Broken power button? Use this guide to remove the power button on your Galaxy Note 5. The guide will take you through the steps of removing the back glass, separating the middle housing and removing the necessary parts to remove the power button.



## TOOLS:

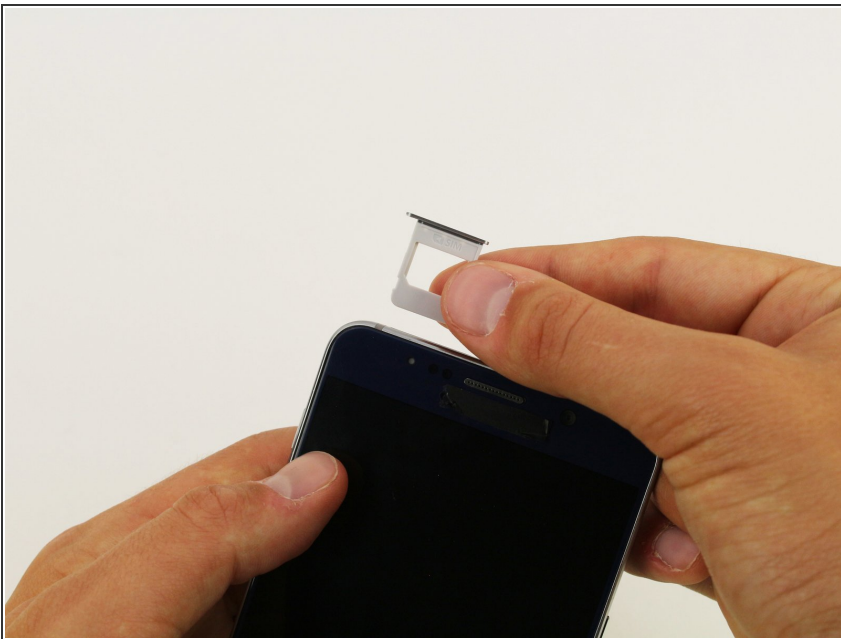
- [SIM Card Eject Tool](#) (1)
  - [Heat Gun](#) (1)
  - [Heavy-Duty Suction Cups \(Pair\)](#) (1)
  - [iFixit Opening Picks set of 6](#) (1)
  - [Phillips #1 Screwdriver](#) (1)
  - [Tweezers](#) (1)
-

## Step 1 — SIM Card Tray



- Insert a SIM Ejector Tool into the small hole on the left side of the top edge of the device.
- Press down until the SIM Card Tray begins to protrude out of the device.

## Step 2



- Remove the SIM Card Tray from the slot.

## Step 3 — Power Button



- Heat the back of the device with a heat gun for 2 minutes

## Step 4



- Once the device is heated, place a suction cup near the bottom of the back of the device. Make sure it is placed on the flat part of the glass.
- ⚠ Be careful holding the device after heating the back, it may burn!
- Gently pull upwards on the suction cup to separate the rear glass from the body of the phone.
- While pulling upwards, insert a pick under the rear glass.

## Step 5



- Keeping the pick under the rear glass, move the pick along the bottom edge of the device to cut the adhesive.

## Step 6



- Repeat the previous heating and cutting procedure for the remaining three sides of the phone.
- Leave a pick on each side as you continue to the next to prevent the adhesive from resealing.

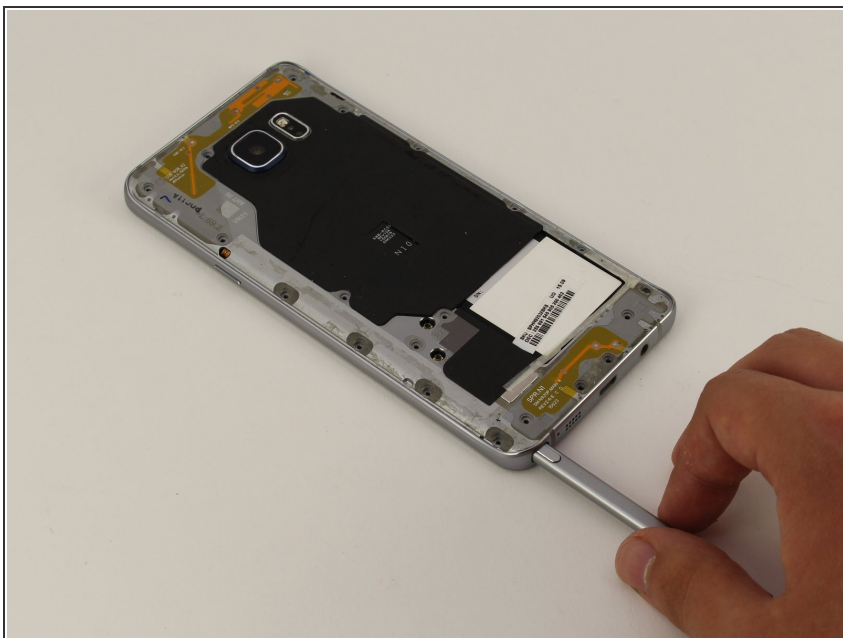


## Step 7



- Once all adhesive has been cut, gently lift up the rear glass to remove it.

## Step 8



- Remove the S-Pen from the bottom of the device

## Step 9



- Remove 20 5mm screws with a Phillips #1 Screwdriver.

## Step 10



- Grip the back of the device and press down on the white square to remove the middle housing.

## Step 11



- Loosen the power button flex adhesive by holding it with the tweezers.
- With the tweezers, pry up and remove the power button flex

## Step 12



- Push out the power button with the tip of the tweezers.



To reassemble your device, follow these instructions in reverse order.