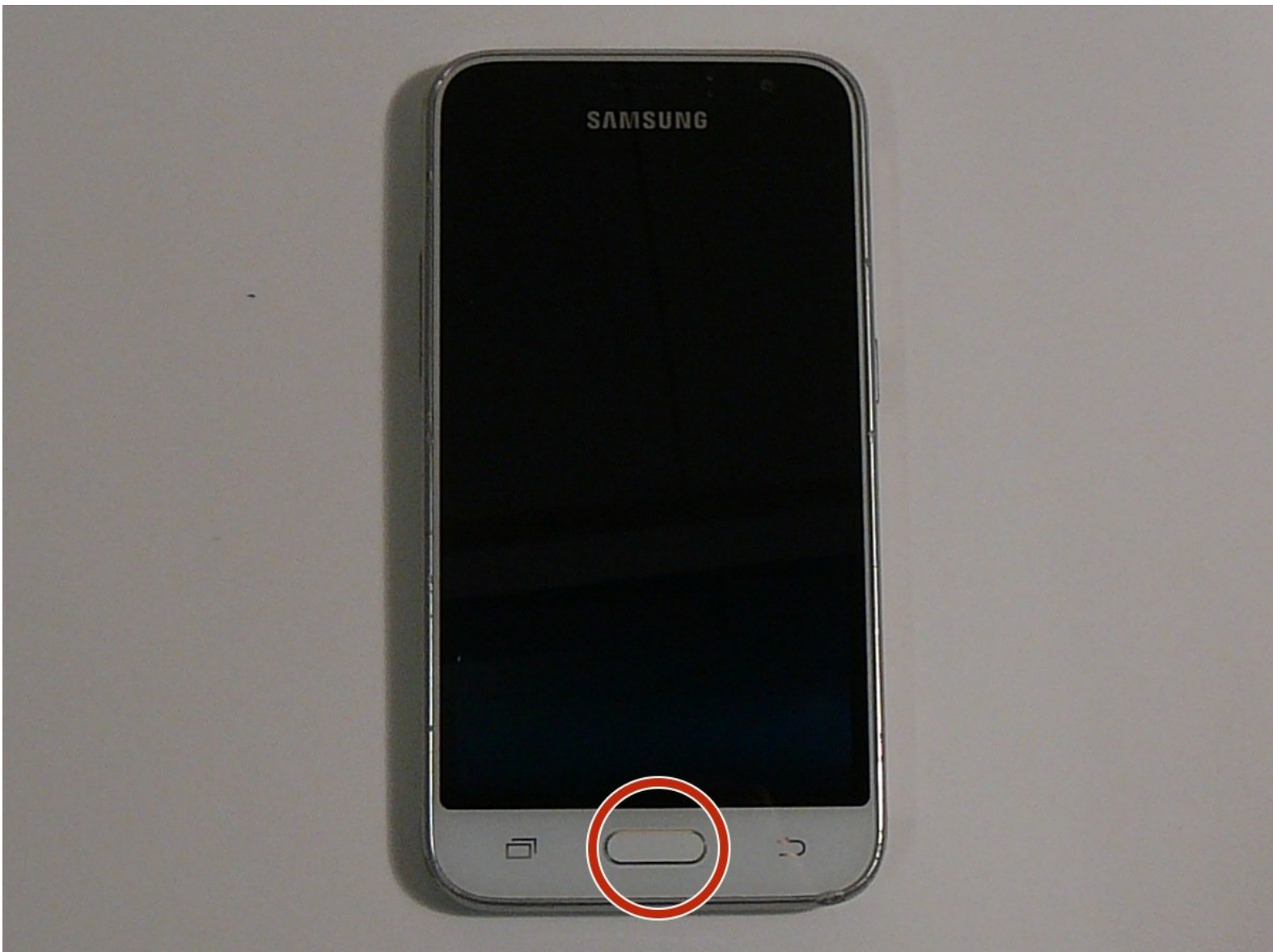




Samsung Galaxy Express 3 Home Button Replacement

How to replace the home button.

Written By: Mack Johnson



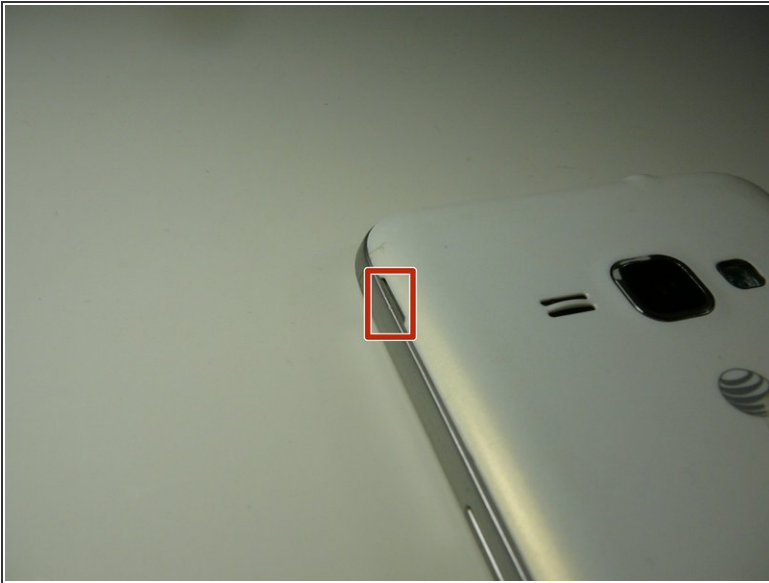
INTRODUCTION

Don't panic if your home button brakes; just follow this guide to replace it. You will have to remove the screen.

TOOLS:

- [Spudger](#) (1)
 - [Hair Dryer](#) (1)
 - [Heat Pad](#) (1)
 - [iFixit Opening Picks \(Set of 6\)](#) (1)
 - [iFixit Opening Tool](#) (1)
 - [Phillips #0 Screwdriver](#) (1)
-

Step 1 — Battery



- Locate the indent area highlighted in red and use either your fingernail or a Prying Tool (such as a guitar pick) to separate the back from the body of the phone.

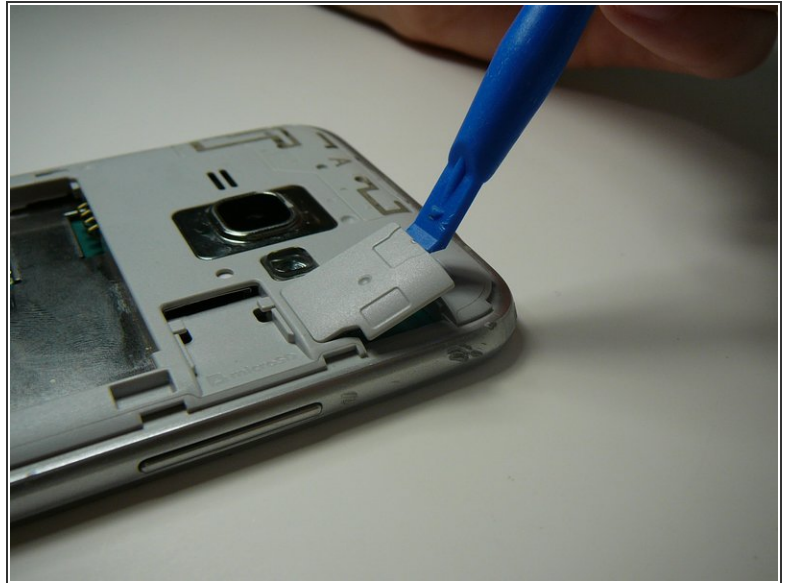
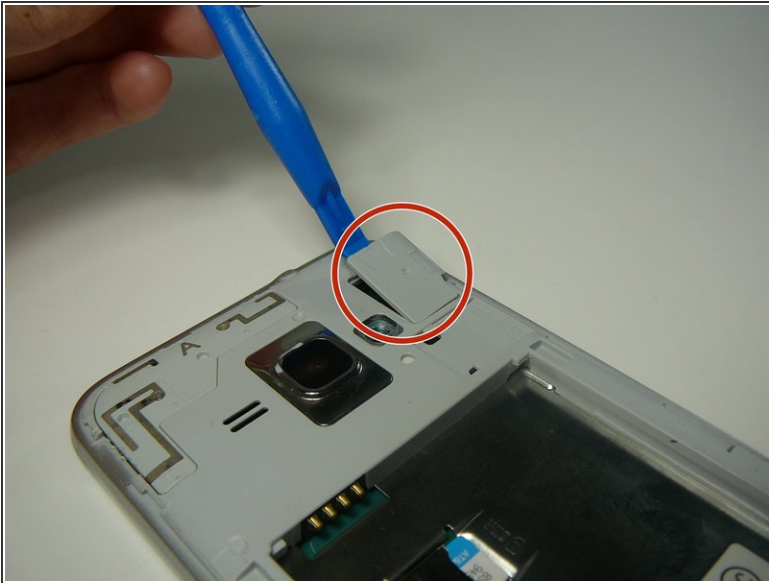
Step 2



- Once the cover is removed, locate the battery that reads "SAMSUNG."
- Use either your fingernail or a Plastic Prying Tool (such as a guitar pick) to lift up the bottom indent of the battery.

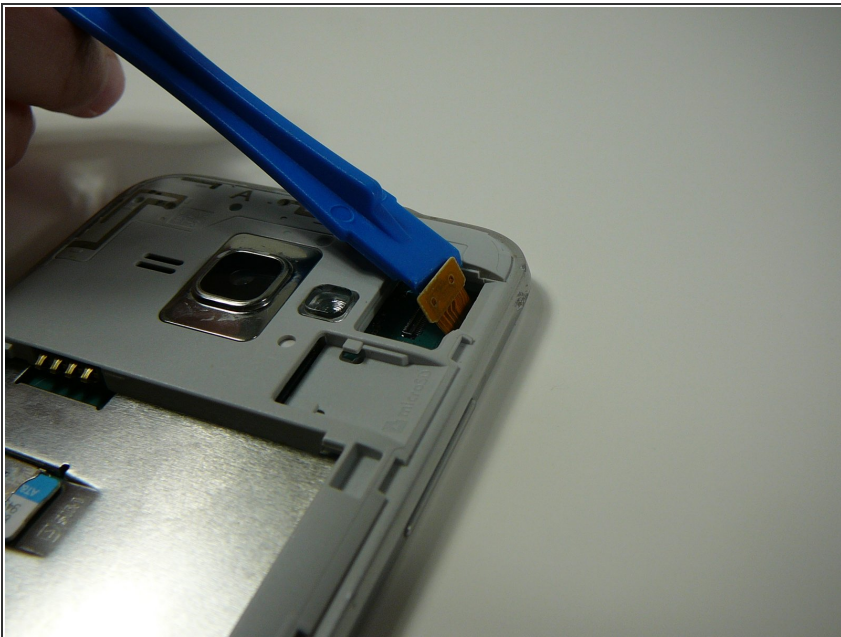
⚠ Do not use a metal tool, as it can cause injury.

Step 3 — Screen



- Use a Plastic Prying Tool (such as a spudger) to pop out piece shown.

Step 4



- Detach the screen connector.

Step 5



- Use a blow dryer or heating pad to heat up the screen.

⚠ Do not skip this step, as it may result in a broken screen and/or LCD.

- ⓘ This step loosens the glue holding the screen in place.

Step 6

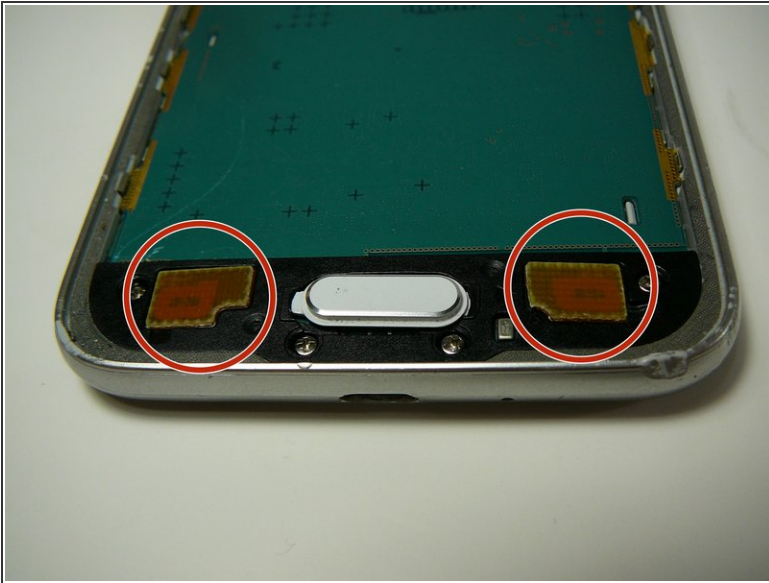


- Use a Thin Plastic Tool (such as a guitar pick) or Plastic Prying Tool (such as a spudger) to lift out the glass digitizer and LCD screen around the edges.

- ⓘ Do this slowly and carefully, as both parts can crack very easily.

⚠ Ensure your tool is plastic, as a metal tool can damage the screen easily.

Step 7 — Back and Recent Apps Touch Sensor Button(s)




- Use a plastic tool to remove back and/or recent tabs circuit buttons.
- ⓘ Use a plastic tool as a metal tool can be dangerous to the phone or you.

Step 8 — Home Button



- Use a #0 Phillips bit screwdriver to remove the four screws from the black, plastic piece surrounding the home button.

 All four screws are the same size.

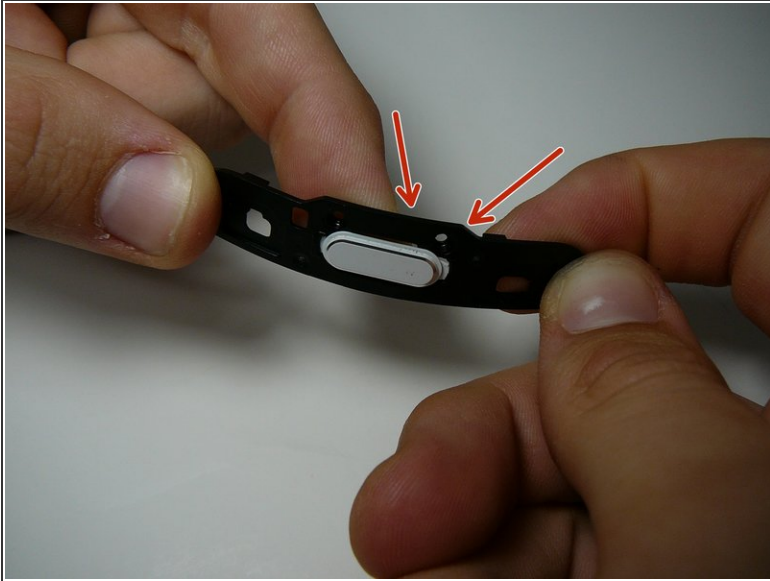
Step 9



- Using a sharp plastic tool such as a guitar pick or prying tool to pop up and remove the black, plastic piece.

 Do not use a metal tool as it can be dangerous to you or the motherboard.

Step 10



- The white button will be connected to the black piece.
- Slightly bend the black piece and gently push the white button until it pops out of the black, plastic piece.

To reassemble your device, follow these instructions in reverse order.