



Moto Z Battery Replacement

Prereq only. Dropped into existing guide. This...

Written By: Arthur Shi



INTRODUCTION

Prereq only. Dropped into existing guide.

This guide shows how to open the Motorola Moto Z in order to replace an old or dead battery.

Before you begin, **discharge your battery below 25%**. A charged lithium-ion battery can catch fire and/or explode if accidentally punctured.

If your battery is swollen, do not heat your phone. If needed, you can use a dropper or syringe to inject isopropyl alcohol (90+%) around the edges of the back cover to weaken the adhesive. Swollen batteries can be very dangerous, so wear eye protection and exercise due caution, or take it to a professional if you're not sure how to proceed.

The display assembly is extremely fragile and has no reinforcement. Work slowly and methodically when handling the display assembly.



TOOLS:

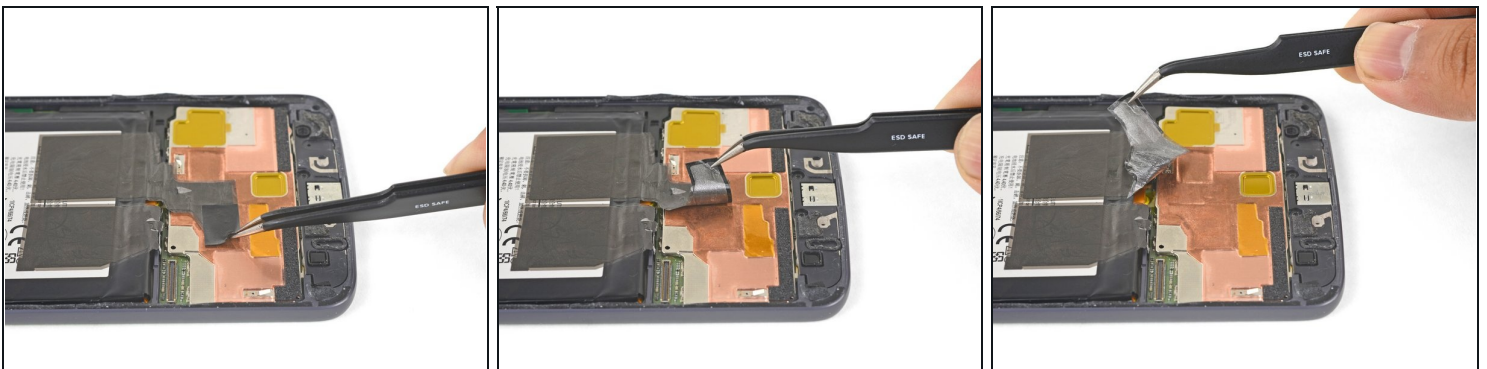
[iOpener](#) (1)
[Suction Handle](#) (1)
[iFixit Opening Picks \(Set of 6\)](#) (1)
[Spudger](#) (1)
[Tweezers](#) (1)



PARTS:

[Moto Z Battery - Genuine](#) (1)

Step 1 — Battery



- Use [tweezers](#) to peel the black tape securing the battery to the frame.
 - ⓘ If your replacement battery did not come with this piece of tape, transfer it from the old battery to the replacement battery.

Step 2



- Lay a [heated iOpener](#) on the back of the phone as shown for as least 90 seconds.

Step 3



- Using a pair of tweezers or your fingers, grab the black battery pull tab and slowly pull it upwards until the corner is loose.

⚠ Do not fully remove the battery as it is still connected by a flex cable.

Step 4



① Follow this step only if your battery tab has broken. Otherwise, skip to the next step.

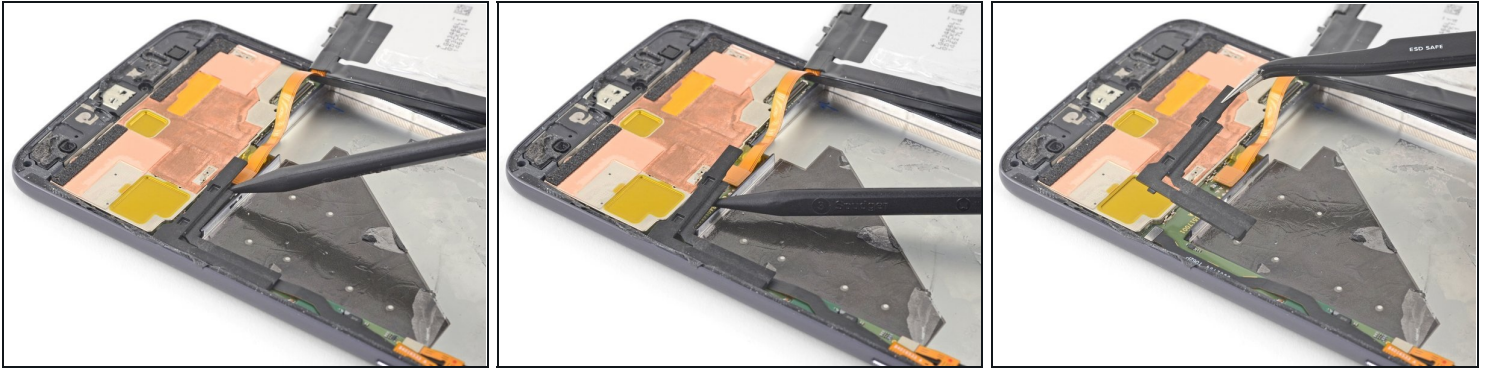
- Insert a spudger into the bottom edge of the battery and slowly pry the corner up.

Step 5



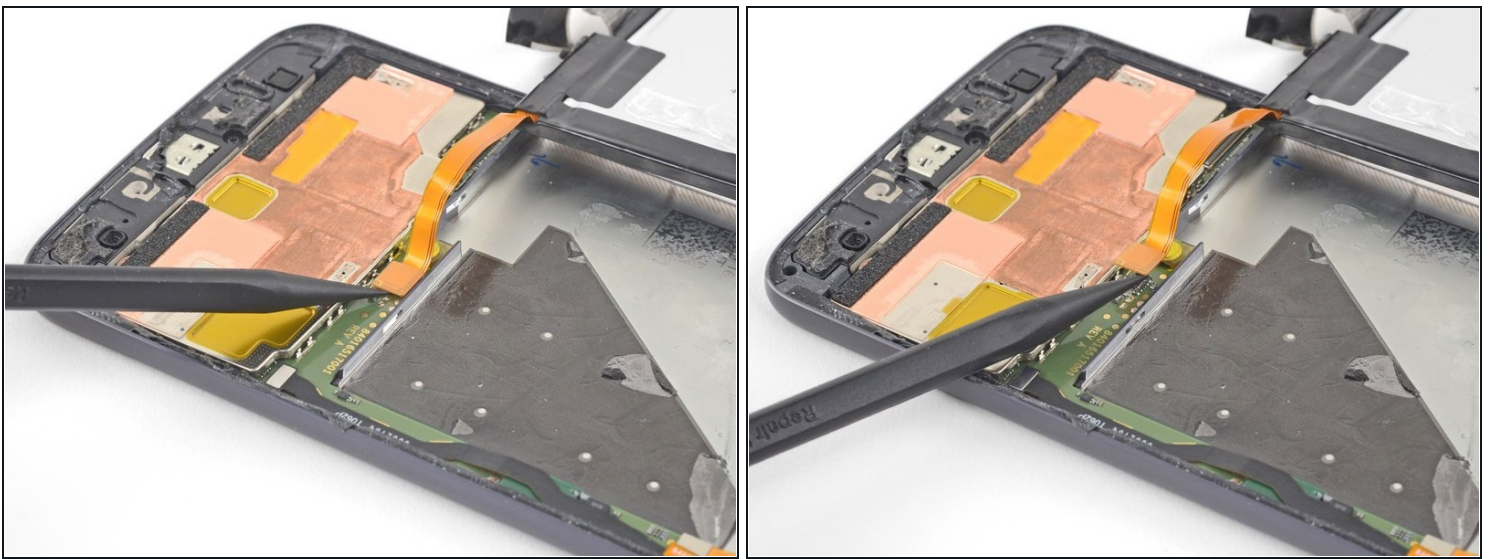
- Carefully swing the battery towards the right edge.
- Lay the battery flat against the work surface while taking care not to strain the battery cable.

Step 6



- Use the point of a spudger to pry up the battery connector bracket.
 - ① The bracket is held in place by some adhesive and tabs.
- Remove the battery connector bracket.
 - ★ When you reinstall the bracket, make sure to align the tabs on the bracket with [the indents](#) on the left edge of the frame.

Step 7



- Using the point of a spudger, pry up the battery connector from its socket.

Step 8



- Remove the battery.

⚠ Do not reuse the battery after it has been removed, as doing so is a potential safety hazard. Replace it with a new battery.

★ To install a new battery:

- Remove any remaining adhesive from the phone, and clean the glued areas with isopropyl alcohol and a lint-free cloth.
- Apply [pre-cut adhesive strips](#) or [double-sided tape](#) to the exposed, silver part of the battery compartment, not on the black foam layer.
- Press the battery firmly into place for 5-10 seconds.

Compare your new replacement part to the original part. You may need to transfer remaining components or remove adhesive backings from the new part before installing.

To reassemble your device, follow these instructions in reverse order.

For optimal performance, calibrate your newly installed battery: Charge it to 100% and keep charging it for at least 2 more hours. Then use your device until it shuts off due to low battery. Finally, charge it uninterrupted to 100%.

Take your e-waste to an [R2 or e-Stewards certified recycler](#).

Repair didn't go as planned? Try some [basic troubleshooting](#), or ask our [Motorola Moto Z Answers community](#) for troubleshooting help.