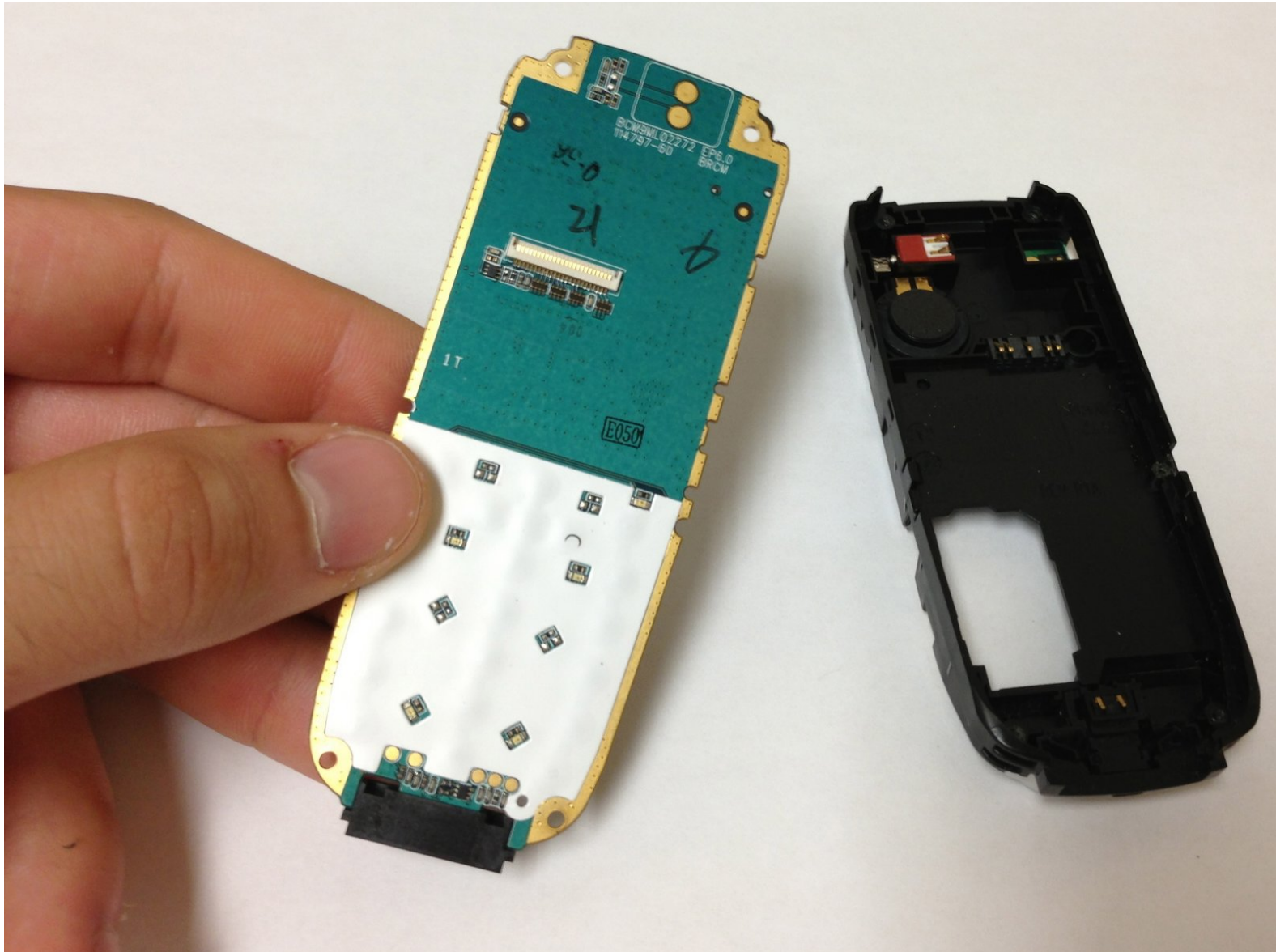




# Sony Ericsson J220i Charging Port Replacement

Removing and/or replacing the charging port on the Sony Ericsson J220i.

Written By: James Au



---

## INTRODUCTION

This guide will show the user how to disassemble a Sony Ericsson J220i with the intent of removing and replacing the charging port.




### TOOLS:

- [T5 Torx Screwdriver](#) (1)
-

## Step 1 — Battery



 Before disassembling the phone, make sure the phone is powered off.

## Step 2



- Flip to the back of the phone and locate the black button on the top of the phone.

### Step 3



- Firmly hold down the black button on the top of the phone and gently snap off the back cover.

### Step 4



- Remove the battery by wedging it out from the back.



## Step 5 — Keypad



- Flip to the front of the phone and apply pressure to the front frame of the phone. The frame should snap off easily.

## Step 6



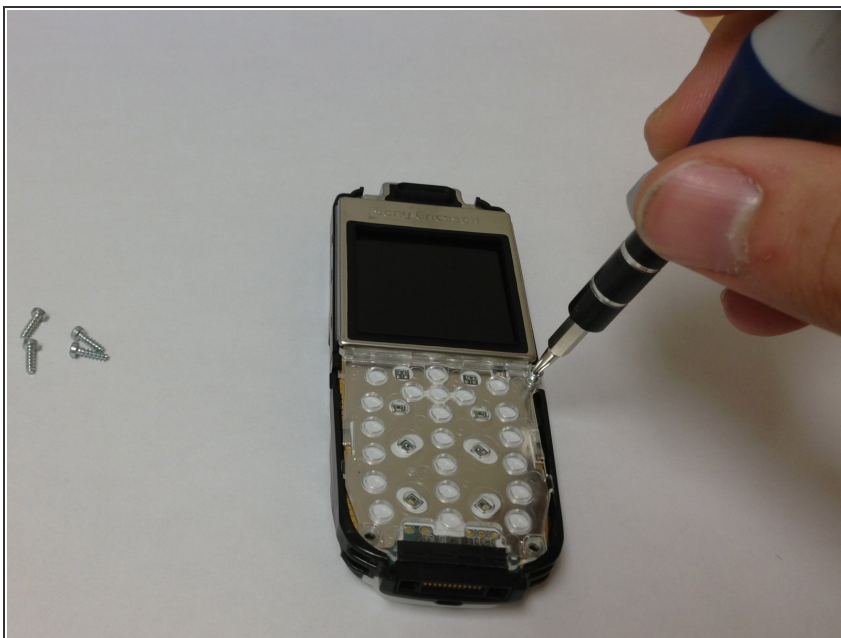
- Remove the keypad by gently pulling it from the front of the phone.

## Step 7 — Screen



- Locate the five screws indicated on the phone.

## Step 8



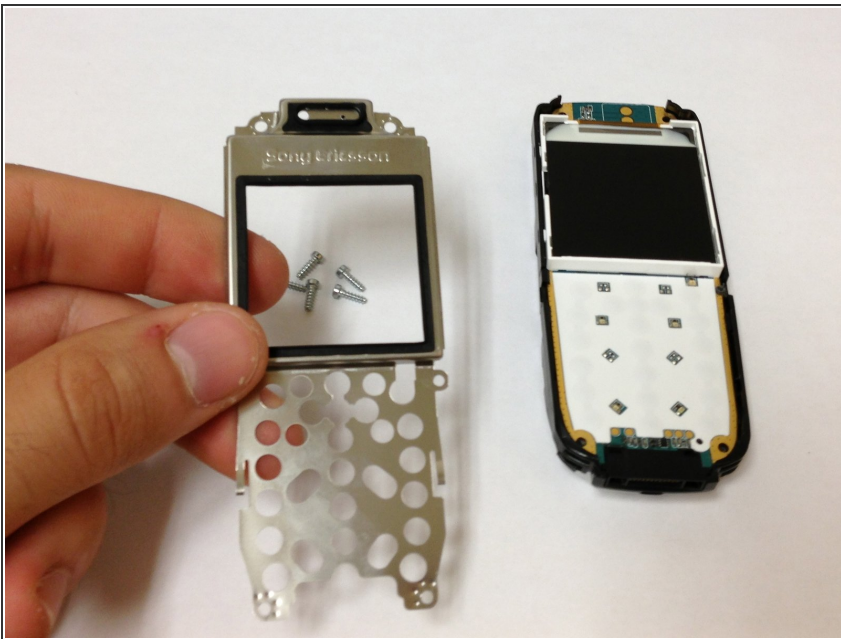
- Use a T5 Screwdriver and unscrew the five screws.

## Step 9



- Once the screws are off, there should be a plastic cover on top of your screen. Gently slide the plastic cover off.

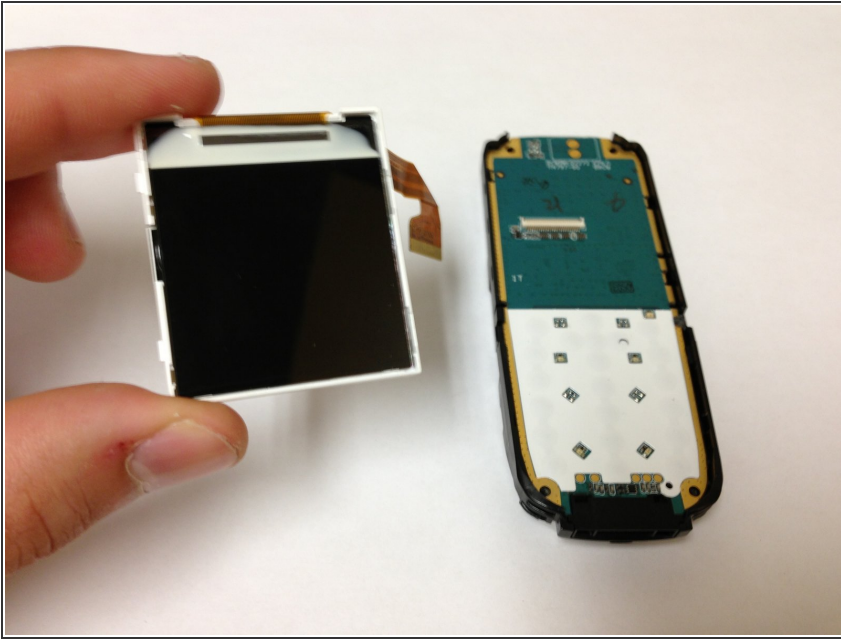
## Step 10



- Now gently pull metal cover off.

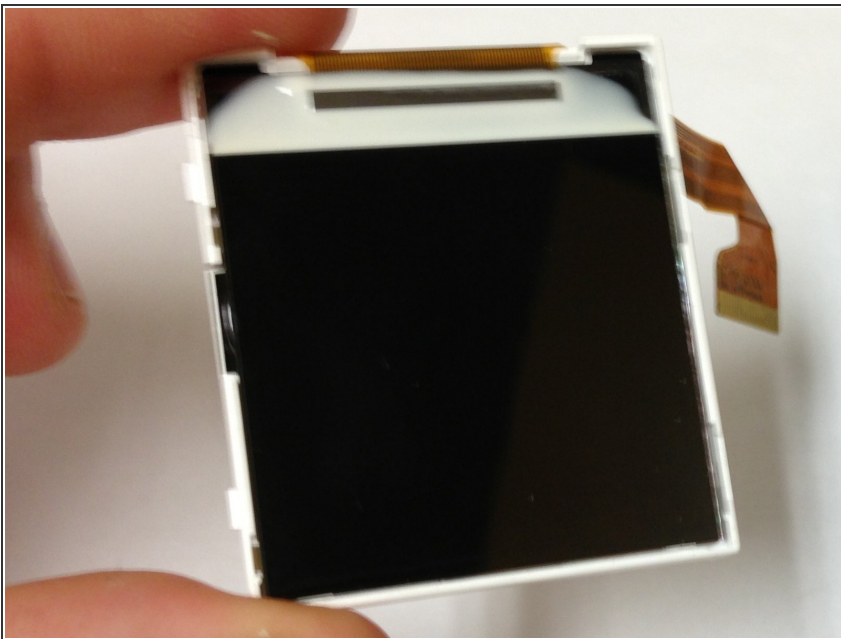


## Step 11



- You should now see the screen on the front side of the phone. Wedge your finger to the side of the phone. Apply some force to pop out the screen.

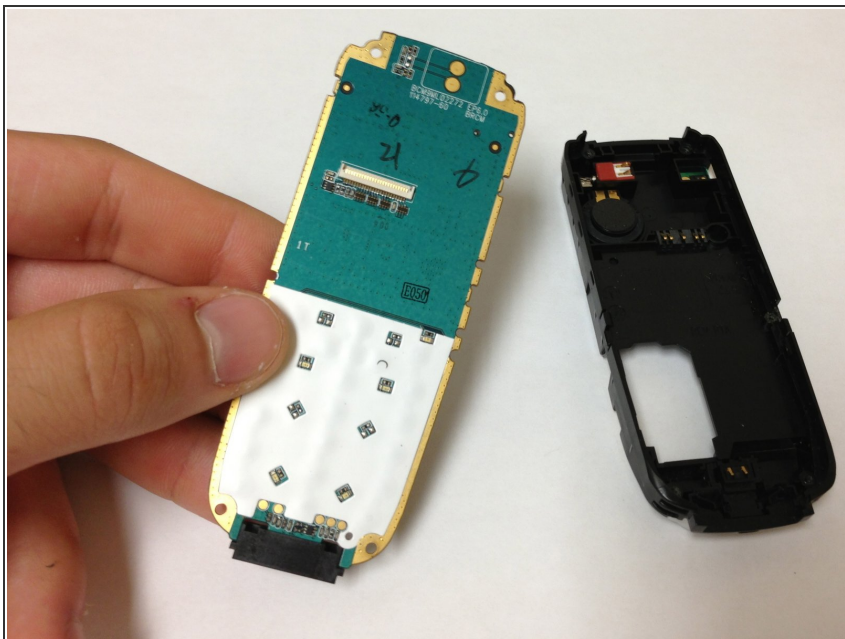
## Step 12



- Now that screen is removed, replace the old screen with the new screen.
- Reassemble the device by doing the steps in reverse order.

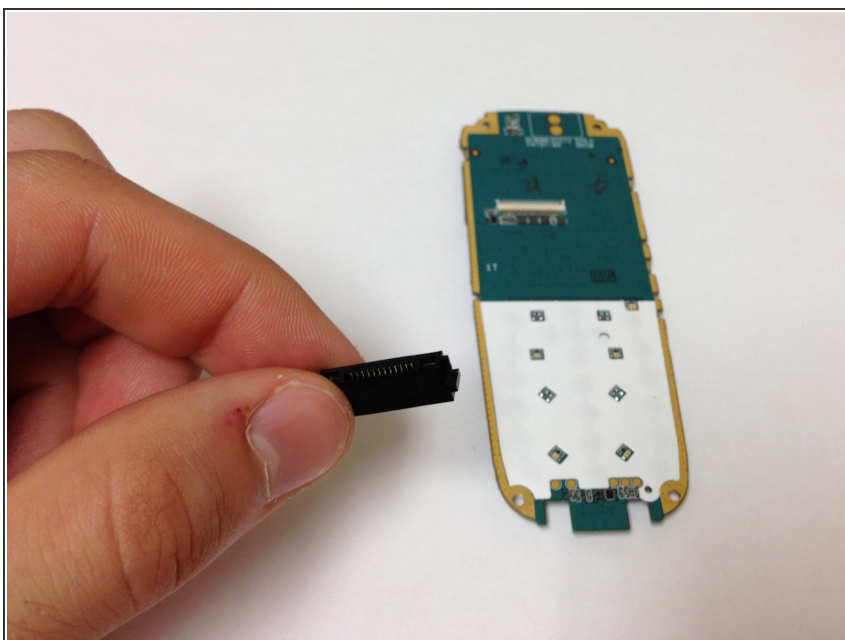


## Step 13 — Charging Port



- After removing the screen, you will find the charging port located at the bottom of the phone.

## Step 14



- Gently slide off the charging port.

To reassemble your device, follow these instructions in reverse order.