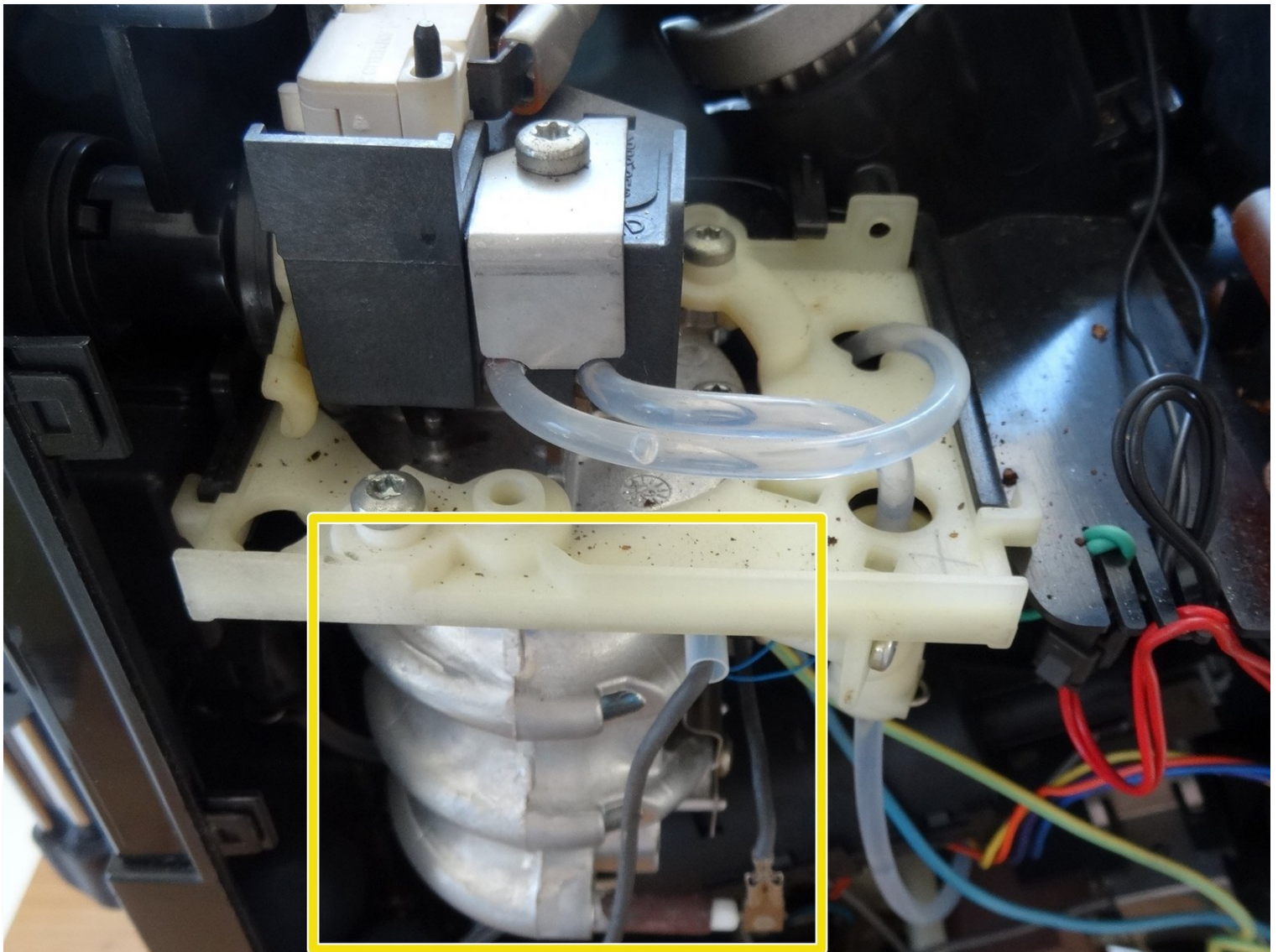




# Jura heating cartridge replacement

Many models of Jura, Krups or AEG coffee makers...

Written By: VauWeh



# INTRODUCTION

Many models of Jura, Krups or AEG coffee makers have installed this heating cartridge. If your device is equipped with the newer "thermoblock" use this link [Anleitung](#).

## TOOLS:

[iFixit Precision 4 mm Screwdriver Bit](#) (1)  
[T15 Torx Screwdriver](#) (1)  
[Phillips #2 Screwdriver](#) (1)  
[Large Needle Nose Pliers](#) (1)

## PARTS:

[O-rings](#) (1)  
[Boiler](#) (1)  
<https://www.juraprofi.de/Jura-Ersatzteile/Erhitzer-Thermoblock/Jura-Heizpatrone-inkl-Ventil-alen-Schlaeuchen-Dichtungen-und-Einbauanleitung-Neuware::6165.html>

## Step 1 — Jura Impressa Type C E F opening procedure

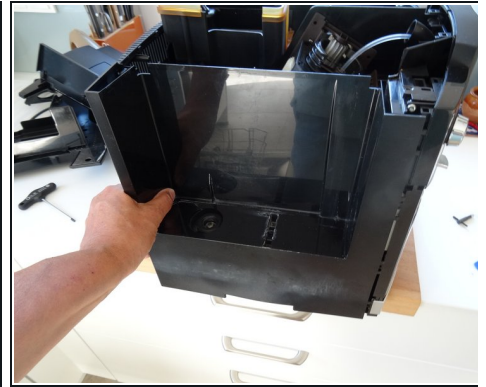


- The instructions are suitable for nearly every model of Jura and similar ones e.g. AEG and Krups.

 **Unplug!**

- Remove the water reservoir.

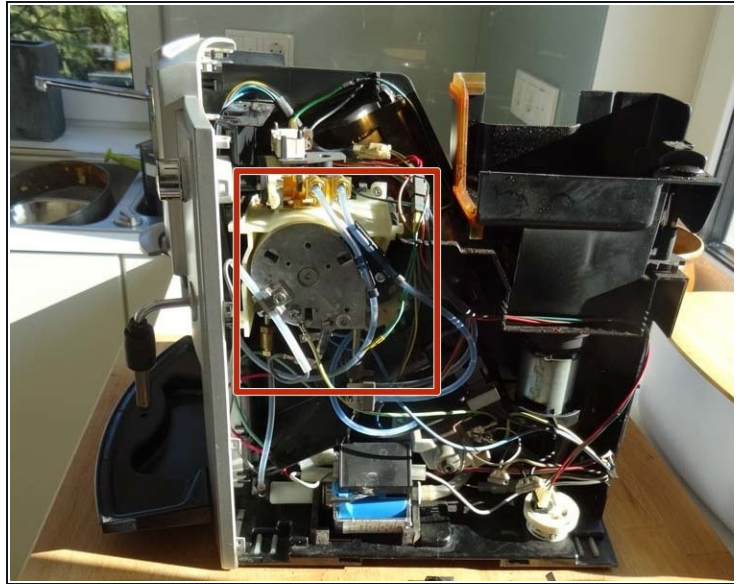
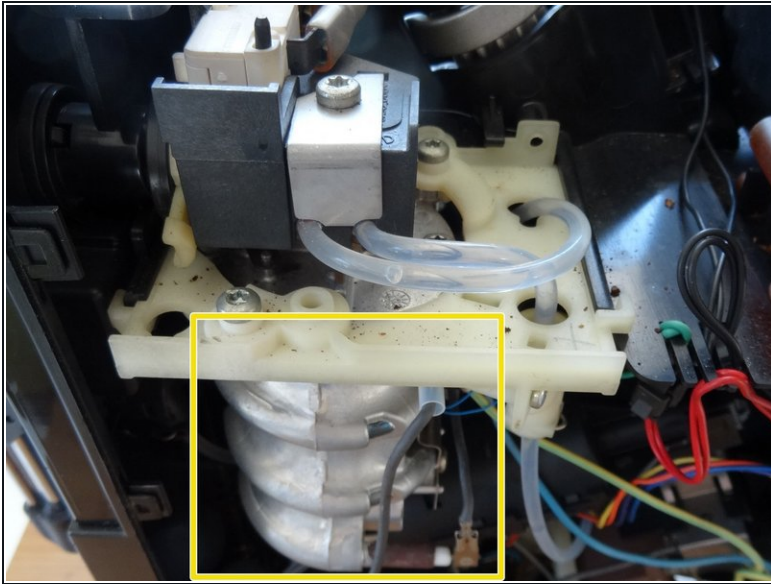
## Step 2



- ① On the rear side is an obstacle: four "oval head screws" looking like rivets. You can remove them using a special oval drive bit. They are sold at iFixit with the tool kits as well as some Jura suppliers or somewhere in the internet. Jura wants to keep us out of our own machines!
- Using an oval head bit you can screw them out. If you haven't got one you can carefully use pliers. It is a good idea to later change the screws for normal ones.
- ① You can even create your own [specialty tool](#)
- Beneath both top side covers are two Torx T15 screws. Remove those. Now lift off the whole top cover. Sometimes it jams and you have to use a bit of force.
- The side covers must be pushed backwards by about 1 cm. Sometimes this is a little bit difficult to move. If necessary, wedge a plastic opening tool into the gap between the side covers and the front panel. The rear cover can be easily removed.

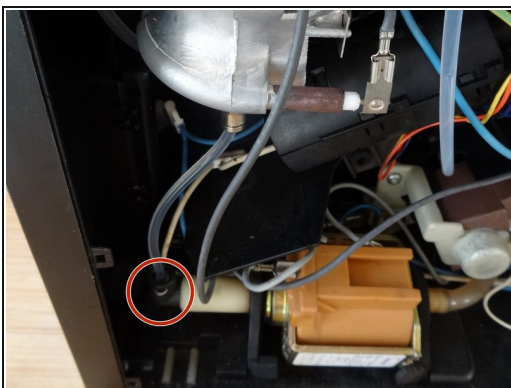


### Step 3 — Heating cartridge



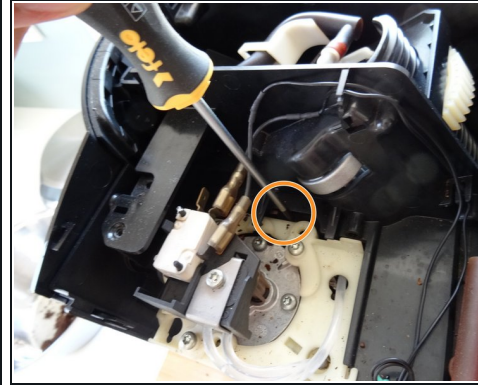
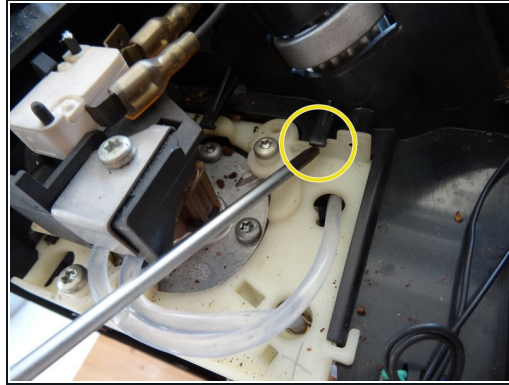
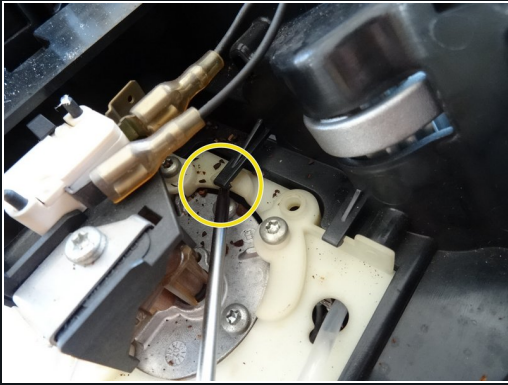
- The heating cartridge is the aluminum cylinder under the right side, around which spirals the heating runs. It is bolted to a plastic slide. The next steps will show how to pull out the slide and remove all connections.
- If the boiler looks like the second picture, it is the thermoblock. There is another guide [here](#).

### Step 4



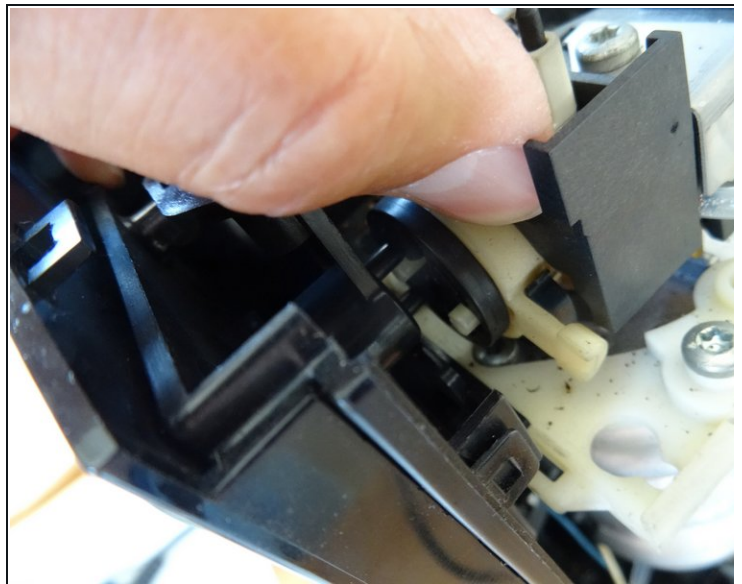
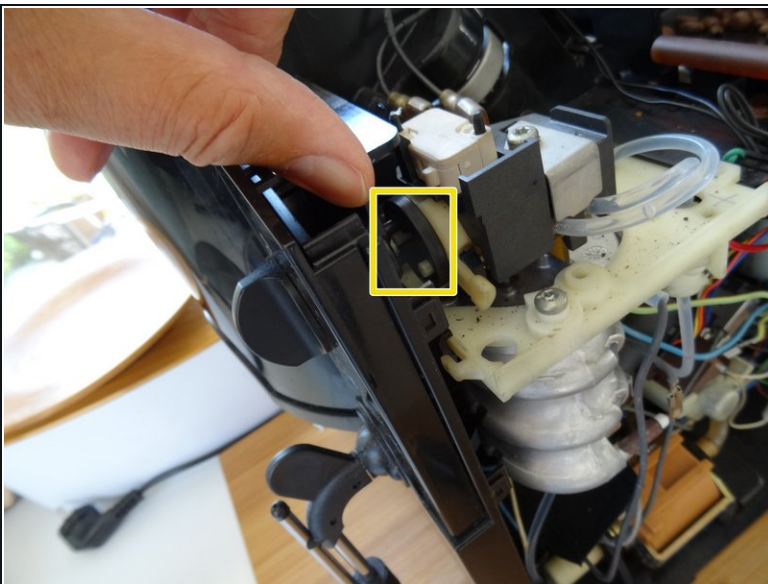
- The pressure hoses are secured against slipping out with metal clips. Pull out the metal clamp on the hose between the pump and the heating cartridge
- Disconnect the hose from the pump. Pay attention to the little seal, it probably lingers afterwards. It is good to replace them with a new one when assembling.

## Step 5



- The carriage of the heating cartridge is held with two black plastic frames. Press it up with a screwdriver until the carriage comes free.
- Put the screwdriver into the gap that has opened behind the carriage and lift the carriage forward about 5 mm.

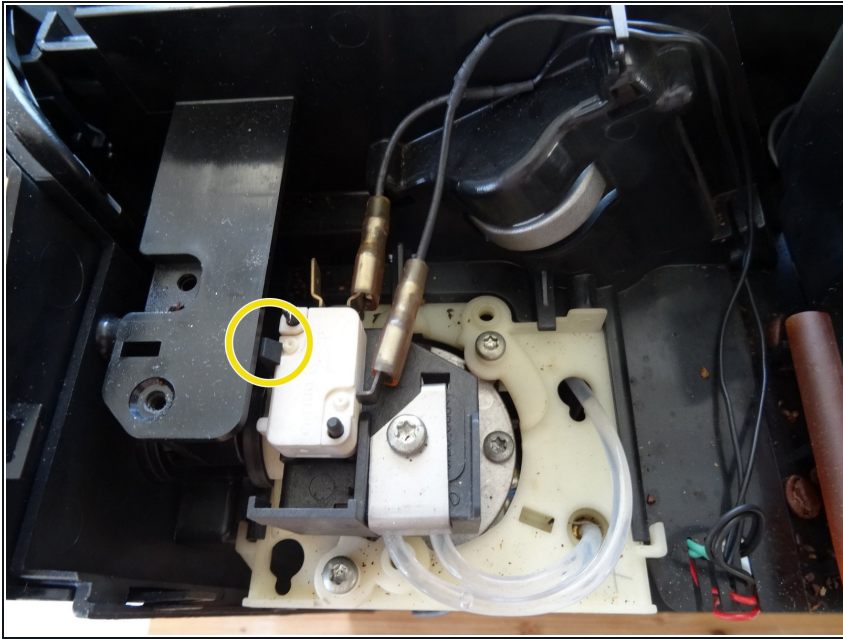
## Step 6



- ① In this step, you must disconnect the connection between the steam knob and the steam valve. The button has two pins stuck in a round plate with a cruciform incision. The steam valve also has two pins which engage in this plate from the other side.
- Pull the front forward about 1 cm until the pins of the knuckle release from the round plate. Then pull out the carriage with the heating cartridge about 2 cm.

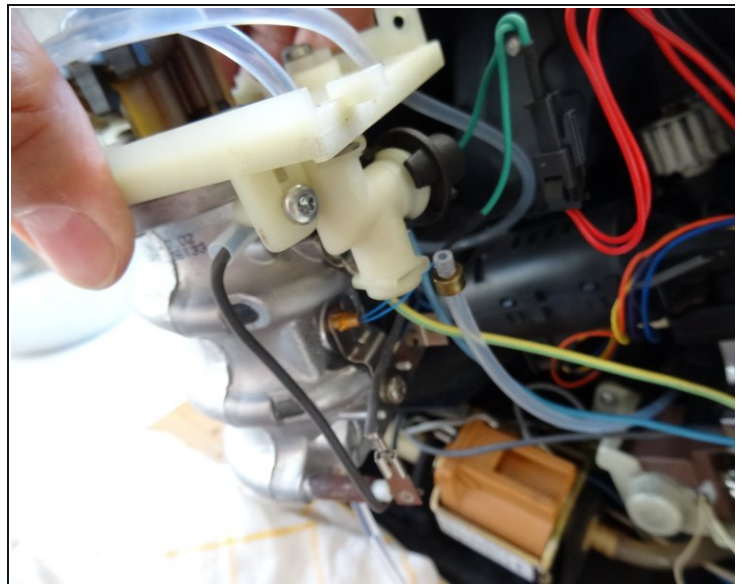
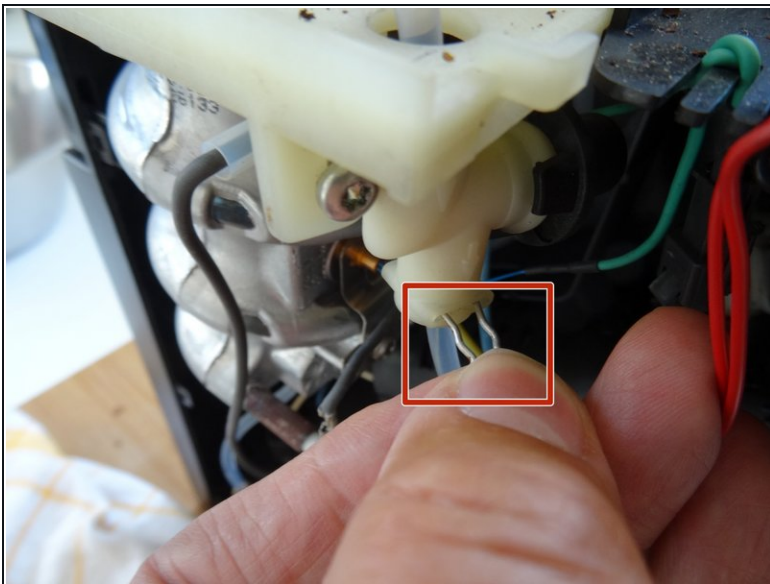


## Step 7



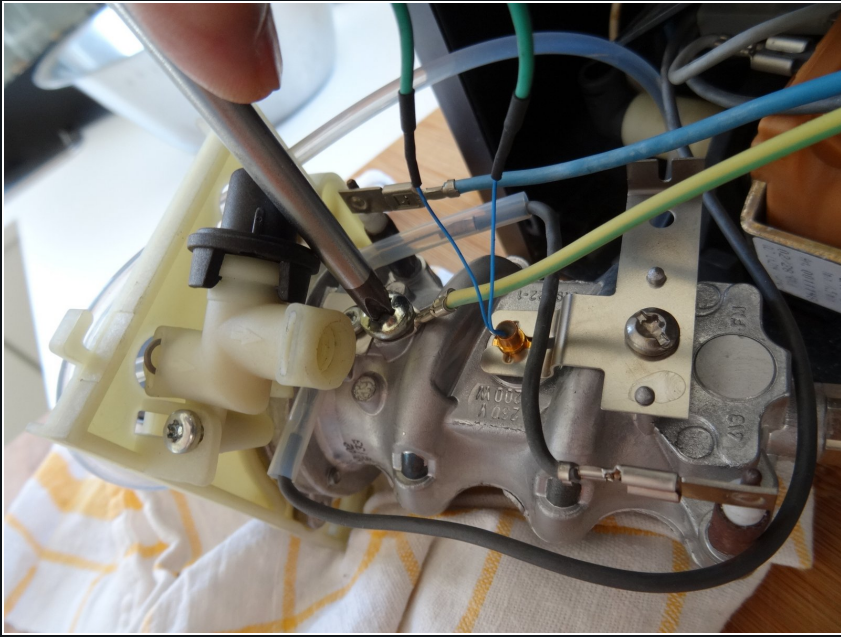
- The microswitch is held in place by a black plastic fabric. Push the catch to the left and lift the microswitch out. The cables can stay connected.

## Step 8



- Pull out the clamp on the pressure hose that comes out of the outlet valve.
- Detach the pressure hose. Watch out for the little seal, it's probably stuck in the valve. It is good to replace them with a new one when assembling.

## Step 9



- Now pull out the carriage with the heating cartridge completely and put it on the work table.

**⚠** The heating cartridge is still connected with different cables. Make sure that no cable is damaged.

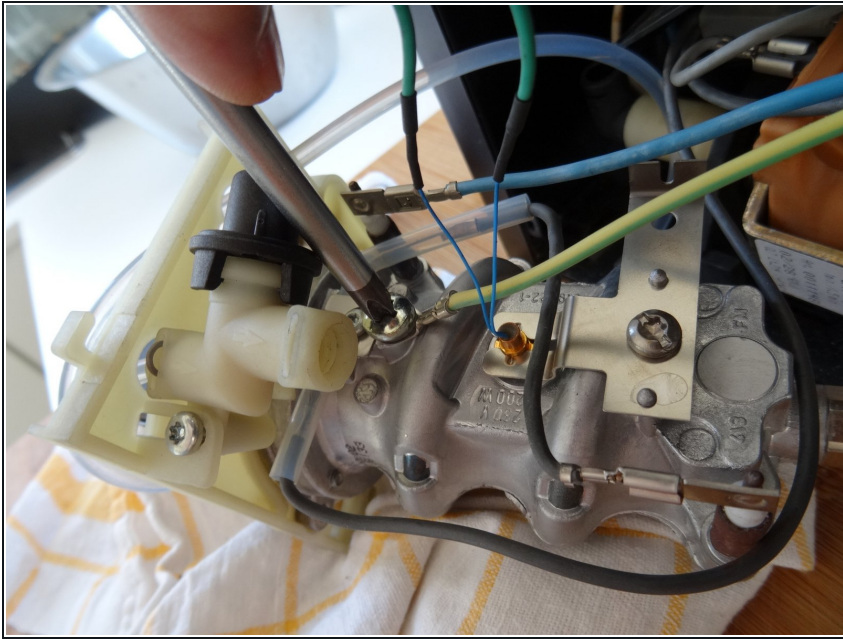
## Step 10



- Pull the clamp on the hose to the steam outlet.
- Carefully pull out the hose. Pay attention to the little seal, it probably lingers afterwards. It is good to replace it with a new one when assembling.
- i** In the next steps you will see how you can solve the connections.

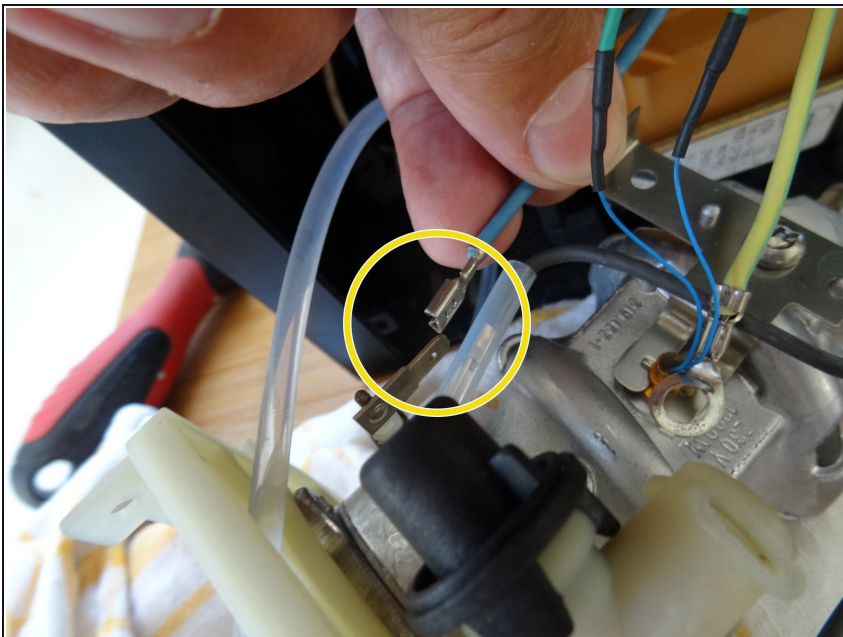


## Step 11



- The yellow-green grounding cable is attached with a Phillips screw. Turn it out and disconnect the cable.

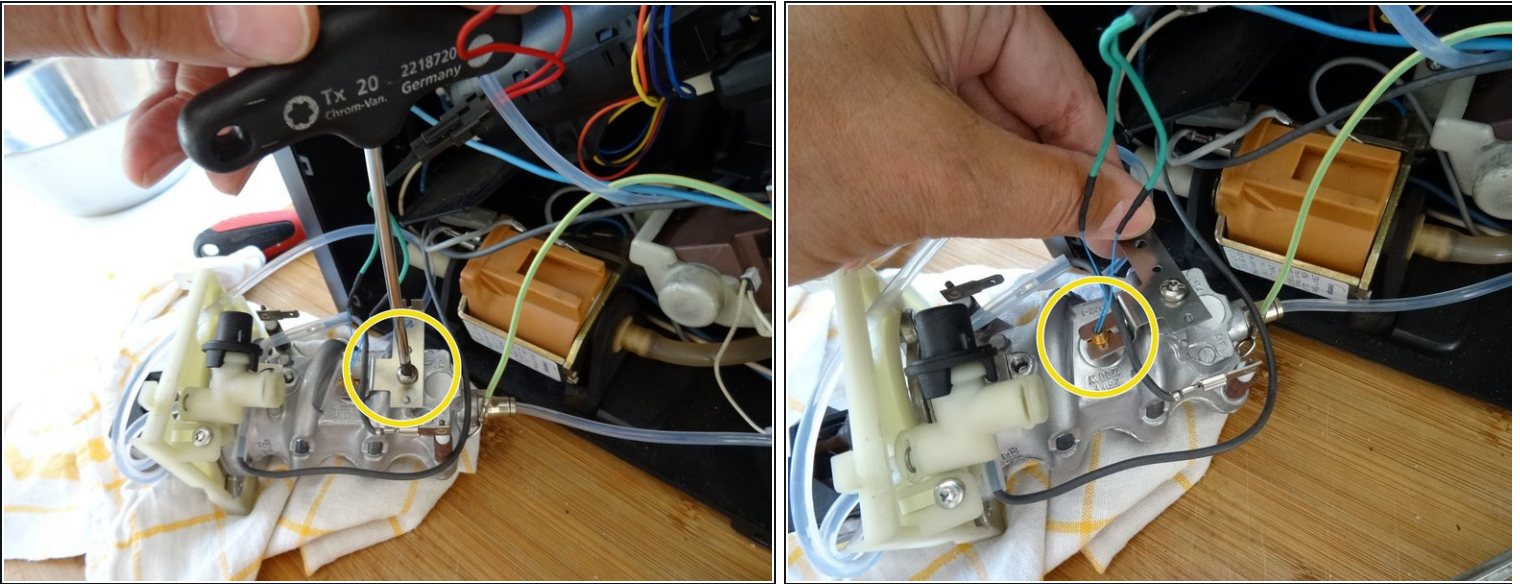
## Step 12



- Remove the cable lug with the blue cable from the heater.

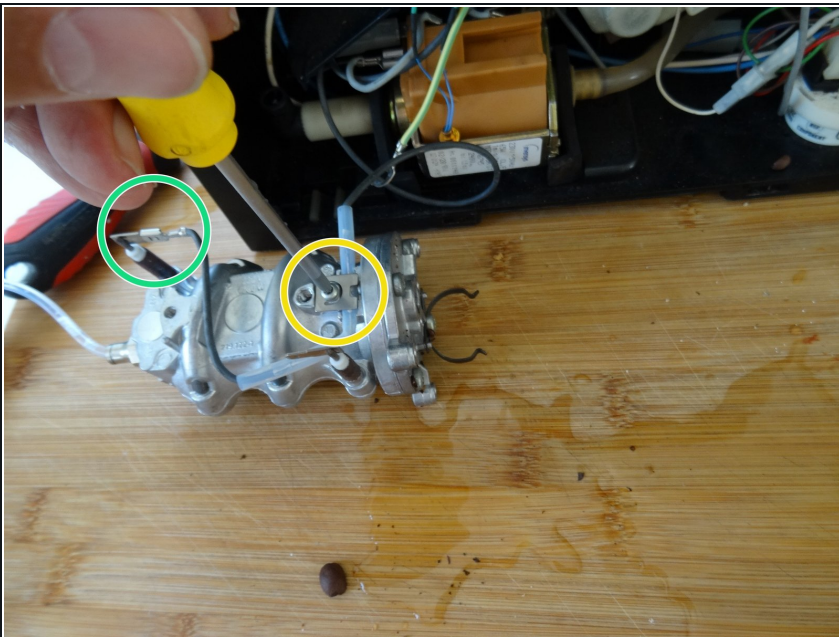


## Step 13



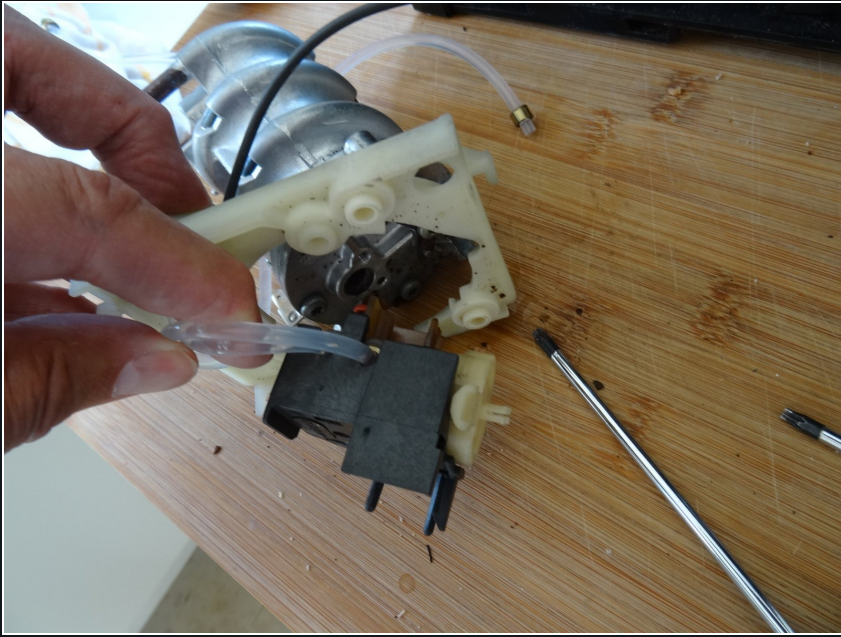
- ① The temperature sensor is fastened with a holding plate and a Torx 20 screw.
- Unscrew the screw, lift the plate with the thermocouple and remove it.

## Step 14



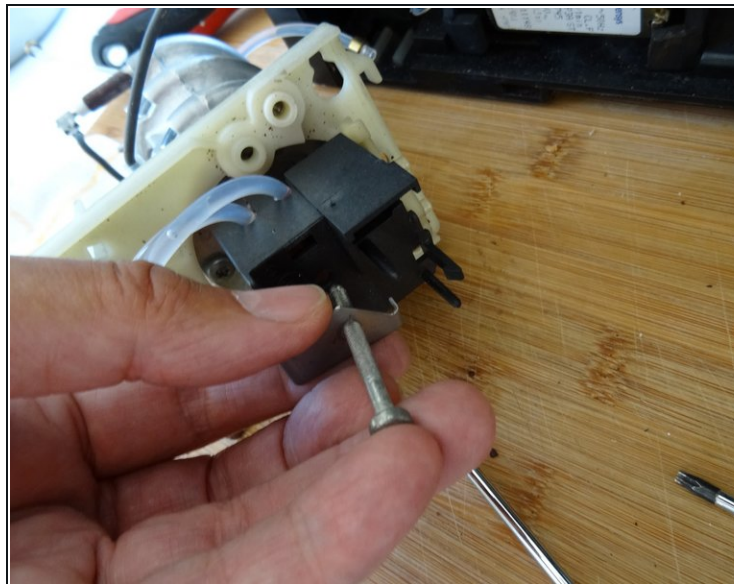
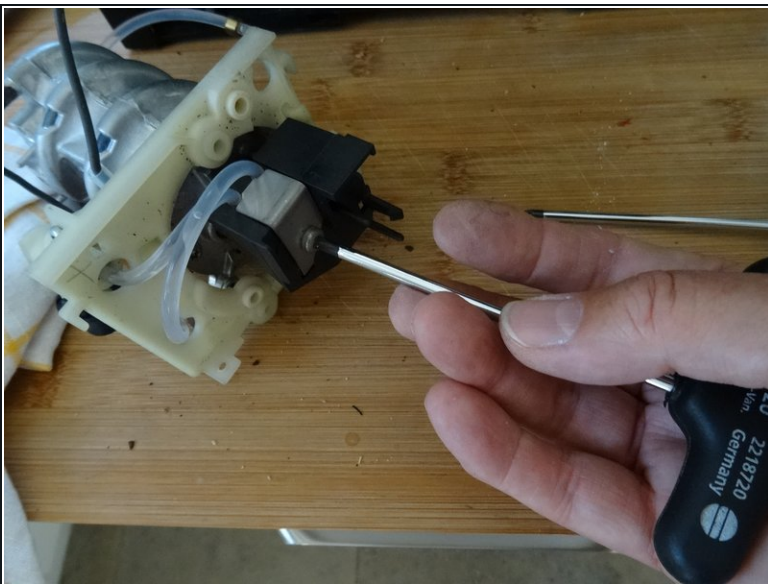
- ① There is a thermal fuse on the gray cable between the heater and the pump. It is attached to the heating cartridge with a retaining plate.
- Loosen the Torx 15 screw on the retaining plate of the thermal fuse.
- Remove the thermal fuse from the thermoblock.
- Disconnect the cable lug from the gray cable on the heater.

## Step 15



- The heating cartridge is free.
- ① Depending on what your replacement part looks like, you'll need to dismantle more components and transfer them to your replacement part. Here are some hints in the next steps.

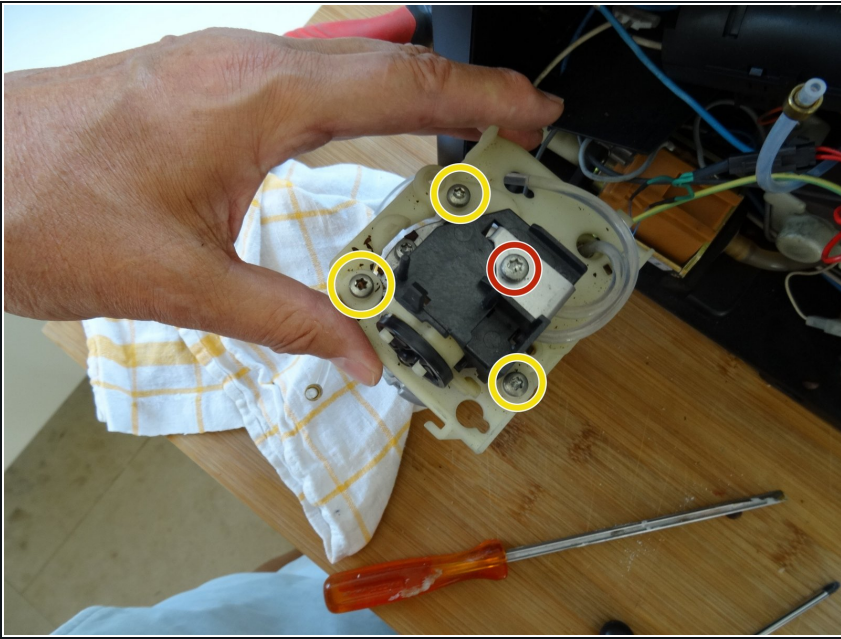
## Step 16



- Turn out the long Torx 20 screw on the top of the steam valve.
- Gently pull off the steam valve.
- ① Between the steam valve and heating cartridge is a sealing ring and a black plastic spacer. You should replace the seal, you can continue to use the spacer ring.

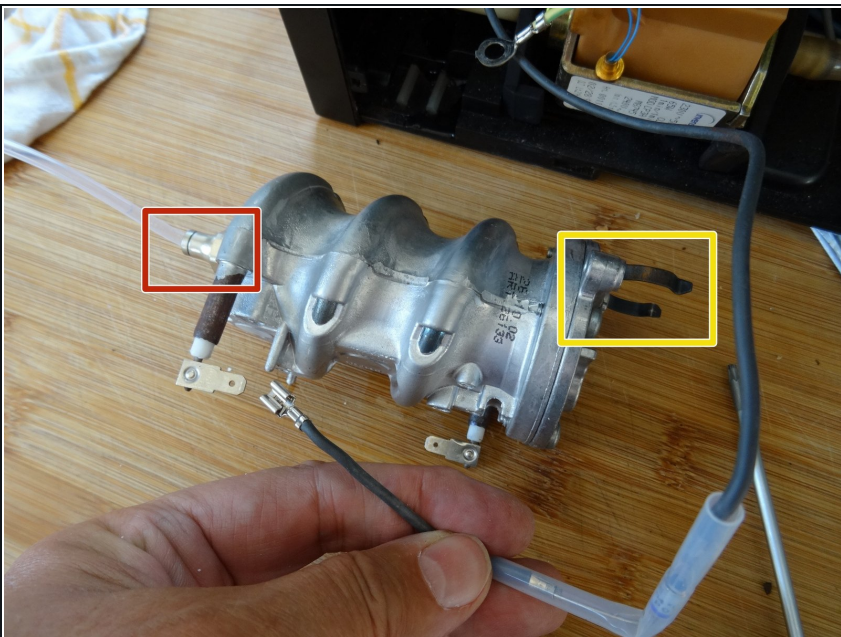


## Step 17



- When the steam valve is removed, you can finally replace the sled. To do this, turn out three Torx 20 screws.
- That's the screw on the steam valve, which you removed in the last step.

## Step 18



- The clamp for the rotary knob on the steam valve is fastened with a Torx 15 screw. Unscrew it, remove the clamp and transfer it to the new part, if necessary.
- The pressure hose is attached to the lower end of the heating cartridge with a Legris connection. Press the pressure hose firmly with your fingers towards the heating cartridge. Now push the small ring at the end of the Legris connection towards the heating cartridge and pull off the pressure hose at the same time.

---

Work the steps in the reverse order to assemble your device again.