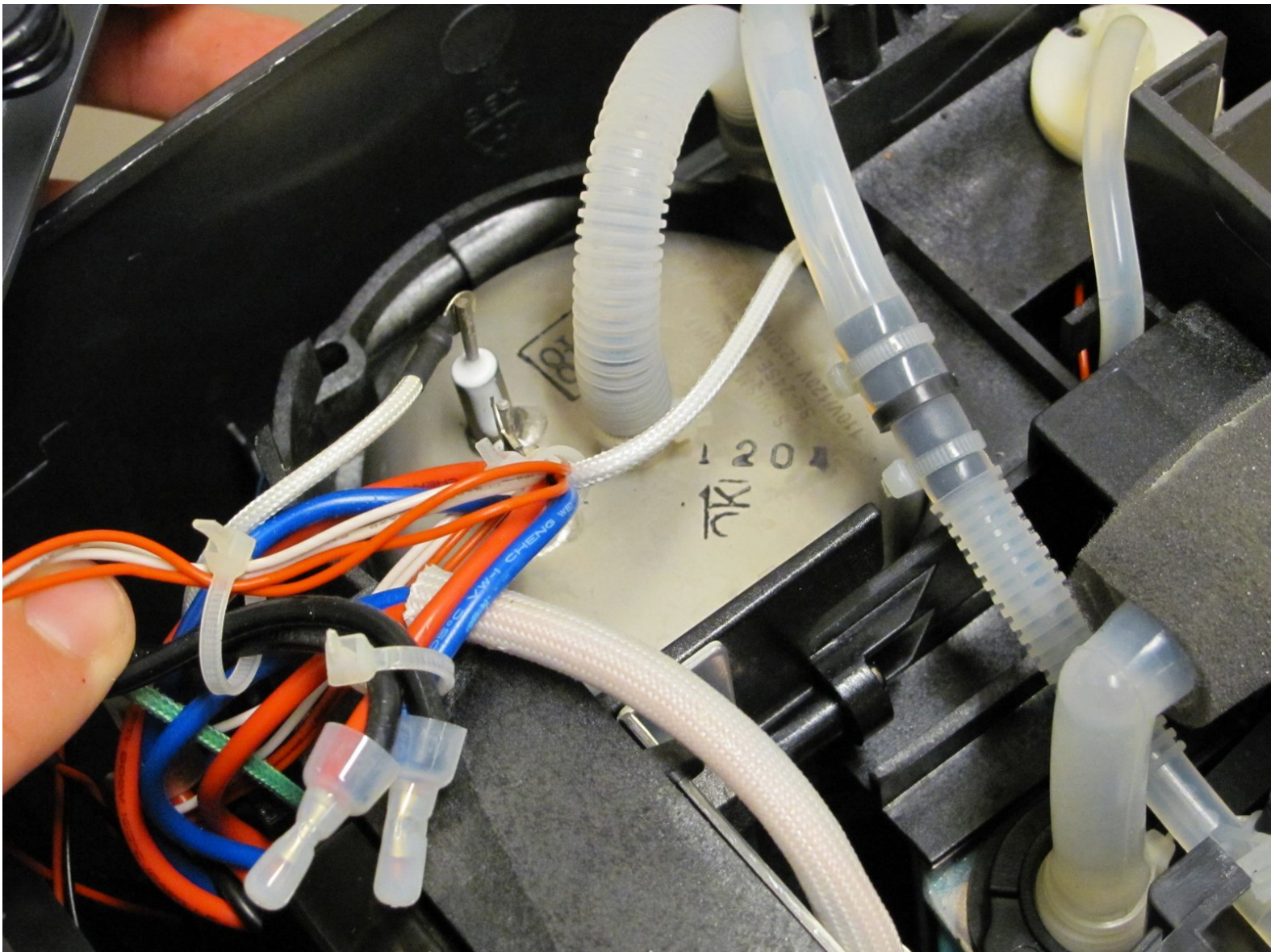




Breville BKC600XL Heating Tank Replacement

Replacing the heating tank should it fail to work.

Written By: Antonio



INTRODUCTION

Replacing the heating tank should it fail to work.



TOOLS:

- [Phillips #0 Screwdriver](#) (1)



PARTS:

- [Breville BKC600XL Heating Tank](#) (1)
- [Tying Band](#) (1)

Step 1 — Bottom Cover #1

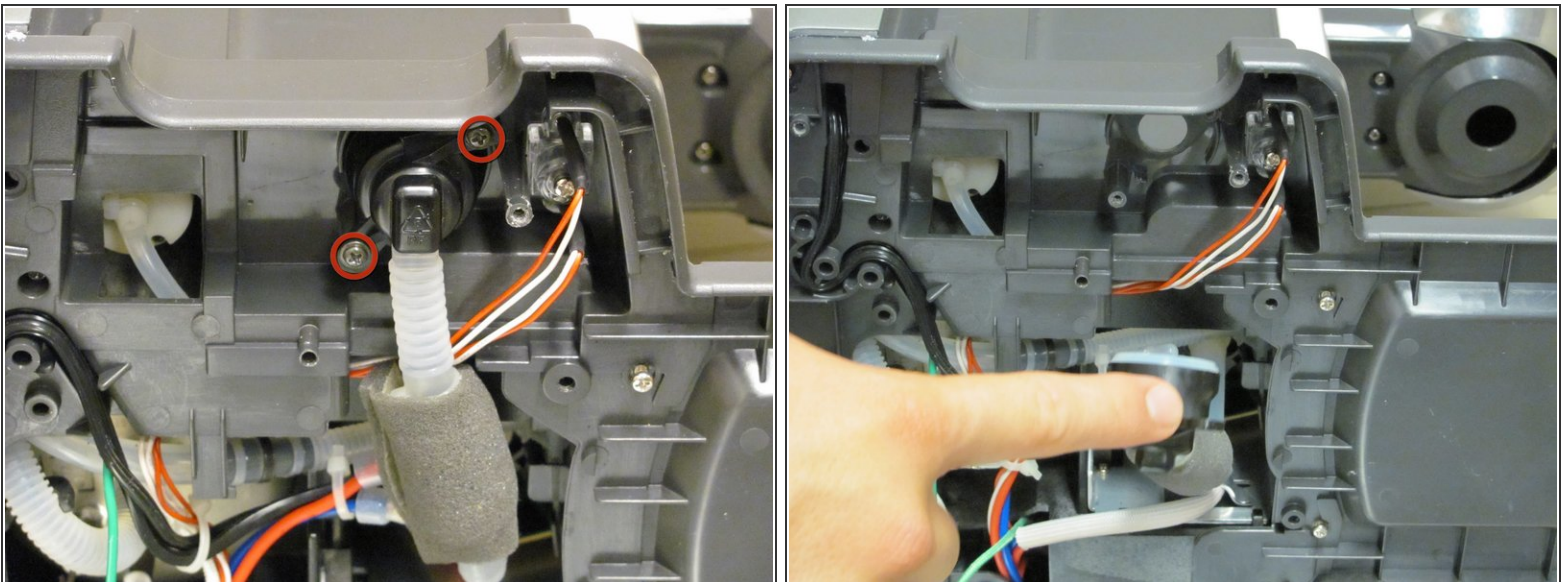


- Use a Phillips #0 screwdriver to remove the following ten screws:

- Four 18mm Phillips screws.
- Four 9.75mm Phillips screws.
- Two 8mm Phillips screws.

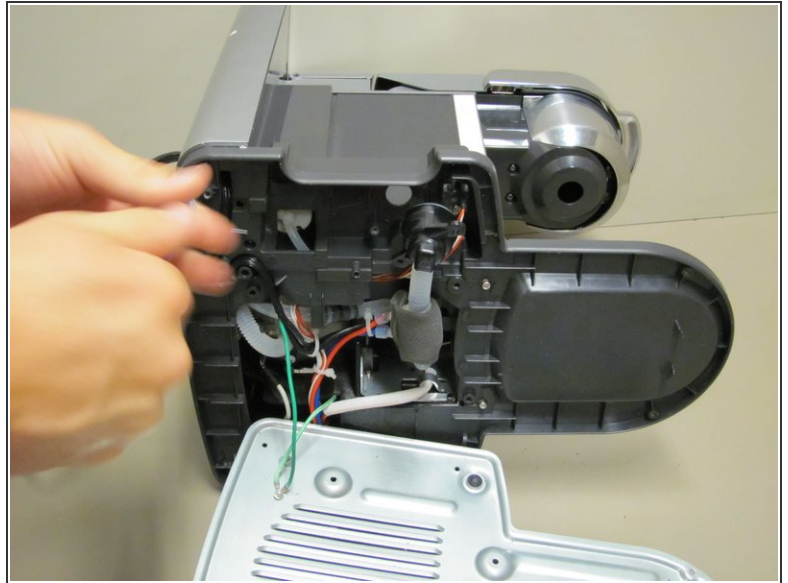
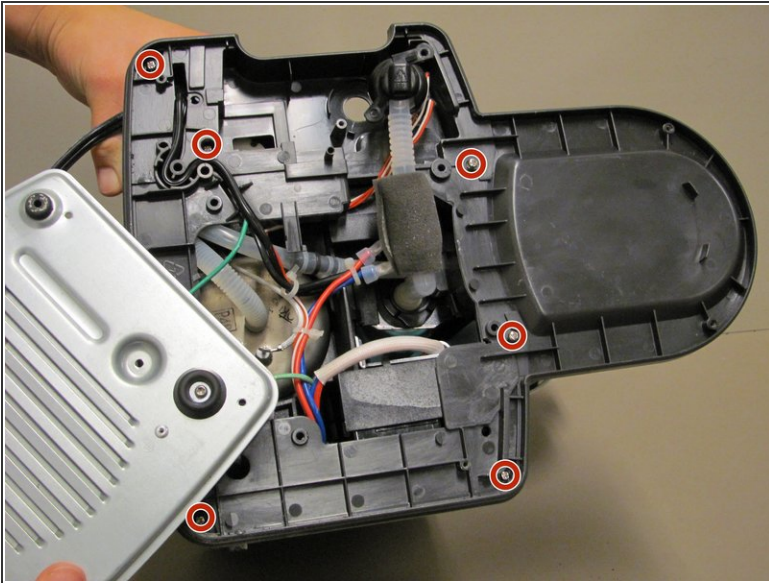
⚠ The cover will not remove entirely. Keep *green* ground wire attached to the cover.

Step 2 — Black Water Inlet



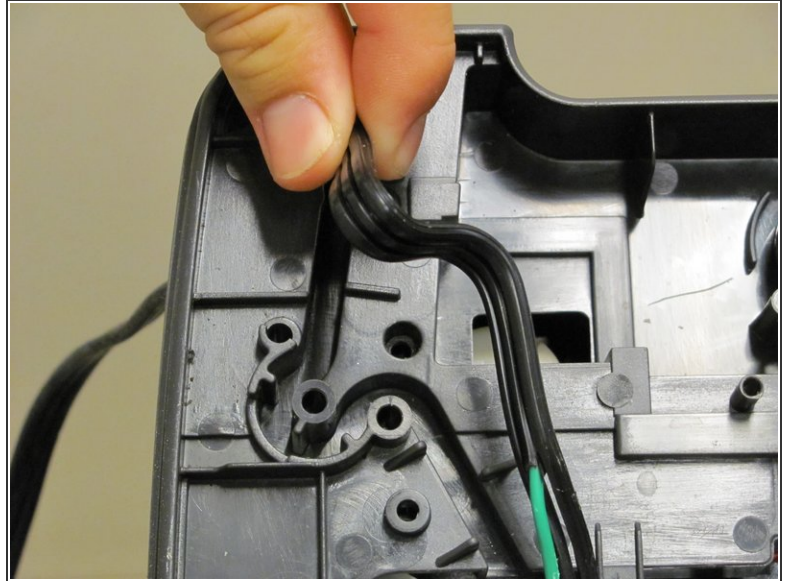
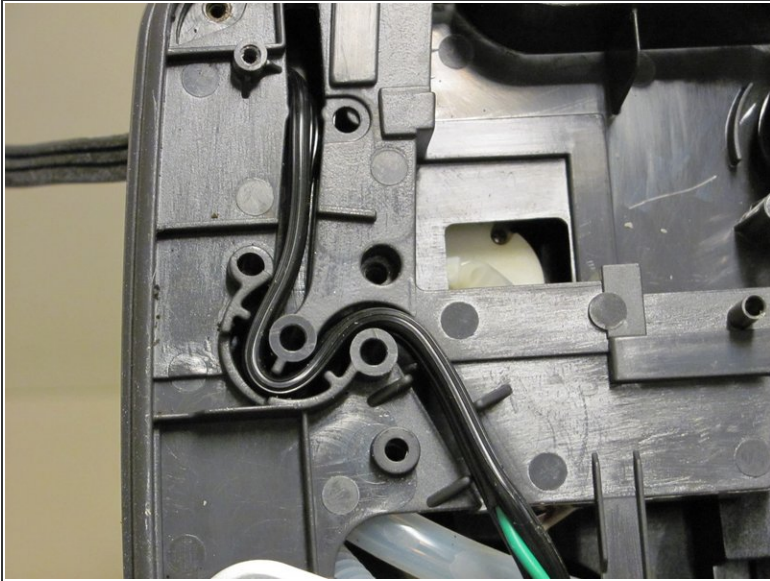
- Remove the two 14.5 Phillips screws.
- ⓘ Ensure that only the water inlet valve can be moved.

Step 3 — Bottom Cover #2



- Use a Phillips #0 screwdriver to remove the following six screws:
 - Six 14.5mm Phillips screws.

Step 4 — Power Cord

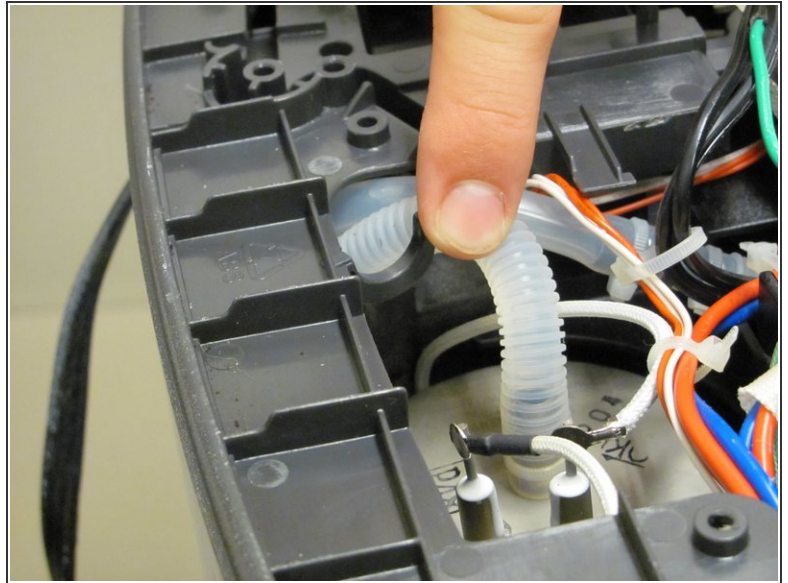
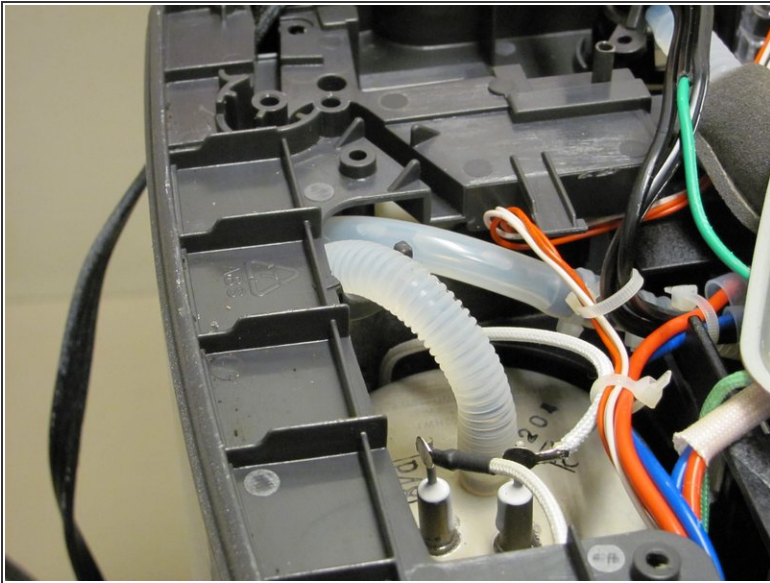


- Remove the power cord from the groove. (the black cord that leads into the green wire.)

ⓘ This creates more slack in the wire to give you more room to work with.

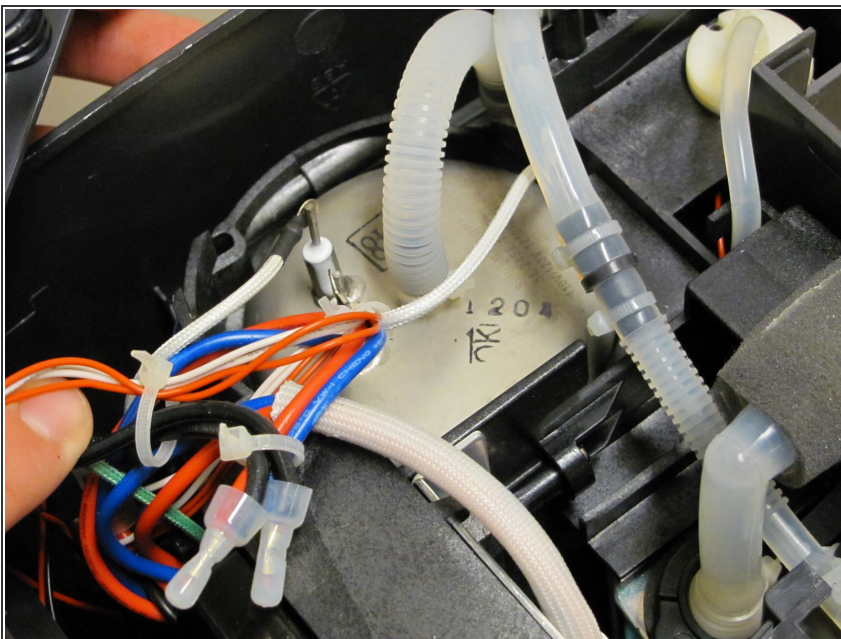
⚠ DO NOT remove green wire from the cover its attached to.

Step 5 — Clear Hose





- Identify the hose that connects to the heating tank. (Observe that it is held up on a small hook.)
- Push down on the hook and carefully move the hose from its grip.

Step 6 — Heating Tank



- Carefully pull out the heating tank by hand.

 The heating tank may still be hot. Exercise caution when grabbing hold of the tank. If necessary, wait four to six hours after last use.

-  Reminder for reassembly; You will need a new band to tie the hose back to the heating tank.

To reassemble your device, follow these instructions in reverse order.