



# IBM ThinkPad T30 Hard Drive Replacement

In this guide, you will learn how to remove and...

Written By: Allie Knauer



# INTRODUCTION

In this guide, you will learn how to remove and replace a hard drive for an IBM ThinkPad T30 laptop. The laptop comes with an IDE / PATA Hard disk drive that is either 20/40/60GB and is easy to remove only using a few tools

## 🔧 TOOLS:

Phillips #1 Screwdriver (1)  
iFixit Opening Tool (1)

## ⚙️ PARTS:

1 TB SSD (1)  
250 GB SSD (1)  
Crucial MX500 500 GB SSD (1)  
2 TB SSD (1)

## Step 1 — Battery



ⓘ Make sure the ThinkPad is off and the power supply is unplugged.

- Flip the ThinkPad upside down with the bottom facing you.
- Slide the latch to the right into the unlock position.
- While holding the latch in the unlock position, lift the battery out with your other hand.

## Step 2 — Hard Drive



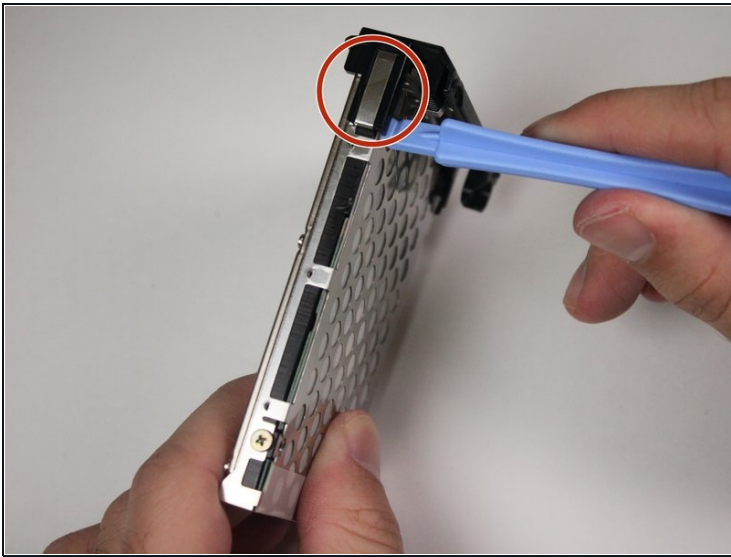
- Flip to the back of the Thinkpad.
- Remove the single 11 mm screw using the Phillips #0 screwdriver.

## Step 3



- Flip the Thinkpad on its side to get a better view of the hard drive.
- Push on the lower edge of the hard drive cover to detach the hard drive from the Thinkpad.
- Once you have detached the hard drive from the Thinkpad, slide the hard drive out of the device.

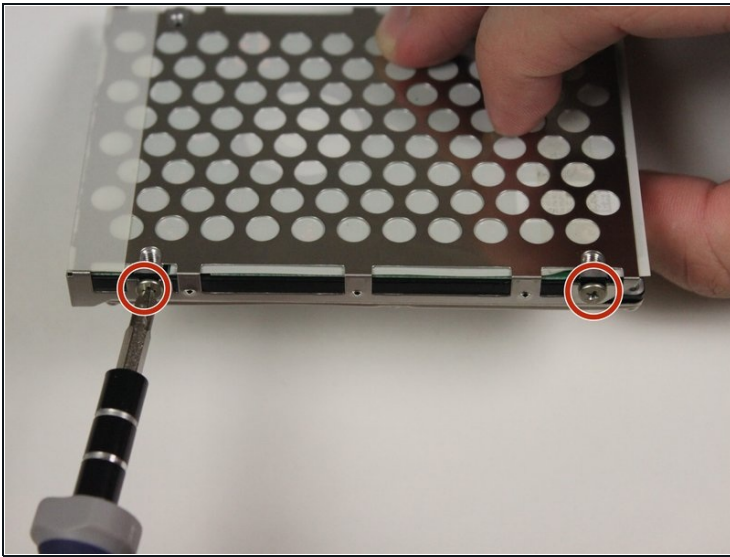
## Step 4



- Using the plastic tool, remove the black plastic cover from the main body of the hard drive.
  - Place the plastic tool at the ends of the plastic cover to detach it from the hard drive.
- ① Once the black plastic has been detached, the plastic will then slide off the body of the hard drive.



## Step 5



- Remove the four 2.8 mm screws from the mounting bracket using a Phillips #0 screwdriver.
  - Pull the mounting bracket off of the hard drive.
- ⓘ It may be easier to remove the mounting bracket by rotating it off of the hard drive as if it is on a hinge.

---

To reassemble your device with a new hard drive, follow these instructions in reverse order with a new hard drive replacing the old one.