



Motorola Moto Z Play Battery Replacement

Prerequisite only for removing the battery.

Written By: Jeff Suovanen



INTRODUCTION

Prerequisite only for removing the battery.

TOOLS:

T3 Torx Screwdriver (1)

PARTS:

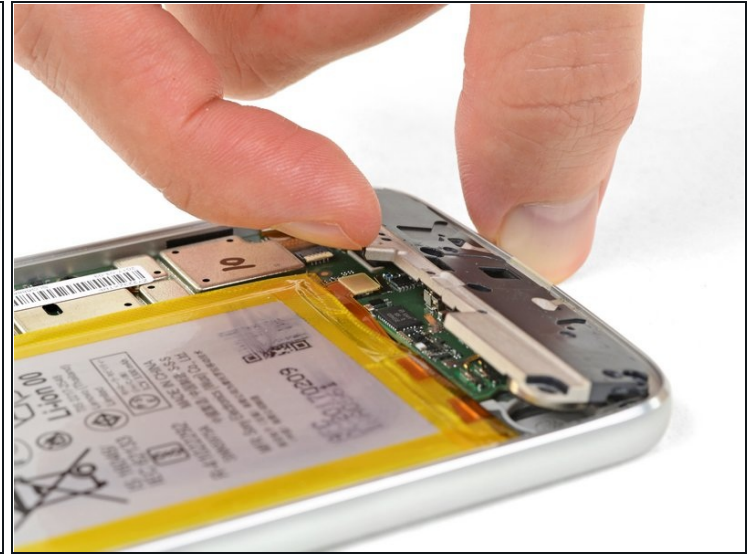
Moto Z Play Battery - Genuine (1)

Step 1 — Battery



- Use a T3 Torx driver to remove the six 3.2 mm screws securing the lower cover.

Step 2



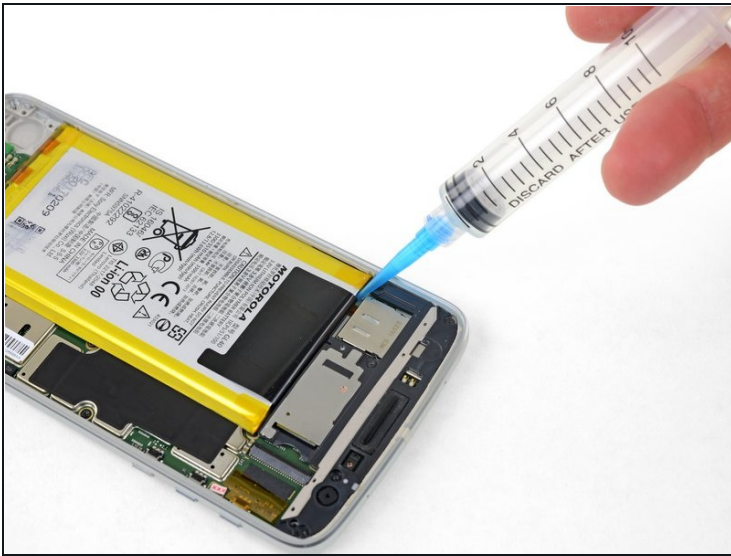
- Pry up and remove the lower cover.
⚠ If you use a tool, don't pry against the battery or motherboard.

Step 3



- Use a spudger to disconnect the battery by prying its connector straight up from the motherboard.

Step 4



ⓘ The battery is strongly glued into place.

- Peel up the black pull tab at the top edge of the battery, and slowly pull it away from the battery at about a 45-degree angle to release the command strips (a.k.a. stretch-release adhesive) underneath.
- ⓘ If the command strips break or the black pull tab is missing, you can still remove the battery using heat and/or isopropyl alcohol to weaken the adhesive.
 - Apply some high concentration (>90%) isopropyl alcohol under each corner of the battery and allow it to penetrate for several minutes to help weaken the adhesive.
 - Alternatively, [apply a freshly heated iOpener](#) to the back of the phone directly behind the battery for two minutes to help soften the adhesive. Re-heat and reapply the iOpener as necessary.

Step 5

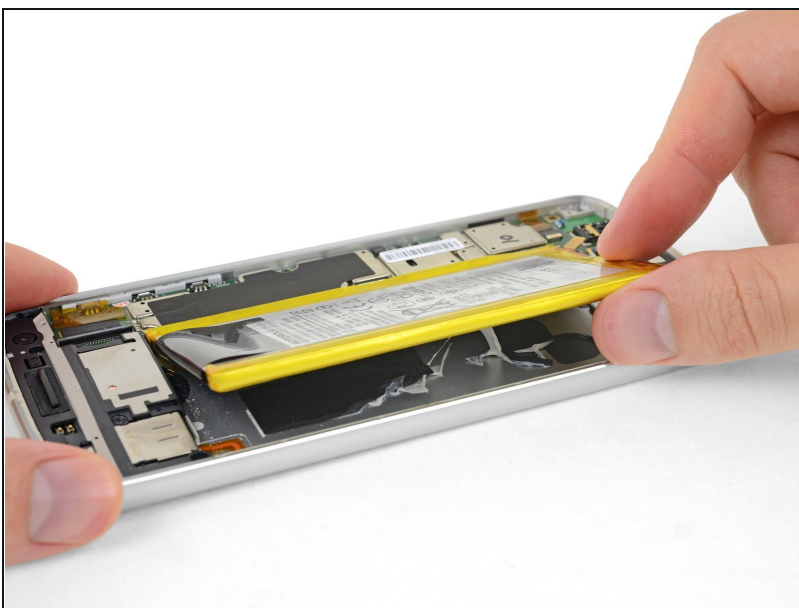


⚠ When using tools to pry up the battery, be careful not to damage the two orange flex cables hidden underneath the battery's top edge.

- Insert several opening picks or a [plastic card](#) along the outer edge of the battery.
- Apply steady, even pressure to *slowly* lever the battery up and out of the phone.
 - ① If necessary, use several rounds of heating and pressure to slowly weaken the adhesive, and the battery will begin to separate.

⚠ Try your best not to deform the battery during this process. Soft-shell lithium-ion batteries can leak dangerous chemicals, catch fire, or even explode if damaged. **Do not** use excessive force or pry at the battery with metal tools.

Step 6



- Continue pulling up the battery until all the adhesive releases from the rear case.

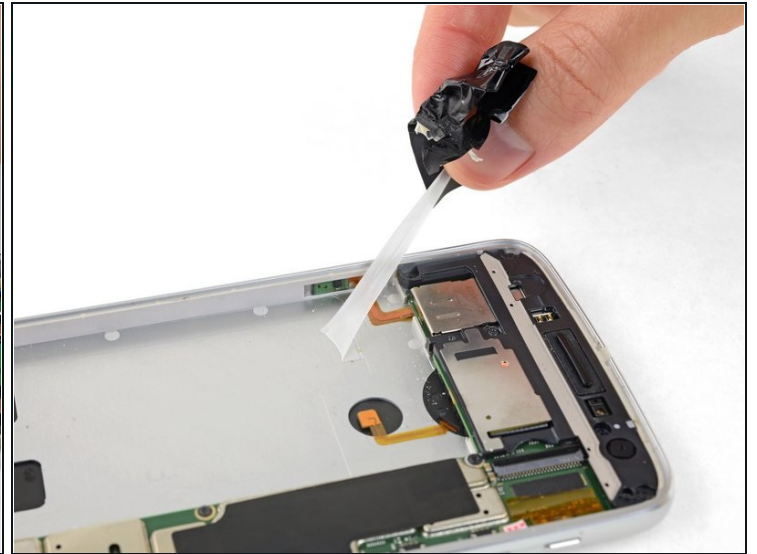
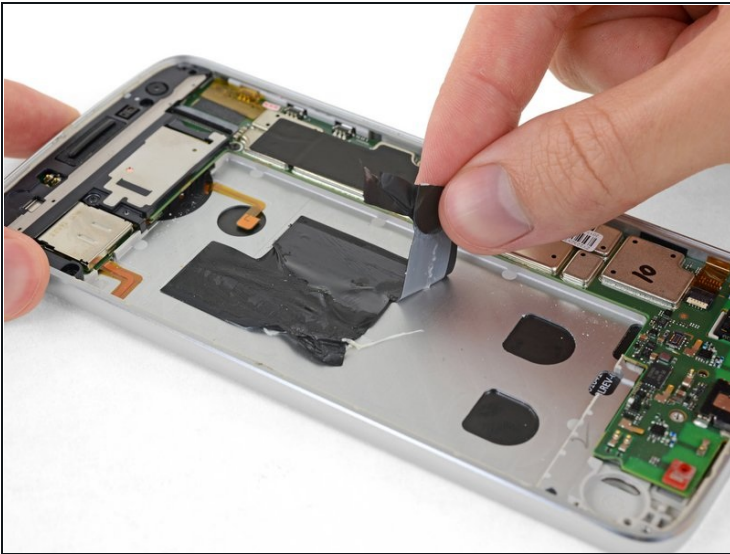
Step 7



- Remove the battery.

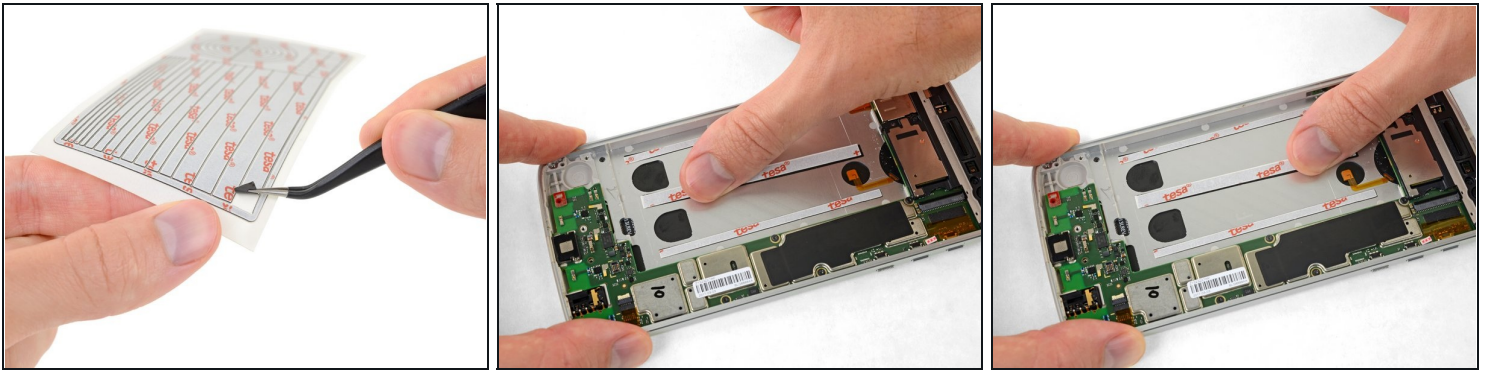
⚠ Do not reuse the battery after it has been removed. The stress of removal can cause hidden damage to the battery cell, creating a potential safety hazard. Replace it with a new battery.

Step 8



- Before installing your new battery, peel up all the old adhesive and remove it from the phone.
- For best results, clean the area underneath the battery with isopropyl alcohol and a lint-free cloth or coffee filter. This helps prep the surface so the new battery will adhere more strongly.

Step 9



- Place [stretch-release adhesive strips](#) or several strips of thin double-sided adhesive tape, either from a [pre-cut adhesive card](#) or from a roll of [Tesa 61395](#), into the battery well, and press them firmly into place.

Step 10



- Peel off the remaining film liners to expose the adhesive before pressing your new battery into place.
- Carefully position the battery and press it firmly and evenly into the phone.
- Connect the battery to the motherboard, and install the lower cover, including its six T3 Torx screws.

To reassemble your device, follow these instructions in reverse order.