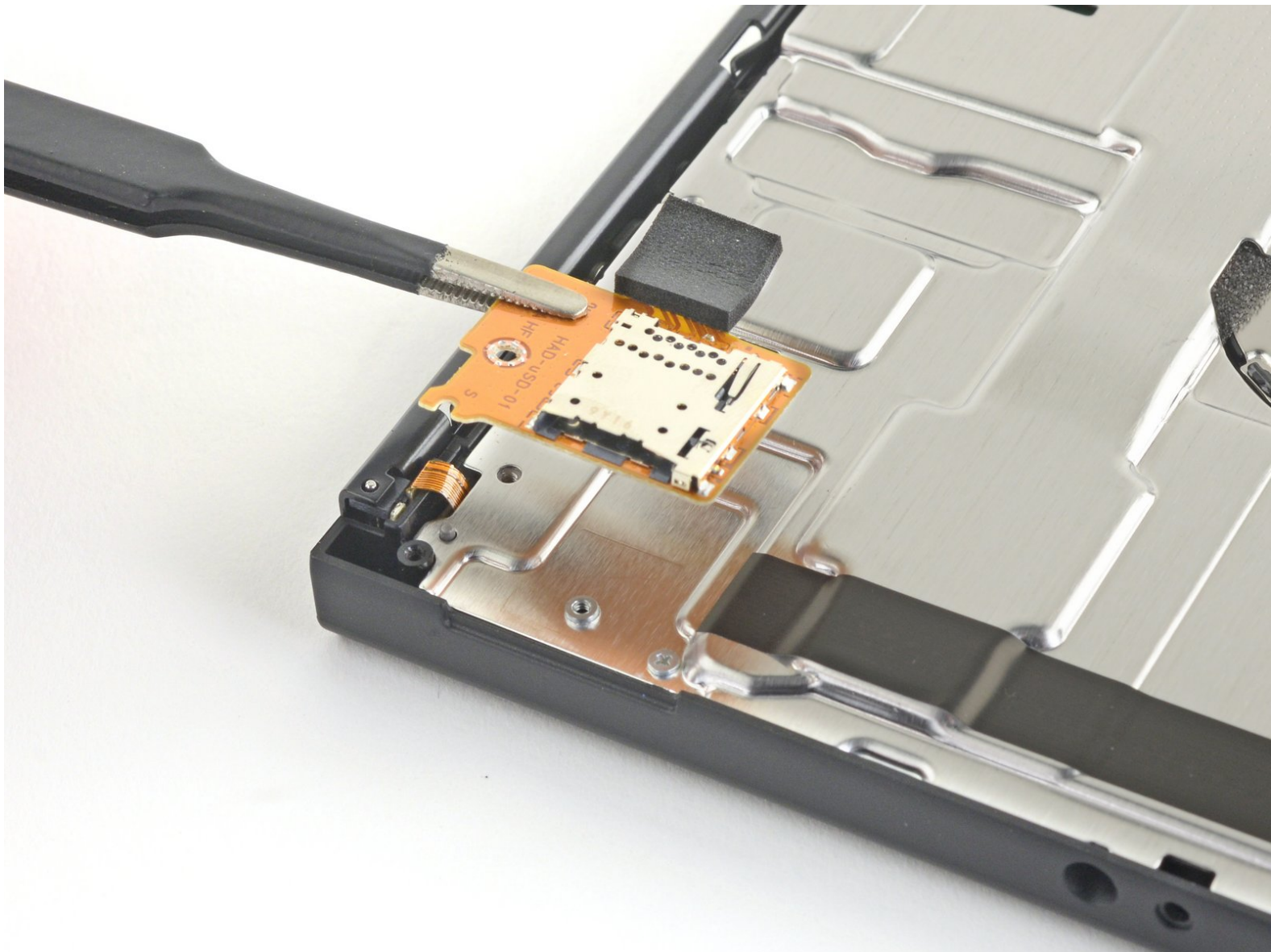




Nintendo Switch Micro SD Card Reader Replacement

Replace a damaged or faulty microSD card reader on your Nintendo Switch game console.

Written By: Craig Lloyd



INTRODUCTION

Follow this guide to replace a damaged or faulty microSD card reader on your Nintendo Switch game console.

The Switch uses JIS screws, but you can use a Phillips screwdriver in a pinch. Be very careful not to strip the screws. iFixit's Phillips bits are designed to be cross-compatible with JIS-style screws.

WARNING: The battery cannot be disconnected during this repair, so make sure to only use ESD-safe tools and be extra careful when using any metal tools. Not doing so could short a connection and damage the device.

Note: This guide, and the part we sell, are compatible with the original Nintendo Switch model released in 2017, as well as the newer refreshed model released in 2019 (model numbers HAC-001 and HAC-001(-01), respectively).



TOOLS:

- [JIS #000 Screwdriver](#) (1)
- [Tri-point Y00 Screwdriver](#) (1)
- [Tweezers](#) (1)



PARTS:

- [Nintendo Switch SD Card Reader](#) (1)

Step 1 — Release the Joy Con controller locking tabs



- ❗ Before you begin this repair, make sure the device is completely powered off.
- Press and hold down the small round button on the back of the Joy Con controller.
- While you hold down the button, slide the controller upward.

Step 2 — Remove the Joy Con controllers



- Continue sliding the Joy Con upward until it's completely removed from the console.
- ❗ Repeat this same process for the other Joy Con.

Step 3 — Remove the back-side screws



- Use a Y00 screwdriver to remove the four 6.3 mm-long screws securing the rear panel.
- ⓘ Throughout this repair, [keep track of each screw](#) and make sure it goes back exactly where it came from.

Step 4 — Remove the top and bottom screws



- Use a JIS 000 driver or an official iFixit PH 000 driver to remove the following screws securing the rear panel:
 - One 2.5 mm-long screw on the top edge of the device
 - Two 2.5 mm-long screws on the bottom edge of the device
- ⓘ To prevent these tight screws from [stripping](#), apply firm downward force, work slowly and try another JIS 000 or PH 000 driver if the screws won't come out.

Step 5



- Use a JIS 000 screwdriver or an official iFixit PH 000 driver to remove the two 3.8 mm center screws on the sides of the device (one on each side).

Step 6



- Use your finger to flip up the kickstand on the back of the device.
 - ⓘ If there's a microSD card in the microSD card slot, remove it now before you continue to the next step.

Step 7



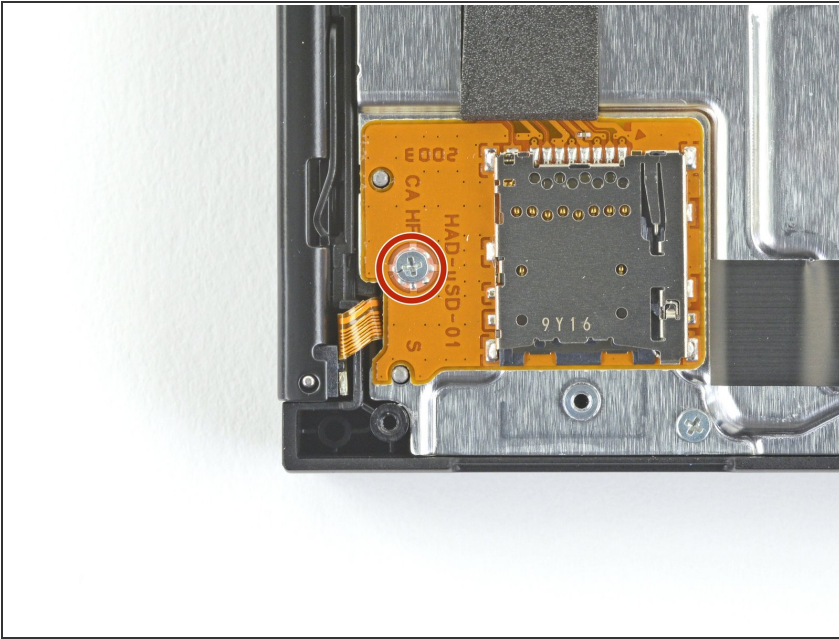
- Use a JIS 000 screwdriver or an official iFixit PH 000 driver to remove the 1.6 mm screw in the kickstand well.
- Close the kickstand.

Step 8



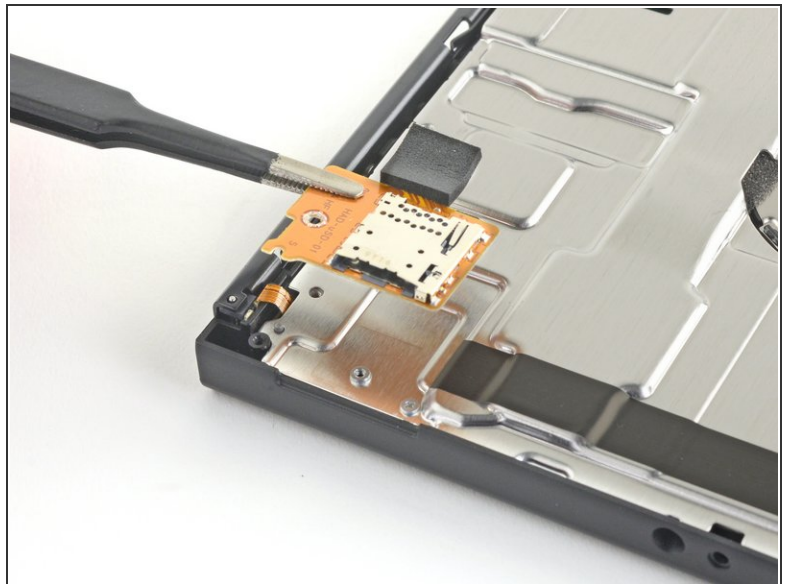
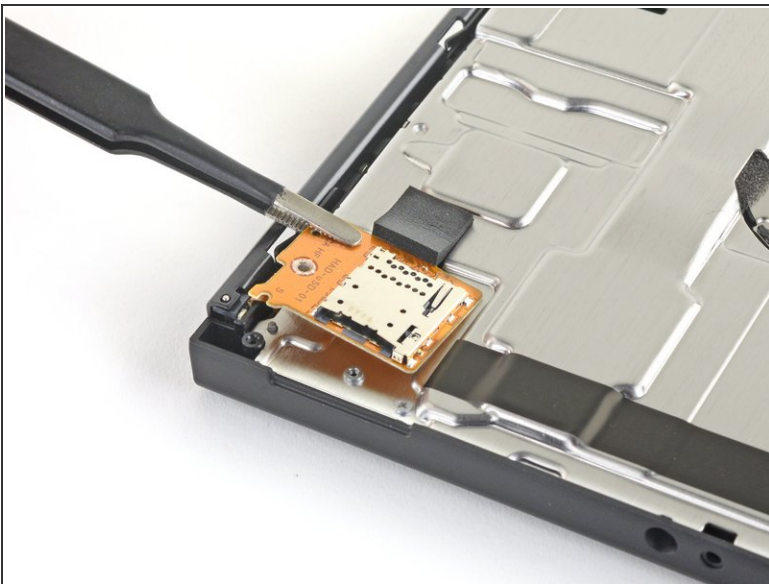
- Open the game card cartridge flap.
- *i* The game card cartridge flap attaches to the other half of the plastic shell, preventing you from completely lifting up the rear panel if it's closed.
- Lift the rear panel up from the bottom of the device and remove it.

Step 9 — Remove the microSD card reader



- Use a JIS 000 screwdriver or an official iFixit PH 000 driver to remove the 3.1 mm screw securing the microSD card reader to the device.

Step 10



- Use your fingers or a pair of tweezers to lift the microSD card reader straight up from the device to disconnect and remove it.
- ☑ During reassembly, make sure the press connector underneath the foam pad is firmly connected to the motherboard. It may help to remove the foam pad before reinstalling the card reader.

Compare your new replacement part to the original part. You may need to transfer remaining components or remove adhesive backings from the new part before installing.

To reassemble your device, follow these instructions in reverse order.

Take your e-waste to an [R2 or e-Stewards certified recycler](#).

Repair didn't go as planned? Try some [basic troubleshooting](#), or ask our [Nintendo Switch Answers community](#) for help.