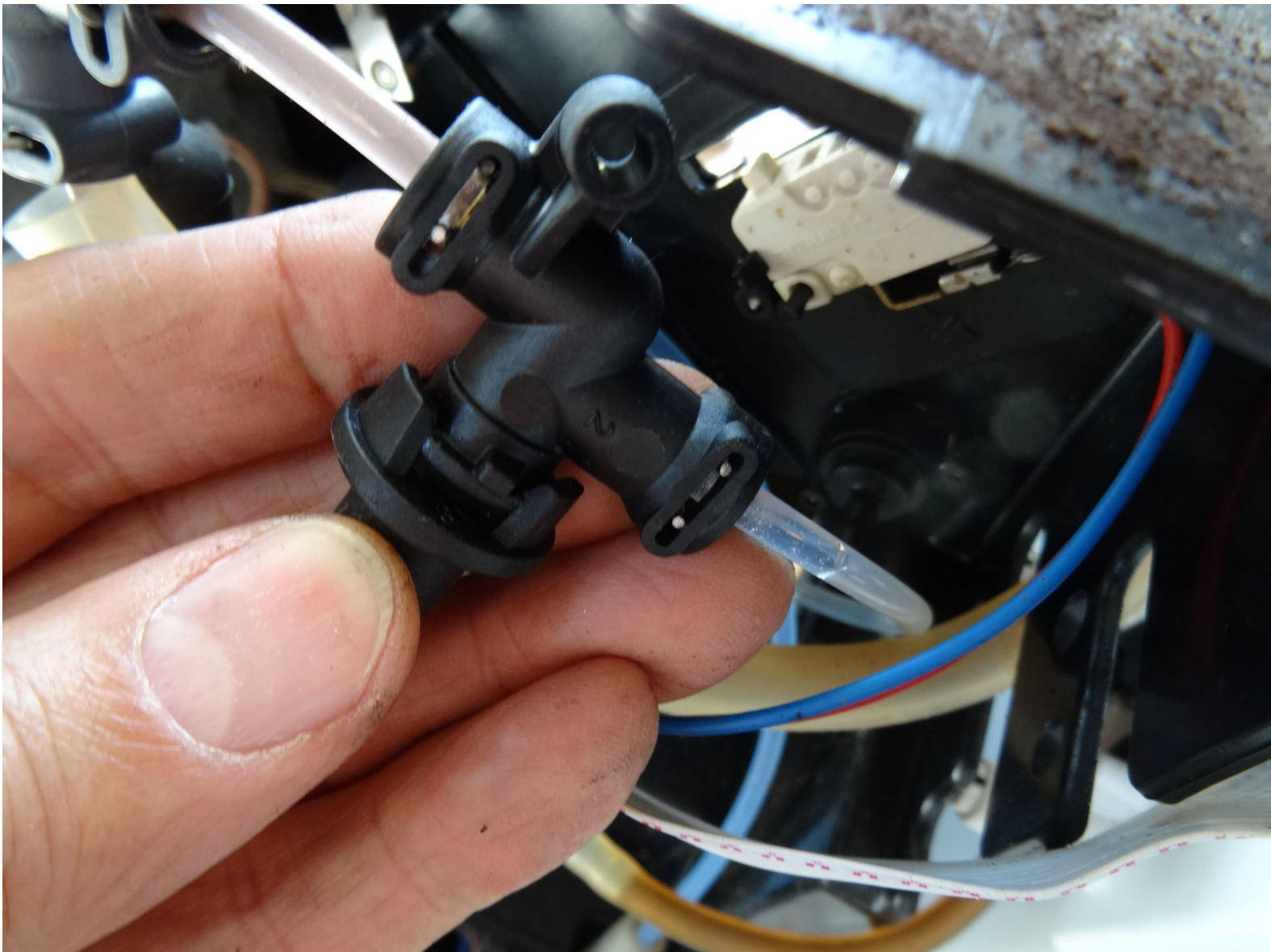




# Siemens Surpresso Outlet Valve repair

Replace the gaskets in the outlet valve of a Siemens Surpresso

Written By: VauWeh



## INTRODUCTION

The gaskets in the outlet valve are heavily used. If the valve leaks or doesn't let water through anymore you can replace it.



### TOOLS:

- [T10 Torx Screwdriver](#) (1)
- [Flathead Screwdriver](#) (1)





### PARTS:

- [New Item](#) (1)

## Step 1 — Opening the Siemens Surpresso Compact



 **Unplug your coffee maker!**

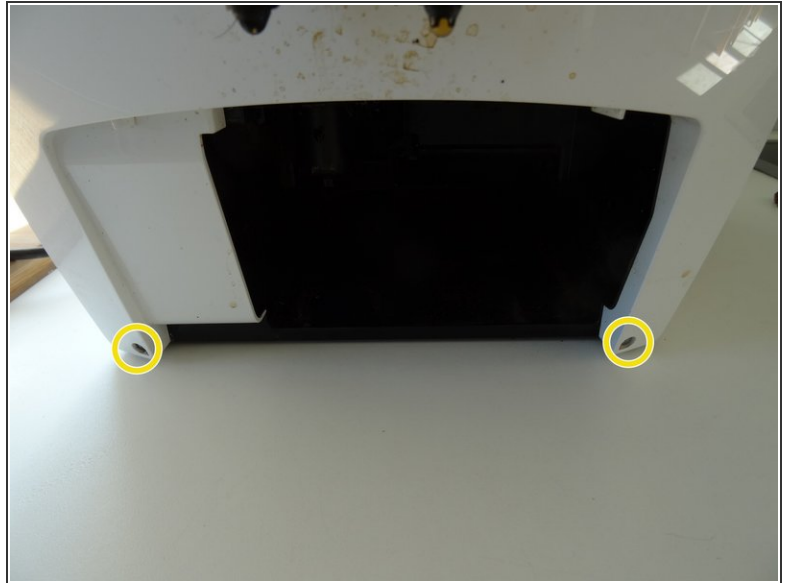
- Remove the water container, the brew group and the drip tray with pomace container.
- Using a spoon, remove as much of the coffee beans as possible from the coffee bean container.
-  Depending on the model, additional sensors with cables may be installed on the top and side panels. You have to remove these before you can completely remove the housing parts.

## Step 2



- Remove the two Torx T10 screws on the top.

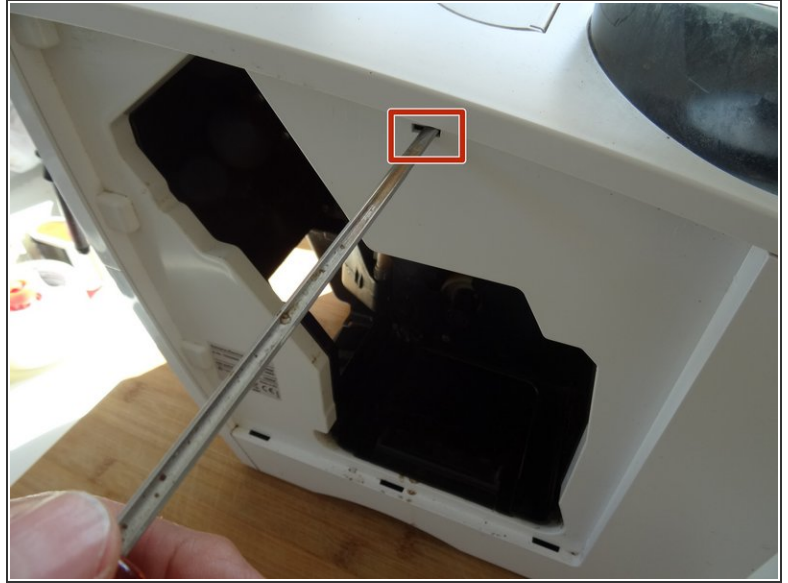
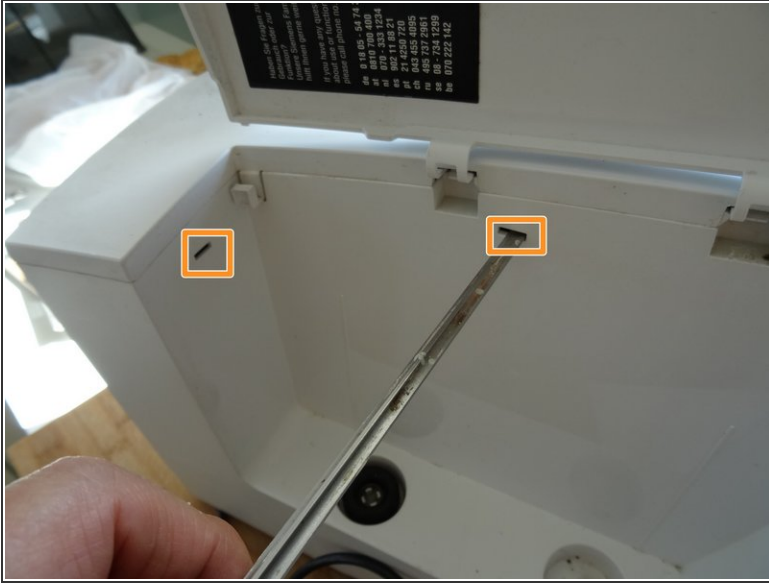
### Step 3



- Remove seven T10 Torx screws on the back.
- The two screws at the bottom of the front can remain.

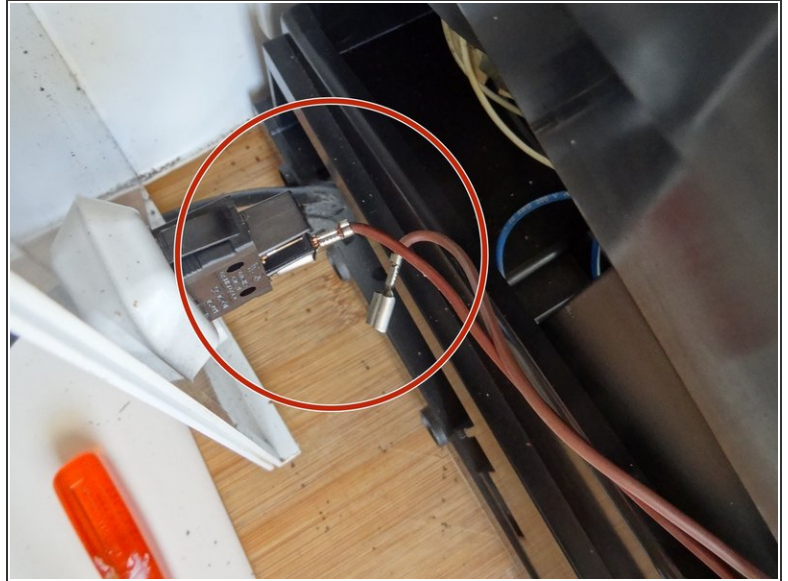


## Step 4



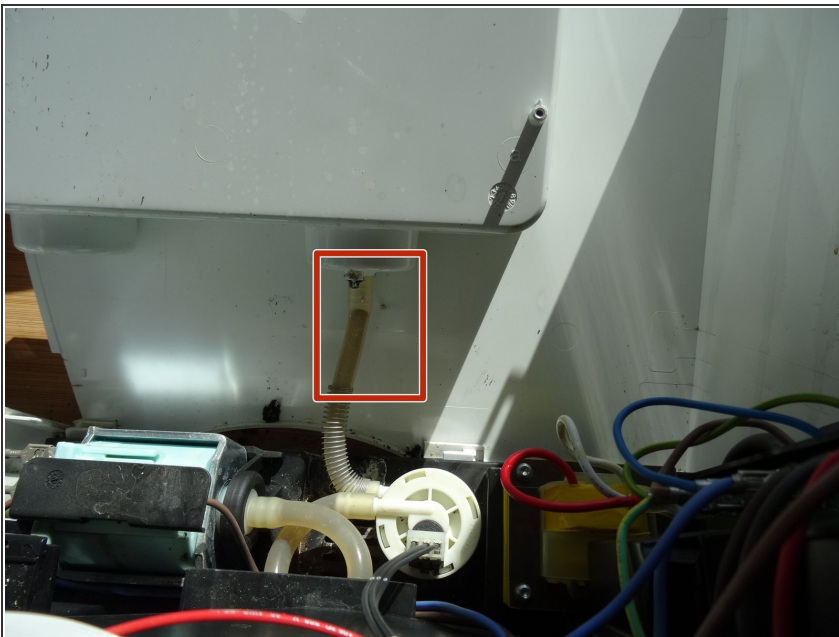
- Press with a flat-head screwdriver into the openings on the side with the water tank. This releases the latches on the top.
- Press the flat-head screwdriver into the opening on the side with the brew group. This will release the last notch on the top.
- Lift the top off.
- On some models, a cable leads to the sensor on the powder tray. Unplug the connector on this cable first.

## Step 5



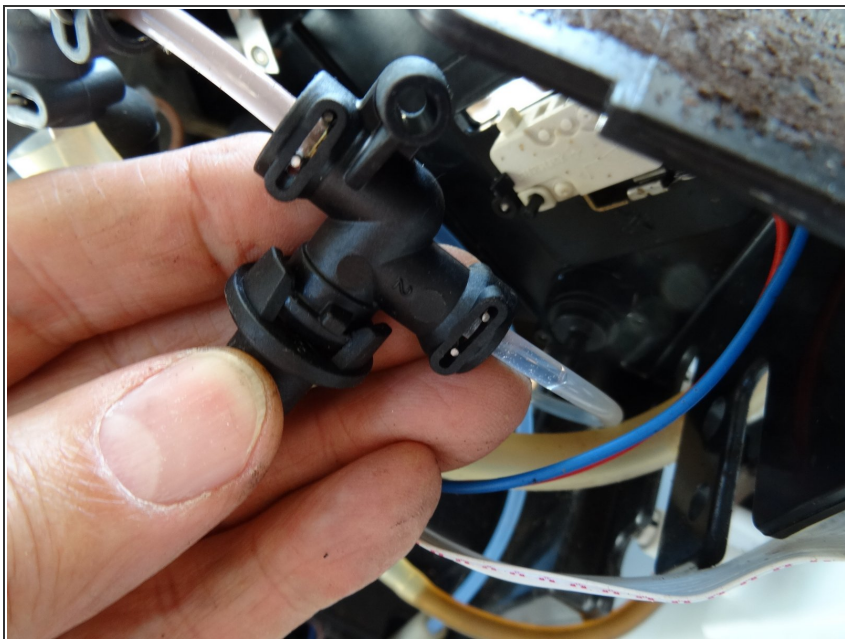
- Slide the side section of the brewing unit about 2 cm to the rear. This sometimes gets stuck and may require some force to remove.
- Remove the two tabs from the power switch.
- Take off the side panel with the brew group.

## Step 6



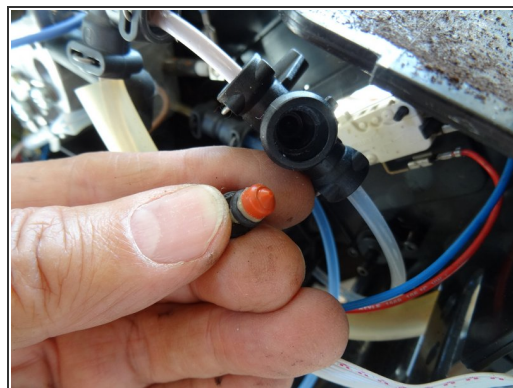
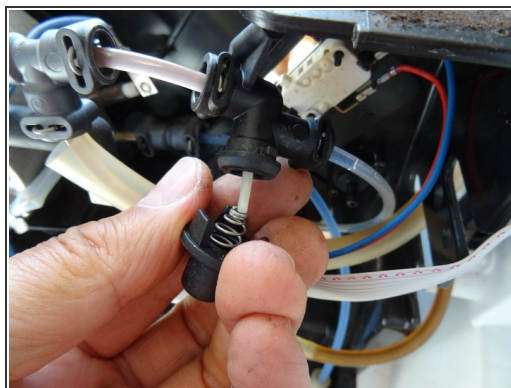
- Do the same with the panel on the other side.
- To remove the water tank hose simply pull it off the pump.
- Remove the side panel.

## Step 7 — Outlet valve



- Look for the outlet valve on the top right of the device.

## Step 8



- There are three latches securing the valve lid. Carefully lift the lid up using a metal spudger.
- Lifting the lid exposes a spring, a plunger and its holder, an O-ring and the seal of the plunger. The photo shows clearly the imprint of the valve seat, so the valve doesn't close properly. The plunger tends to break but the spare plunger in the repair kit is made of metal.
- ⓘ Note the order and orientation of the parts (photo).
- ⓘ Alternatively you can replace the complete valve, it's not too expensive.

To reassemble your device, follow these instructions in reverse order.