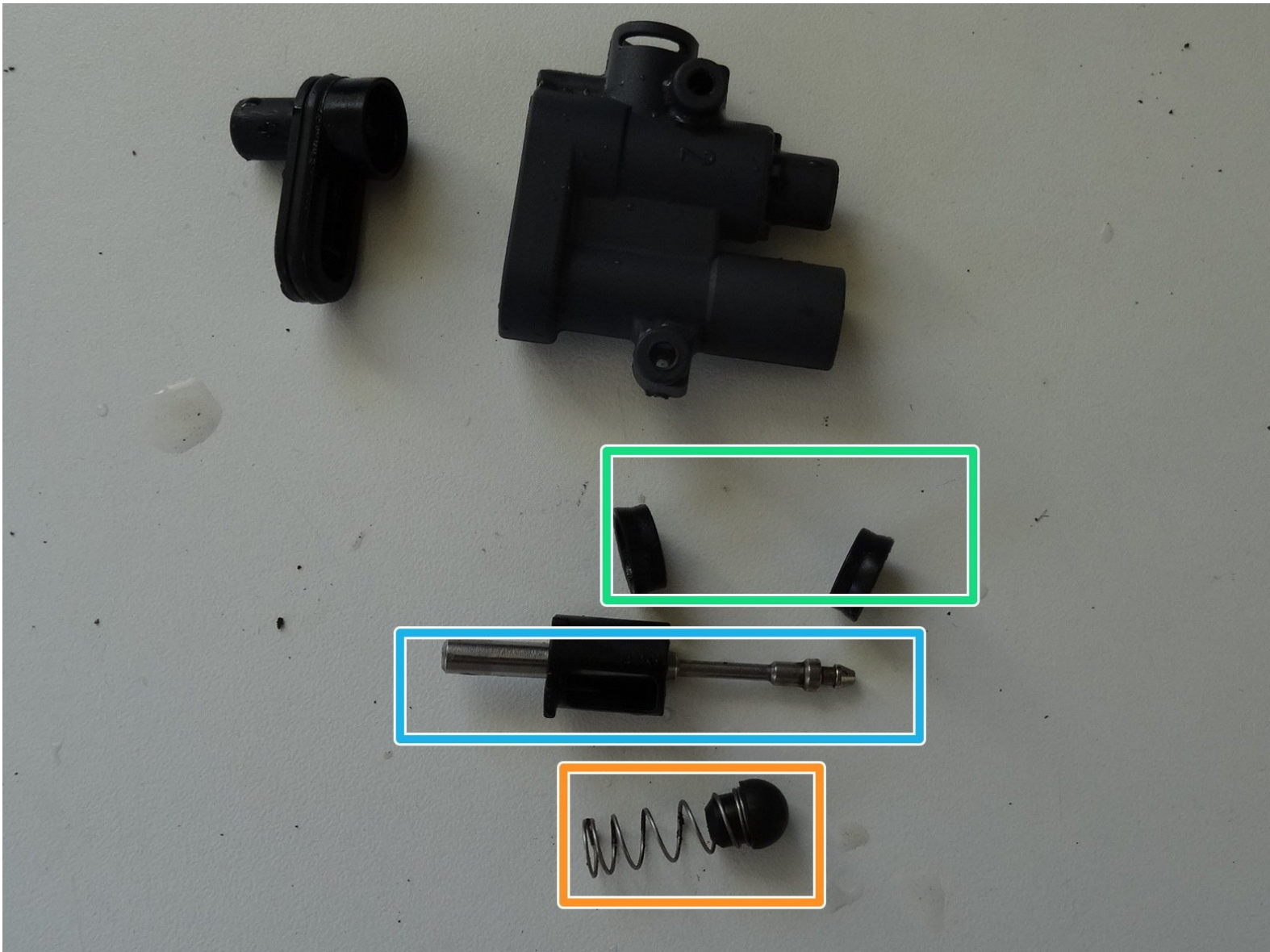




Siemens Surpresso drainage valve gaskets

Replacement of the drainage valve gaskets in a Siemens Surpresso Compact.

Written By: VauWeh





TOOLS:

- [TR10 Torx Security Screwdriver](#) (1)



PARTS:

- [New Item](#) (1)

Step 1 — Opening the Siemens Surpresso Compact



⚠️ Unplug your coffee maker!

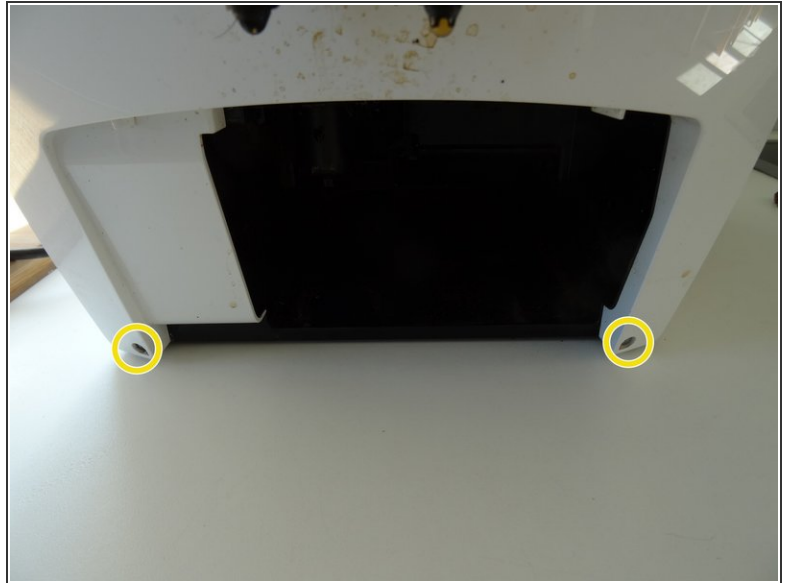
- Remove the water container, the brew group and the drip tray with pomace container.
- Using a spoon, remove as much of the coffee beans as possible from the coffee bean container.
- ⓘ Depending on the model, additional sensors with cables may be installed on the top and side panels. You have to remove these before you can completely remove the housing parts.

Step 2



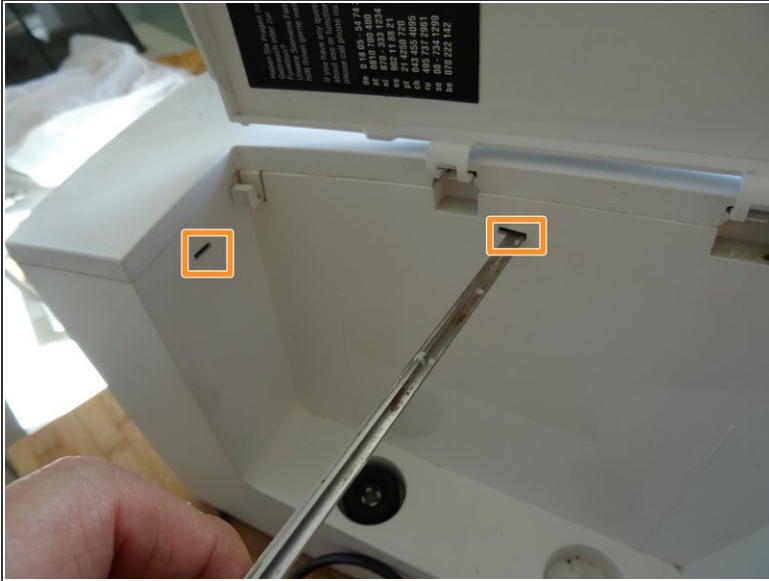
- Remove the two Torx T10 screws on the top.

Step 3



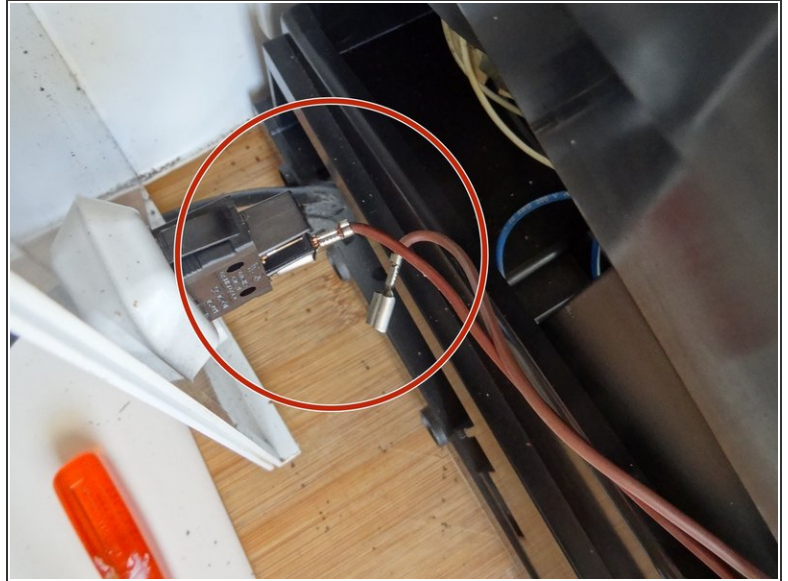
- Remove seven T10 Torx screws on the back.
- The two screws at the bottom of the front can remain.

Step 4



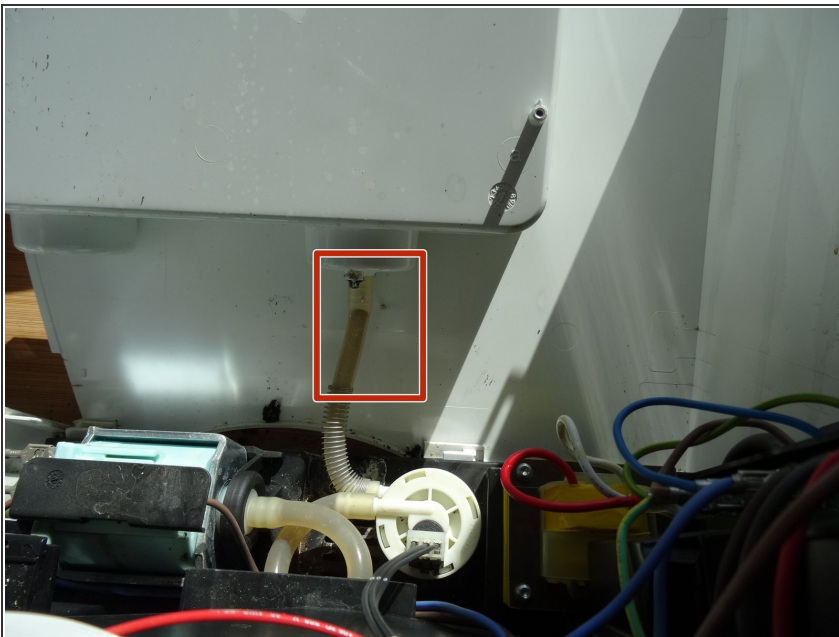
- Press with a flat-head screwdriver into the openings on the side with the water tank. This releases the latches on the top.
- Press the flat-head screwdriver into the opening on the side with the brew group. This will release the last notch on the top.
- Lift the top off.
- On some models, a cable leads to the sensor on the powder tray. Unplug the connector on this cable first.

Step 5



- Slide the side section of the brewing unit about 2 cm to the rear. This sometimes gets stuck and may require some force to remove.
- Remove the two tabs from the power switch.
- Take off the side panel with the brew group.

Step 6



- Do the same with the panel on the other side.
- To remove the water tank hose simply pull it of the pump.
- Remove the side panel.

Step 7 — Gear Drive



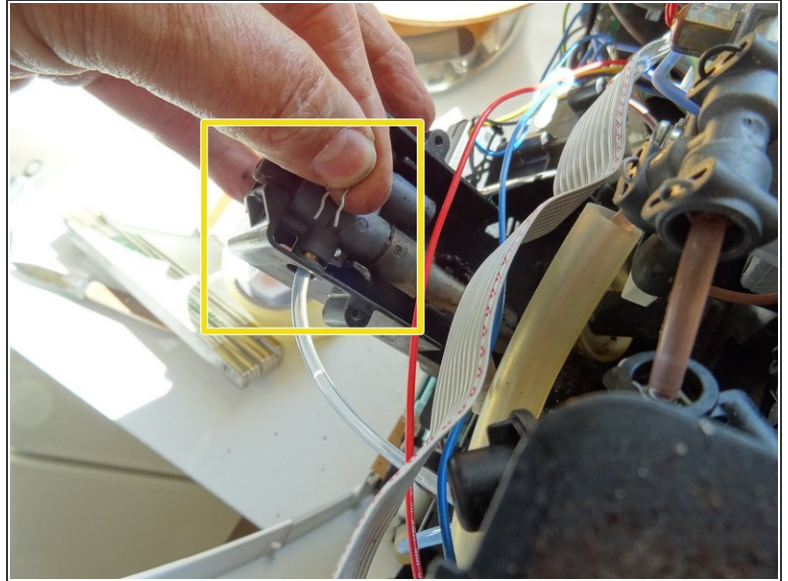
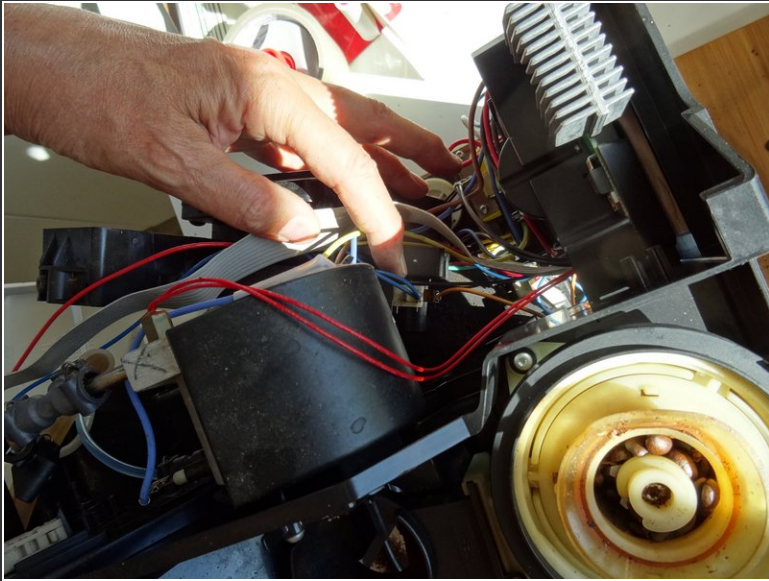
- Rotate clockwise the expansion box about 60 degrees and pull it out.
- ⓘ The expansion box is frequently filled with coffee oils or grounds. Clean it from time to time. It can easily be separated into two halves.

Step 8



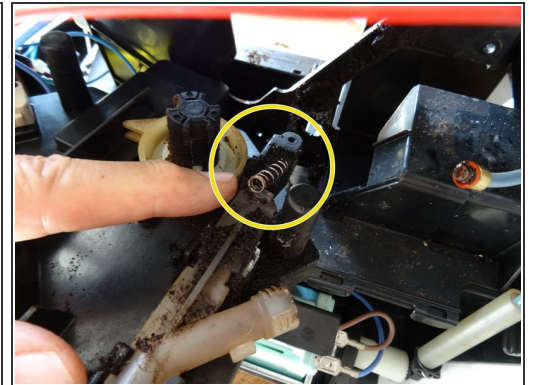
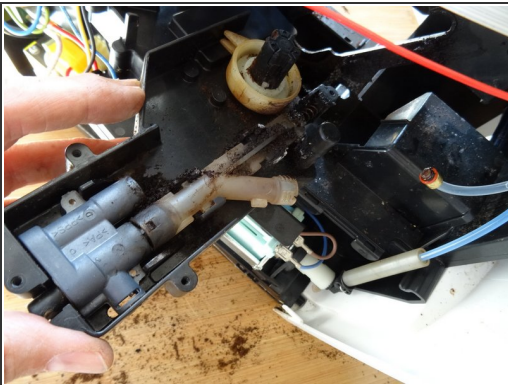
- ⓘ The drainage valve is directly plugged to the gear drive. The drive is fixed with five Torx T10 screws on the center panel behind the brew group.
- Remove the five Torx T10 screws holding the gear drive in place.

Step 9



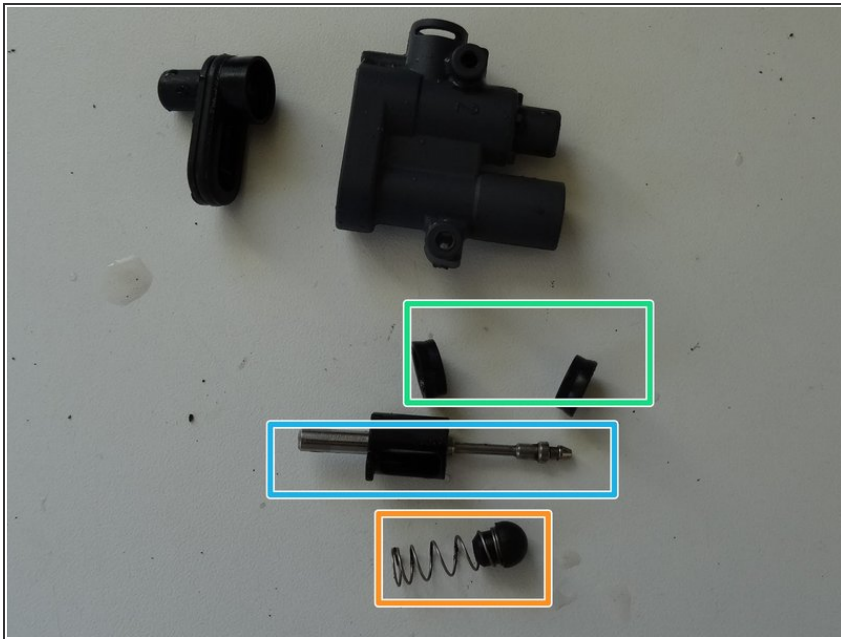
- Push the gear drive outwards to the left. Pay attention, several cables might get caught.
- Lay the gear drive on its side. Loosen the upper water connector by pulling the clamp and then sliding off the hose. Mind the O-ring on the end of the hose, replace it if necessary.

Step 10 — Drainage Valve



- The drainage valve is exposed.
- Remove the spring on the lower end of the valve.
- Lift the upper gray part of the valve. Push the lower part of the valve a little bit downwards and lift it out.

Step 11 — Drainage valve gaskets



- ⓘ There are different versions of this valve. The tappet can be different, the valve stem can only be a ball, one or two seals are used. However, all valves function in the same way.
- Pull the cap of the grey upper valve body. Use pliers, if it is stuck.
- There are two gaskets, the flat side pointing outwards.
- ⓘ Newer valves have only one gasket
- Plunger and downholder
- Piston and spring
- Replace the gaskets and reassemble the valve.

To reassemble your device, follow these instructions in reverse order.