



# Samsung SGH-C450 Teardown

Written By: Bryan





## TOOLS:

- [Phillips #0 Screwdriver](#) (1)
  - [Large Needle Nose Pliers](#) (1)
  - [Flathead 3/32" or 2.5 mm Screwdriver](#) (1)
  - [iFixit Opening Tools](#) (1)
-

## Step 1 — Samsung SGH-C450 Teardown



- Remove the battery cover, battery and SIM Card.

## Step 2



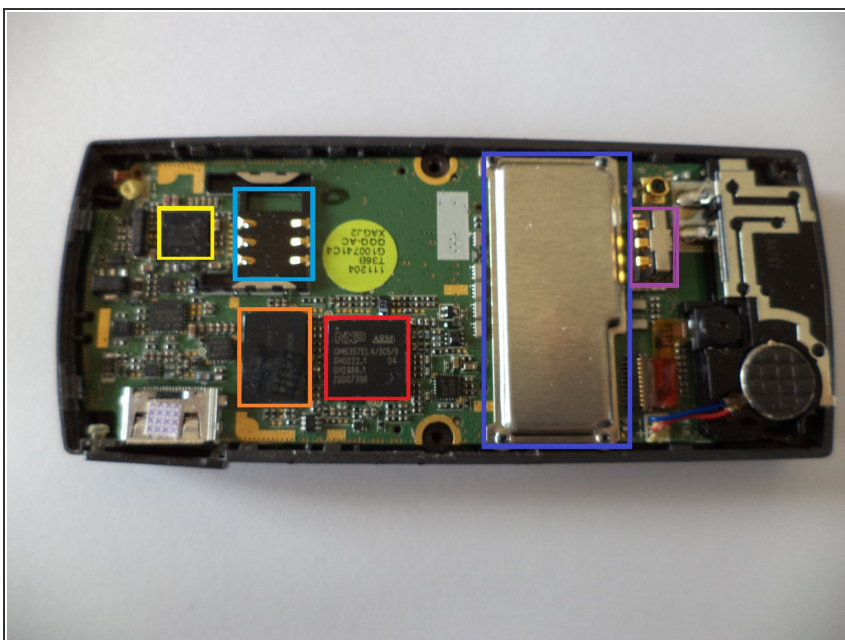
- Remove these screws.

### Step 3



- Insert your flathead screwdriver or opening here and go around the device
- Gently pry open the case.

### Step 4



- Once the case is removed you can see the PCB.
- NXP OM6357EL4 ARM CPU
- SPANSION Flash Memory
- NXP CF50600 battery and power supply controller
- SIM Card slot
- EMI Shield
- Battery Contacts

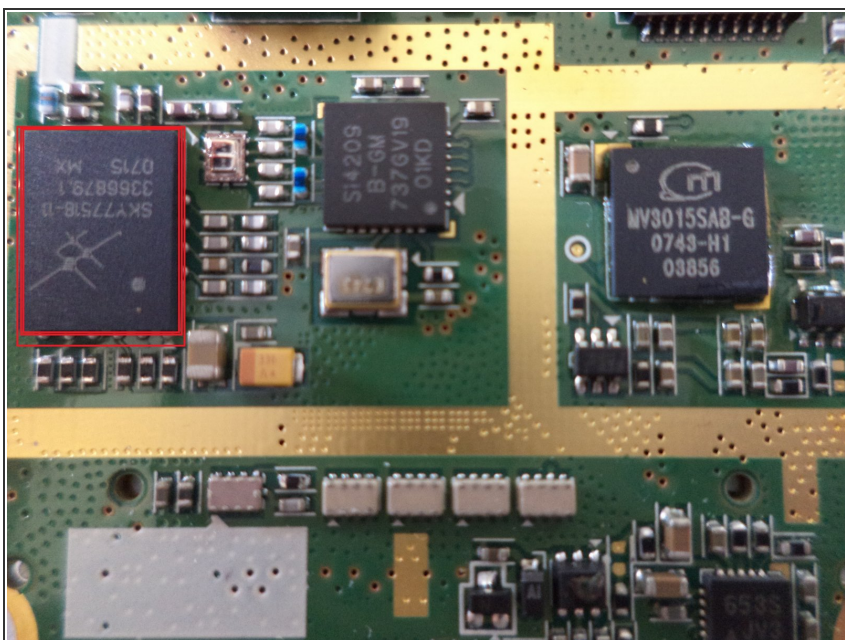


## Step 5



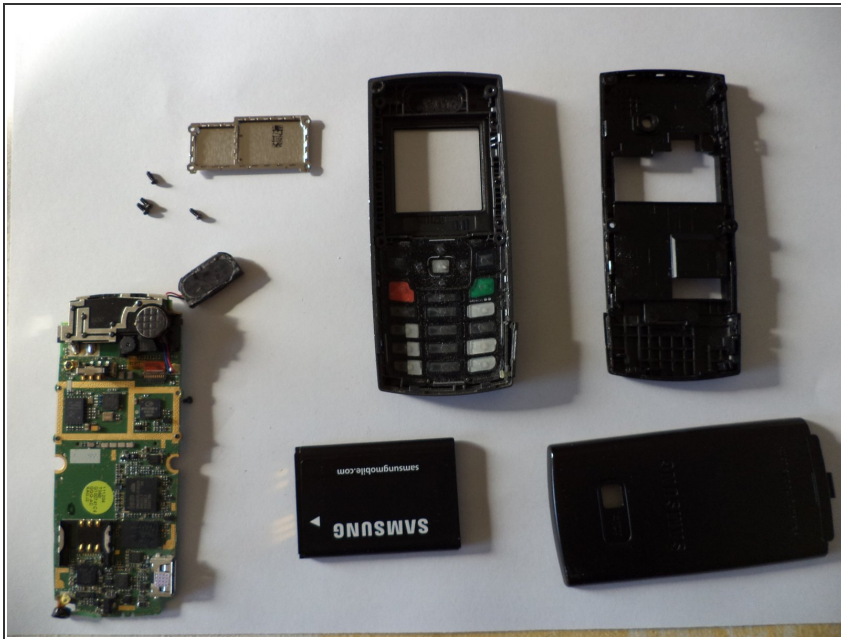
- To get the other side of the PCB, pull up the edges of the PCB with a flathead screwdriver.
- To remove the EMI shield on the other side, remove these screws

## Step 6



- The IC's under the EMI shield.
- Skyworks SKY77518 Dual-Band GSM/GPRS Module

## Step 7



- Finished!

To reassemble your device, follow these instructions in reverse order.