



Disassembling Sony Ericsson w600i Back Housing

Disassembling the back housing of the w600i in order to access components of that section or the swivel assembly.

Written By: Beau Blanchard



INTRODUCTION

This disassembly prerequisite is required to access most components in the phone, as the swivel assembly also secures the display section to its housing.



TOOLS:

- [precision screw drivers](#) (1)
 - [Spudger](#) (1)
 - [T5 Torx Screwdriver](#) (1)
-

Step 1 — Disassembling Sony Ericsson w600i Battery Cover



- Grip the lower portion of the back of the phone and slide downwards.

Step 2 — Battery



- Lift battery at the rounded notch near the bottom of the phone.

Step 3 — Back housing



- Unscrew the four Torx screws from the backplate.
- The backplate may begin to separate from the keypad face. Do not try to remove it yet.
- The screws are T5 Torx screws, 5.6mm.

Step 4



- Swivel the phone open.

Step 5



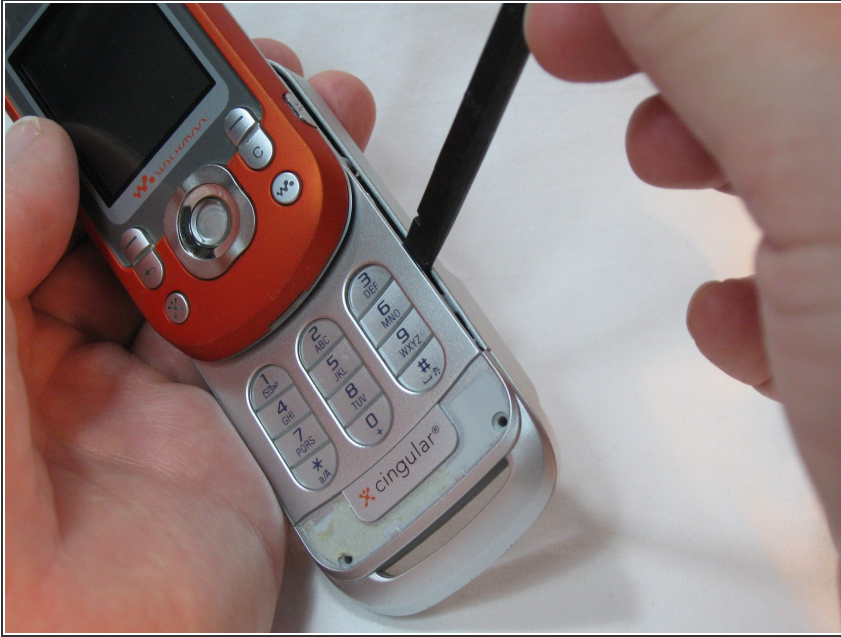
- Using the Spudger, gently pry up the U-shaped grey cover below the keypad.
- ☑ The cover is secured with adhesive tape. The gentler this is removed, the easier it will be to reassemble.

Step 6



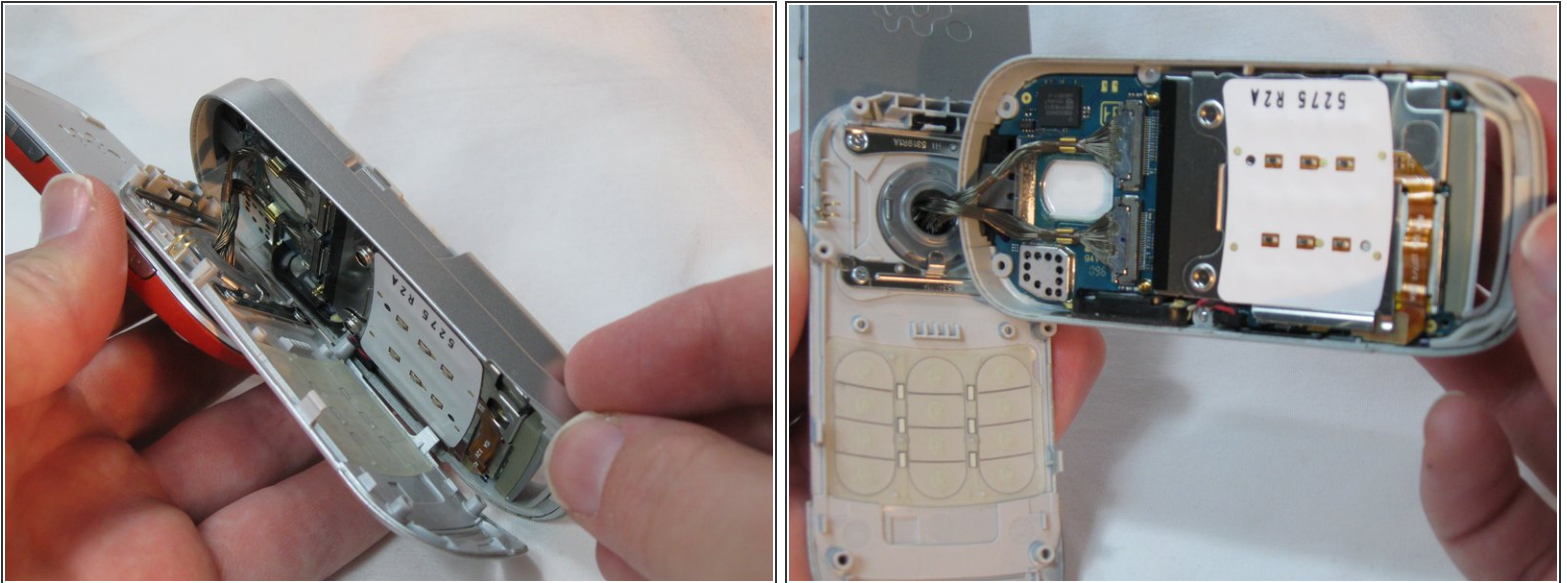
- Remove the two Torx screws from below the cover.
- These are T5 Torx screws, 8.6mm.

Step 7



- Gently work a spudger or a fingernail between the keypad face and the backplate.
- ⓘ The pieces are clipped together most tightly at the bottom loop section.

Step 8



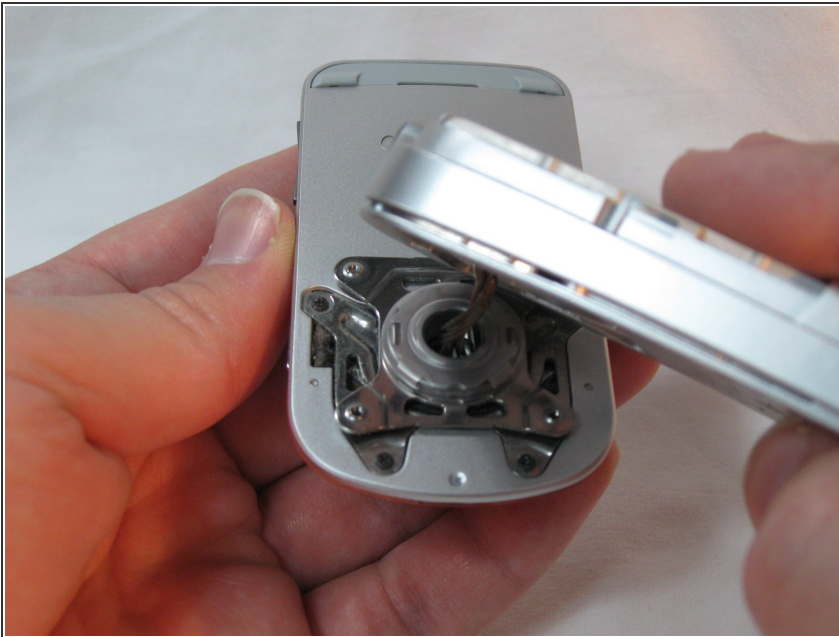
- Separate the keypad face from the backplate.
- ⓘ The keypad keys and the button component are both loose inside the phone, so take note of their orientation in case they become dislodged.
- ✦ Take note of the braided cord's state. Upon reassembly it should be returned to the same orientation.

Step 9



- Holding the backplate away from the swivel, remove the 4 small Phillips screws and both stamped struts from the swivel assembly.
- Note that only the bottom strut has a tab.
- The screws are Phillips, 2.9mm

Step 10



- The back housing is now disassembled, and the swivel assembly is revealed.

To reassemble your device, follow these instructions in reverse order.