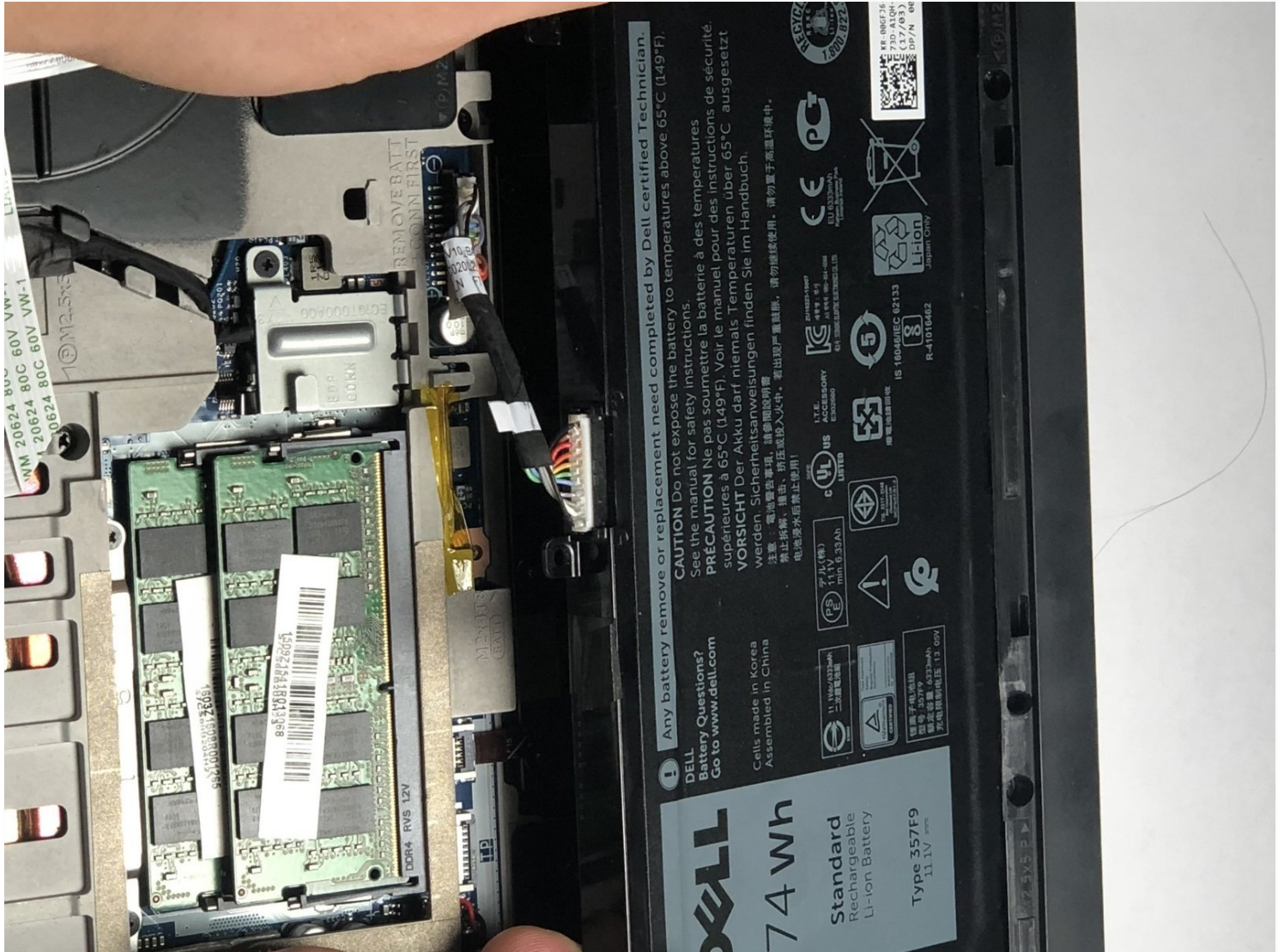




# Dell Inspiron 15-7567 Battery Replacement

Taking out the battery is easy to replace when...

Written By: Dallas Lamorie



# INTRODUCTION

Taking out the battery is easy to replace when needed. It may need to be replaced if the battery dies quickly.

**For your safety, discharge your battery below 25% before disassembling your device.** This reduces the risk of a dangerous thermal event if the battery is accidentally damaged during the repair. If your battery is swollen, [take appropriate precautions](#).



## TOOLS:

Phillips #1 Screwdriver (1)  
TR8 Torx Security Screwdriver (1)



## PARTS:

Dell Inspiron 15 357F9 Battery (1)

---

## Step 1 — Battery



Turn off laptop before beginning.

- Place the laptop upside down on a flat, stable surface.

## Step 2



- Remove the 3mm screw in the location shown, using a Phillips #1 screwdriver.

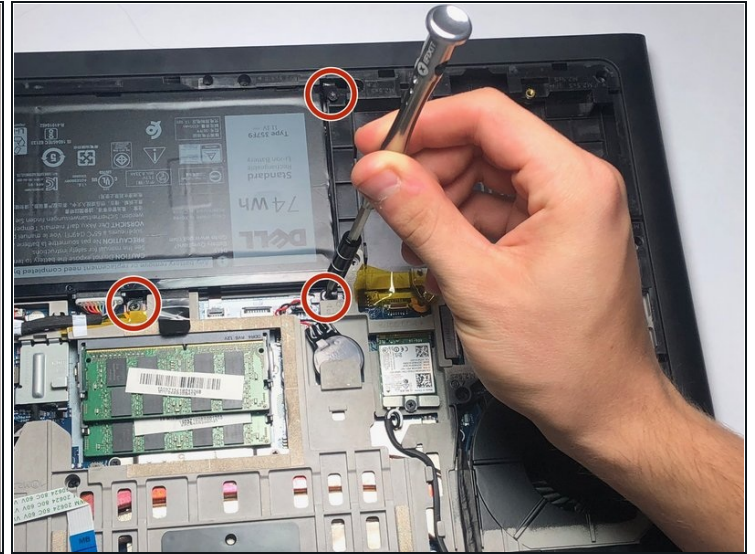
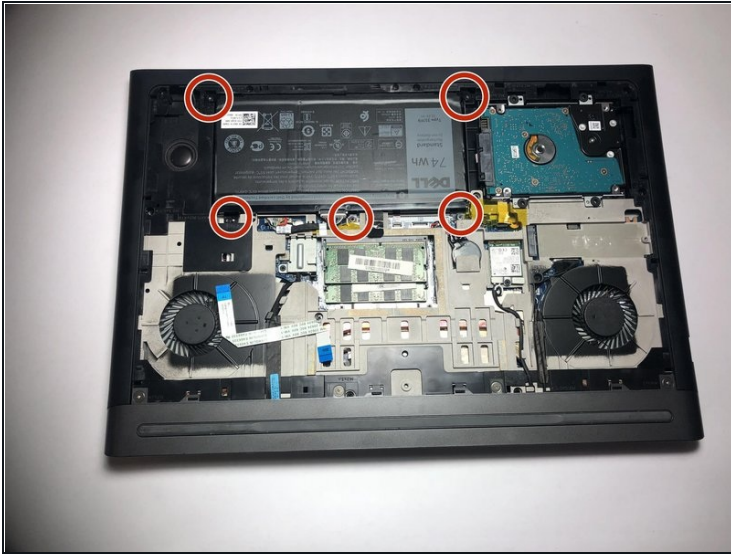
## Step 3



- Remove the panel from the sides and pull it out at an angle towards you.

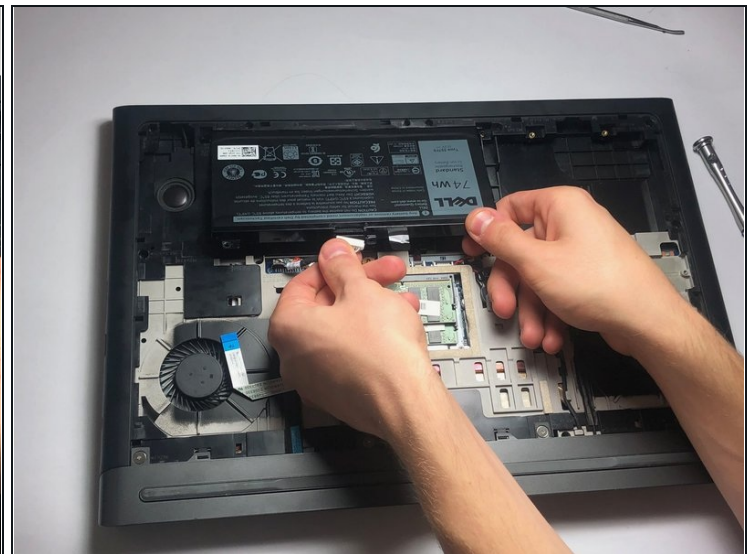
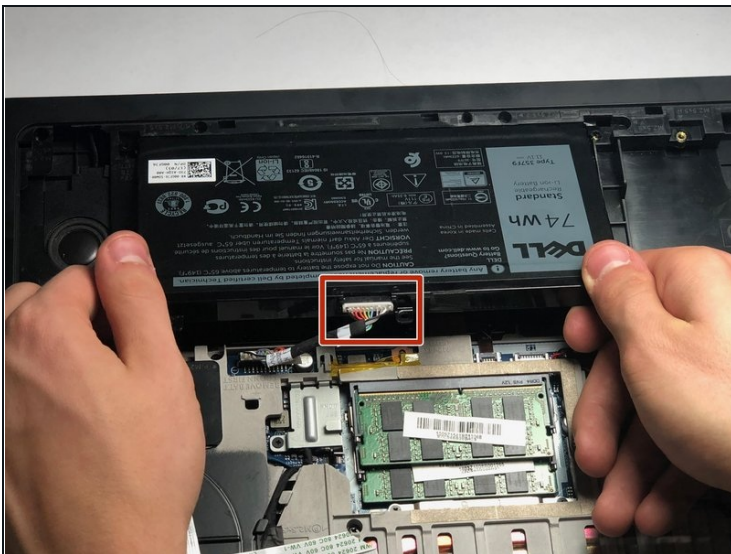


## Step 4



- Remove the five 3mm screws on the battery with a Torx (T8) screwdriver in the locations shown.

## Step 5



- Disconnect the power cord from the battery by using a pair of [tweezers](#), your fingers, or the opening tools from the iFixit pro tech tool kit.
- Pinch the clips on the left and right side while pulling on the cord at the same time.

## Step 6



- Pull the battery towards you.
- Make sure to pull at an upward angle.

---

To reassemble your device, follow these instructions in reverse order.