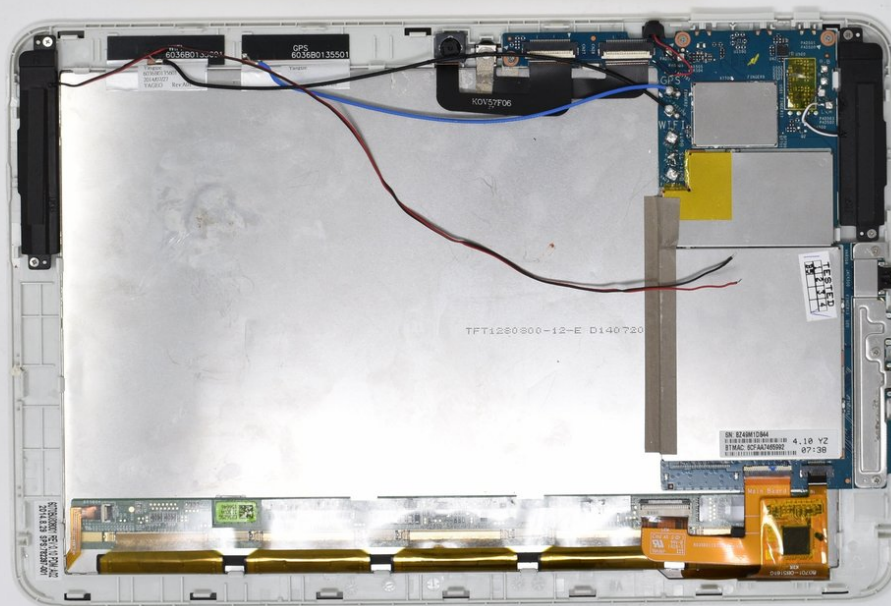




HP 10 2101 Battery Replacement

Follow this guide to replace the HP 10 2101 J6F00UA battery. This replacement could improve battery life or replace a faulty battery. Part No: 784326-001

Written By: Bryce Harmsen



INTRODUCTION

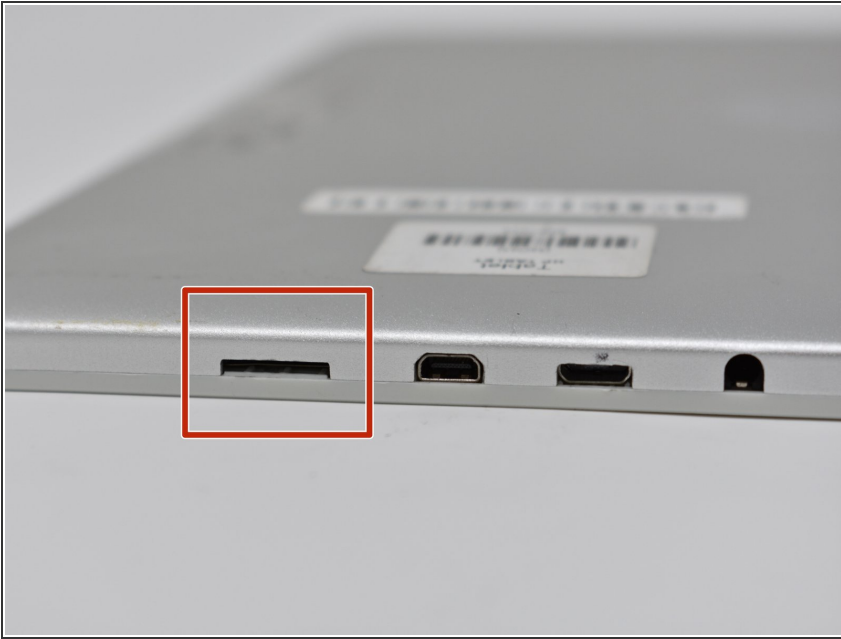
The battery is attached to the back of the device's display. In this guide, you will desolder the battery connections to the motherboard and remove the battery from the device. This guide requires soldering; please be careful and ventilate the room.



TOOLS:

- [iFixit Opening Tools](#) (1)
 - [Soldering Iron](#) (1)
-

Step 1 — Back Panel



- Identify the SD card port.

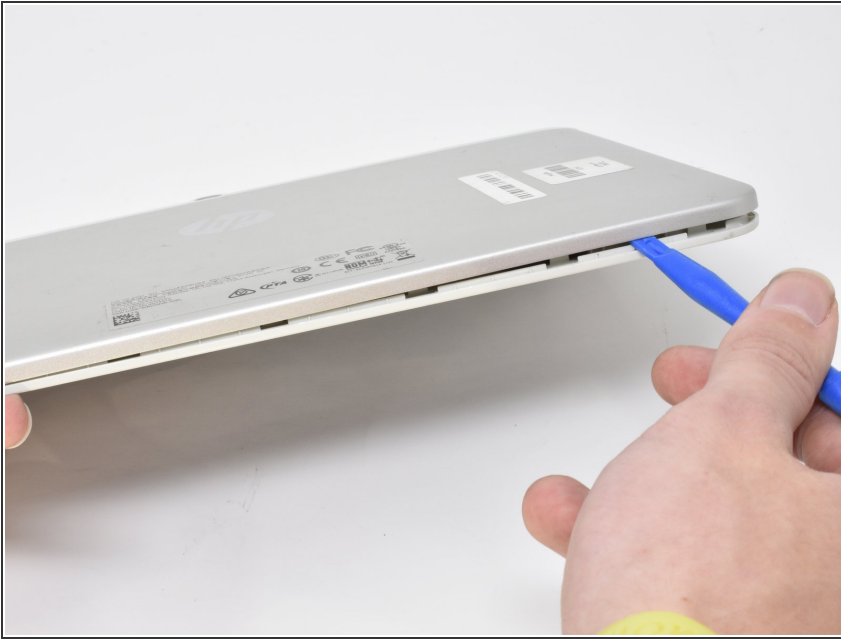
Step 2



- Insert the smallest plastic opening tool into the SD card port. Gently pry until the back panel separates from the screen panel.

⚠ Do not insert opening tool too far.
Avoid making contact with the metal inside the port.

Step 3



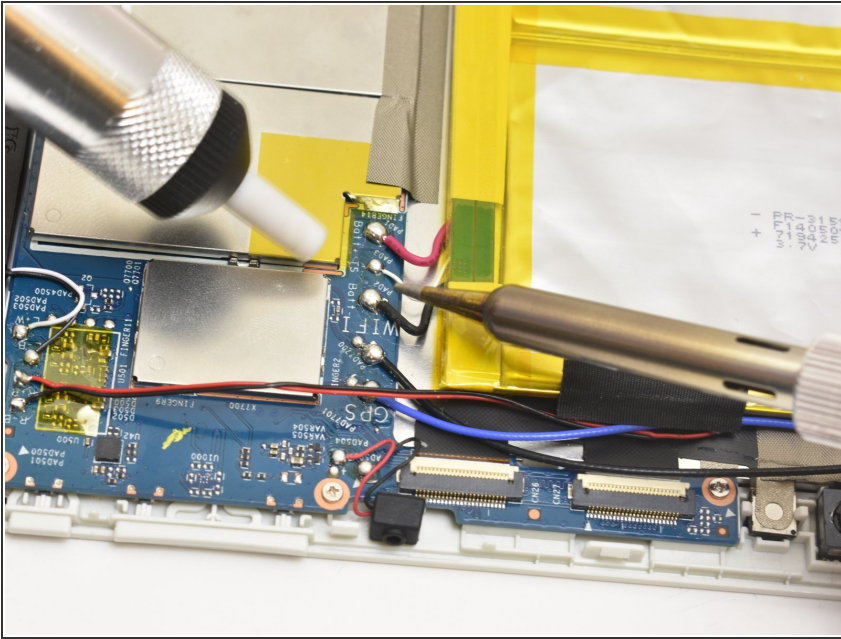
- Slide the opening tool along the seam between the back panel and the screen panel, prying the panels apart as you move around the edges.

Step 4



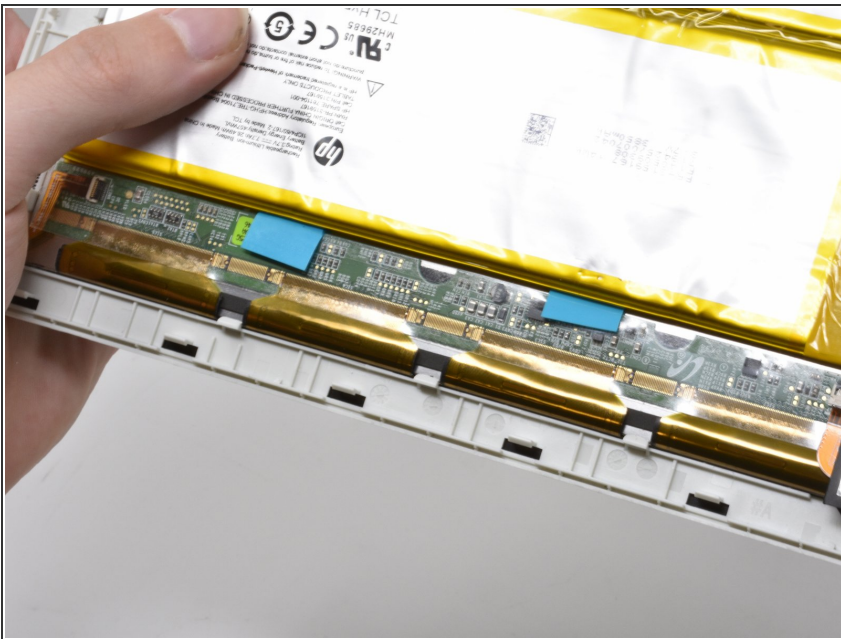
- Separate the back panel from the rest of the device.

Step 5 — Battery



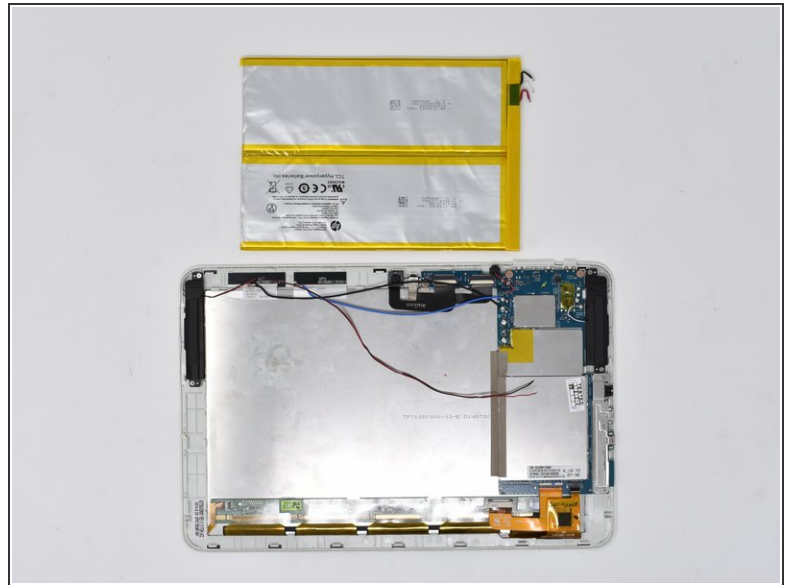
- Desolder the battery connectors from the motherboard.

Step 6



- Pull the bright blue-green tabs to remove the battery from the rest of the device.
- ⓘ Pulling the tabs may not fully disconnect the battery from the metal display casing.

Step 7



- If the previous step is unsuccessful, wedge the smallest plastic opening tool between the adhesive and the metal display casing.

⚠ Wedging may apply unsafe pressure on the battery. Be careful not to puncture the battery.

To reassemble your device, follow these instructions in reverse order.