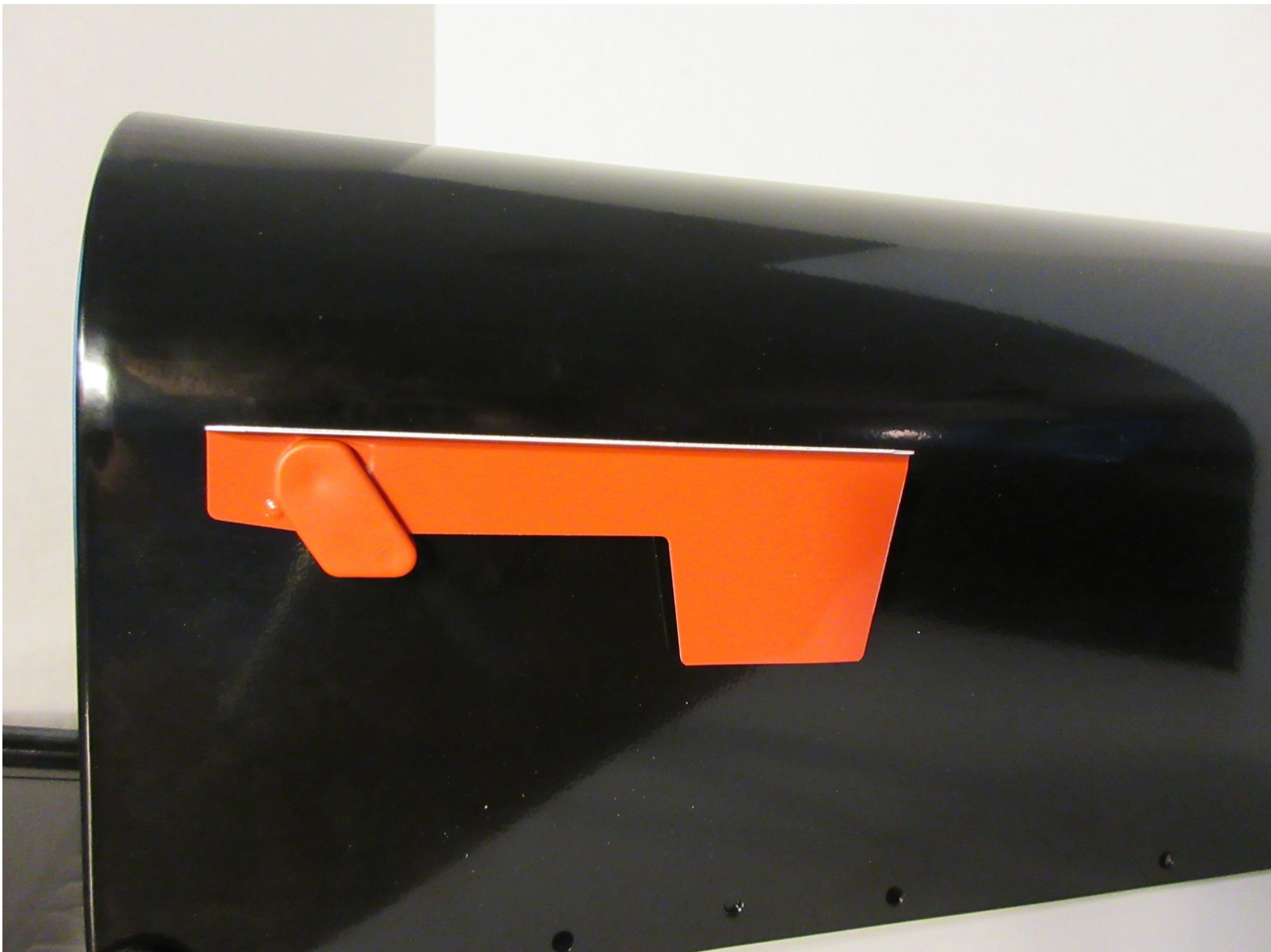




Mailbox Flag Replacement

This guide will show how to replace the flag on a mailbox.

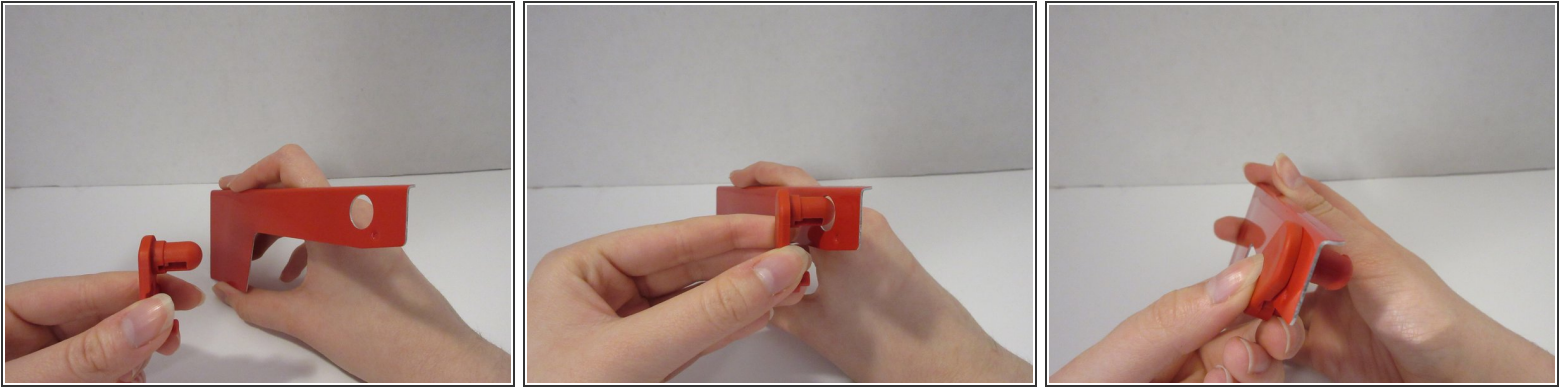
Written By: Ashley Fredricksen



INTRODUCTION

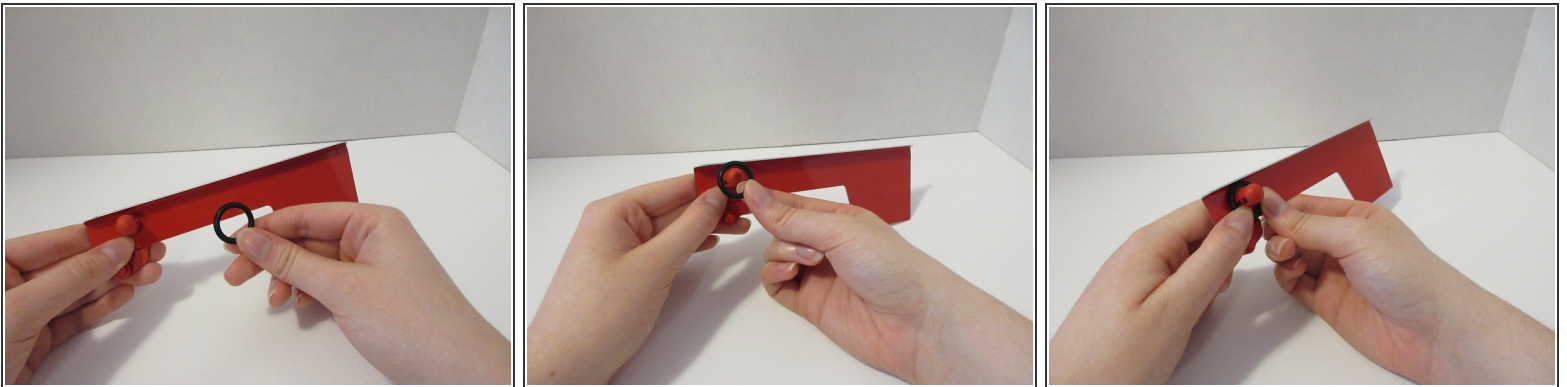
A damaged or old mailbox flag can make the entire mailbox look worn. Luckily, it is easy to replace just the flag.

Step 1 — Flag



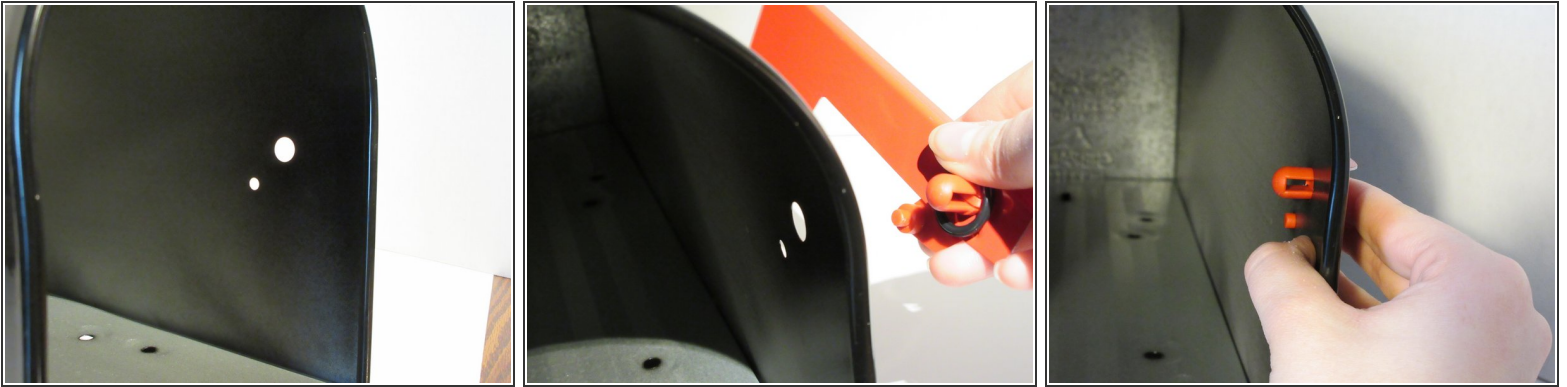
- Place the bracket into the flag - this will help to secure it to the mailbox.

Step 2



- Place the rubber o-ring onto the bracket.

Step 3



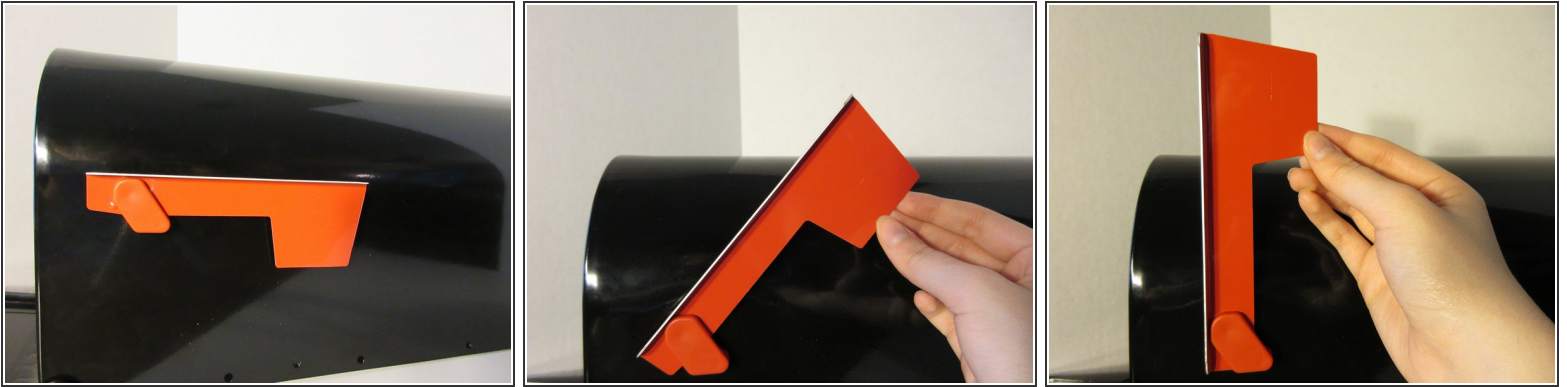
- Insert the bracket of the assembled flag through the holes on the outside of the mailbox.

Step 4



- Push the flag keeper through the bracket until the flag reaches the desired tightness.

Step 5



- You are finished! Stand your flag up to ensure it works and is at the desired tightness.
- If you would like your flag tighter, push the flag keeper in further.

To take the flag off your mailbox, follow these instructions in reverse order.