



# JBL Pulse 3 Speaker Replacement

This guide will accomplish replacing the speaker of the JBL Pulse 3.

Written By: Kaitlyn Greenfield



# INTRODUCTION

There are four speakers located on the base of the JBL Pulse 3 under the speaker grill.



## TOOLS:

- [iFixit Opening Tools](#) (1)
- [Phillips #0 Screwdriver](#) (1)
- [Phillips #1 Screwdriver](#) (1)
- [Phillips #2 Screwdriver](#) (1)
- [Tweezers](#) (1)
- [Flush Wire Cutters](#) (1)
- [Soldering Iron](#) (1)



## PARTS:

- [JBL Pulse 3 Speaker](#) (1)

## Step 1 — Speaker Grill



- Lay the JBL Pulse 3 on its side as shown in the picture.
- Use a plastic opening tool to lift the top right corner of the speaker grill. A small amount of force is necessary to remove the grill.

## Step 2



- Repeat step 1 for bottom right corner of speaker grill.

### Step 3



- After pulling the right side of the grill off, place thumb underneath grill as shown in the picture.
- Lift and pull straight out to pull grill off the posts.

### Step 4



- Repeat steps 1-3 for the left side of the speaker grill on the JBL Pulse 3. The speaker grill should now be completely removed from the JBL Pulse 3.



## Step 5 — Outside Casing



- Use a Phillips #00 screwdriver to remove the six black 6mm screws on the inside of the top of the bottom section.

## Step 6



- Turn the JBL Pulse 3 right-side up and unscrew the top ring of the device. A small amount of force and/or a cotton cloth may be necessary to remove this piece.

## Step 7



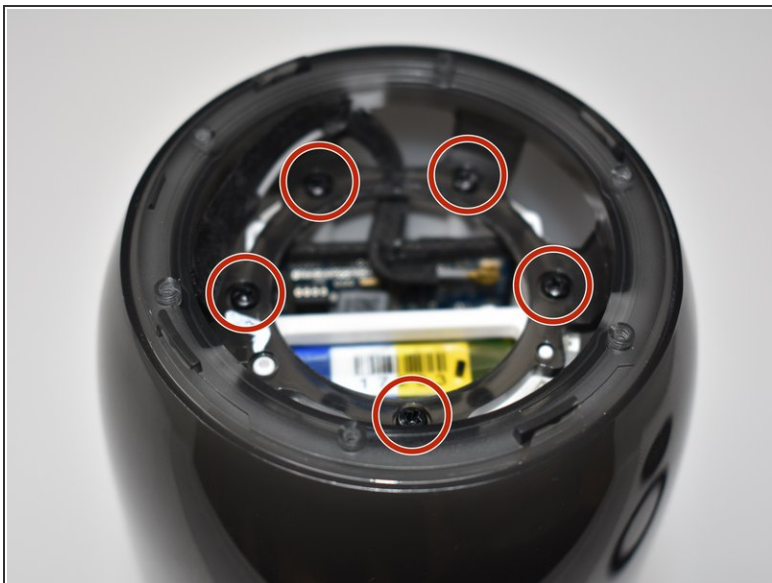
- Remove the six 5mm screws on top of the JBL Pulse 3 with a Phillips #0 screwdriver.

## Step 8



- Pull off the top disc of the JBL Pulse 3.

## Step 9



- Remove the five 7mm screws on the inside of the JBL Pulse 3 with a Phillips #1 screwdriver.

## Step 10



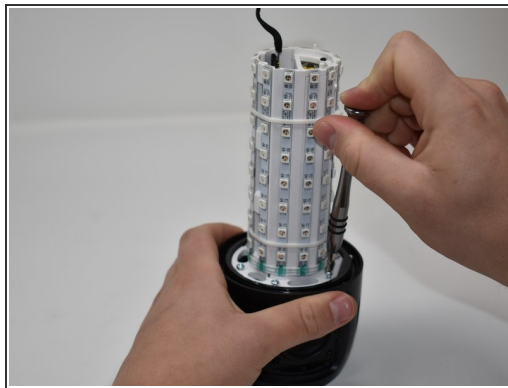
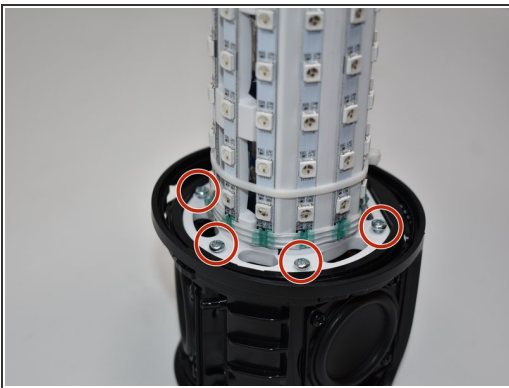
- Peel off black, taped-on electrical lead from the inside side of the JBL Pulse 3.

## Step 11



- Pull the top section of the JBL Pulse 3 up. The outside casing to the JBL Pulse 3 should now be removed.

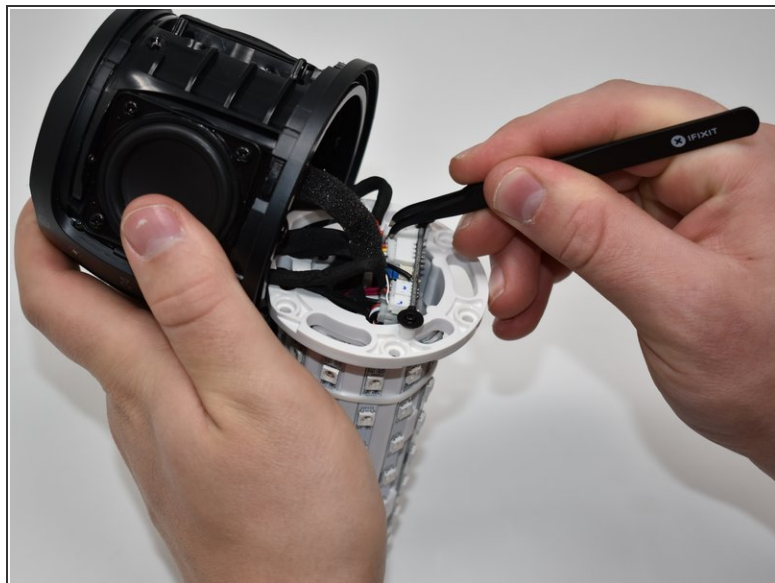
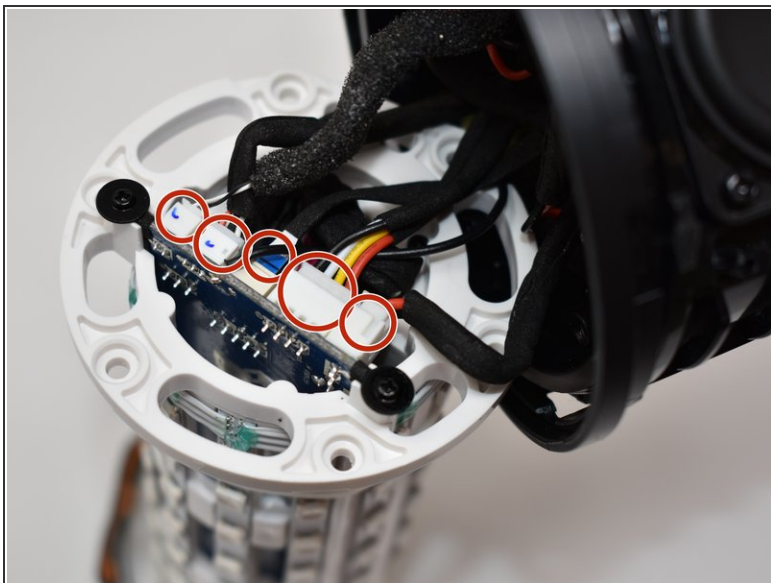
## Step 12 — LED Light Display



- Use a Phillips #2 screwdriver to remove the six 11 mm screws that circle the bottom of the LED light display.
- Pull the LED light display off of the JBL Pulse 3 base.



## Step 13



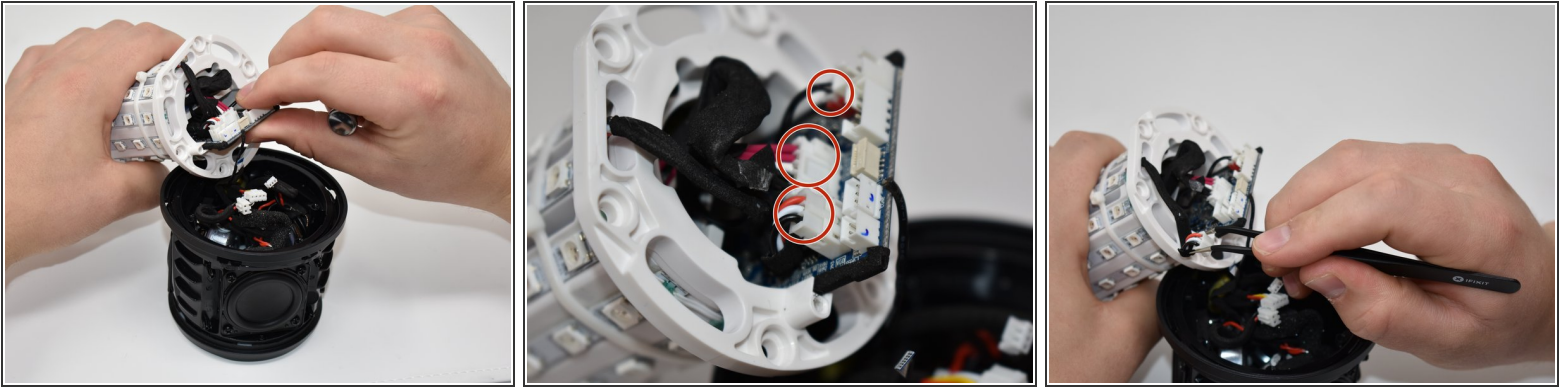
- Use tweezers to pull the five connections off of the LED light display.

## Step 14 — Motherboard



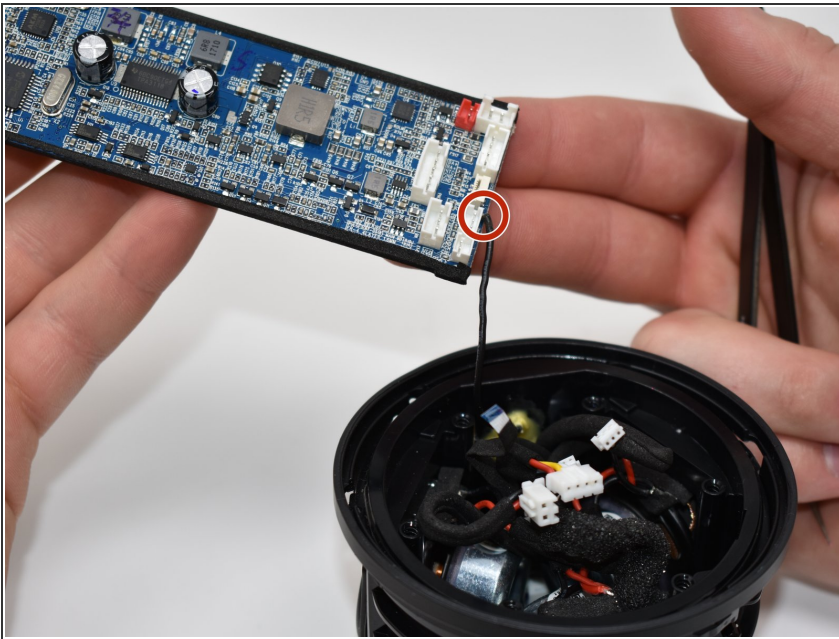
- Using a Phillips #0 screwdriver, remove the two black 8mm screws on the bottom of the LED light display.

## Step 15



- Pull out the motherboard slightly from the LED light display as shown. Using tweezers, unplug the three connections attached to the motherboard.

## Step 16



- Pull the rest of the motherboard out from the LED light display.
- Using wire cutters, snip the black wire connecting to the base of the JBL Pulse 3 at the base of the motherboard. The motherboard should now be removed from the JBL Pulse 3.



## Step 17 — Speaker



- Using a Phillips #2 screwdriver, remove the four 10mm screws on the corner of the speaker on the side of the base of the JBL Pulse 3.

## Step 18



- Pull out the speaker and cut the black and red wire with wire cutters. The speaker should now be removed from the JBL Pulse 3.

To reassemble your device, follow these instructions in reverse order.

**Note:** To finish replacing the speaker, you must solder both wires back on to the new speaker.