



JBL Charge 3 Speaker Replacement

This guide will teach you how to replace your JBL Charge 3 speakers.

Written By: Aidan Hays



INTRODUCTION

The JBL Charge 3 has two front speaker that can be replaced individually or together. If your speakers are blown out replace them with this guide.



TOOLS:

- [iFixit Opening Tool](#) (2)
- [Phillips #1 Screwdriver](#) (1)
- [Tweezers](#) (1)
- [Phillips #000 Screwdriver](#) (1)



PARTS:

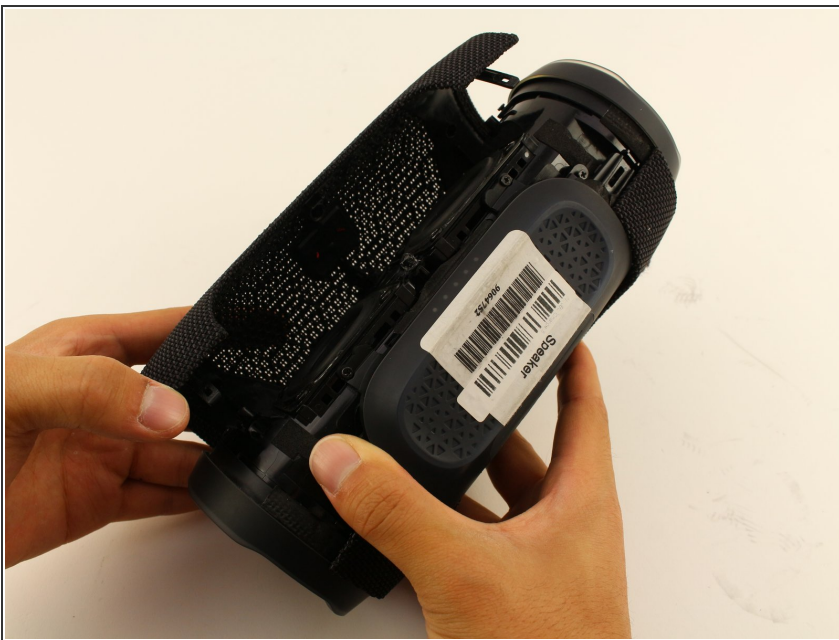
- [JBL Charge 3 Speaker](#) (1)

Step 1 — Front Cover



- Turn your speaker upside down and insert the plastic opening tool vertically into the slit in the front cover.
- Slowly pull the plastic opening tool outward to remove the four clips holding the covering in place.
- Repeat this process for all four edges of the front cover.

Step 2



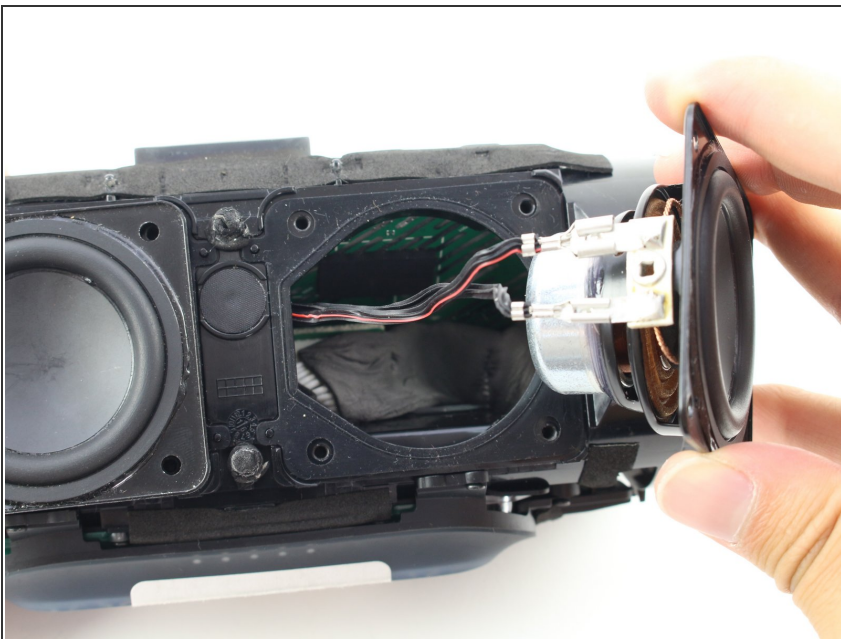
- Pull apart your cover gently from both sides and remove it from the speaker housing.
- ✦ The inside of the front cover has holes that must match with their corresponding pins on the speaker housing for proper reassembly.
- ⚠ Removing the Front Cover does not affect the waterproof seals of the device. However, removing any further disassembly of your speaker will require removing waterproof seals and gaskets. Your device may no longer be waterproof after these have been altered.

Step 3 — Speaker



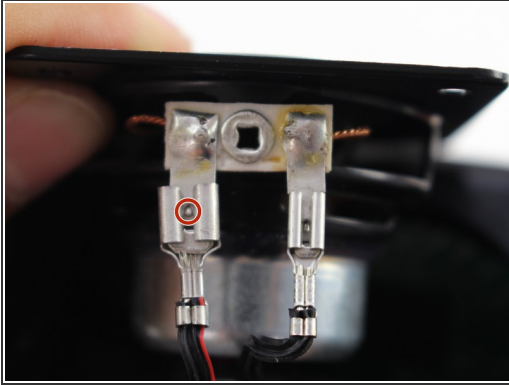
- Remove the eight 10mm Phillips #1 screws from around the two front speakers.

Step 4



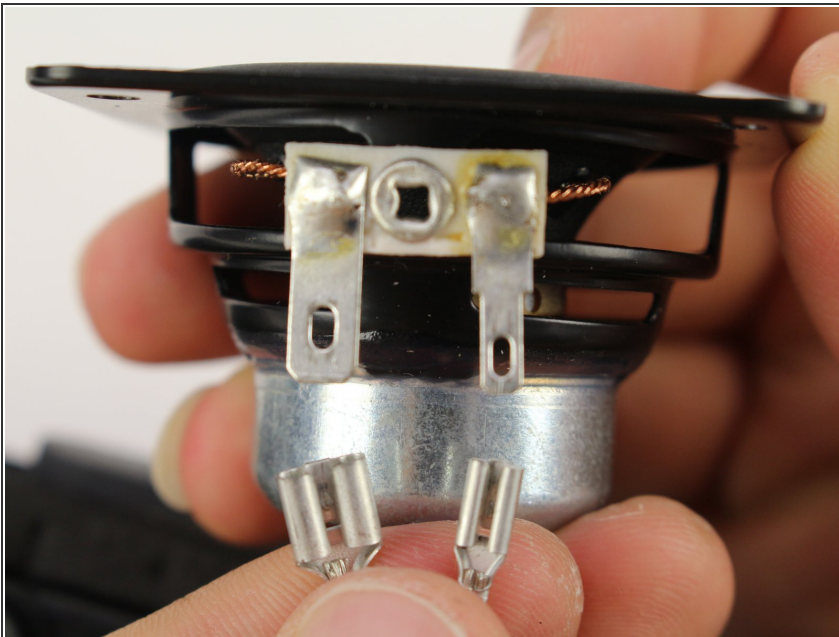
- Pull gently on one of the speakers so it is outside of the housing. Be careful as it is still attached with the wires to the motherboard.

Step 5



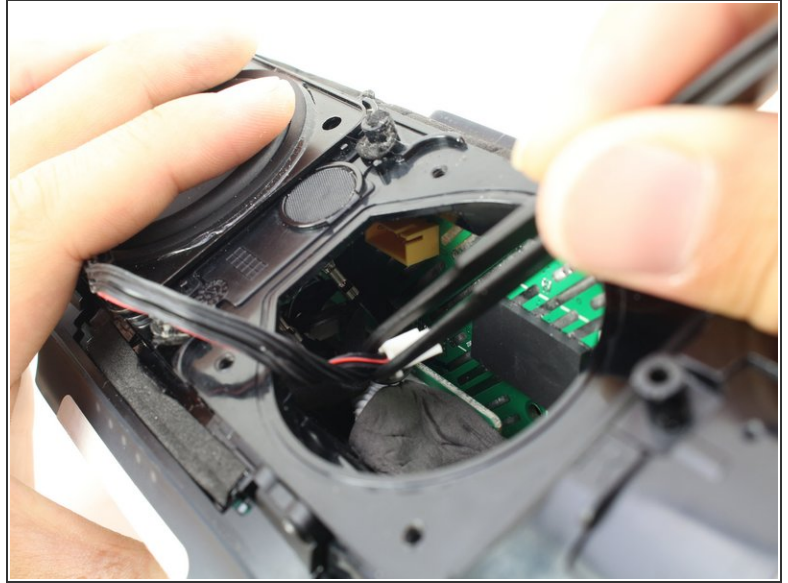
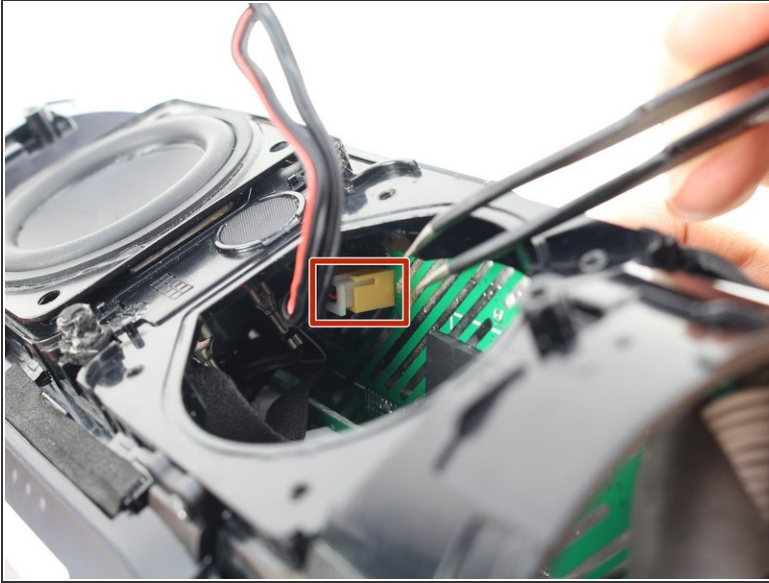
- Press the small metal tab on the speaker connector with a Phillips #000 screwdriver and gently pull the connector apart.

Step 6



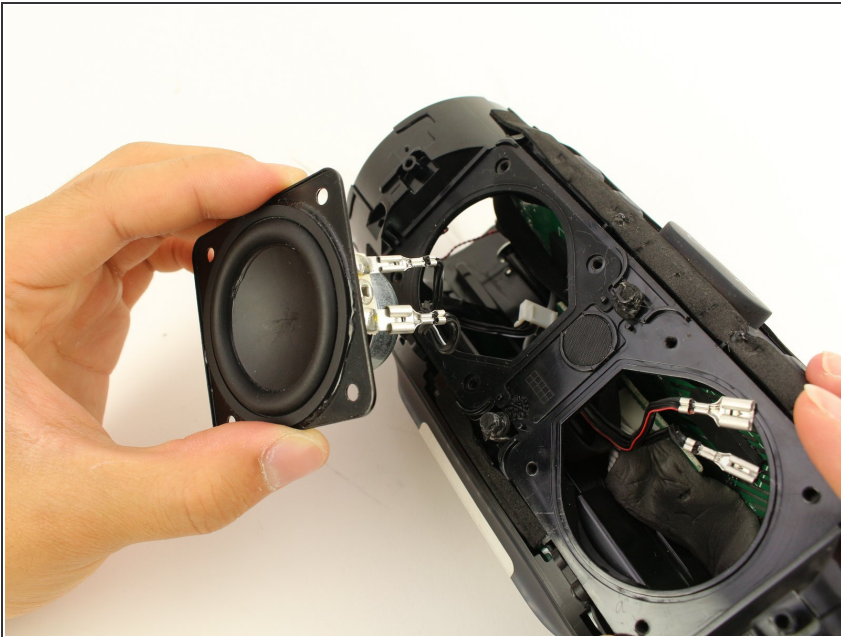
- Repeat the previous step for the second connector.

Step 7



- Grab the bundled cable connector that joins the speakers to the motherboard with tweezers. Gently pull the connector free.

Step 8



- Now that the second speaker is disconnected from the motherboard, pull the speaker and wires out of the housing.

To reassemble your device, follow these instructions in reverse order.