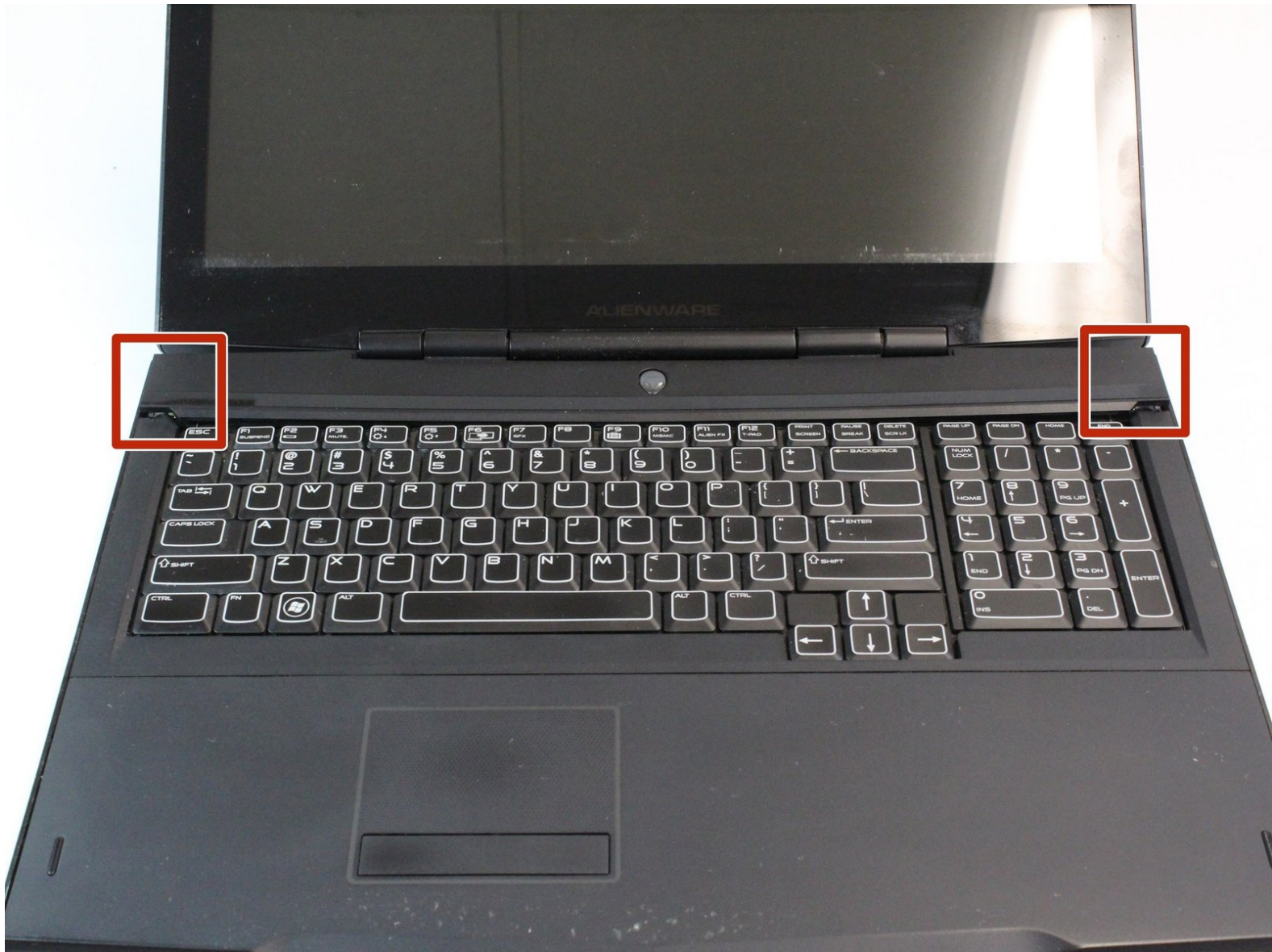




# Alienware M17x P01E Center Control Cover Replacement

Removing the center control cover allows access to remove the Alienware M17x keyboard and graphics cards.

Written By: Grant Dolmat



---

## INTRODUCTION

Use this guide to remove the central control cover to access the keyboard and graphics card.


---

### TOOLS:

- [Phillips #1 Screwdriver](#) (1)
  - [Spudger](#) (1)
  - [Phillips #0 Screwdriver](#) (1)
-

## Step 1 — Battery



 Please power off the computer and deplete the battery before attempting the following step.

## Step 2



- Press down on the battery latch and slide it to the left.
- Lift the battery out once it pops out.

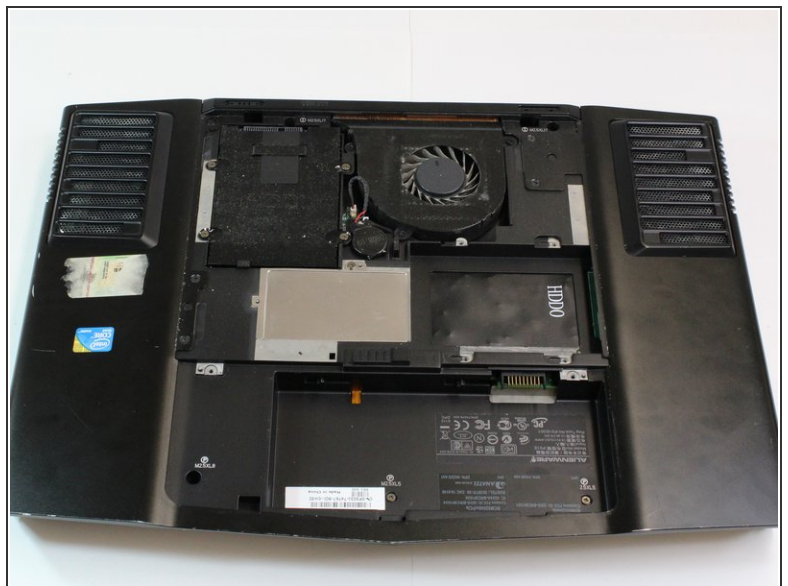


## Step 3 — Compartment Door



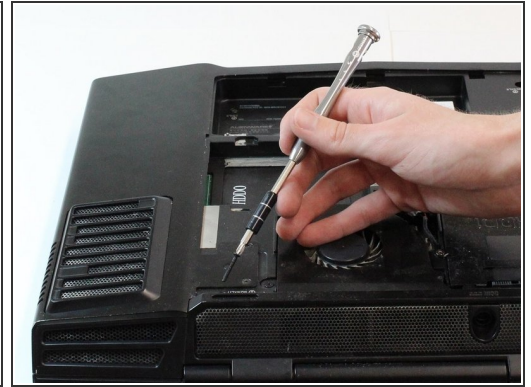
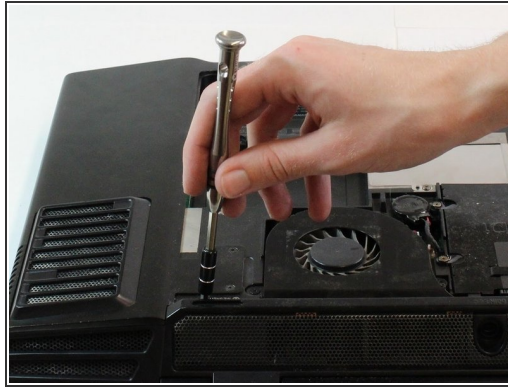
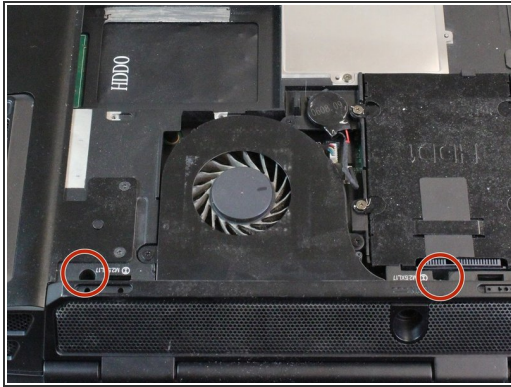
- Loosen the two silver Phillips #1 screws.
- ⓘ The screws are held to the compartment door by a washer and cannot be removed.

## Step 4



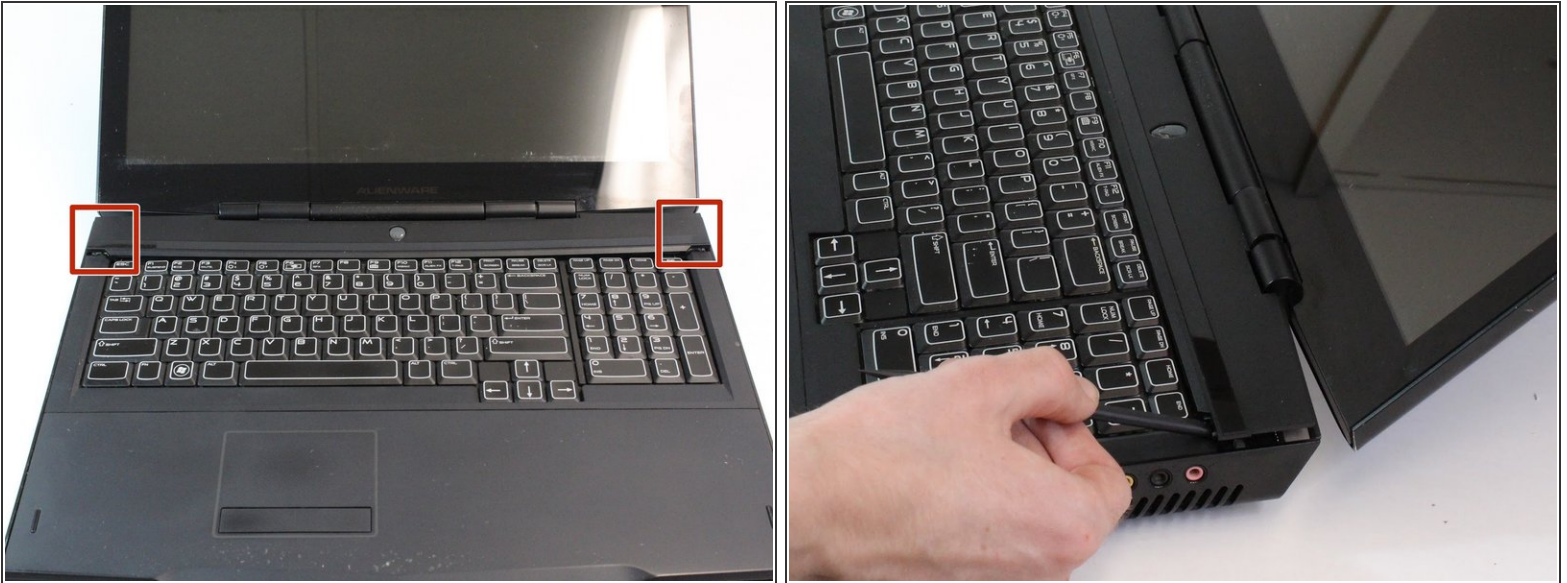
- Use your hand to gently lift and remove the compartment door.

## Step 5 — Center Control Cover



- Remove the two 2mm Phillips #0 screws from the recesses on the left and right side of the processor fan.

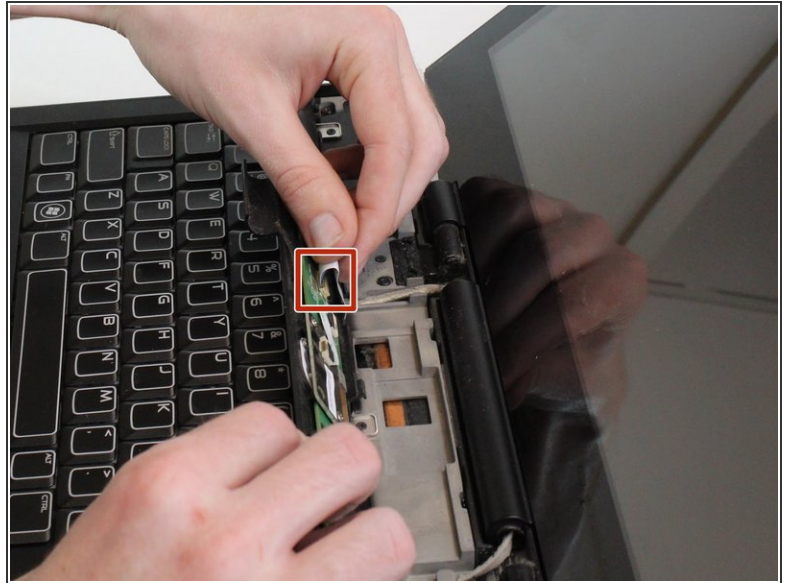
## Step 6



- Turn the laptop top side up and fully open the display.
- ⓘ The center control panel is between the display and the keyboard. Fully opening the display ensures that there is enough room to pry and lift the center control panel.
- Pry the center control panel up from its left and right edges with the Spudger.
- ⚠ The center control panel may require a decent amount of force to pry free. Do not immediately lift the panel from the laptop once it has been pried free. A cable is connected from the laptop to the center control panel.



## Step 7



- Lift the center control panel from the laptop.
- Tilt the center control panel away from the display carefully.
- Lift the latch open to remove the cable connecting from the laptop to the center control panel.

To reassemble your device, follow these instructions in reverse order.