



# Altec Lansing VersA Smart Speaker Head Replacement

This guide will show how to remove and replace the speaker heads in your Altec Lansing VersA Smart.

Written By: Rachael Hopp



---

## INTRODUCTION

If you are having issues with sound quality, this guide will show you how to remove the two speakers found within your device.

---

### TOOLS:

- [4mm Nut Driver](#) (1)
  - [iFixit Opening Tools](#) (1)
  - [Phillips #1 Screwdriver](#) (1)
  - [Magnetic Project Mat](#) (1)
-

## Step 1 — External Panels



- Remove external rubber cover.

## Step 2



- Use blue plastic opening tool to remove the external speaker face by placing it in the slight opening at the bottom.
- Use a lever motion, push the tool down, lifting the speaker face.
- Use fingers to grip and remove speaker face.
- Repeat on reverse side to remove the second speaker face.



### Step 3



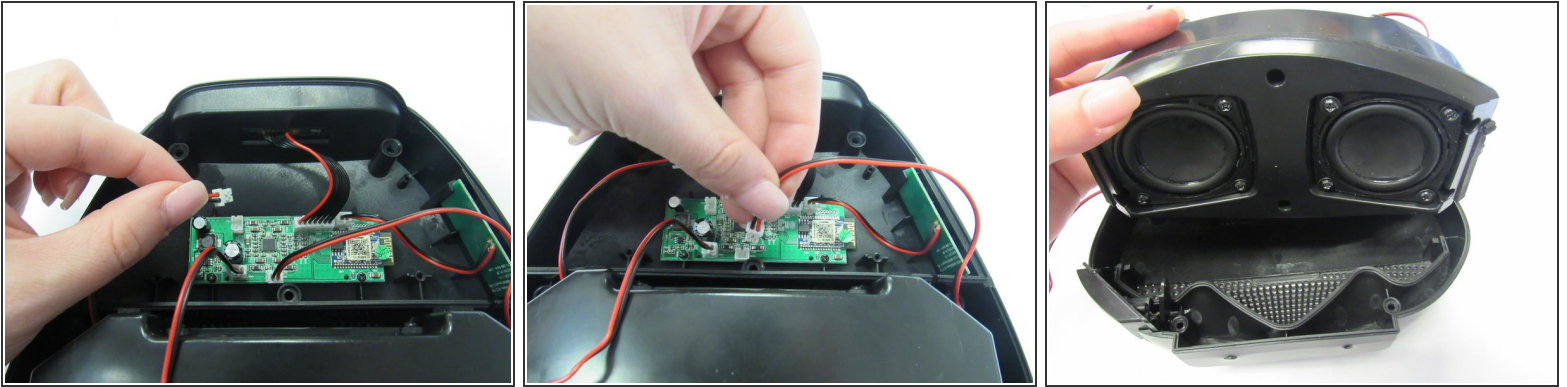
- Orient speaker so volume buttons are facing away from you, and Bluetooth and power buttons are on the left-hand side.
- Remove the seven 14mm screws using the Phillips #1 screwdriver.

### Step 4



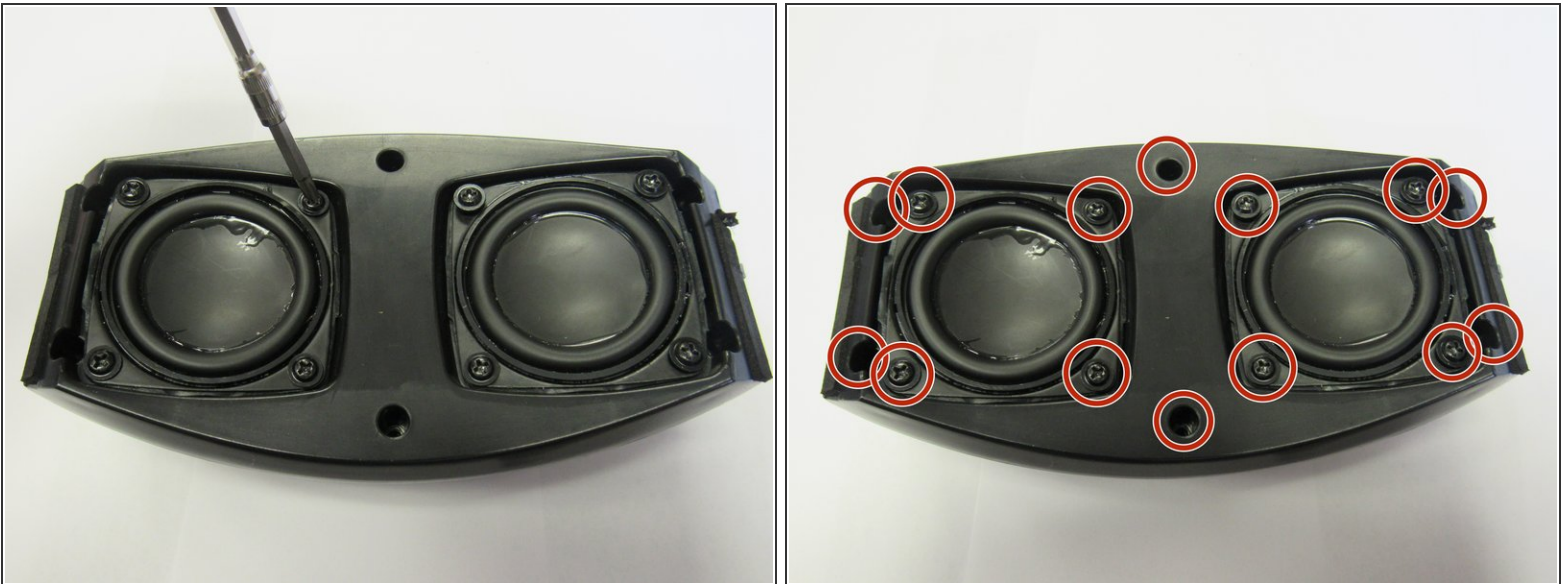
- Reorient speaker so Bluetooth and power buttons are now on the right-hand side.
- Separate the two panels along the crease.
  - Blue plastic opening tool may be needed to separate panels.
- Remove the panel with no buttons to expose internal area of the device.
- ☑ Motherboard and all internal components are under this panel.

## Step 5 — Speaker Head



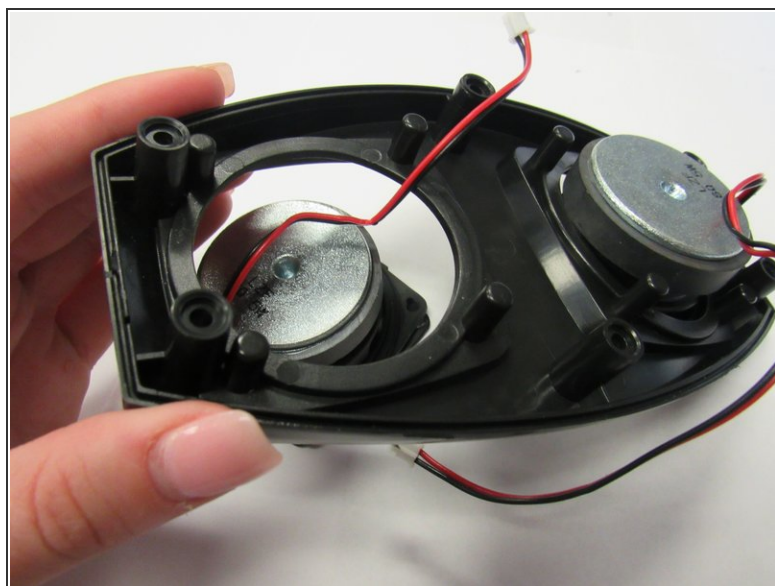
- Detach the two wire connections from the motherboard.
- Remove the speaker bed from the internal cavity of the device.

## Step 6



- Orient speaker bed so the speaker heads are facing up.
- Remove the two 14mm screws using the Phillips #1 screwdriver.

## Step 7



- Separate the two plastic pieces of the speaker bed.
- Flip the top plastic piece so the speaker heads are face down.
- ⓘ Speaker heads may fall out on their own.
- Remove the two speaker heads.

To reassemble your device, follow these instructions in reverse order.