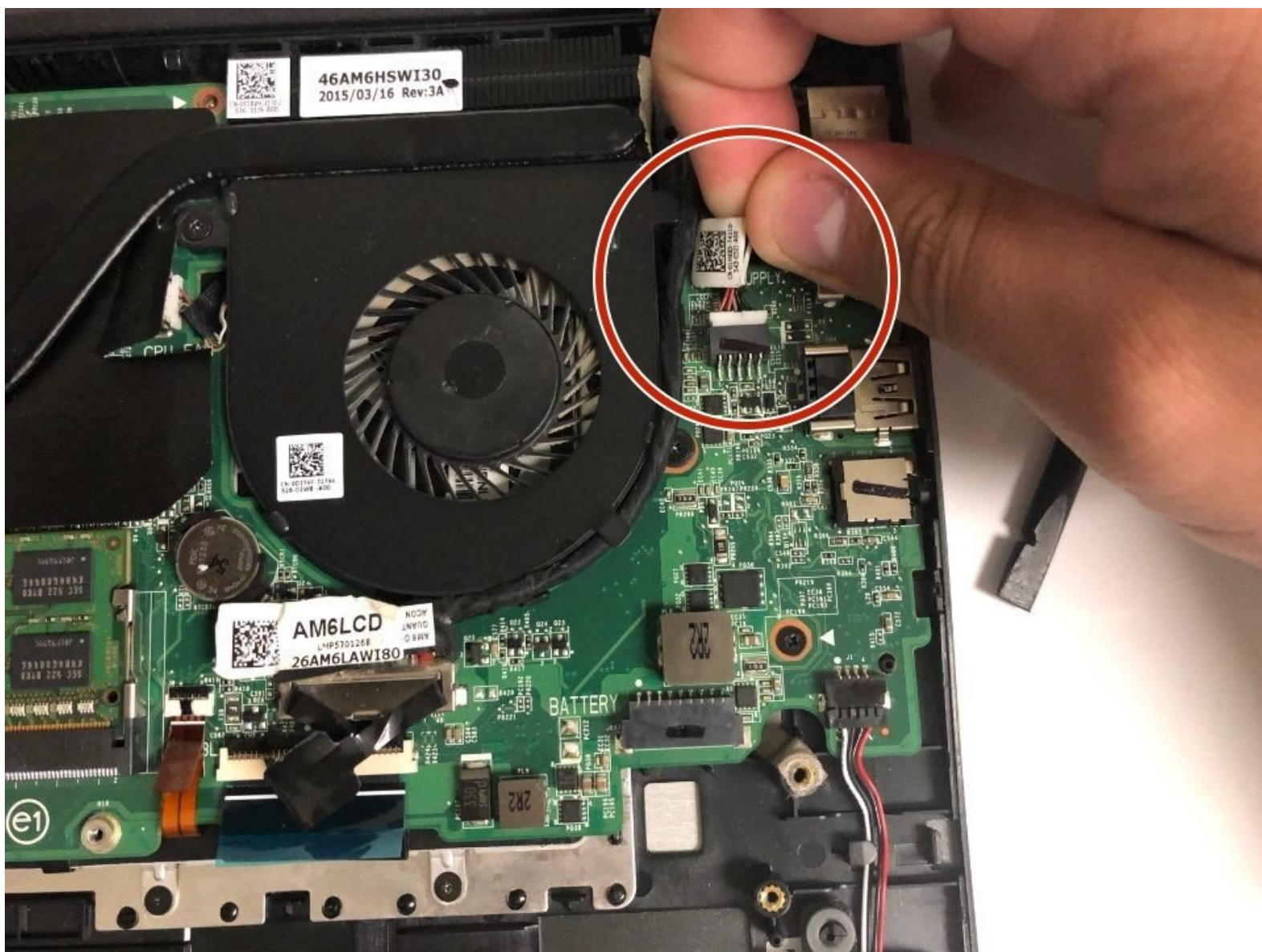




Dell Inspiron 15-7548 Power Port Replacement

This guide will walk you through how to remove...

Written By: Christopher Fisher



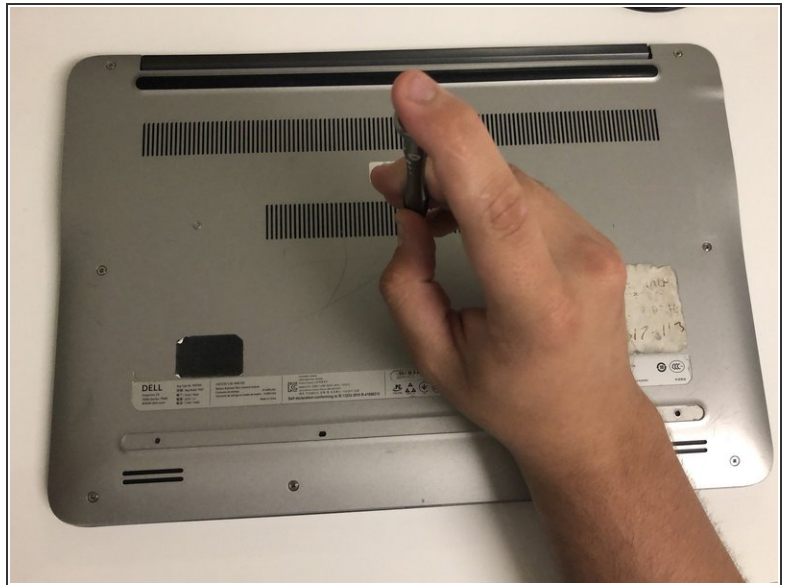
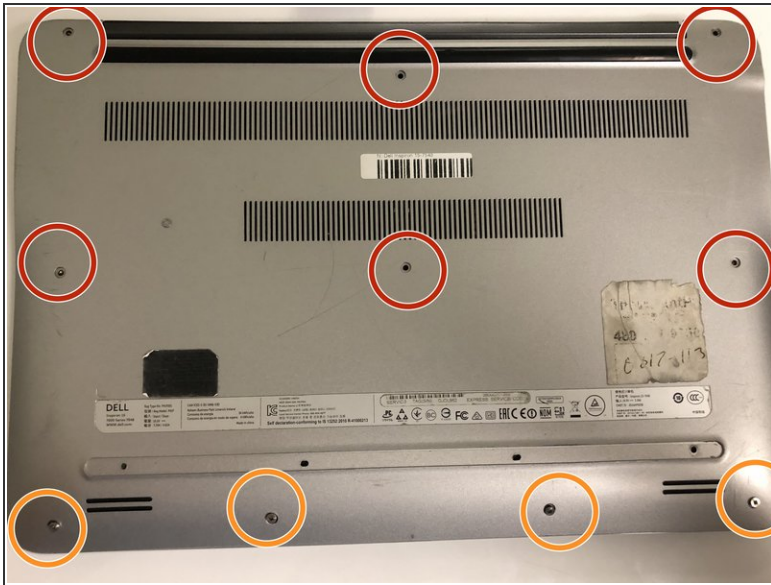
INTRODUCTION

This guide will walk you through how to remove the power port in your Dell Inspiron 15-7548.

TOOLS:

- [Phillips #1 Screwdriver](#) (1)
 - [Spudger](#) (1)
-

Step 1 — Back Panel



- Remove the six 6 mm screws from the back panel with a Phillips #1 screwdriver.
- Loosen the four captive screws at the bottom using a Phillips #1 screwdriver.
- ⓘ The four screws on the bottom are captive screws and cannot be removed.

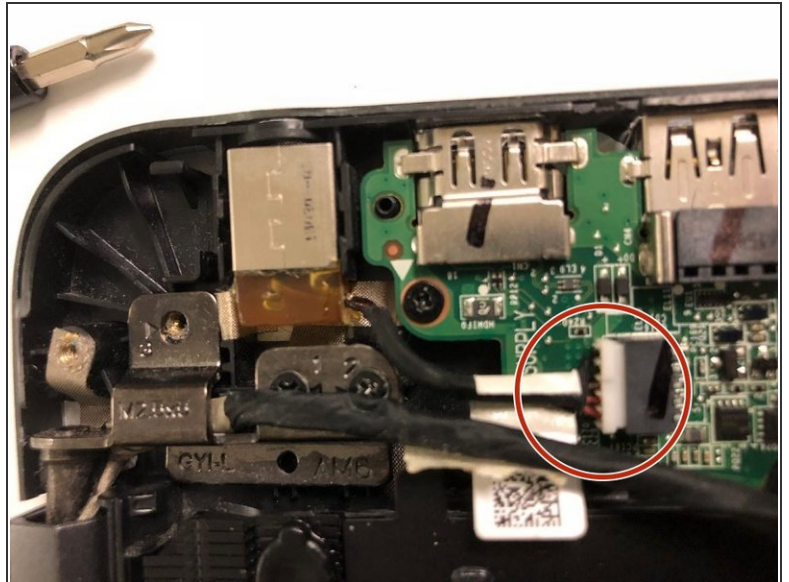
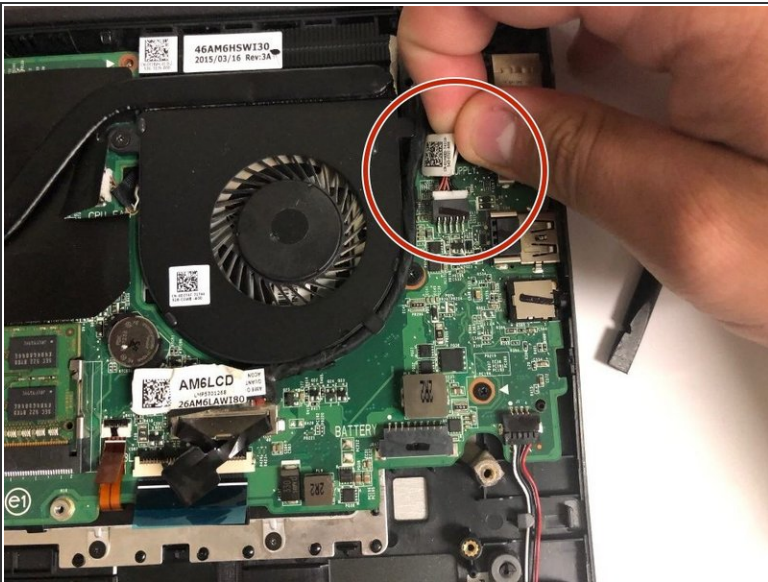
Step 2



- Pry out the back panel using the flat head side of the spudger.

⚠ Do not insert the spudger more than half an inch when separating the bottom and right side of the back panel.

Step 3 — Power Port



- Grab the wires and lightly pull to remove the power port from the motherboard.

To reassemble your device, follow these instructions in reverse order.