



Power Macintosh G3 Blue and White PRAM Battery Replacement

Is your Power Mac not displaying the correct time? Issues with the PRAM in general? Replacing the PRAM battery might help!

Written By: Aaron Cooke





PARTS:

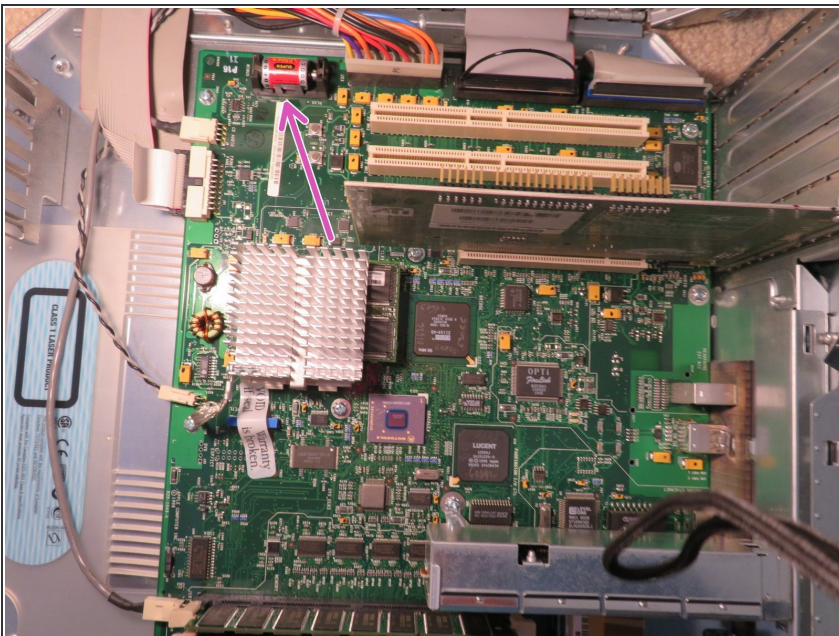
- [Power Macintosh G3 PRAM Battery](#) (1)
-

Step 1 — PRAM Battery



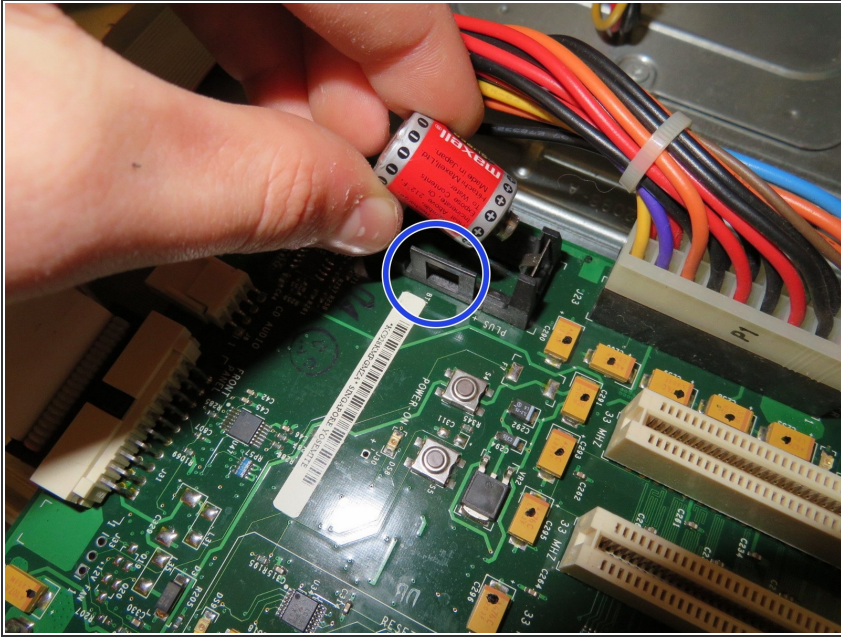
- i** Unfortunately, I am unable to provide OG content for this step due to my Power Mac's outer case being severely damaged. Once I get my new outer case I will update this step.
- Lift the latch on the right side panel to reveal the internals.
- i** If you are doing this on a hard surface I highly suggest you put a mat down between the door and the ground to prevent scratches.

Step 2



- Locate the PRAM battery.
- i** The PRAM battery is usually at the top right corner of the logic board.

Step 3



- Lift the battery out of the PRAM battery holder.
- What I did to free the PRAM battery is I broke the plastic battery holder identical to the circled one on the other side of the PRAM battery, then I was able to free the PRAM battery. I couldn't get the PRAM battery to budge without breaking the holder.
- ⓘ Don't be worried, breaking the plastic holder won't cause much damage nor will it hinder the ability for the PRAM battery to stay in place. **Only break one holder, though.**

To reassemble your device, follow these instructions in reverse order.