



ZTE ZFive G LTE Volume and Power Button Replacement

In this guide, we will remove the power and volume button covers.

Written By: Julian Mendoza



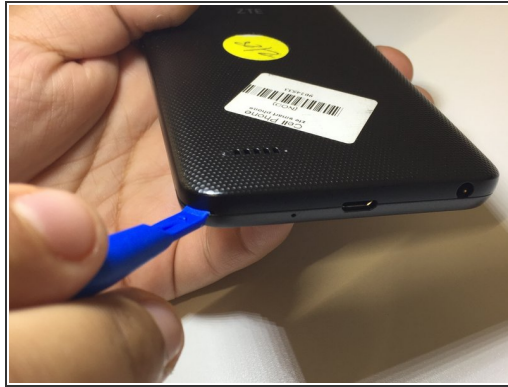
INTRODUCTION

This is not a guide for replacing the switch assembly, only for replacing the plastic covers to the buttons.

TOOLS:

- [iFixit Opening Tools](#) (1)
 - [Tweezers](#) (1)
 - [JIS #000 Screwdriver](#) (1)
-

Step 1 — Volume and power button



- Remove back cover of the device from the crease of the bottom left corner using opening tool or fingernail.

Step 2



- Remove the battery with an opening tool or fingernail.

Step 3



- Unscrew all 16 screws from the mid-frame with a J000 screwdriver.

Step 4



- Being careful with the device, gently pull up the device body tugging from the inside of the device.
- Be sure to pull away from the device.

Step 5



- Carefully use a pair of bent nose tweezers to pull out the button cover. It should come out easily.

To reassemble your device, follow these instructions in reverse order.