



# Fujifilm FinePix HS30EXR Lens Replacement

This guides is meant to be used with the...

Written By: Andrew Scouten



# INTRODUCTION

This guide is meant to be used with the intention to replace the lens.

Warning: The lens is very fragile; any scrape or fingerprint could result in a unusable lens. Take great caution in the replacement of the lens.

---

## TOOLS:

[Metal Spudger](#) (1)  
[Soldering Iron 60w Hakko 503F](#) (1)  
[Phillips #00 Screwdriver](#) (1)

## PARTS:

[Fujifilm Finepix HS30EXR Lens](#) (1)

---

## Step 1 — Frame



- Flip the camera so that the bottom is facing upwards.
- With the Phillips #00 screwdriver, remove all four screws.

## Step 2



- Flip the camera so that it is now on the right side.
- With the Phillips #00 screwdriver, remove all four screws.

## Step 3



- Flip the camera so that it is now on the left side.
- Move or remove the flap hiding the camera ports.
- With the Phillips #00 screwdriver, remove all screws.

## Step 4



- Flip the camera so that it is now on the top side.
- With a spudger, pry off the highlighted metal piece of the camera.

## Step 5



- With the Phillips #00 screwdriver, remove all four screws.

## Step 6



- Pull the LCD screen up and out of the way.
- With the Phillips #00 screwdriver, remove the screws.

## Step 7



- With a spudger, pry off the frame.
- ① If the frame does not easily dislodge after a few attempts, ensure that all screws are taken out.



## Step 8 — Motherboard



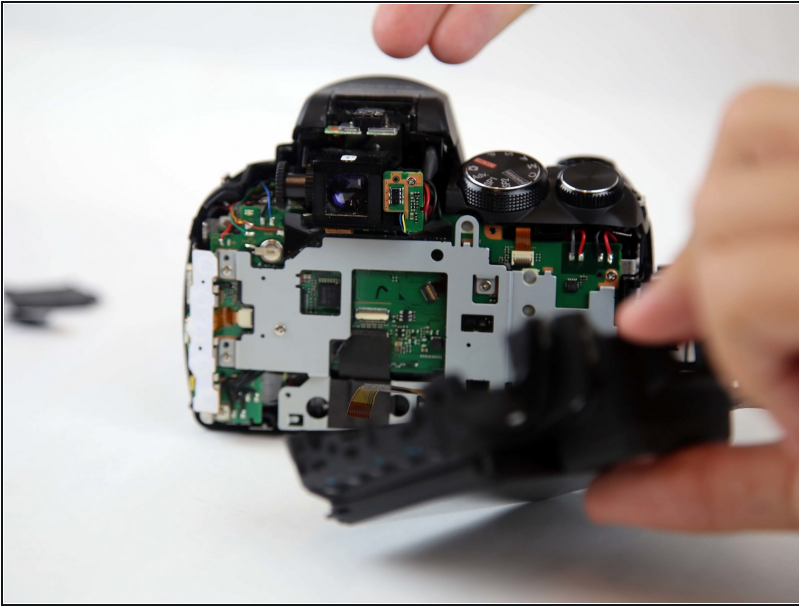
- Slowly and carefully pull the frame away to have a better view of the inside.

## Step 9



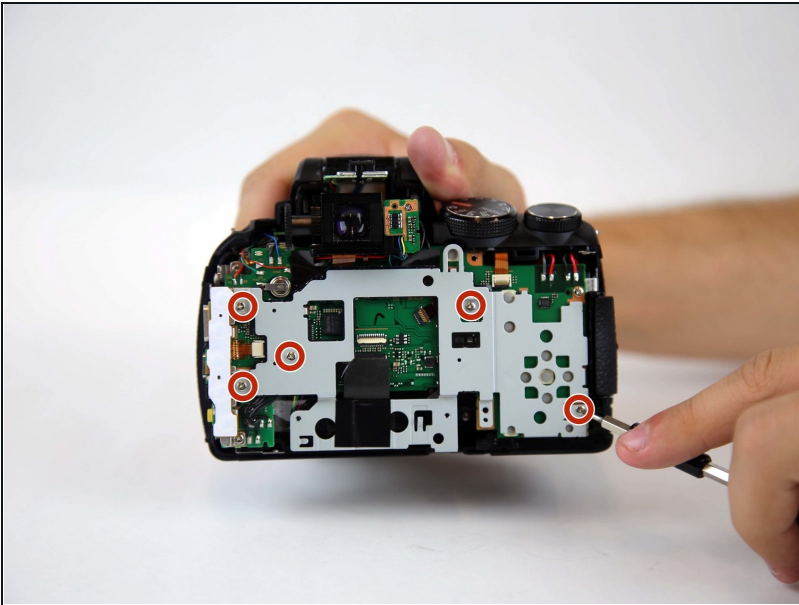
- Peel back (or off) the black tape to expose more of the inside of the camera.
- Flip the white switch of the highlighted chamber up, and that should unlock the ribbon cable from its compartment.
- ① To see if this worked, gently pull the ribbon cable out of the compartment. It should come out without force.

## Step 10



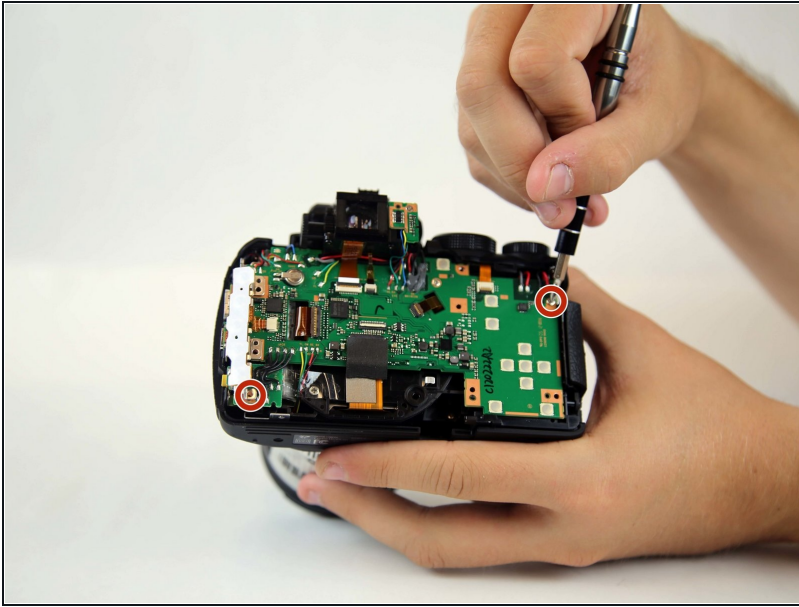
- Disconnect the ribbon cable.

## Step 11



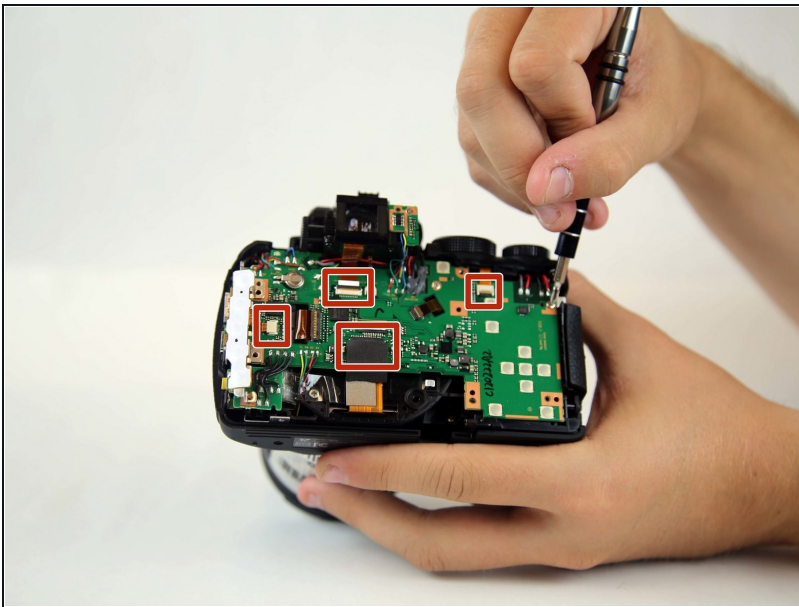
- With the Phillips #00 screwdriver, remove all five screws.
- Remove the metal casing.

## Step 12



- With the Phillips #00 screwdriver, remove all screws.

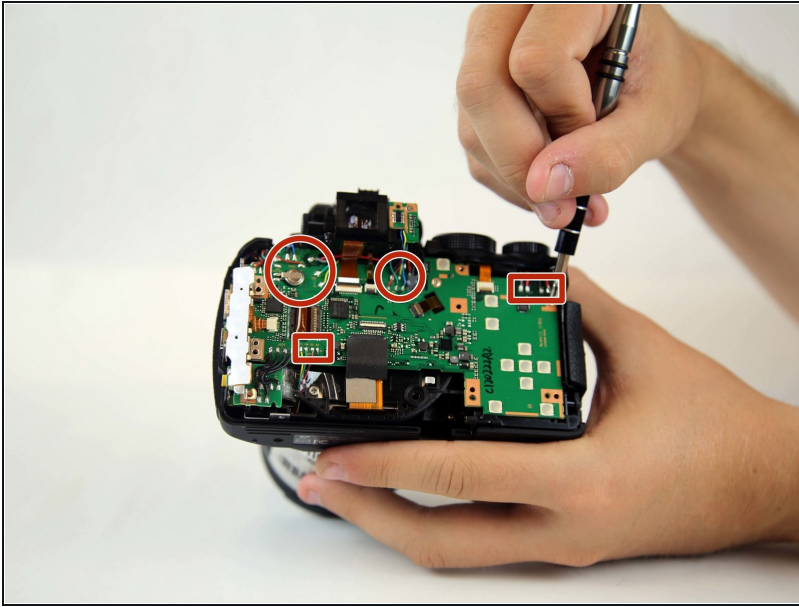
## Step 13



- Ensure the four ribbon cables are disconnected from the motherboard.
- ⓘ Be aware, one is under the black tape.

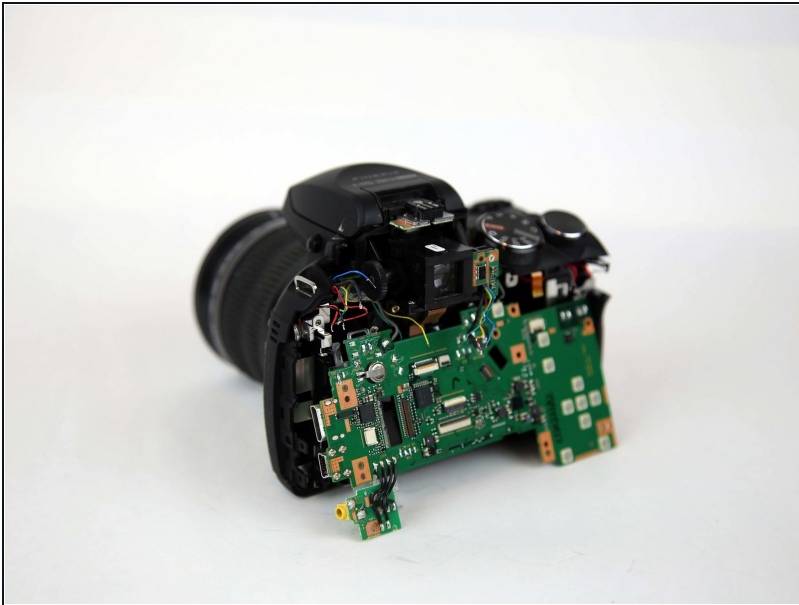


## Step 14



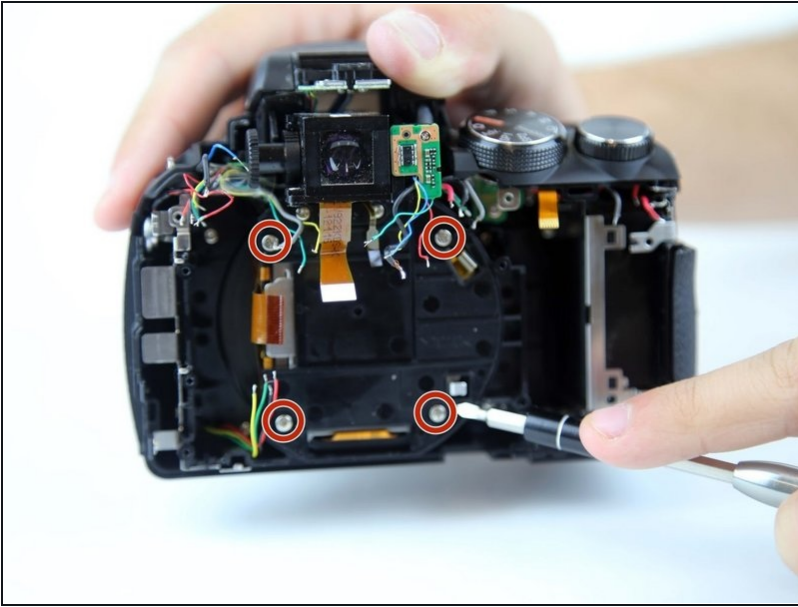
- Begin desoldering all four highlighted areas.

## Step 15



- Remove the motherboard.

## Step 16 — Lens



- Once the motherboard is taken out, with a screwdriver, unscrew all highlighted screws.
- Take the lens off once it is unscrewed.

## Step 17



- Un-attach the current lens, and replace it with the new lens.

---

To reassemble your device, follow these instructions in reverse order.