



# Nikon Coolpix S9050 Menu Wheel and OK Button Replacement

If your Nikon Coolpix S9050 menu button or OK button are not working, they may need to be replaced. This guide will show you how to remove this part.

Written By: Catrionna Bruce



---

## INTRODUCTION

If your Nikon Coolpix S9050 is not turning on, the menu wheel and OK button may need to be replaced. The requirements for this procedure are to have a Phillips #000 screwdriver and a flat surface to disassemble the parts. Make sure the camera is off and it is recommended to work in a dry area.



### TOOLS:

- [Phillips #000 Screwdriver](#) (1)
-

## Step 1 — Menu Wheel and OK Button



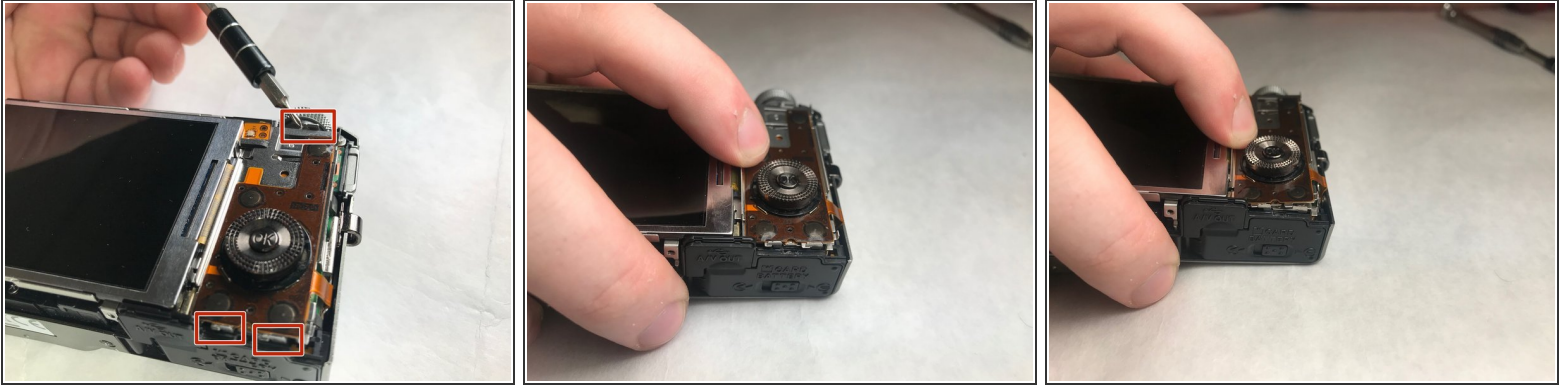
- Remove the screws. There are two on each side, and four on the bottom. The black screws are 3.2 mm Phillips #000. The silver screws are also 3.2 mm Phillips #000.

## Step 2



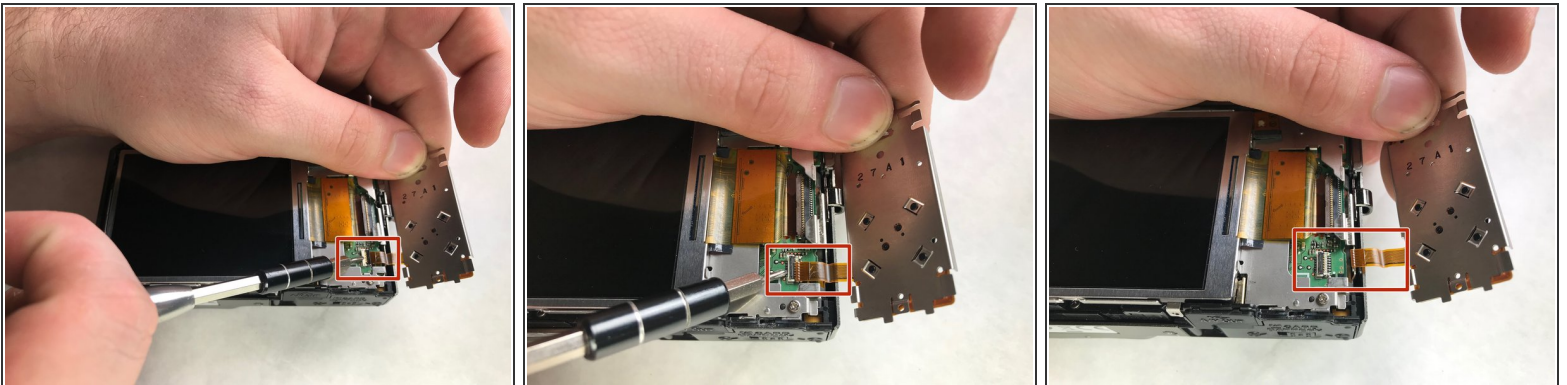
- Remove the screen housing and trim piece.

### Step 3



- Press down and pull the Menu Wheel/OK Button panel towards the screen. This will release the panel from the slots.

### Step 4



- Lift up on the black plastic tab(zero insertion force connector-ZIF) and gently pull the panel out to detach the ribbon cable from the camera body.

To reassemble your device, follow these instructions in reverse order.