



Philips DVP5992-F7 Tray Replacement

This guide will teach you how to replace the tray on your Philips DVP5992-F7.

Written By: Dyllon Phuong



INTRODUCTION

DVD trays can easily become unresponsive or broken. This guide will teach you how to replace a broken or unresponsive tray for the Philips DVP5992-F7.



TOOLS:

- [Phillips #1 Screwdriver](#) (1)
-

Step 1 — Tray



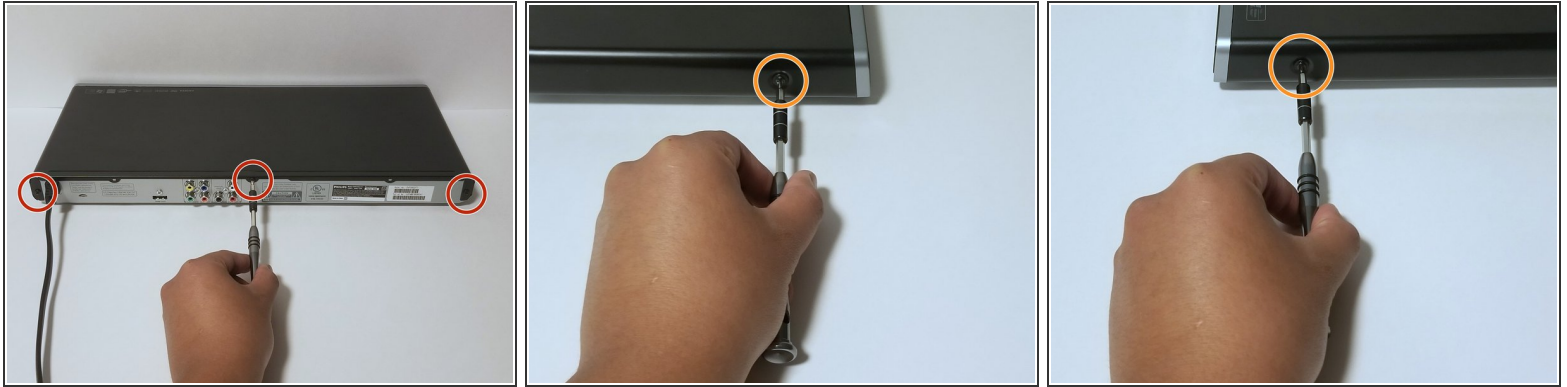
- Plug in the DVD player.
- Press the eject button to open the tray.
- Push up on the tray faceplate to remove it.

Step 2



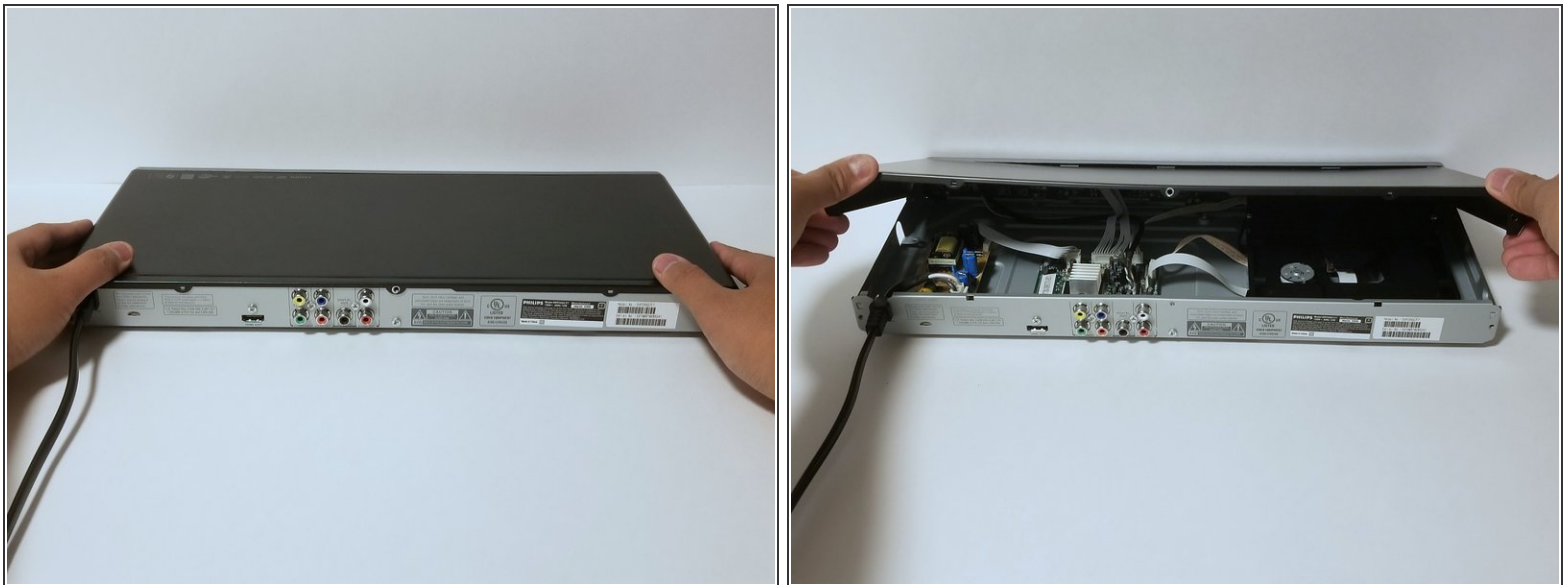
- Press the eject button to re-insert the tray.
- Unplug the DVD player after the tray is closed.

Step 3



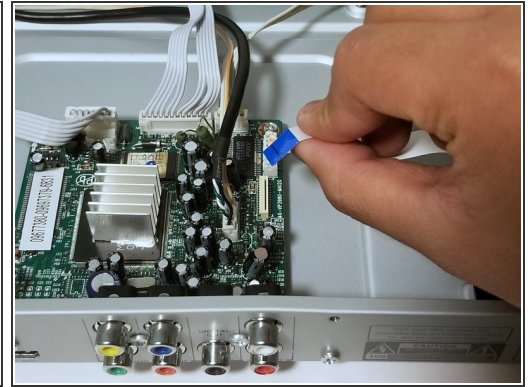
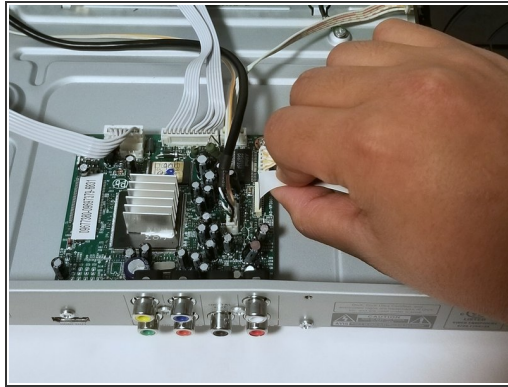
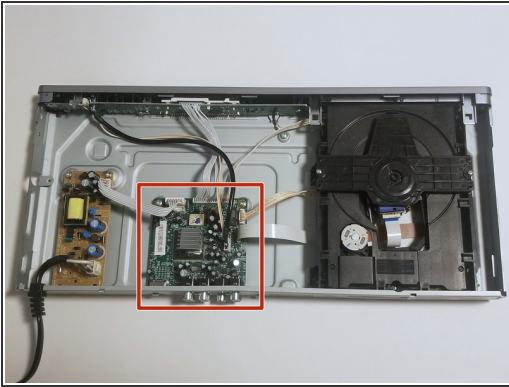
- Remove the three 6.4 mm Phillips #1 screws on the back of the device with a Phillips head screwdriver.
- Remove the 6.4 mm Phillips #1 screws on each side of the device.

Step 4



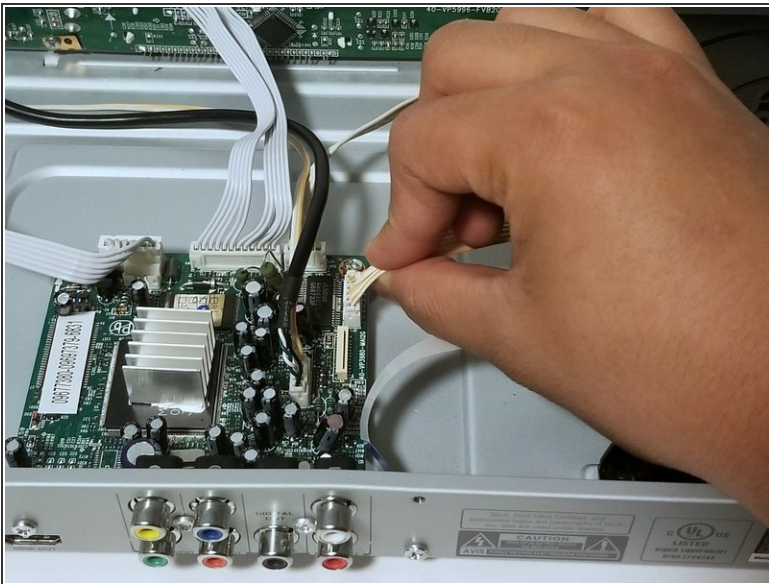
- Remove the top plate of the DVD by firmly grasping the player on both sides.
- Shift the top plate towards the backside of the player.
- Lift the back half of the top plate up to remove it from the player.

Step 5



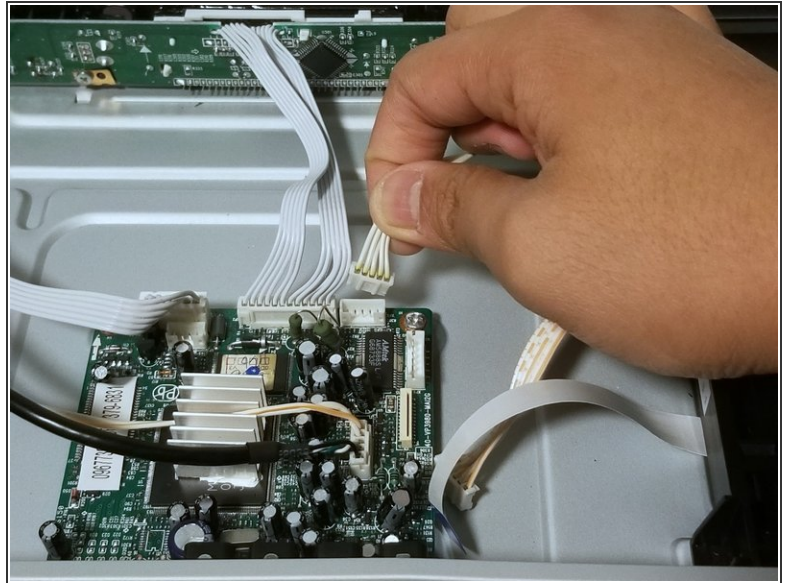
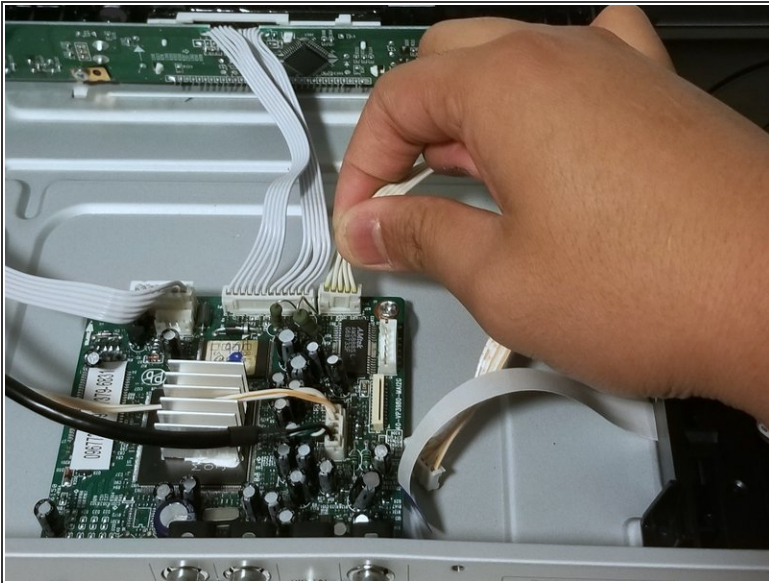
- Locate the motherboard within the DVD player.
- Firmly grasp the ribbon wire and unplug it from the motherboard.

Step 6



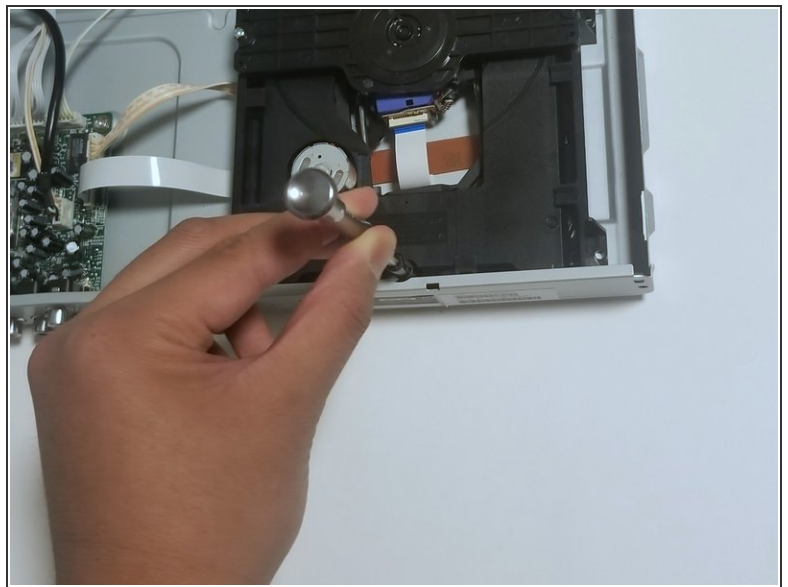
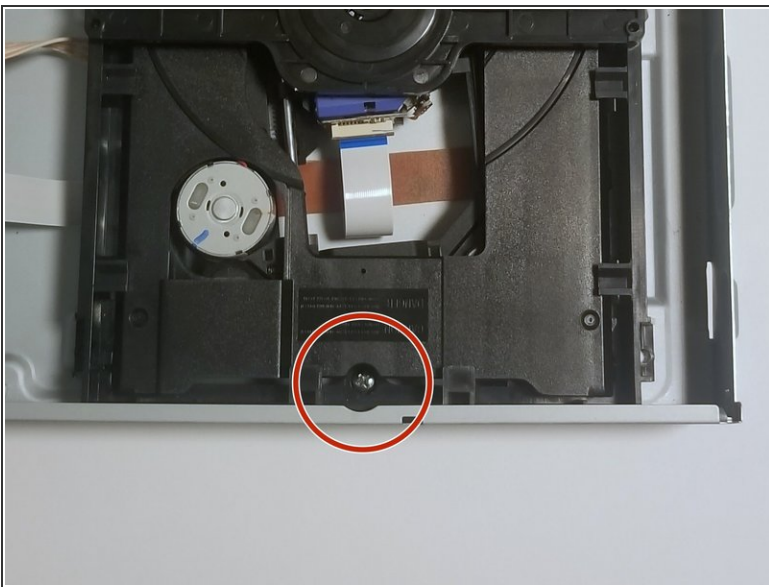
- Firmly grasp the bundled cable connector that attaches the tray to the motherboard.
- Gently pull upwards to remove the bundled cable connector from the motherboard.

Step 7



- Firmly grasp the second bundled cable connector that attaches the tray to the motherboard.
- Gently pull upwards to remove the second bundled cable connector from the motherboard.

Step 8



- Remove the 9.0 mm #1 Phillips head screw that holds the tray to the DVD player.

Step 9



- Lift the tray out of the DVD player from the back.

To reassemble your device, follow these instructions in reverse order.