



Fujifilm FinePix S4200 Motherboard Replacement

This guide provides step by step instructions for replacing the motherboard.

Written By: Marisol Montes-Castro





TOOLS:

- [Soldering Iron](#) (1)
 - [Phillips #000 Screwdriver](#) (1)
-

Step 1 — Motherboard




- Turn off the camera by pushing the switch as shown.

Step 2



- Remove all the 4mm screws from the left, right, and bottom of the camera.

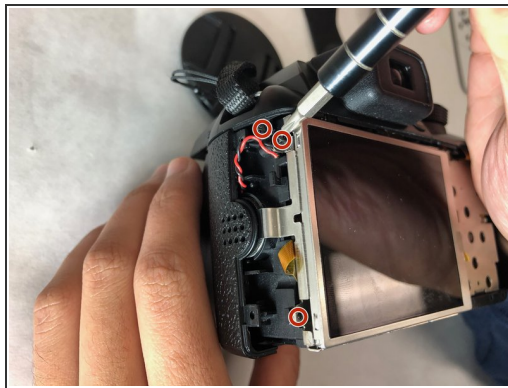
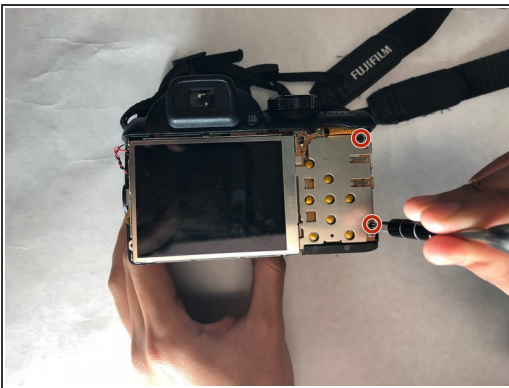
 A Phillips #000 screwdriver should be used to remove all nine screws.

Step 3



- Remove casing part pictured by gently pulling up until casing is fully detached.

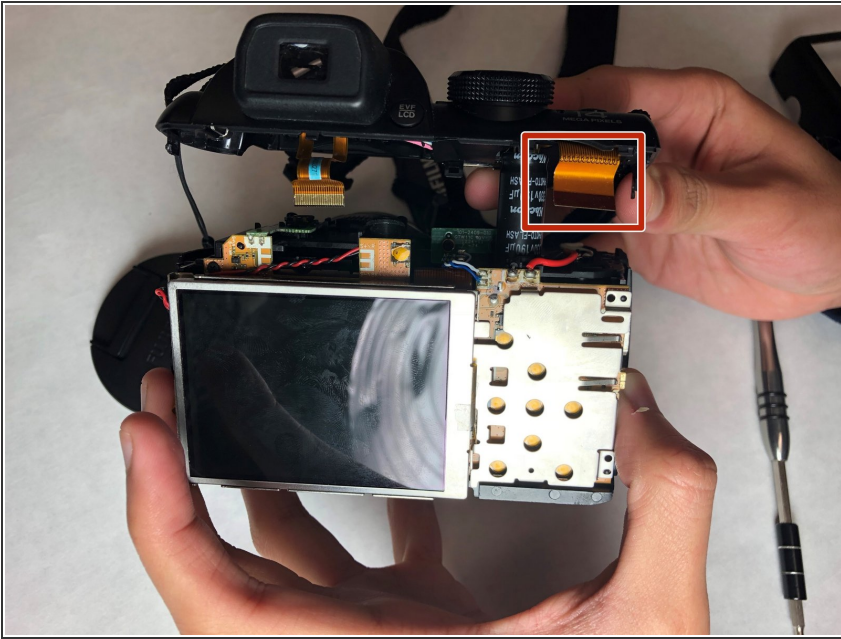
Step 4



- Remove the 4 mm screws on the metal plate. Then remove the 4 mm screws on left side of the camera, and remove the two 4mm screws on right side.

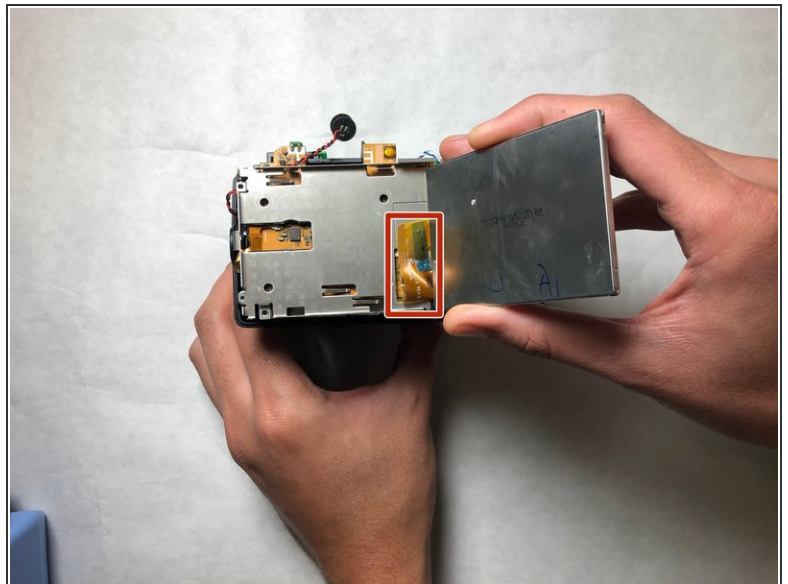
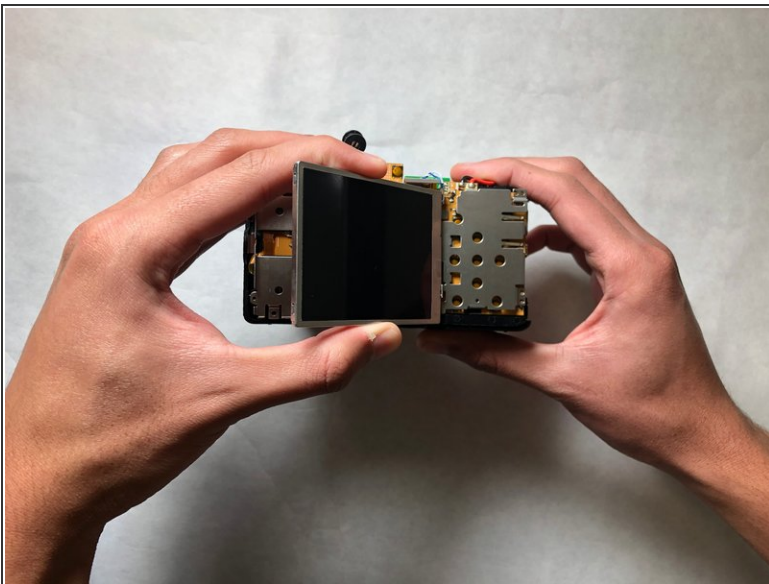
 Use the Phillips #000 screwdriver to avoid stripping the screws.

Step 5



- Remove the top casing by pulling upwards.
- To remove orange tab gently pull on the tab until it is detached from the clamping device on the motherboard.

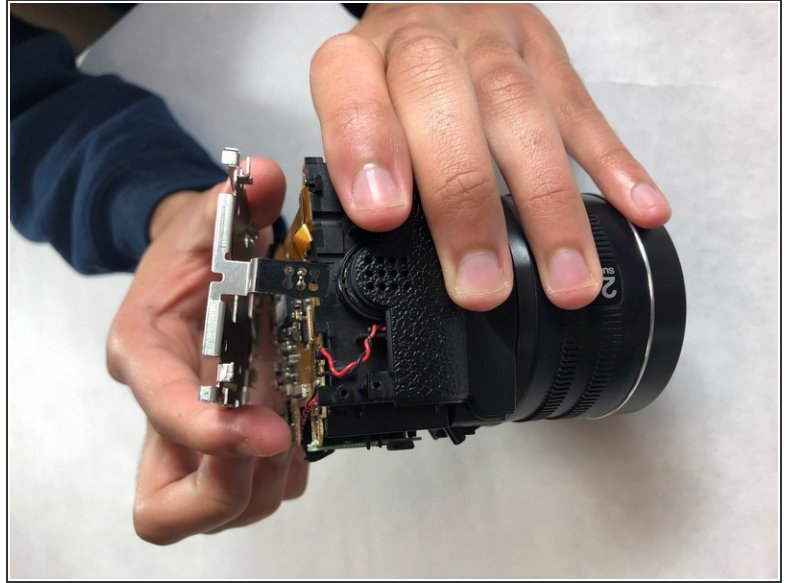
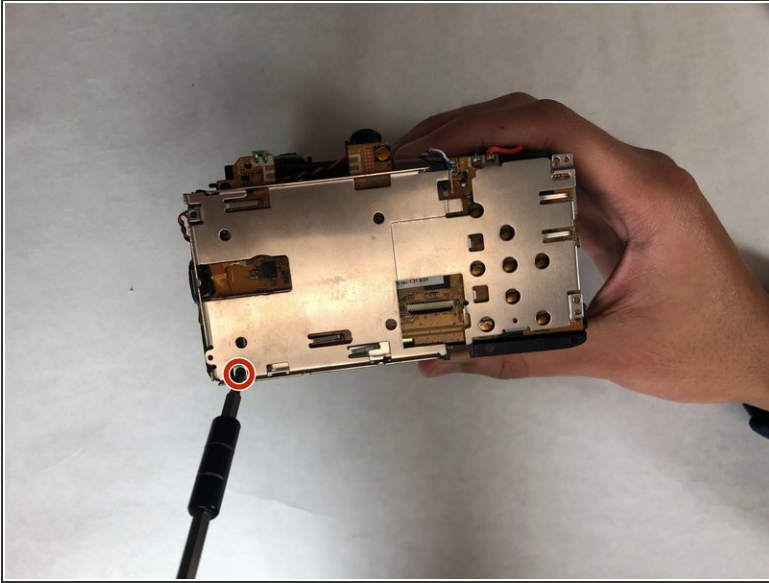
Step 6



- Carefully remove LCD screen.
- Gently pull on orange tab until it is free.

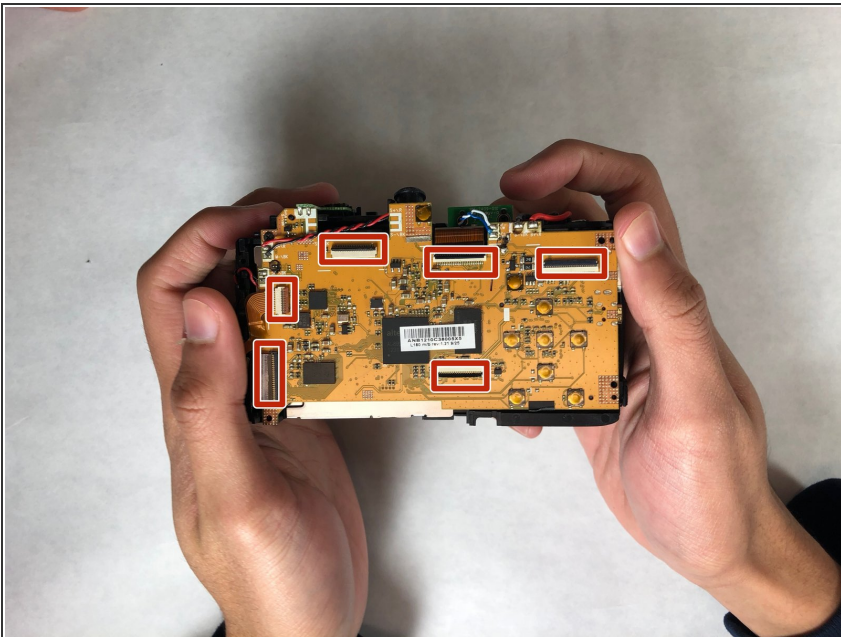
⚠ This orange strip is susceptible to tearing.

Step 7



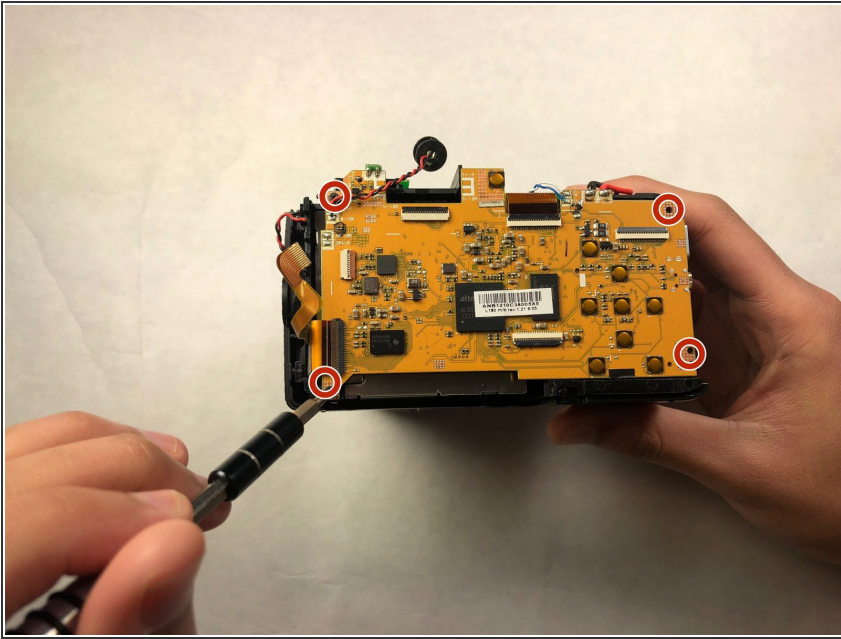
- Remove remaining 4mm screw.
- Detach metal plate by lifting plate upwards.

Step 8



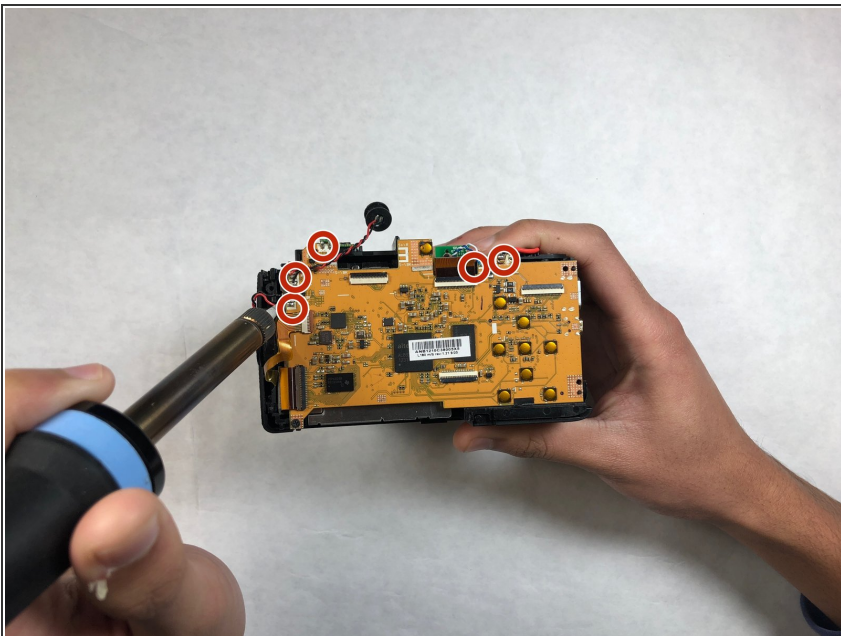
- Remove remaining orange tabs on motherboard. Gently pull on each orange tab until it is free. Make sure all tabs are free (check markers on image).

Step 9



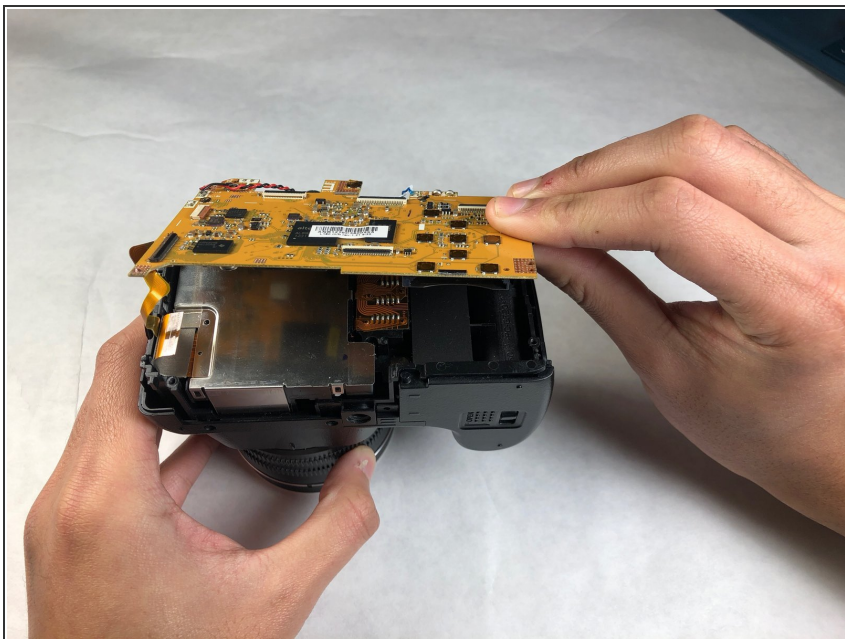
- Remove the 4mm screws in the corners of the motherboard.

Step 10



- Use a soldering iron to melt the solder and disconnect the five connections shown.
- ⚠ After removing the soldered connections, they must be given ample time to cool before moving to the next step.

Step 11



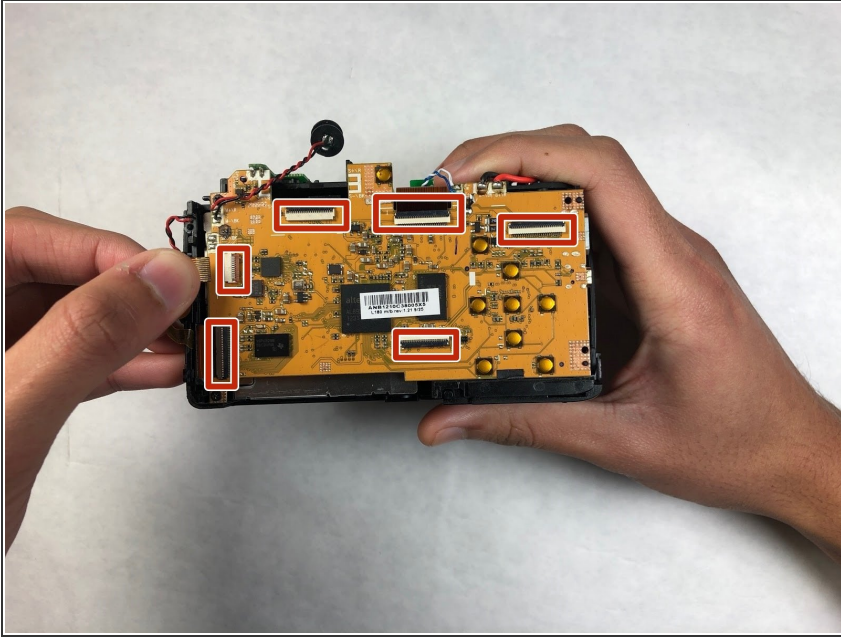
- Remove the motherboard. It should be free of all connections at this point and can be lifted with ease.

Step 12



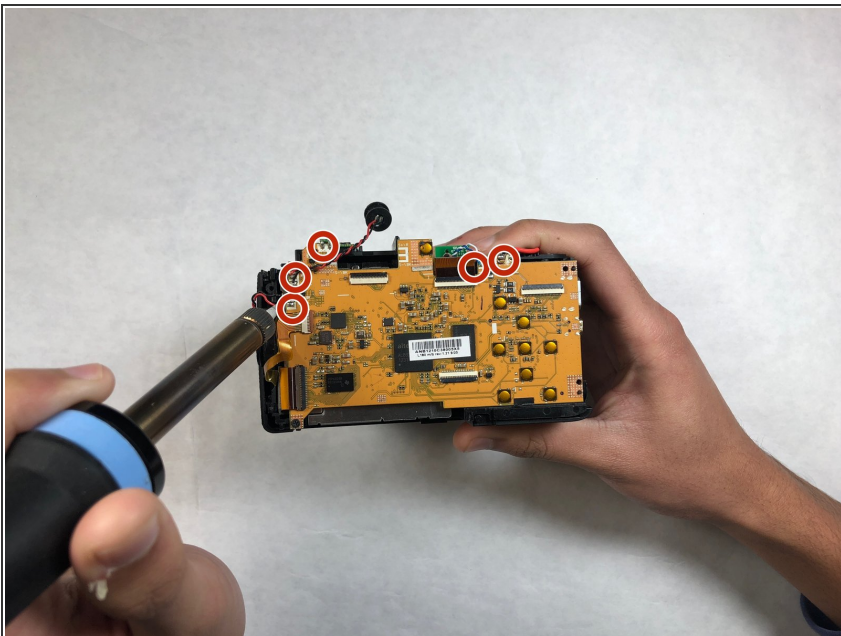
- Replace the old motherboard with a new motherboard.

Step 13



- Reconnect the orange strips to their designated connections.
- ⚠ Be gentle when reconnecting the orange strips as they are susceptible to tearing.

Step 14



- Resolder all the connections and wire onto the new motherboard
- ⚠ After soldering the connections, they must be given ample time to cool before moving to the next step.
- After given enough time and all the connections on new motherboard are secured, reassemble the camera.

To reassemble your device, follow these instructions in reverse order.