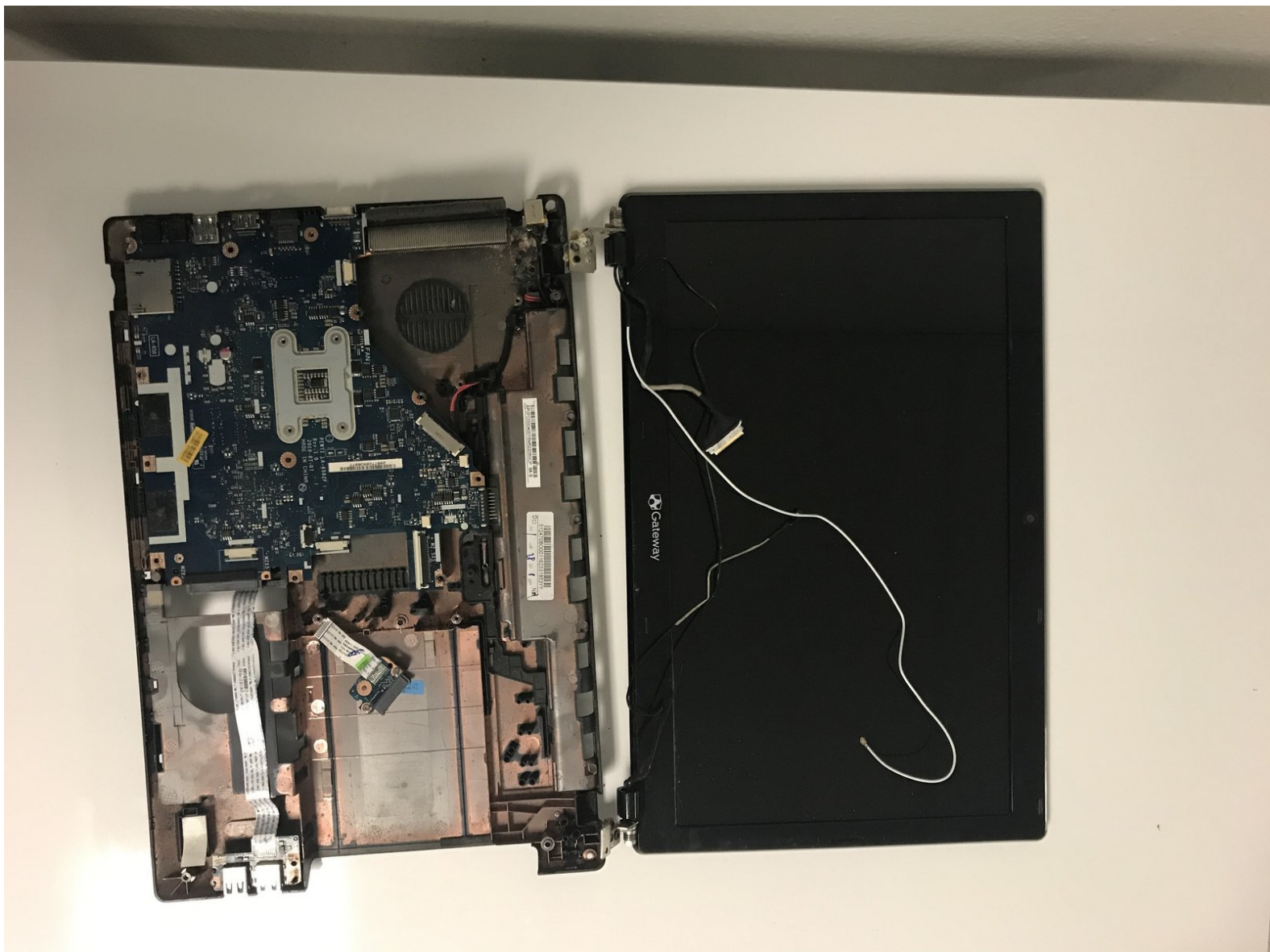




# Gateway NV55C49u Display Replacement

This guide will show how to replace the display in order to fix a distorted or cracked screen.

Written By: Matthew



# INTRODUCTION

If your laptop screen is not functioning properly, use this guide to replace the display. This is a difficult repair that requires the laptop to be nearly completely disassembled. This level of disassembly requires handling multiple fragile components, so caution should be used.



## TOOLS:

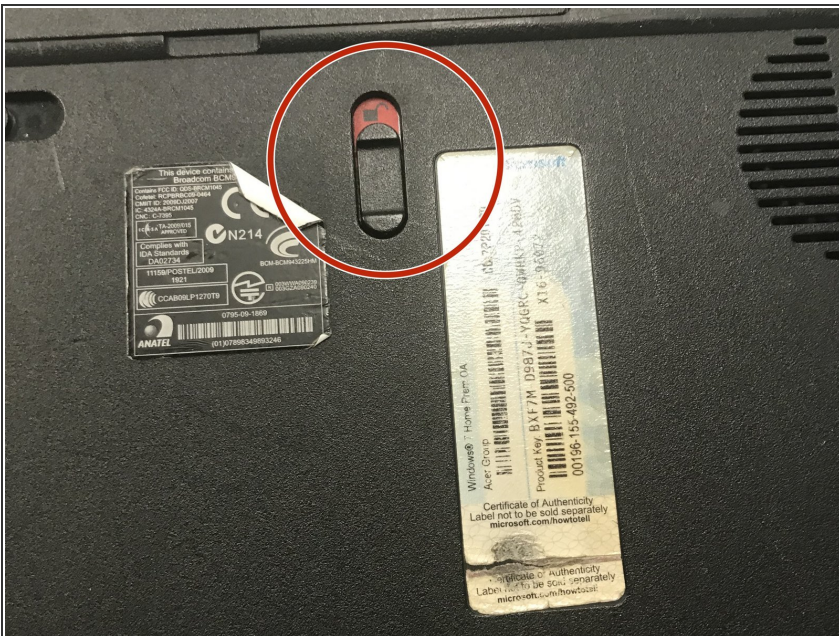
- [iFixit Opening Tools](#) (1)
  - [Phillips #00 Screwdriver](#) (1)
  - [Phillips #0 Screwdriver](#) (1)
  - [Metal Spudger](#) (1)
-

## Step 1 — Display



- Flip the laptop bottom side up.

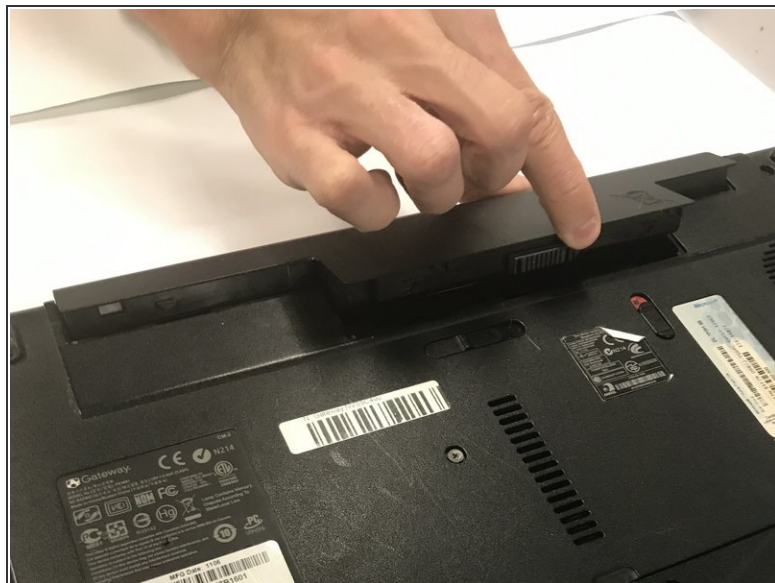
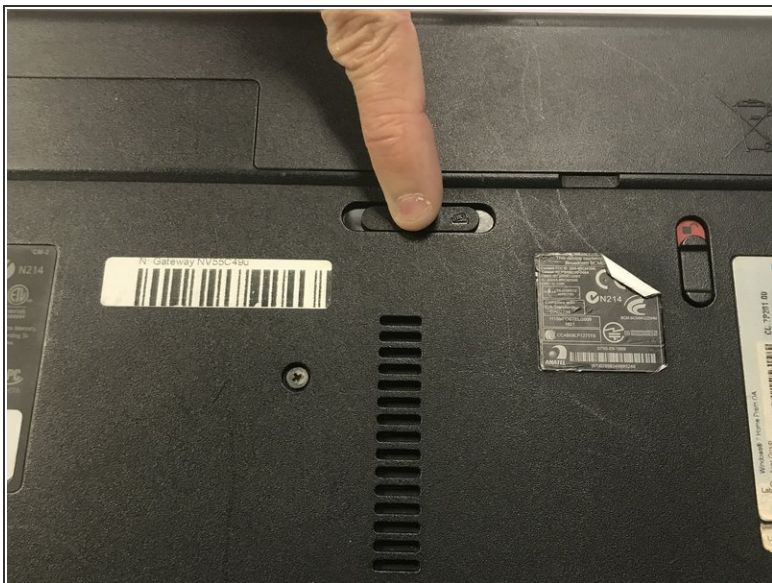
## Step 2



- Slide the battery lock to show the red background.



### Step 3



- Push the battery slider to the other side. This will automatically eject the battery.
- You can now remove the battery

### Step 4



- Remove the two 6.0mm Phillips #00 screws from the back cover.

## Step 5



- Remove the back cover by placing a plastic opening tool in the indentation and prying upwards.

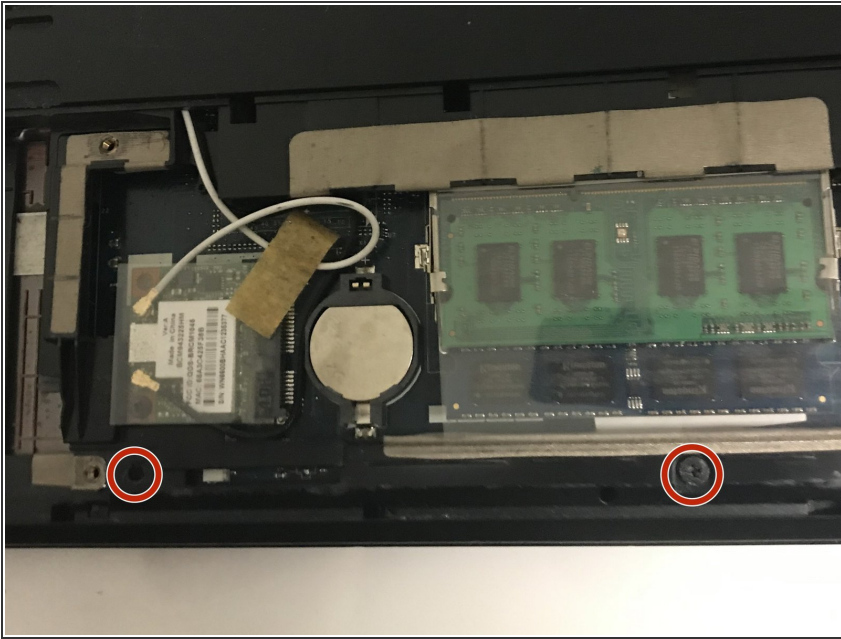
## Step 6



- Remove the four 3.0mm Phillips #0 screws from the battery compartment.



## Step 7



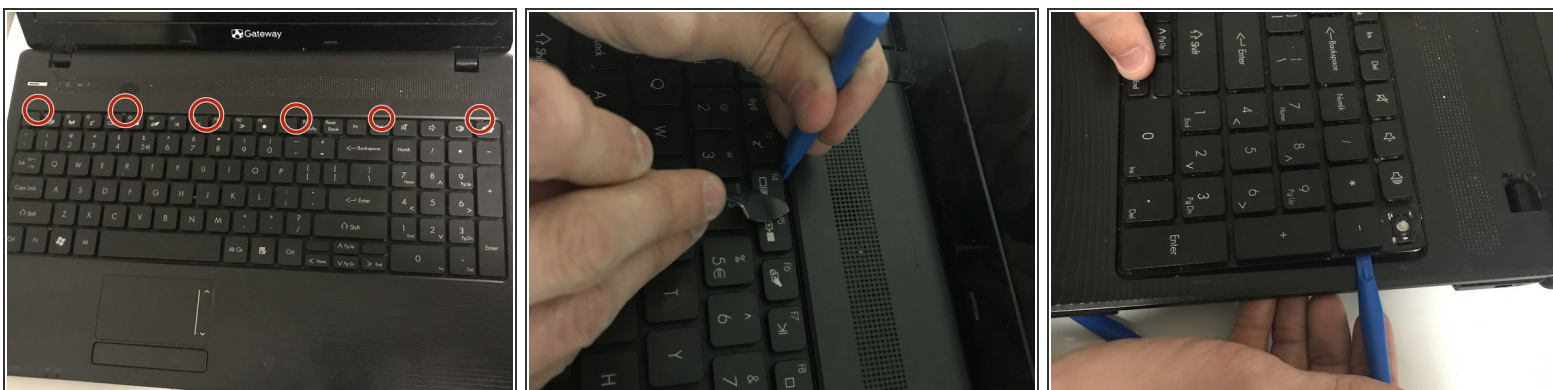
- Remove the two 6.0mm #00 Phillips screws from the area under the back cover.

## Step 8



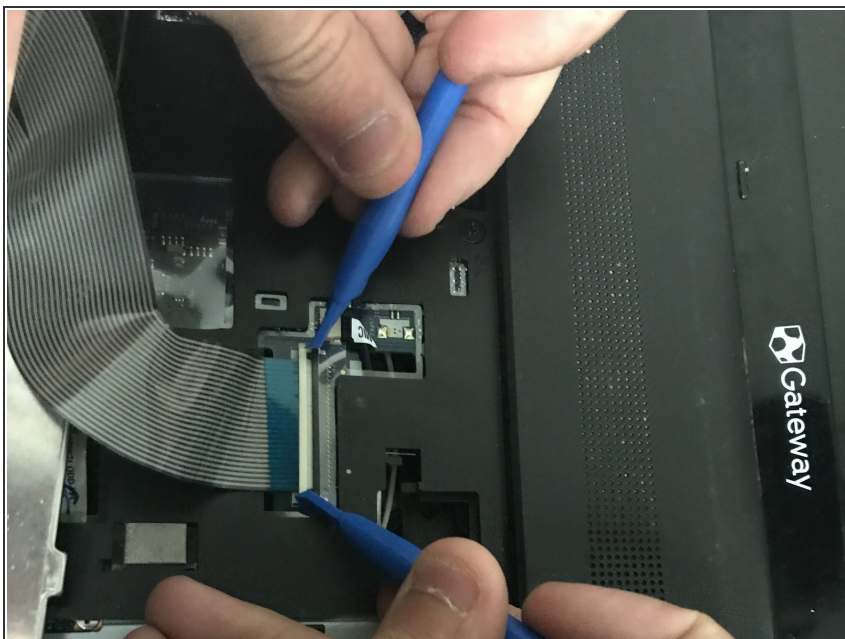
- Remove the nine 6.0mm #00 Phillips screws from the back of the laptop.

## Step 9



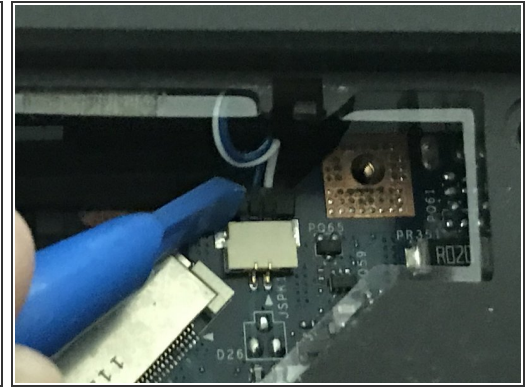
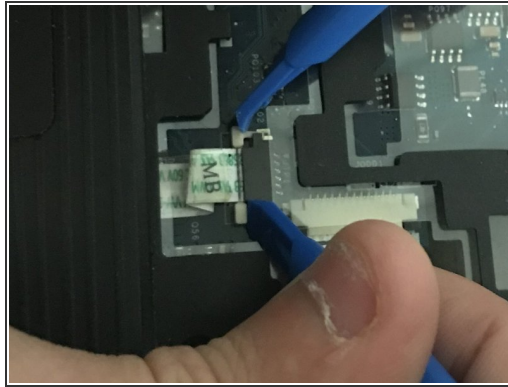
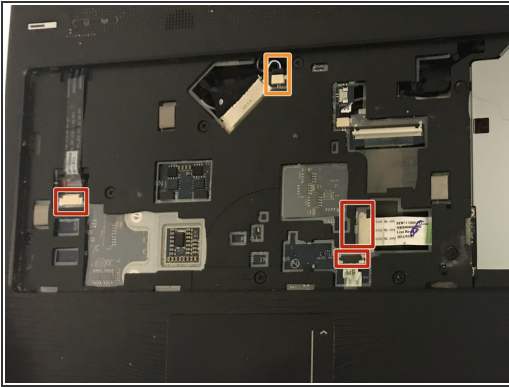
- There are 6 small clips that holding the top row of the keyboard in place.
- To remove the keyboard, push each of these clips in with a metal spudger while simultaneously using a plastic opening tool to pry the keyboard up.
- Once the top row is loose you can use the plastic opening tool to gently pry the rest of the keyboard off the laptop.

## Step 10



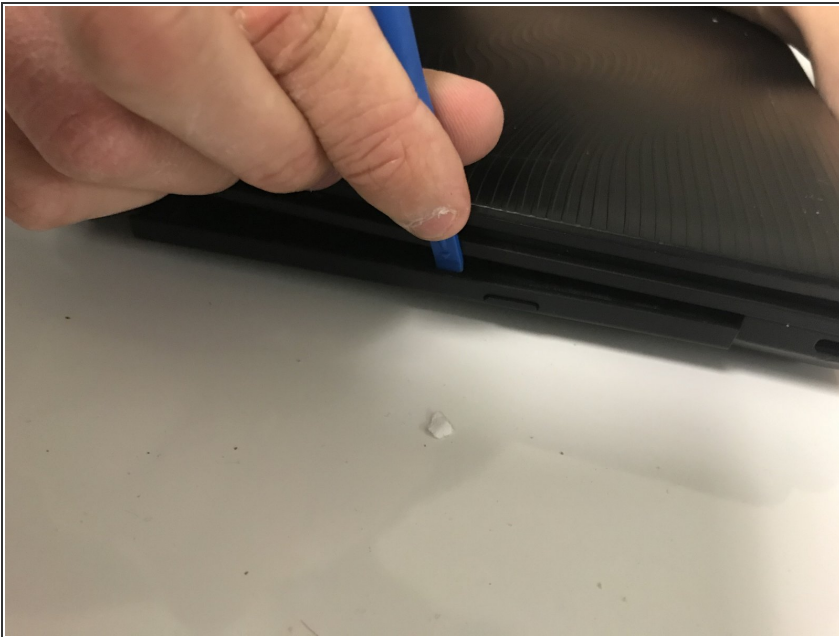
- Once the keyboard is loose, slowly lift the keyboard away from the laptop.
  - There will be a single ribbon cable connecting the keyboard to the laptop body. Use two plastic opening tools to loosen the fastener,
  - After the fastener is loose, gently disconnect the cable.
- ⚠ Ribbon cables should come out easily once the fasteners are loose. Do not apply too much pressure.

## Step 11



- Remove the 3 ribbon cables using a plastic pry tool to gently push the fasteners loose and gently pulling the cables out.
- ⚠ Ribbon cables should come out easily once the fasteners are loose. Do not apply too much force.
- Use a plastic pry tool to disconnect the single pinned connector.

## Step 12



- Use a plastic opening tool to remove the disk drive cover on the right side of the laptop.

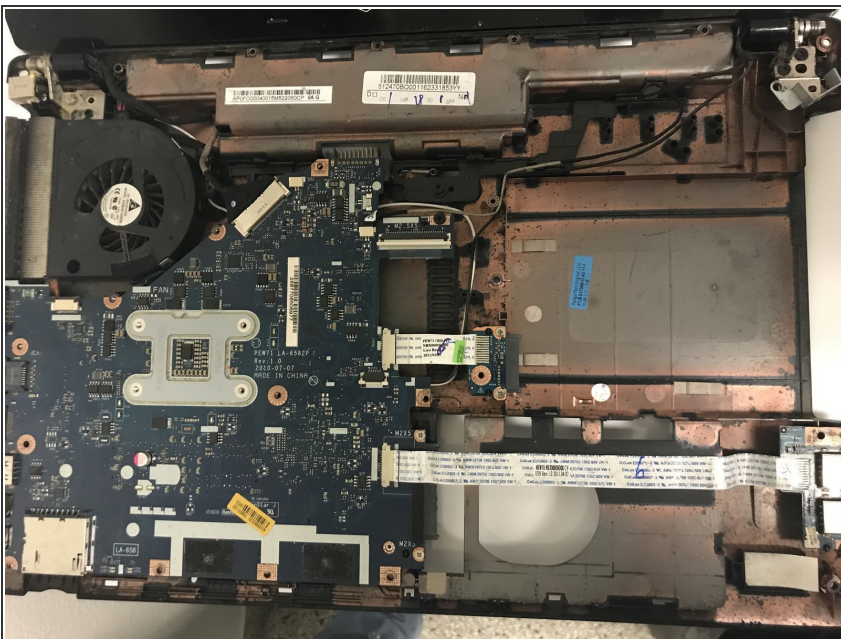


## Step 13



- Use the metal spudger to pry upwards on the disk drive until you can grab and remove it.

## Step 14



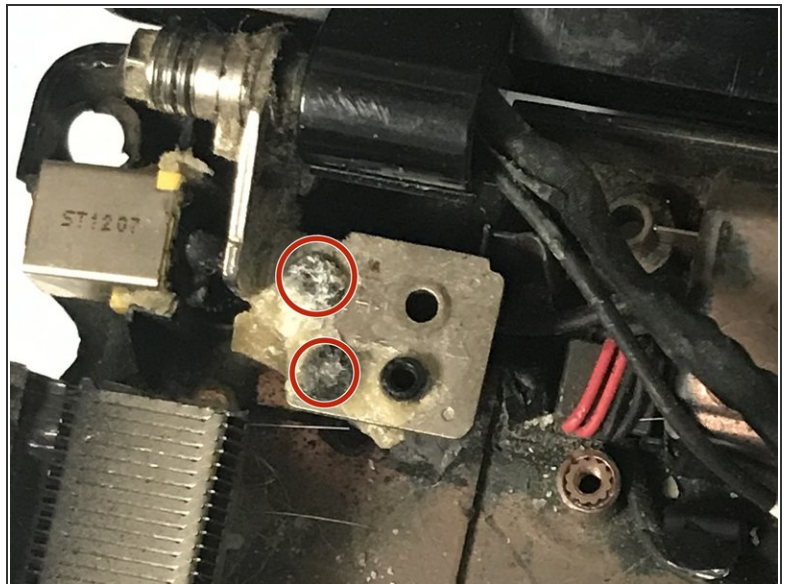
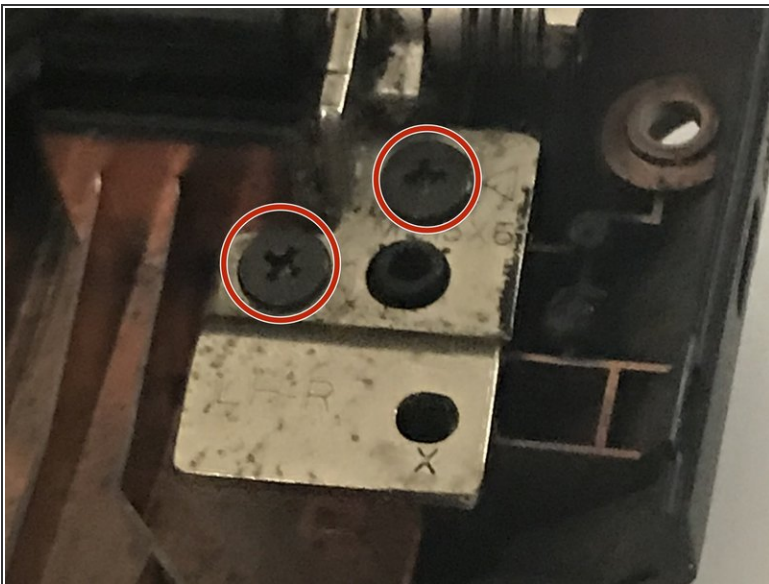
- Now simply lift the face-plate off the laptop body.
- ⚠ This step exposes the motherboard, which is a sensitive part of the laptop. Make sure not to touch anything with your bare hands as a static shock could ruin the board.

## Step 15



- Remove the ribbon wire that connects the display to the motherboard using two plastic opening tools.

## Step 16



- Remove the two 4.0mm #00 Phillips screws from both the top right and top left of the exposed laptop body.
- The display is now fully disconnected.

To reassemble your device, follow these instructions in reverse order.