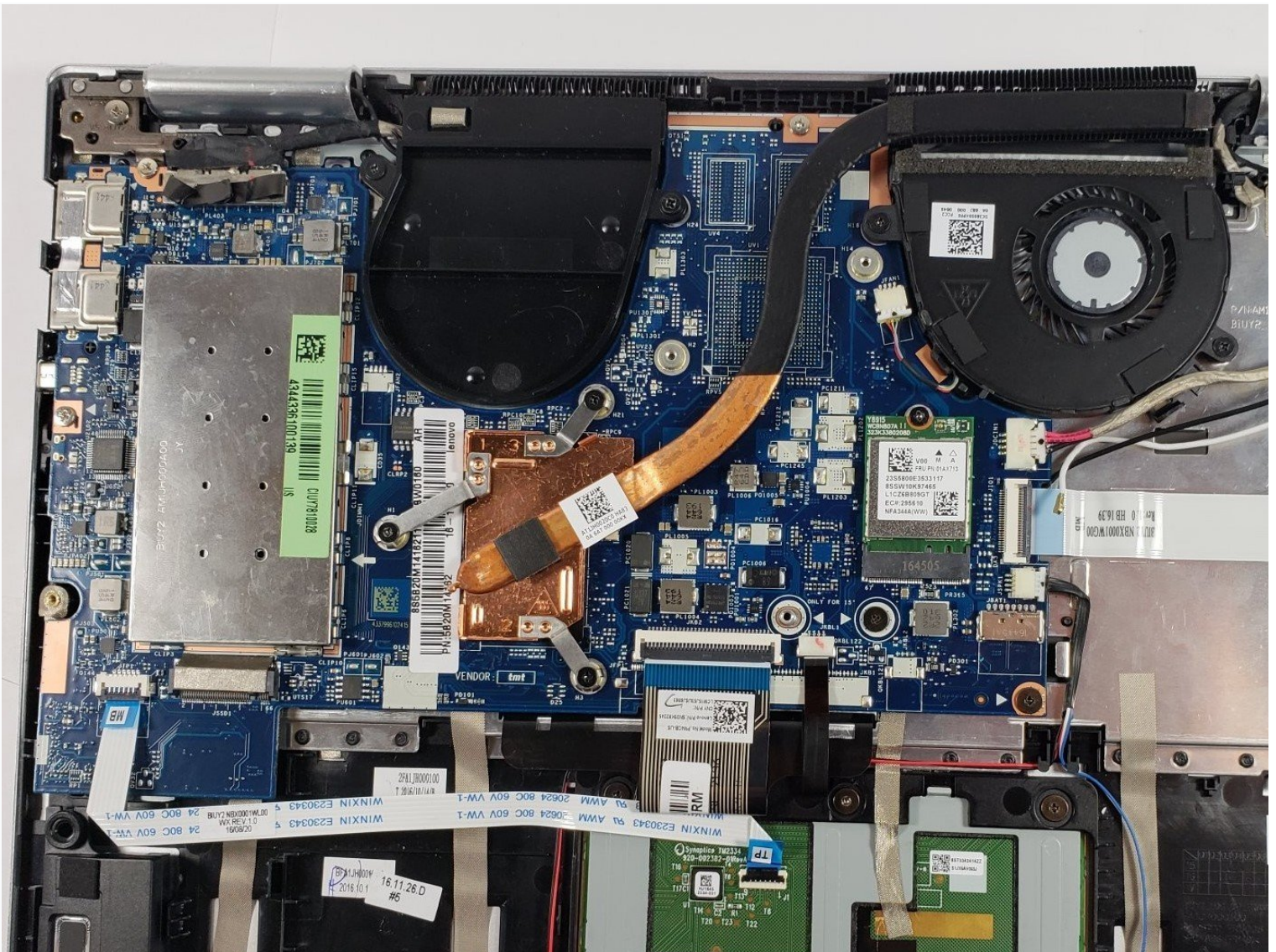




Lenovo Yoga 710-14IKB Motherboard Replacement

This simple guide will show you how to unscrew...

Written By: Evan Cruzen



INTRODUCTION

This simple guide will show you how to unscrew and remove all cables from the motherboard of a Lenovo Yoga 710-14KB besides the display cable, which will need to be unsoldered.

TOOLS:

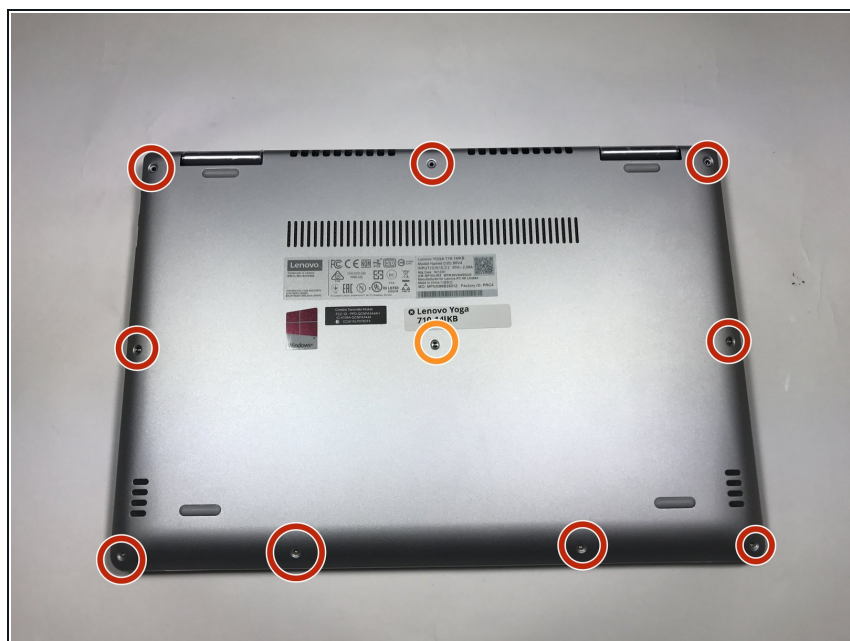
T4 Torx Screwdriver (1)


iFixit Opening Tool (1)


Phillips #00 Screwdriver (1)

Soldering Iron 60w Hakko 503F (1)

Step 1 — Back Cover



 Ensure your device is completely OFF before starting this guide.

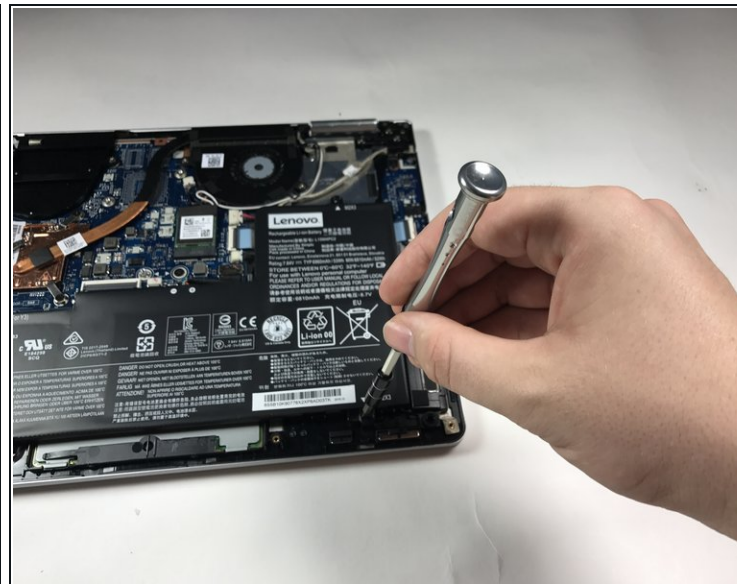
- Use a Torx T4 screwdriver to unscrew the nine 5 mm screws holding the cover in place.
- Use a Torx T4 screwdriver to unscrew the 8 mm screw in the center.
-  When, reassembling, make sure not to tighten the screws too much or you may risk cracking the plastic cover.

Step 2



- Use the plastic opening tool to pry the cover up and away from the laptop, starting at one end and working your way around the cover.
- ⓘ The cover is large and flat and made of thin plastic. It cracks easily, so make sure not to pry too hard.

Step 3 — Battery



- Use a Phillips #00 screwdriver to remove the four 3 mm screws holding the battery in place.
- ⓘ Be careful not to cross-thread the screws. Also, don't let the screws fall down into the laptop case.

Step 4



- Use your fingers or an opening tool to slide the battery connector out of its motherboard socket.

Step 5



- Remove the battery.

Step 6 — SSD



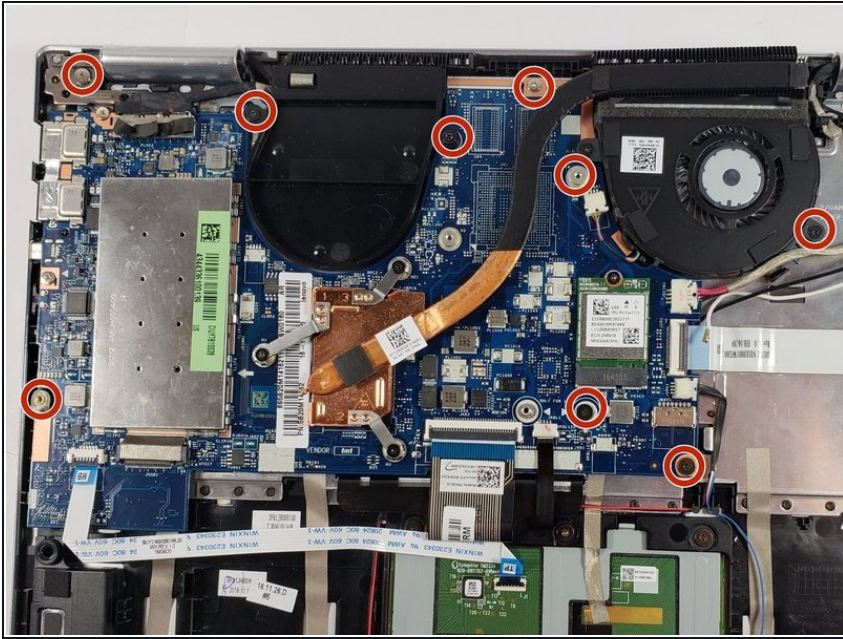
- Use a Phillips #00 screwdriver to remove the 3mm screw on the SSD.

Step 7



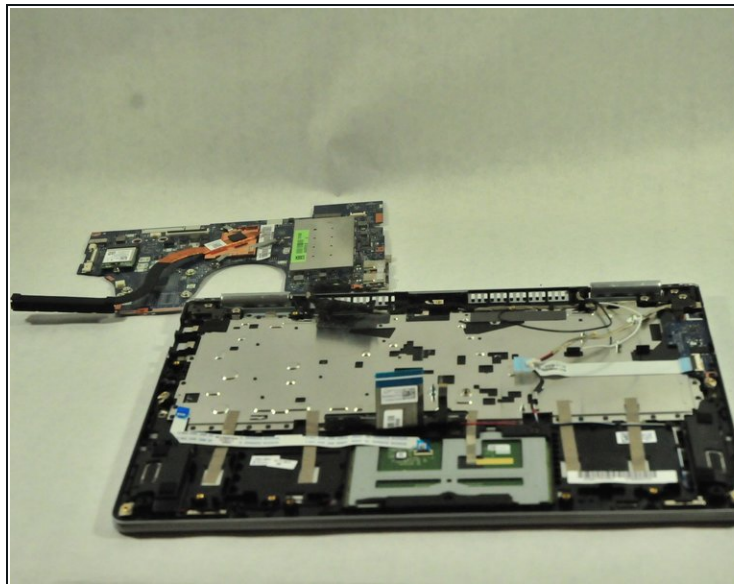
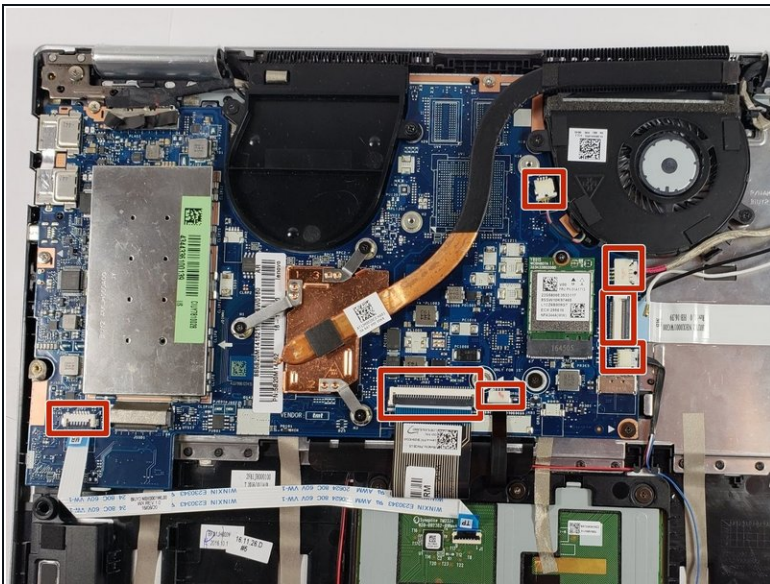
- Use your fingers to lift up the SSD and pull away from the socket removing it from the laptop.

Step 8 — Motherboard



- Use a PH00 screwdriver to remove the nine 3mm screws.

Step 9



- Disconnect the indicated cables from the motherboard.

⚠ Be careful when removing cables. Do not pull or yank cables from their slots.

- Remove the motherboard.

ⓘ If you want to fully remove the motherboard, you must desolder the display cable.

To reassemble your device, follow these instructions in reverse order.