



Sony Cyber-shot DSC-HX80 Lens Replacement

How to replace a Sony Cyber-shot DSC-HX80 lens.

Written By: Gordon Jones



INTRODUCTION

If your frontal lens is broken or malfunctioning follow this guide to replace lens. The tools required for this guide are a PH000 screwdriver, plastic opening tool, metal spudgers and a magnetic mat or plastic bag.



TOOLS:

- [iFixit Opening Tools](#) (1)
 - [Phillips #000 Screwdriver](#) (1)
 - [Metal Spudger](#) (1)
-

Step 1 — Lens



- Before disassembling any part of the camera, turn off the power by pressing down on the ON/OFF button. The ON/OFF button is located on top of the camera.

Step 2



- Open the compartment located at the bottom of the camera. Slide the LOCK/OPEN switch to the OPEN side. Locate the small blue tab on the side. Pull it in direction away from battery. Remove the battery and set it aside.

Step 3



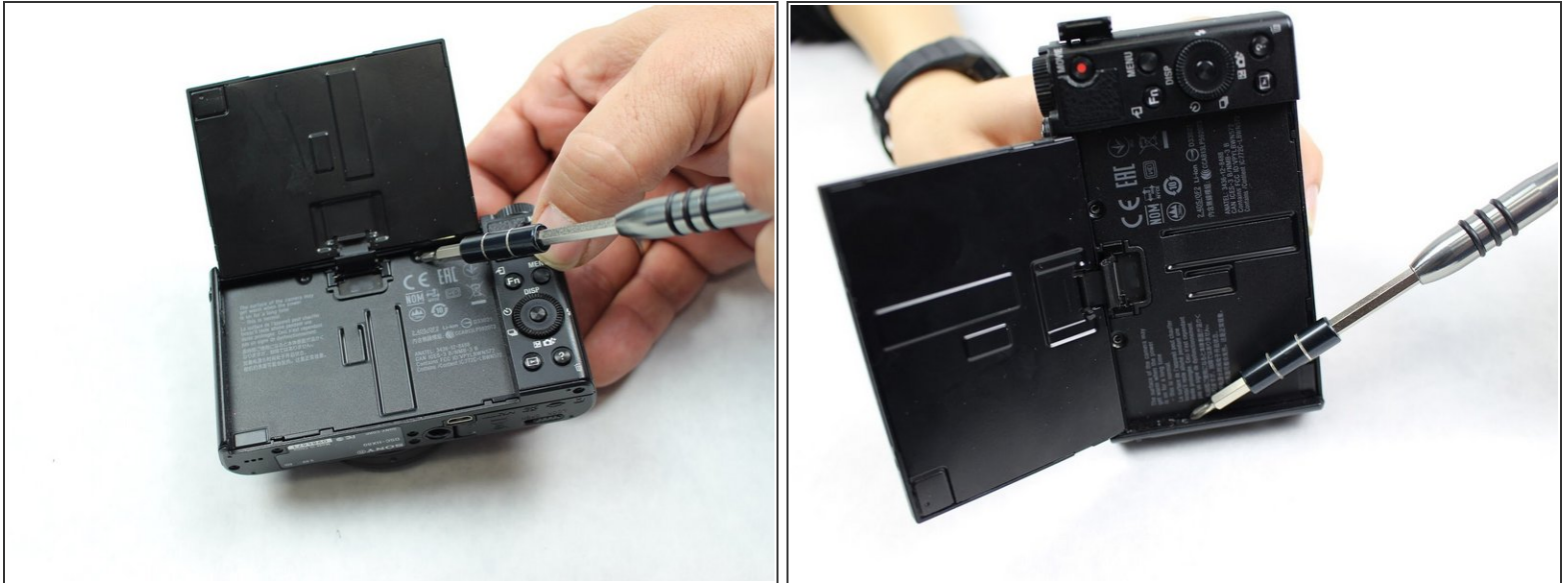
- Place the camera upside down and remove the screws located at the bottom of the camera using the PH000 head screwdriver.
- At the end of this step, there will be a total of five 0.4mm Phillips screws. Place screws on a magnetic mat or plastic bag.
- Leave the two screws holding the LCD screen in place.

Step 4



- Keep working alongside each side of the camera until all screws are addressed.
- In addition to the five screws from the bottom, a total of three more 0.4 mm black Phillips screws are located as indicated in the photo. Place them on the magnetic mat or plastic bag.

Step 5



- Flip the LCD screen upwards. Use the PH000 Phillips head screwdriver to remove screws located under the LCD screen.
- For this step there will be an additional three 0.3 mm black Phillips screws. Place them on magnetic mat or plastic bag.

Step 6



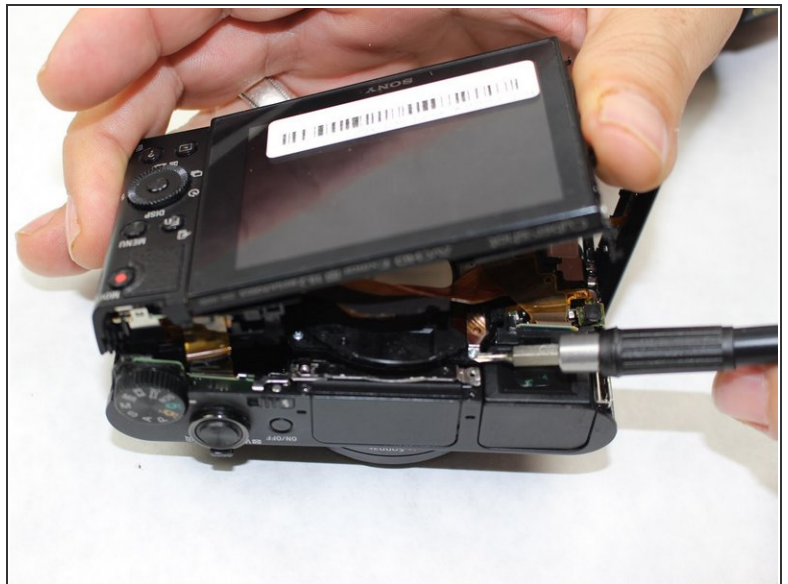
- **Use the plastic opening tools included in the iFixit tool kit first.** If the shell/parts do not detach from each other, use metal spudgers as a last resort to loosen/separate the plastic shell of the camera. Keep in mind that there may be more screws holding parts together. Work delicately and separate sides evenly.

Step 7



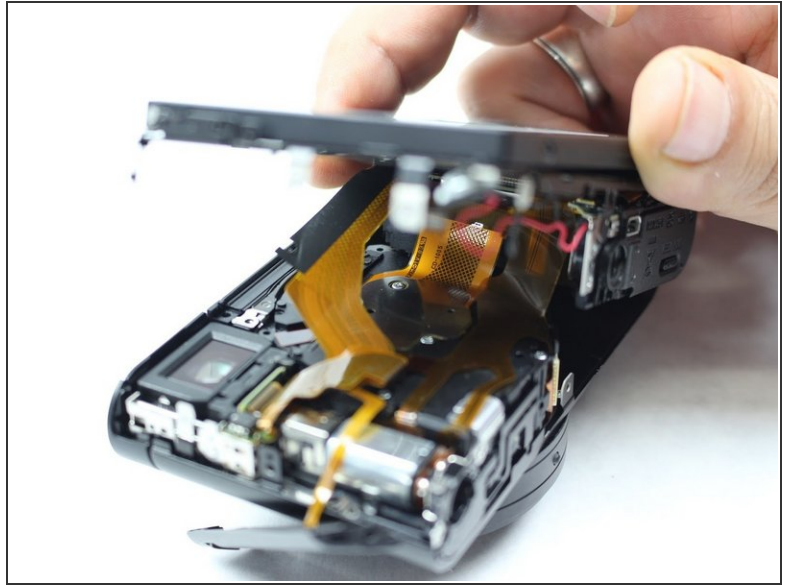
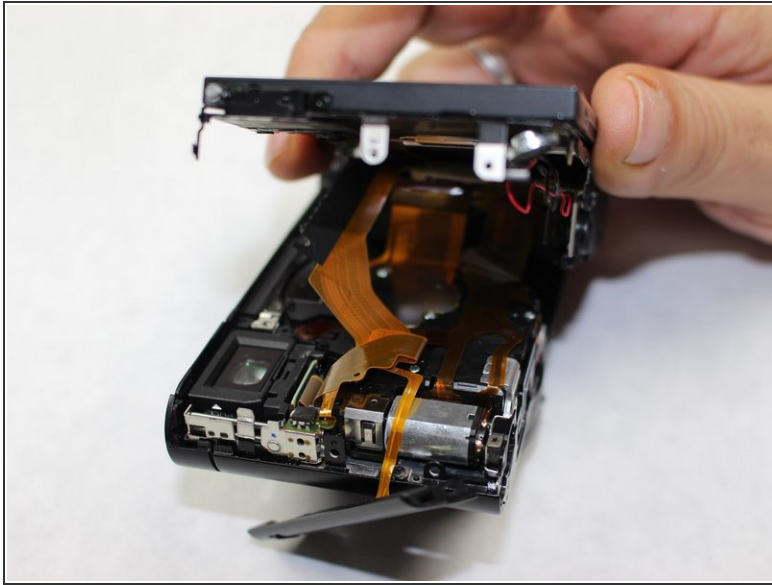
- After loosening the plastic edges of the camera, gently pull the LCD screen upwards.

Step 8



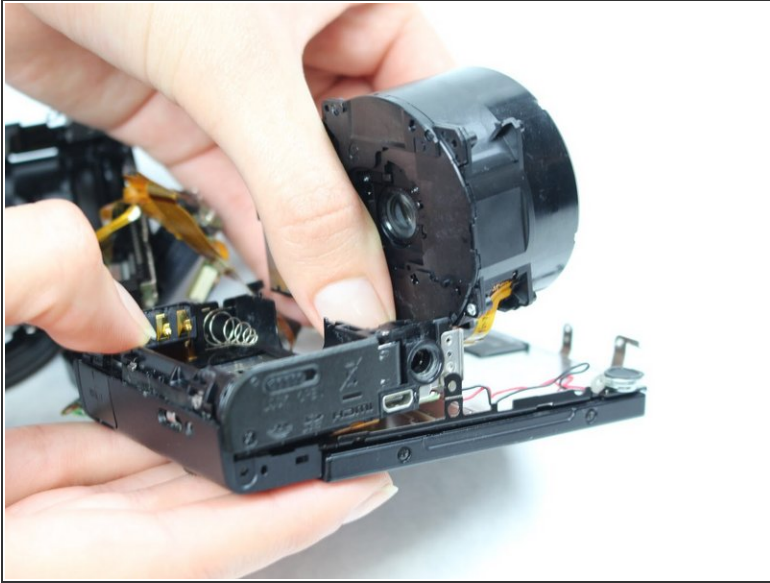
- Locate the two 0.3 mm silver screws that hold the face of the screen in place. Use the PH000 Phillips head screwdriver to remove screws.
- Place the two 0.3 mm screws on magnetic mat or plastic bag.

Step 9



- Locate the thin silver plate with a golden plastic ribbon attached. This ribbon holds the lens and the rest of the camera together.
- Find the two 0.3 mm silver Phillips screws on the silver plate. Remove them with a PH000 Phillips head screwdriver. Place the two screws on a magnetic mat or plastic bag.

Step 10



- After removing screws and the golden ribbon, the frontal lens will be completely detached from the camera.
- Replace frontal lens with new one.

To reassemble your device, follow these instructions in reverse order.